

**HOBART**701 S Ridge Avenue, Troy, OH 45374  
1-888-4HOBART • www.hobartcorp.com**HC24EA COUNTER CONVECTION  
STEAMER – PROFESSIONAL CONTROL****HOBART****HC24EA COUNTER CONVECTION STEAMER – PROFESSIONAL CONTROL****STANDARD FEATURES**

- Stainless steel exterior and cooking compartment with coved interior corners.
- Professional Control Package includes:
  - Superheated Steam System
  - Staged Fill
  - Lighted power switch with cook and ready lights
  - Auto drain with Smart Drain System (timed drain) with PowerFlush
  - Timer 60 minute 60 cycle (50 cycle x 1.2) with Constant Steam Setting
  - Cord strain relief
- High output stainless steel steam generator.
- Heavy duty door and door latch mechanisms.
- Leveling feet.
- Shipped for 208/60-50/3 electrical service. Can be field converted to 208/60-50/1 and 240/60-50/3 and 240/60-50/1.
- Split water line connection. 1½" NPT drain connection.
- One year limited parts and labor warranty.

**ACCESSORIES**

- 4" legs.
- 12" x 20" stainless steel pans:
  - 1" deep (solid) (perforated).
  - 2½" deep (solid) (perforated).
  - 4" deep (solid) (perforated).
- Stainless steel pan cover.
- Open leg stand.
  - 28" open leg stand with pan slides 24"w x 28"h.
  - 34" open leg stand with pan slides 24"w x 34"h.
  - Set of two universal pan slides for open leg stand.
  - Stand sliding shelf.
- Stack kit.
- Removable sliding shelf.
- Cord and plug set.
- Casters.
- Water treatment system.

**MODELS**

- HC24EA3 – 3 Pan Capacity
- HC24EA5 – 5 Pan Capacity

Specifications, Details and Dimensions on Inside and Back.



Shown on optional stand with  
extra set of pan slides and pans

# HC24EA COUNTER CONVECTION STEAMER – PROFESSIONAL CONTROL



701 S Ridge Avenue, Troy, OH 45374  
1-888-4HOBART • www.hobartcorp.com

## SERVICE CONNECTIONS

**ELECTRICAL CONNECTIONS:** Field Wire Electrical Connection 1¼" (32 mm) K.O. service entrance.

**DRAIN:** 1½" IPS piped to open drain. No solid connections. 60" length before open air gap opening and not more than two bends or elbows.

**GENERATOR WATER SUPPLY:** ¾" (19 mm) hose bib to generator, flow rate .5 gpm @ minimum 25 to maximum 50 psi. (170-345 kPa).

**CONDENSING WATER SUPPLY:** ¾" (19 mm) hose bib to condenser, flow rate .5 gpm @ minimum 25 to maximum 50 psi. (170-345 kPa).

## WATER QUALITY STATEMENT

The fact that a water supply is potable is no guarantee that it is suitable for steam generation. Your water supply must be within these general guidelines:

<b>SUPPLY PRESSURE</b>	20 - 60 psig
<b>HARDNESS*</b>	less than 3 grains
<b>SILICA</b>	less than 13 ppm
<b>TOTAL CHLORIDE</b>	less than 4.0 ppm
<b>pH RANGE</b>	7-8
<b>UN-DISSOLVED SOLIDS</b>	less than 5 microns
* 17.1 ppm = 1 grain of hardness	

Other factors affecting steam generation are iron content, amount of chloridation and dissolved gases. Water supplies vary from state to state and from locations within a state. Therefore it is necessary that the local water treatment specialist be consulted before the installation of any steam generating equipment.

## ELECTRICAL DATA

Device	Total KW	Volts	Hz	Ph	Kw Per Phase			Rated Amps			
								3 Phase Amps Per Line			Single Phase
					L1-L2	L2-L3	L3-L1	L1	L2	L3	
HC24EA3-3	9.25	208	60	1							43.57
HC24EA3-3	9.25	240	60	1							38.54
HC24EA3-3	9.25	208	60	3	4.25	2.69	2.12	26.54	28.88	20.04	
HC24EA3-3	9.25	240	60	3	2.83	3.58	2.83	20.45	23.15	23.15	
HC24EA3-4	9.25	480	60	3	2.83	3.58	2.83	10.21	11.57	11.57	
HC24EA5-3	15.75	208	60	1							74.82
HC24EA5-3	15.75	240	60	1							65.63
HC24EA5-3	15.75	208	60	3	7.50	4.31	3.75	46.84	49.18	33.57	
HC24EA5-3	15.75	240	60	3	5.00	5.75	5.00	36.08	38.79	38.79	
HC24EA5-4	15.75	480	60	3	5.00	5.75	5.00	18.04	19.40	19.40	

2002 National Electric Code



701 S Ridge Avenue, Troy, OH 45374  
1-888-4HOBART • www.hobartcorp.com

# HC24EA COUNTER CONVECTION STEAMER – PROFESSIONAL CONTROL

**NOTE:**

- Dimensions which locate the above connections have a tolerance of + or -3" (+ or -75 mm).
- Installation of backflow preventers, vacuum breakers and other specific code requirements is the responsibility of the owner and installer. It is the responsibility of the owner and installer to comply with local codes.
- Plastic drains are not recommended due to inherent limited temperatures of the plastic. Boiler purge temperatures may exceed 180°F. The installer may be required to provide means to reduce boiler purge water temperature to be that of the condensate temperature of 140°F or less.
- This appliance is manufactured for commercial installation only and is not intended for home use.

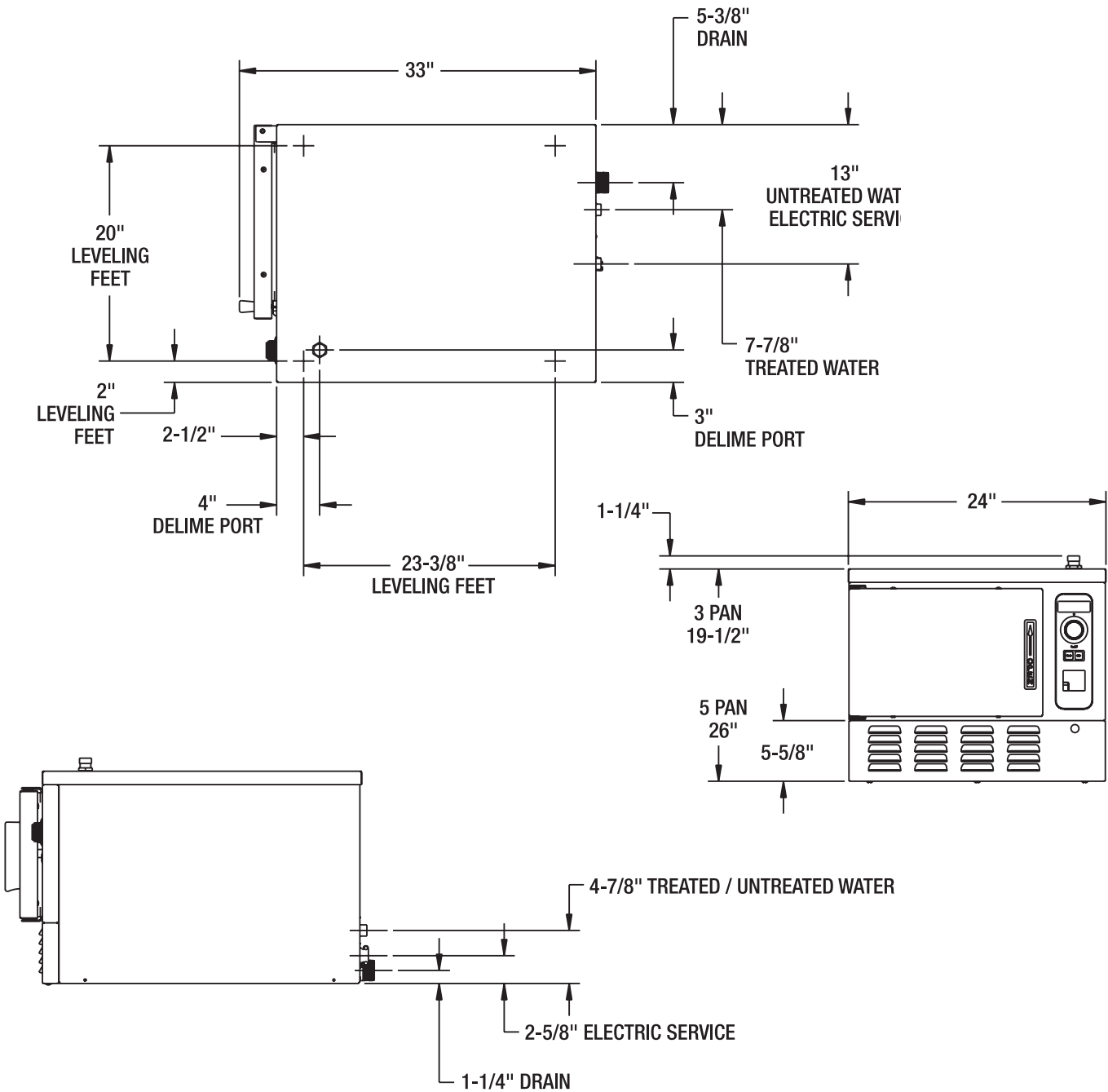
**ELECTRICAL DATA**

Device	Circuit Size Amps	Fuse Size or Circuit Breaker Size * (Amps)	NEMA	Description
HC24EA3-3	60	60		
HC24EA3-3	50	50	NEMA 14-60P	Cord & Plug 50A 125/250V 3 Pole 4 Wire Angle Grounding Receptacle - Nominal 6 ft.
HC24EA3-3	35	35	NEMA 15-60P	Cord & Plug 50A 3ph 250V 3 Pole 4 Wire Angle Grounding Receptacle - Nominal 6 ft.
HC24EA3-3	30	30	NEMA 15-60P	Cord & Plug 50A 3ph 250V 3 Pole 4 Wire Angle Grounding Receptacle - Nominal 6 ft.
HC24EA3-4	15	15		
HC24EA5-3	90	90		
HC24EA5-3	80	80		
HC24EA5-3	60	60	NEMA 15-60P	Cord & Plug 60A 3ph 250V 3 Pole 4 Wire Angle Grounding Receptacle - Nominal 6 ft.
HC24EA5-3	50	50	NEMA 15-60P	Cord & Plug 60A 3ph 250V 3 Pole 4 Wire Angle Grounding Receptacle - Nominal 6 ft.
HC24EA5-4	25	25	NEMA 15-60P	Cord & Plug 60A 3ph 250V 3 Pole 4 Wire Angle Grounding Receptacle - Nominal 6 ft.

# HC24EA COUNTER CONVECTION STEAMER – PROFESSIONAL CONTROL



701 S Ridge Avenue, Troy, OH 45374  
1-888-4HOBART • www.hobartcorp.com



### PROFESSIONAL CONTROL PACKAGE

MODEL	PH	208V		240V		480V	
		KW	AMP	KW	AMP	KW	AMP
HC24EA3	1	9.25	44	9.25	39		
	3	9.25	29	9.25	23	9.25	12
HC24EA5	1	15.75	76	15.75	66		
	3	15.75	44	15.75	38	15.75	19

### PAN CAPACITY

MODEL	1"	2½"	4"	6"
HC24EA3	6	3	2	1
HC24EA5	10	5	3	2

As continued product improvement is a policy of Hobart, specifications are subject to change without notice.