

## Computer Combination Net Weigh Scales Yamato DATAWEIGH® SIGMA F1 - FRONTIER



### A Technological Revolution in the Concept of Multihead Weighing

#### ■ Simplicity of Design and Structure

- Improved combination accuracy and speed with the minimum number of buckets.
- Simultaneous combination capability offers cost effective application interface.

#### ■ New more powerful CPU

- AICC-SE Advanced Interactive Command Console offers 10% higher operational speed and higher accuracy

#### ■ Advanced Software Operations

- AICC-SE Advanced Interactive Command Console offers 10% higher operational speed and higher accuracy
- Advanced Software Operations Multilingual (17 languages) 300 programs sorted by number, name or optional barcode

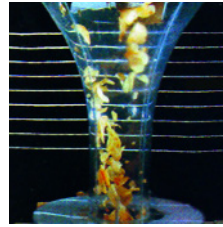


# Barry-Wehmiller

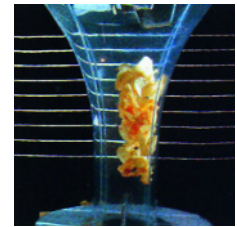
# Computer Combination Net Weigh Scales Yamato DATAWEIGH® SIGMA F 1- FRONTIER

## Bottom Based Handling of Σ F1 Series

- Maximize sealing time
- Minimize sealing failures
- Improve Seal Integrity
- Improve Efficiency



with current system



with new Concept EF1 Series

## Advanced Interactive COLOR Touch Screen

### AICC-SE Advanced Interactive Command Console RCU810-A

- Optional Web Camera
- Optional Bar Code Reader
- Access port for Key board, Ethernet, CompactFlash to memorize production parameters & Scale operation parameters
- Built-in Printer

### COLOR Touch Screen

- Large (10.4") color touch screen offers a clear graphic display
- Color choice enhanced setup procedures minimizes potential errors
- Clear display in the most adverse light conditions
- Quick screen to screen response

### Self-diagnosis

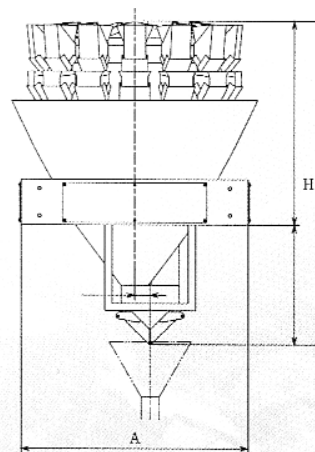
- Optional Web Camera
- Self check to RAM/ROM communications, monitoring of voltage to actuator unit, zero point and load cell
- Event logs

### Advanced Software Options

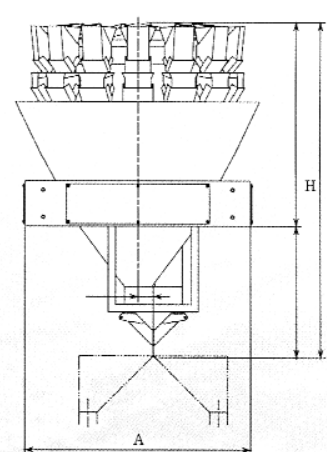
- Multilingual (17 languages)
- 300 programs sorted by number, name or optional barcode
- Auto Programming tool
- Fully programmable operational parameters

## OUTSIDE DIMENSIONS

SINGLE



TWIN



Model	Weigh Heads	Weight (g)	Volume per Pack (ml)	Speed (p/m)	Max # of discharge points	Dimensions	
						A(mm)	H(mm)
F314SV	14	500	1,000	160	2	800	1,000
F318SV	18	500	1,000	240	2	1,100	1,100
F320SV	20	500	1,000	240	3	1,100	1,200
F514SV	14	1,000	3,000	140	2	1,250	1,660
F518SV	18	1,000	3,000	210	2	1,500	1,860

## HayssenSandiacre

IIUSA - 225 Spartangreen Boulevard • Duncan, SC 29334 USA • 864/486-4000

UNITED KINGDOM - 16 Roman Way • Thetford, Norfolk IP24 1XB United Kingdom • + 44 (0) 1842 754171

UNITED KINGDOM - 101 Lilac Grove • Beeston, Nottingham, NG9 1PF • United Kingdom • +44 (0) 115 967 8

MEXICO - Castorena 324-118 • Cuajimalpa • 05000 México, D.F • +(52-55)5813-7770

www.hayssensandiacre.com • sales@hayssensandiacre.com