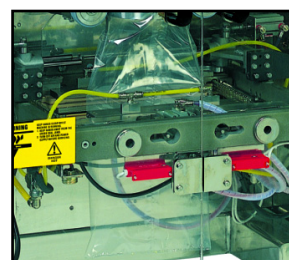
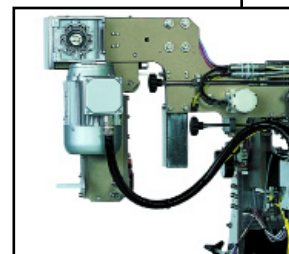


Transverse Zip Applicator



Features:

- Sandiacre's Transverse Zip Applicator, which has been designed to operate with Sandiacre's intermittent motion range of machines*, applies a metered length of zip tape horizontally across the film prior to the film taking on the form of a bag (*servo-driven transport required).

Bag Types, Features and Considerations:

- Pillow packs and block bottom bags are accommodated.
- Zip tape corner welds aid bag re-closing. Bag opening is reduced when using this feature, particularly on block bottom packs.
- Bag perforation above the zip tape aids initial opening of the bag. However, having perforations means that the bag is, effectively, open to atmosphere. If full sealing is essential, perforations can be omitted and the cut-to-open option would be used.

- Final bag length is increased to accommodate the zip tape. This means a 40mm increase on polyethylene bags and a 25mm increase on laminate bags (refer to the diagrams overleaf).
- Zip tape centre line is 40mm below the bag top/cut on polyethylene bags and 43.55mm below the bag top/cut on laminate bags (refer to the diagrams overleaf).

Barry-Wehmiller

Transverse Zip Applicator

Film Types

- Laminates of polyethylene, e.g. OPP/Poly, PET/Poly, Nylon/Poly.
- Straight Polyethylene.
- Co-extruded Polyethylene.

Film and zip material must be compatible for optimum performance - trials advisable. Polyethylene film must be PEC marked. Laminate materials perform better with PEC marks, but are accommodated without.

Zip Types

ITW Zip-Pak 25mm recommended. All performance statements relate to this zip type.

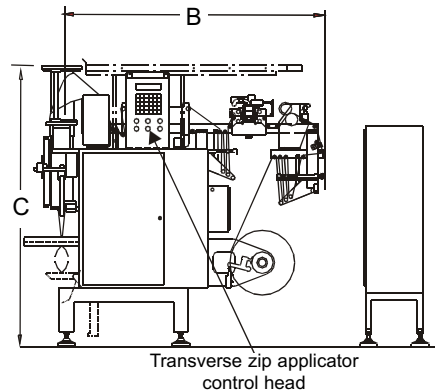
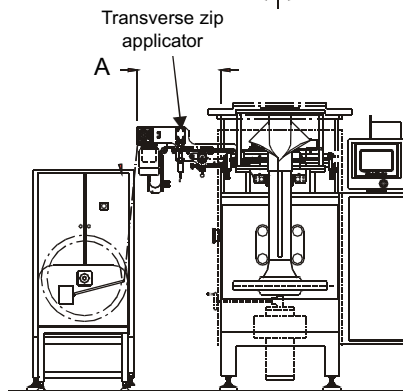
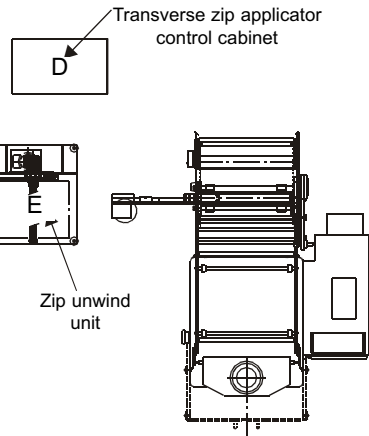
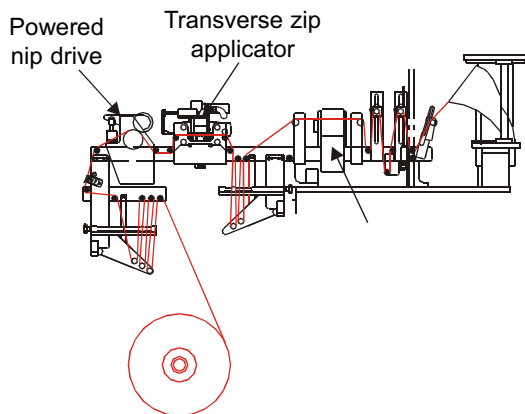
Film and zip material must be compatible for optimum performance - trials advisable.

Machine Considerations

Sandiacre's Transverse Zip Applicator can be fitted to the following Sandiacre machines without significant modification:

- TG250, TG320 and TG400 - intermittent motion (LD) machines with servo transport as standard.
- TG250, TG320 and TG400 - intermittent motion (L) machines fitted with the optional servo transport. The optional servo transport may be retrofitted to other Sandiacre machines, but there are also other considerations.

Please contact the Sandiacre sales office for further information.

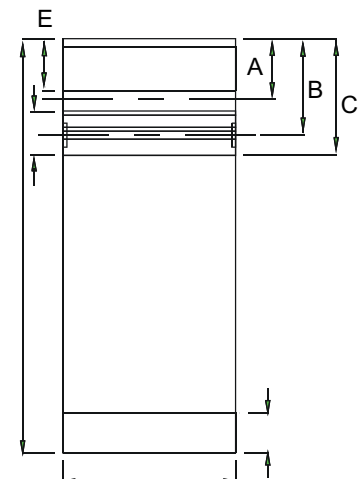
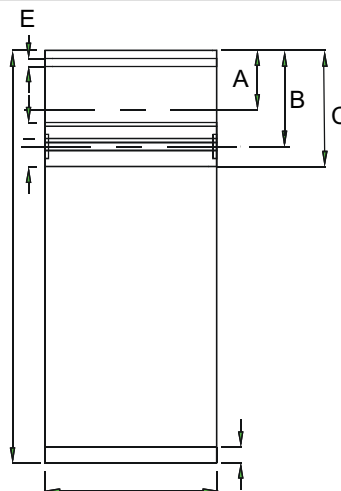


| Dim | Machine Dimensions |
|-----|-------------------------------------|
| A | 585 (23.03) approximately |
| B | 1820 (71.65) approximately |
| C | 1950 (76.77) approximately |
| D | 700 x 400 (27.5 x 15.70) footprint |
| E | 740 x 640 (29.10 x 25.30) footprint |

Dimensions in mm with equivalent inches in brackets (for guidance only).

| Dim | Pack Dimensions | Heatseal (Laminates) | Impulse (Polyethylene) |
|-----|--------------------------------------|----------------------|------------------------|
| A | Perforation - distance from bag top. | 27 (1.06) | 23 (0.90) |
| B | Centre line of zip material. | 43.50 (1.71) | 40 (1.57) |
| C | Bag top to bottom of zip material. | 56 (2.20) | 52.50 (2.06) |
| D | Bag bottom seal weld. | 22 (0.87) | 3 (0.12) |
| E | Bag top seal weld. | 22 (0.87) | 3 (0.12) |
| F | Zip material width. | 25 (0.98) | 25 (0.98) |

Dimensions in mm with equivalent inches in brackets (for guidance only).



HayssenSandiacre

USA - 225 Spartangreen Boulevard • Duncan, SC 29334 USA • 864/486-4000

UNITED KINGDOM - 16 Roman Way • Thetford, Norfolk IP24 1XB United Kingdom • +44 (0) 1842 754171

UNITED KINGDOM - 101 Lilac Grove • Beeston, Nottingham, NG9 1PF • United Kingdom • +44 (0) 115 967 8787

MEXICO - Castorena 324-118 • Cuajimalpa • 05000 México, D.F. • +(52-55)5813-7770

www.hayssensandiacre.com • sales@hayssensandiacre.com