

ROSE FORGROVE Flow Wrapper for Wet Wipe Industry Integra



Proven, Dependable Performance

Rose Forgrove manufactures a unique, versatile flow-wrapping machine for the wet wipe industry. The Integra wet wipe machine produces a wide array of package styles and configurations that delivers distinctive appearance and exceptional functionality. It's simple and intuitive design utilizes the latest in Allen Bradley controls while the machine's rugged stainless steel construction withstands the most stringent sanitation requirements.

Wet Wipe Wrapping Solutions

- High Integrity Sealing via Long Dwell Servo XY Motion Jaw
 - Constant jaw dwell independent of throughput speed
- Numerous Package Configurations
 - Die-cut and label, zipper, gusseted, pillow, etc
- Full Stainless Steel Wash-down Design
 - Solid, robust design for ease of maintenance and sanitation requirements
- Allen Bradley ControlLogix Platform with PV1000 Color Interface
 - Icon based set-up features along with 100 count recipe storage



- Efficient machine features that enhance production yields
 - Misplaced Product at Jaw System (eliminating jaw jams)
 - Twin reel film mounting with auto-splice
- Both contact and non-contact feeder systems available in full stainless steel wash-down construction
- U.S. based parts and service with free HayssenSandiacre Tele-service (8am-8pm: M-F)

The Rose Forgrove Integra: Extraordinary performance and a tremendous value for your packaging application.

Barry-Wehmiller

ROSE FORGROVE Flow Wrapper for Wet Wipe Industry Integra

Standard Features

- Robust, solid design (5,500lbs) provides years of dependable service.
- 2M (78.75in) infeed with multi-pitch chain.
- 'Dial-in' dwell time facility for constant cross seal parameters regardless of speed changes.
- Multi-axis servo drives for outstanding versatility.
- Driven wrapper pre-feed.
- On-screen statistics and diagnostics help speed and simplify the flow wrapping process.
- Electronic crimp height adjustment.
- Remote diagnostics via modem.
- One set of heated long seam rollers and a heated cleft.

Optional Features

- Range of fully-and semi-automatic feeders.
- Left or right hand machine configuration.
- Stainless steel washdown construction (wrapper, infeed)
- Gas flushing (MAP). Gas analyzer & mixer.
- Film auto-splice with twin reel mounting.
- Coding units (various) and label applicators.
- Infeed extensions.
- Two sets of heated long seam rollers.
- Operator adjustable folding box.
- Water cooled long seal deadplates (mains or chiller cooling system).
- Mechanical gusseting - only available on 270mm (10.62in) wide crimp jaws.
- Discharge pack reject station.

Technical Data

All information given below is dependent upon final machine specification, feed arrangement, product type, options selected and film specification.

Power Requirements:

400V, 3-phase 50/60 cycles
 Up to 40 amps/phase.

Package Range:

Minimum Width: 0.80" (20mm)
 Length: 0.40" (10mm)
 Height: 0.25" (6mm)

Production Rate

Up to 150 wraps/minute -depending on product and wrapper

Air Requirements

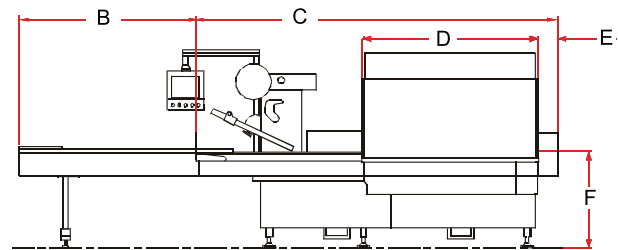
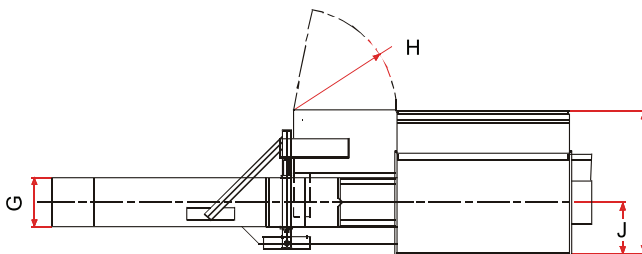
5.6 bar (80lbs/sqin) (minimum).

Maximum

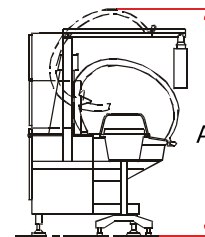
Width: 17.7" (450mm)
 Length: 21.25" (540mm)
 Height: 5.90" (150mm)

Air Consumption

Minimal but dependent upon options selected.



Dim	
A	1580 (62.20)
B	To suit application
C	3376 (132.91)
D	1640 (64.56)
E	188 (7.40)
F	900 (35.43)
G	450 (17.71)
H	952 (37.48)
I	1394 (54.88)
J	539 (21.22)
Dimensions in mm with equivalent inches in brackets	



HayssenSandiacre

USA - 225 Spartangreen Boulevard • Duncan, SC 29334 USA • 864/486-4000

UNITED KINGDOM - 16 Roman Way • Thetford, Norfolk IP24 1XB United Kingdom • + 44 (0) 1842 754171

UNITED KINGDOM - 101 Lilac Grove • Beeston, Nottingham, NG9 1PF • United Kingdom • +44 (0) 115 967 8787

MEXICO - Castorena 324-118 • Cuajimalpa • 05000 México, D.F • +(52-55)5813-7770

www.hayssensandiacre.com • sales@hayssensandiacre.com