

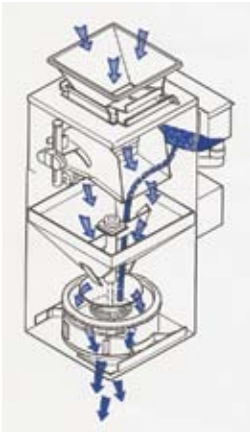
SS-TREATER HEAD



SS-6 Mist-O-Matic® Seed Treater Head

Gustafson

Advanced
Seed Treatment
Technology



The Treating Process

Each time the weighpan trips, seed flows into a retarding hopper, which distributes seed uniformly over the dispensing cone. At the same time, treatment is delivered to the chemical cup receptacle and flows to the revolving discs, which atomizes treatment onto the seed.

Seed and treatment mix while they are conveyed through the misting chamber and then discharged into the mixing chamber for final blending and mixing.

Features & Benefits

The SS-6 Treater Head

Designed to be used in conjunction with mixing chambers.

Superior Chemical-to-seed coverage

On wrinkled and dented seeds such as corn or peas. The SS-6 System is also recommended for cereal grains.

Limited worker exposure.

The closed system protects operators from harmful chemicals or dust.

Mist-O-Matic® Atomizer

Applies chemical efficiently on "free flowing" seeds.

Atomizer Motor

230V, 3ph, 60Hz TEFC.

Access Door

For easier maintenance, adjustment and cleaning.

Stainless Steel Treating Head

Equipped with manual slide gate, electric diaphragm pump, drive motor. Metering Tank and Chemical Cups sold separate.

Capacities

For Barley & Wheat:

With 6' x 10" mixing chamber - Capacity: 250-450 bu/hr (6.8-12.3 M.T./hr)

For Corn:

With 8' or 10' x 36" polishing drum - Capacity: 185-400 bu/hr (4.7-10.2 M.T./hr)

With 6' x 10" mixing chamber - Capacity: 185-400 bu/hr (4.7-10.2 M.T./hr)

For Cotton:

With 6' or 8' x 10" mixing chamber - Capacity: 3-7 bu/hr (2.7-6.4 M.T./hr)

For Soybeans:

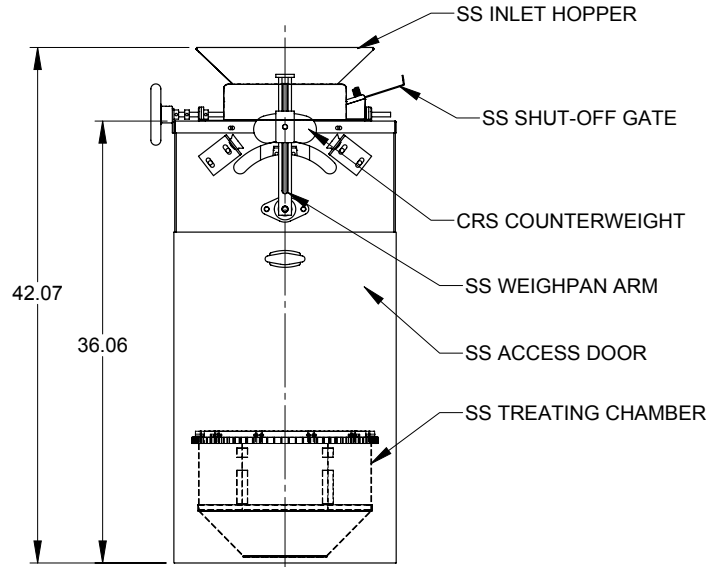
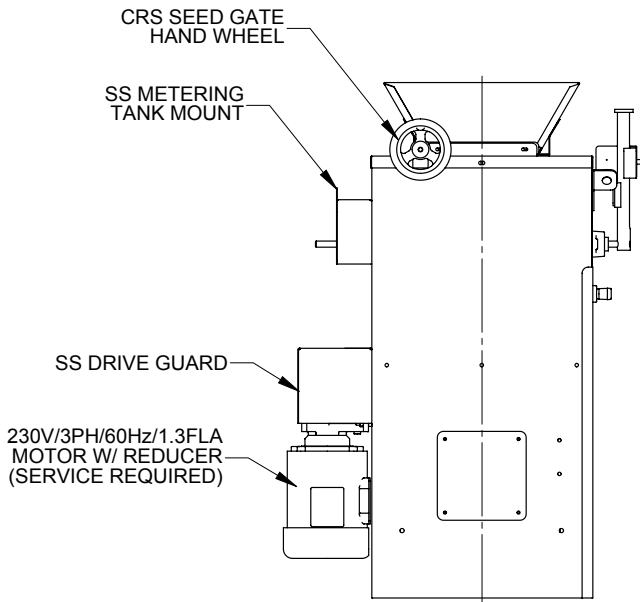
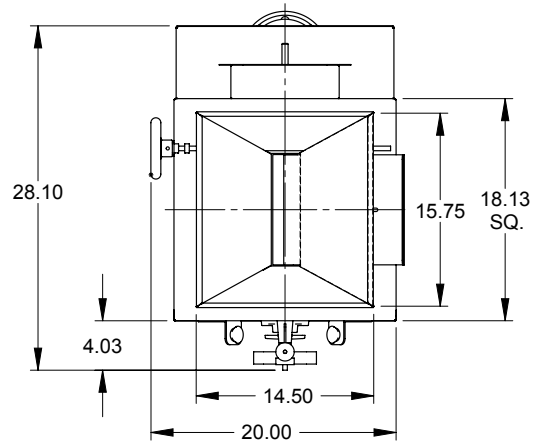
With 6' x 36" polishing drum - Capacity: 200-400 bu/hr (5.4-10.9 M.T./hr)

For Sugar Beets & Vegetables:

Up to 400 bu/hr



CONSTRUCTION: SS, CRS
DIM. TOL. \pm .38



The SS-6 Treater Head

Technical information expressed in this document is for reference purposes only, subject to change without notice. If certified dimensional drawings are required, call 1.800.634.6738.



Bayer CropScience

Bayer CropScience
4895 12th Avenue East
Shakopee, Minnesota, 55379
USA

www.bayercropscienceus.com



Packaging - Processing
Bid on Equipment
1-847-683-7720
www.bid-on-equipment.com