

Water Cooled Remote Refrigeration Package

WJ100-REF-W [For 100 Gal. WaterJet]

General Description:

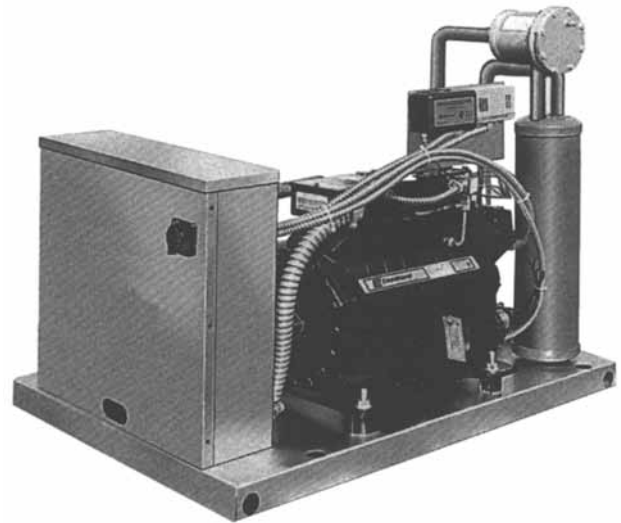
Remote Refrigeration Package shall be a Model WJ100-REF-W self-contained water cooled condensing unit consisting of a compressor, shell and tube condenser, and electrical control and safety subsystems. Unit shall be designed and sized to provide adequate water chilling capacity for the WaterJet Chiller, and will come evacuated and nitrogen charged for use with R-22 refrigerant. Unit shall be designed for interior, utility room installation.

Standard Features:

- Semi-hermetic compressor
- Sealed high efficiency compressor for indoor use only
- Compressor and condenser coils evacuated and nitrogen charged. For use with R-22 refrigerant only
- Water cooled condensing unit and matching evaporator
- Welded Pump-Down Receiver Tank with pressure relief valve
- Suction accumulator with factory installed refrigerant filter/dryer with replaceable core
- Compressor Receiver Valves factory mounted
- Compressor and control cabinet fully enclosed with corrosion resistant galvanized panels

Control Package:

- Main Power Disconnect
- Head pressure control for all climate ambient temperature operation
- Fuse/panel protection system
- Both Receiver Outlet & Liquid Outlet sight glasses
- High/Low pressure control
- Flood type head pressure control



Additional WaterJet Capabilities:

For Air Cooled Package see CapKold spec. CK-83

Notes:

- WaterJet Remote Refrigeration Package is designed for indoor installation and for use with customer-supplied cooling water. Contact CapKold for any refrigeration piping run over 100 feet or installation at any elevation higher than 10 feet above the WJ100 unit. Professional consultant and/or mechanical contractor must determine suitability of installation site and provide for all necessary site preparations.
- Refrigerant piping and electrical control wiring between the WaterJet Tank unit and water cooled Refrigeration Package must be installed by a licensed refrigeration contractor, in accordance with all applicable building, plumbing and electrical codes, good practice and the detailed installation instructions provided with both system components.

WATER COOLED CONDENSING UNIT 100 GALLON WATERJET

UTILITY REQUIREMENTS		
REF. CODE	DESCRIPTION	CONNECTION
RL	LIQUID LINE	7/8" OD TUBE
RG	SUCTION LINE	1-5/8" OD TUBE
CWI	COOLING WATER IN	2" NPT
CWO	COOLING WATER OUT	2" NPT
SVE	SAFETY VALVE EXHAUST	PIPE AS REQUIRED
EP	POWER IN	208-230/3/60 RLA - 60 AMPS MFS - 125 AMPS
		480/3/60 RLA - 29 AMPS MFS - 60 AMPS
APPROX. WEIGHT		760 LBS EMPTY
REFRIGERANT		R22
CHARGE REQUIRED		DO NOT EXCEED 100 FEET OF REFRIGERATION LINE LENGTH, IF A GREATER LENGTH IS REQUIRED CONTACT GROEN.
SEE NOTE #2		
COOLING WATER		50 GPM @85°F RETURN TEMP WITH ΔOF 10°F

NOTES:

1. PRIOR TO INSTALLATION OF THIS EQUIPMENT, CAPKOLD SERVICE DEPARTMENT MUST AUTHORIZE THE USE OF RSES CERTIFIED REFRIGERATION TECHNICIANS.

2. REFRIGERATION CHARGE IS TEMPERATURE AND PIPING LENGTH DEPENDENT. APPROXIMATE 66 TO 100 POUNDS.

3. GENERAL STRUCTURAL LOCATION SHOWN. SPECIFIC STRUCTURAL LOCATIONS AND FASTENING MEANS TO BE DETERMINED AT INSTALLATION.

4. GENERAL UTILITY CONNECTION LOCATIONS SHOWN. ACTUAL LOCATION AND DIMENSIONS DETERMINED BY SITE SPECIFICS.

5. KNOCKOUT LOCATIONS FOR ELECTRICAL POWER ARE LOCATED IN VARIOUS POSITIONS ON REAR OF PANEL.

6. SPECIFIED DIMENSION ARE MINIMUM FOR WORKING CLEARANCE ONLY. AIR FLOW REQUIRES AT LEAST TWO SIDES OPEN (NO WALLS).

COMPLIANCE WITH ALL STATE AND LOCAL CODES IS THE RESPONSIBILITY OF THE INSTALLER.

7. FOR INDOOR USE ONLY.

8. ALL DIMENSIONS ±2.00".

9. DUE TO CONTINUAL PRODUCT IMPROVEMENT, ALL DESIGNS, SPECIFICATIONS AND DIMENSIONS SUBJECT TO CHANGE WITHOUT NOTICE.

