

Batch Tumble Chiller

CKTC [320 Gal.]



General Description:

CapKold Model CKTC 320 batch front loading rotating drum ice water bath tumble chiller is designed to rapidly chill food packaged in flexible plastic casings from 180°F to 40°F in approximately 60 minutes or less after introduction of the last casing (depending on product and packaging). Unit features a compact design with integrated, pre-piped chilled water heat exchanger and all stainless construction for long life, easy cleaning and low profile unit height. Tumble Chiller to include the following standard and optional features:

Standard Features:

- Stainless steel construction throughout
- Perforated stainless steel drum with a 1HP direct drive motor
- Maintenance free shaft seal
- Drum sized to hold and chill up to 320 gallons of bagged product
- Inclined loading chute allows continuous loading of product while drum is in motion
- Pre-piped circulating water pump with inline filter
- Automatic water fill and drain, with selectable water levels (Saves water when chilling smaller batch)
- Hot water or steam connection for drum cleaning or batch product heating (Clean steam must be supplied)
- Temperature control thermostat
- Pre-piped for single point utility connections
- Manufactured to latest sanitary standards and HACCP compliant
- All operating controls are contained in a convenient eye level, front mounted control panel (Left front side or Right front side mounting available)

Integral Control Package:

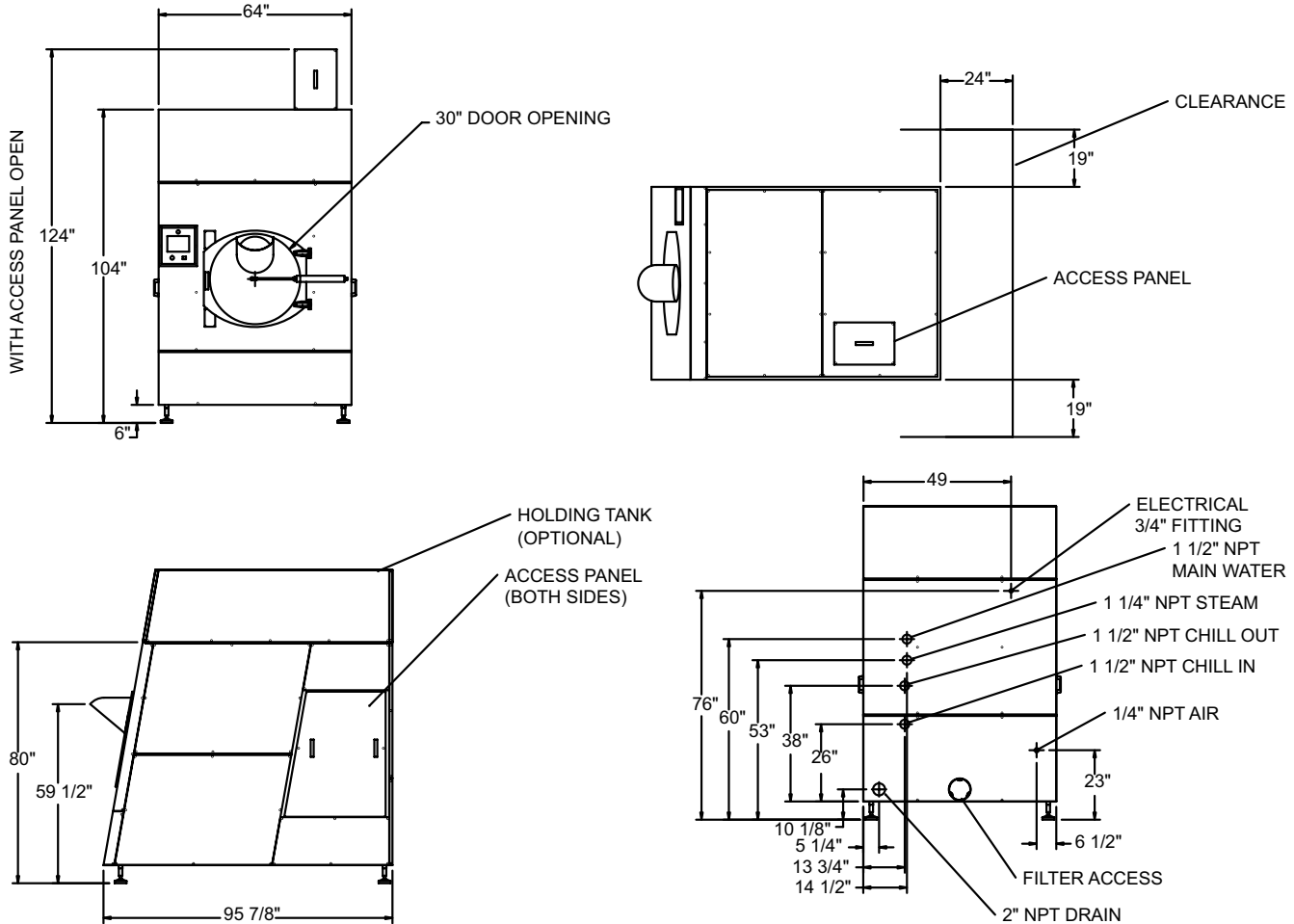
- Left or Right side mounting door hinge (specify order)
- All operating controls are contained in a convenient eye level, side mounted touch screen control panel. Control package includes:
- Integral cycle programming up to 99 programs
 - Stop switch
 - Start switch



- Door over-ride switch which operates drain and door automatically
- Auto back flush of heat exchanger
- Direct drive drum
- Jog function
- Interrupt function for all cycles
- Drum speed controls to include ability to change speeds from 2, 4, 6, and 8 RPM
- 3 Mode select rotation, oscillation, and gentle cycle
- Emergency stop switch
- Water level switch - 100/200/320 gallons product volume
- Digital temperature readout
- 99 minute timer
- Clean (steam/hot water) mode
- NSF Approved

Options & Accessories:

- Time/temperature chart recorder
- Chlorine injector (For automatic sanitizing of chilling water)
- Hot water cleaning
- Loading conveyor (See CKCV)
- Recycling tank (For recycling cooling water)
- Prison package (per American Correctional Food Service Association Guidelines)



No.	DESCRIPTION	SIZE	REQUIREMENTS
1.	COOLING MEDIUM IN	1 1/2" NPT	60 GPM @ 32 TO 33.8 DEGREES F.
2.	COOLING MEDIUM OUT	1 1/2" NPT	
3.	MAIN WATER IN	1 1/2" NPT	30 GPM @ 43 PSI (INITIAL FILL ONLY)
4.	DRAIN	2" NPT	60 GPM FLOW.
5.	COMPRESSED AIR	5/16" O.D. TUBE	REGULATED 90 MIN-100 MAX PSI, <1 SCFM.
6.	ELECTRIC IN	3/4" FITTING	AS CUSTOMERS SUPPLY @ 10 AMPS MIN @ 20 AMPS MAX IF INCLUDES PFS AND CONVEYOR
THE FOLLOWING ARE OPTIONAL SERVICES FOR CLEANING, ACCORDING TO INDIVIDUAL SPECIFICATION.			
7.	STEAM IN	1 1/4" NPT	300 LBS @ 45 PSI
8.	HOT WATER IN	1" NPT	AS CUSTOMERS SUPPLY