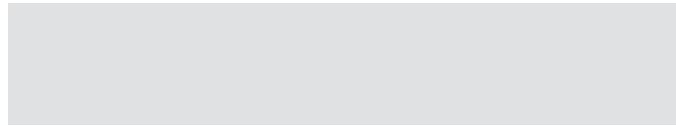


Basket Hoist System

- CKH-1 [1 Ton, Manual Trolley]
- CKH-1E [1 Ton, Motorized Trolley]
- CKR-2E [2 Ton, Motorized Trolley]



Sizing Ordering Guide:

Basket Hoist Systems are recommended to speed and simplify the loading and unloading of Cook Tank Baskets and/or Pasta Kettle Baskets. Depending on the production equipment specified, building layout, building construction and space constraints, individual Hoist and Rail Systems can be specified for: 1) one or more Cook Tanks; 2) one or more Pasta Kettles and/or INA/2-TO [Tilt-Out] Kettles; or 3) a single Hoist and Rail System can serve both a Cook Tank and one or more Pasta Kettles. A Manual Trolley requires one or more operators to push or pull the empty or loaded basket and hoist along the rail. A motorized trolley moves the basket and hoist along the stainless steel rail under its own power. The following hoist models are recommended for:

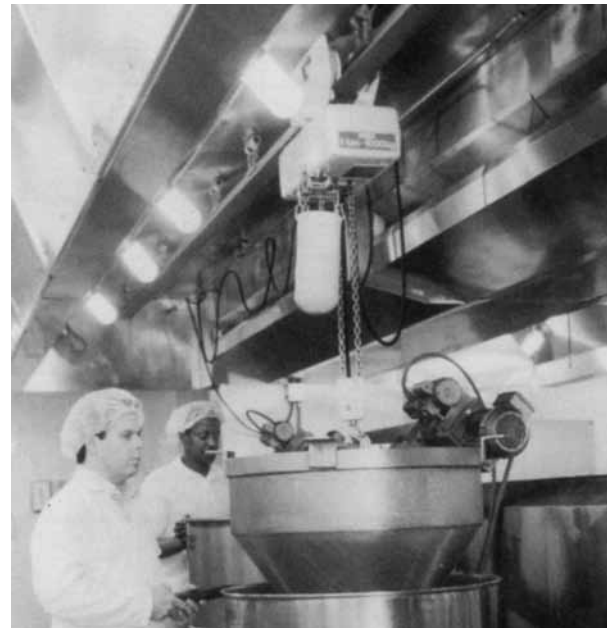
Model	Capacity	Trolley	Cook Tank	Pasta Kettle/Size
CKH-1	1 Ton	Manual	CKCT-5/10	N-80, 100 or 200P
CKH-1E	1 Ton	Motorized	CKCT-10	N-100 or 200P
CKR-2E	2 Ton	Motorized	CKCT-20	All Kettle Sizes

General Description:

Basket Hoist is a CapKold Model CK____[Add H-1 for 1 ton manual, H-1E for 1 ton motorized or R-2E for 2 ton motorized] chain hoist for lifting and movement of Cook Tank baskets and/or Pasta Kettle baskets.

Standard Features:

- Overhead four wheel trolley with water-resistant construction
- Heavy duty motor:
 - H-1 = 1/2 horsepower
 - H-1E = 3/4 horsepower
 - R-2E = 1 1/2 horsepower
- Heavy duty industrial cable suspended push button operating control
- Chain with 1" gap hook and chain container which holds all unused hoist chain just below the trolley



Options:

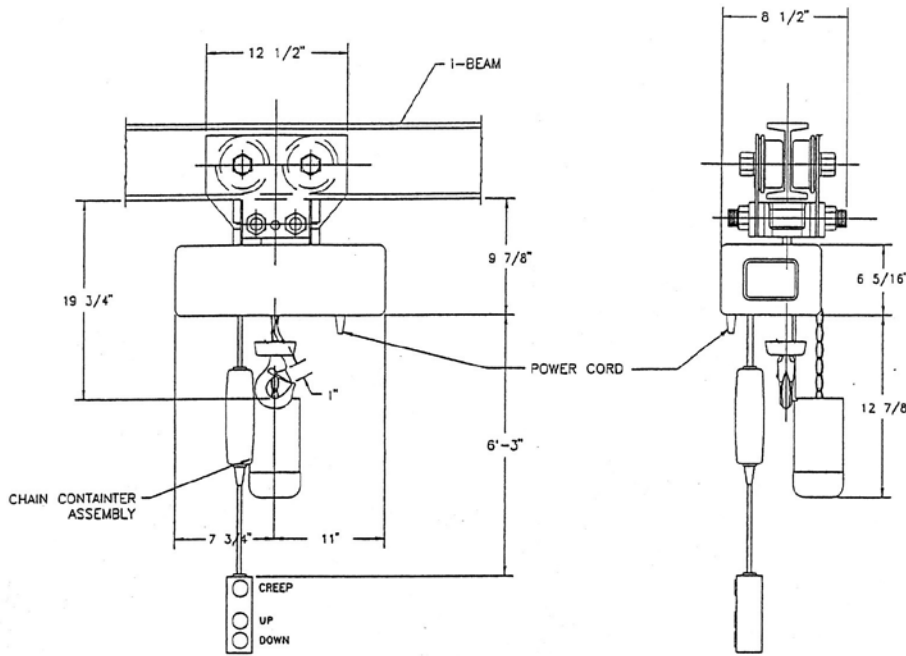
- Messenger cable assembly to support electric power cable.
- Automatic power cord reel [motorized trolley only]

Notes:

- Required rail components, rail heights, hood and ceiling clearances are site dependent and will be listed on the quotation and stack up drawings.

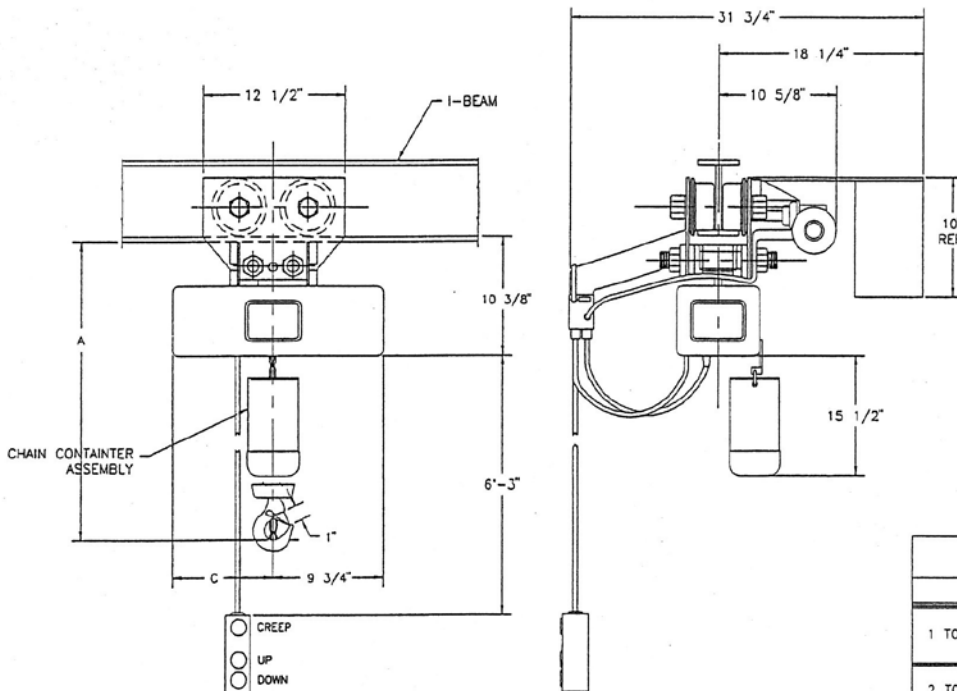
Model CKH-1 Hoist - Manual Trolley

160660 REV A



UTILITY REQUIREMENTS	
EP =	POWER SUPPLY
	1/2 HP
	115/230/1/60 SINGLE SPEED
	OR 208 OR 230/460/3/60
	(CUSTOMER TO SPECIFY REQUIREMENTS)

Models CKH-1E CKR-2E Hoist - Motorized Trolley



UTILITY CONNECTION	
EP =	POWER SUPPLY
1 TON	3/4 HP
2 TON	1 1/2 HP
	115/230/1/60 SINGLE SPEED
	OR 208 OR 230/460/3/60
	(CUSTOMER TO SPECIFY REQUIREMENTS)

TABLE OF DIMENSIONS				
		A	B	C
1 TON	INCH	19 3/4	8 7/8	7/8
2 TON	INCH	23 3/4	10 11/16	1 1/2