

708 series

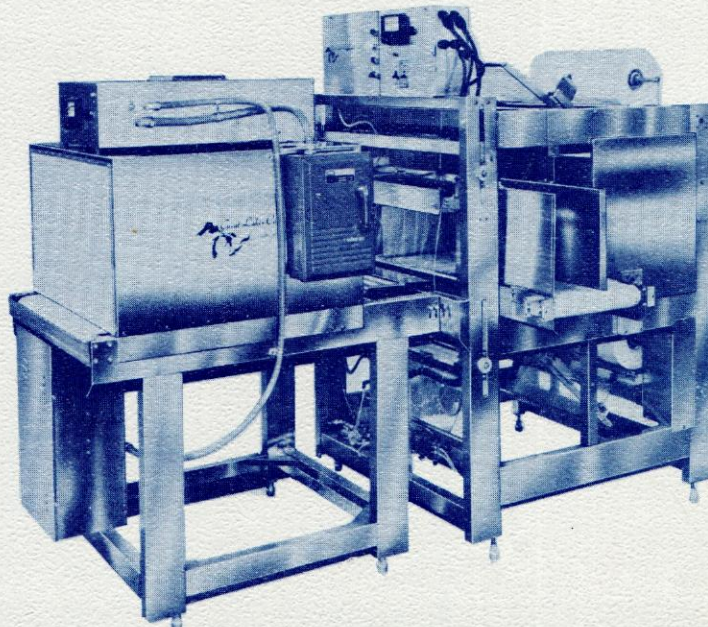
As the originators of shrink-wrap packaging, GREAT LAKES has dedicated years, bringing the packaging industry problems to our drawing boards and creating profitable solutions for you.

Through this effort, the 708 Series BAND-O-MATIC was developed, offering dependable service and the highest quality packaging available to the industry. Time and time again the 708 BAND-O-MATIC has proven to be an extremely versatile shrink-wrap system.

Constructed of formed steel, the 708 BAND-O-MATIC comes equipped with air logic controls, a high velocity heat shrink tunnel with adjustable speed conveyor, and of course GREAT LAKE'S exclusive "Welded Seam" sealing system. This, combined with the many accessories available, enables us to design the 708 BAND-O-MATIC to meet your special needs.

BAND-O-MATIC™

fully automatic
compact
air operated



Shown with standard 708TC shrink tunnel

GREAT LAKES offers these quality standard features

- **POWERED DEMAND TYPE FILM FEED** — Automatically adjusts for varying depths and heights of intermixed size bundles. No machine adjustments necessary.
- **FULLY AUTOMATIC** — Pneumatic powered - No cams or timing gears. Reduces downtime and maintenance costs caused by progressive wear of moving parts.
- **TURBULENT AIR SHRINK TUNNEL** — With adjustable speed conveyor-captive air recirculating system. Solid insulation material in tunnel for maximum efficiency and minimum heat loss. Exterior surfaces not hot to the touch.
- **DUAL SAFETY SYSTEM** — Machine automatically reverts to neutral position in the event of a package jam or open cartons. Eliminates crushed cartons and seal jaw damage.
- **EXCLUSIVE GREAT LAKES WELDED SEAM** — Proven sealing principle insures constant seals stronger than the film itself. No open seams.
- **SELF CLEANING FILM CUT-OFF** — Hot wire burns through film cleanly.



Packaging - Processing
Bid on Equipment

1-847-683-7720

www.bid-on-equipment.com

THE 708 SERIES BAND-O-MATICS

AIR LOGIC SYSTEM

The pneumatic air logic control system is a combination of common three-way and four-way miniature air valves. Their function and operation is easily understood, even more so than comparable electrical systems. The air control system operates at regular plant air pressure of 40-50 P.S.I. This modular system eliminates frequent replacement

of less durable electrical components, resulting in reduced maintenance costs. "Safeness" of a pneumatic air system is an added feature. There are no spark or electrical shock hazards when installed in damp or moist conditions. The only electrical components are the film cut-off wire, sealing system, tunnel heating elements, drive and blower motors.

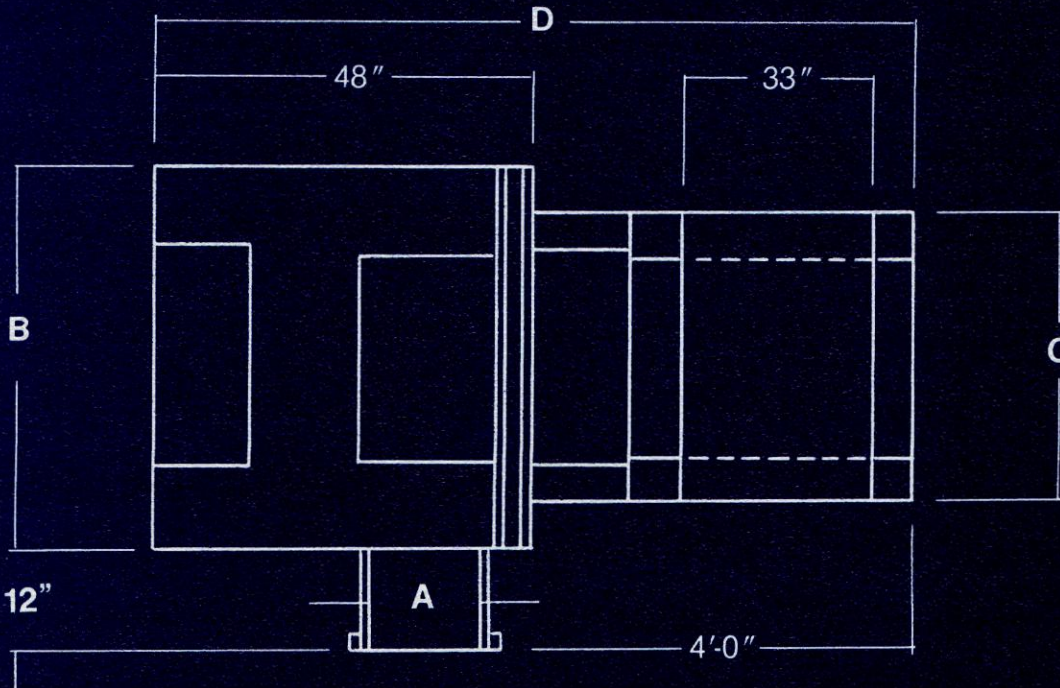
PACKAGE ACCOMMODATIONS

708-27 Maximum Film Width 27" - Maximum Seal Jaw Opening 12" - Maximum Package Depth 7" with Short Discharge - Maximum Package Depth 13" with Long Discharge.

708-37 Maximum Film Width 37" - Maximum Seal Jaw Opening 15" - Maximum Package Depth 20".

SPECIFICATIONS

Model	Max. Film Width	Seal Jaw Opening	Machine Dimensions				Electrical Req.	Air Req.	Approx. Ship. Wt.
			A	B	C	D			
708-27 Stainless Steel/ Non-Corrosive Mat.	27"	12"	14"	43"	35"	8' w/Short Dischg. BAA1133 9' w/Long Dischg. BAA1132	120 VAC 13 AMP.	40-50 PSI	2000 lb.
708-37 Baked Enamel Finish	37"	15"	24"	53"	48"	14'-3"	120 VAC 13 AMP.	40-50 PSI	2200 lb.



OPTIONS

- fixed speed powered infeed (53 ft. per min.)
- product hold down
- skip seal counter
- seal jaw flipper bridge
- infeed indexing clutch
- cooling unit



Great Lakes Corporation

2500 IRVING PARK ROAD
CHICAGO, ILLINOIS 60618
312/478-3625
TWX 910/221-5269

authorized distributor:

Packaging - Processing
Bid on Equipment

1-847-683-7720

www.bid-on-equipment.com