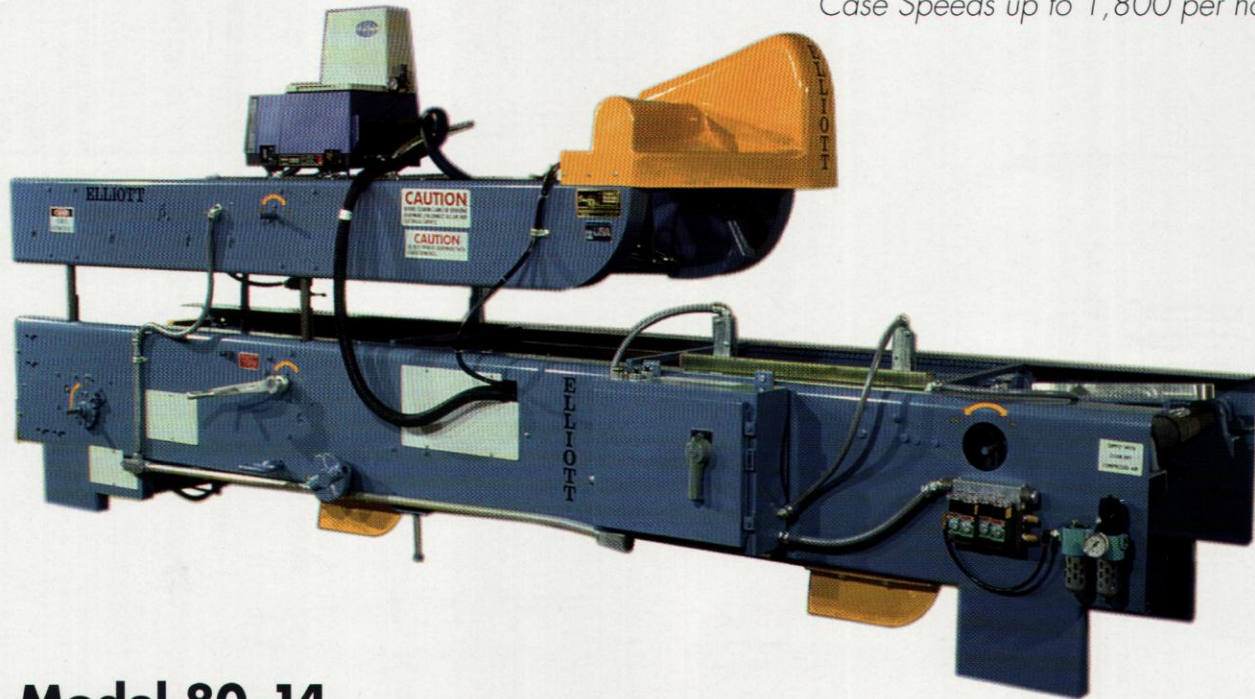


# ELLIOTT AUTOMATIC CASE SEALER

The Elliott Automatic High Speed Top & Bottom Hot Melt Case Sealer is a compact machine for gluing and sealing a wide range of case sizes in a limited space. It is quickly adjustable for changing case sizes. The taping machine is built within a single unitized machine frame. Squared cases are assured by case transfer system.

## Automatic Case Sealer Top & Bottom Hot Melt

*Case Speeds up to 1,800 per hour*



**Model 80-14**

### ■ Comes complete with:

- Adjustable Safety Clutch
- Right-Hand Quick Change Crank Adjustments
- 460/230 volt, 3 phase, 60 hz
- Engraved Legend Plates for Switch Circuitry
- NEMA 12 Electrical
- Safety Guards
- Motors, Drives, Electrical and Pneumatic Controls
- Identification & Function Plates

### ■ Machine Dimensions:

- 14' Long
- 38" Wide
- 24" Infeed Height

### ■ Case Range:

- Length 8" to 23"
- Width 6" to 16"
- Height 3" to 16"

*Elliott*

**MANUFACTURING  
COMPANY, INC.**

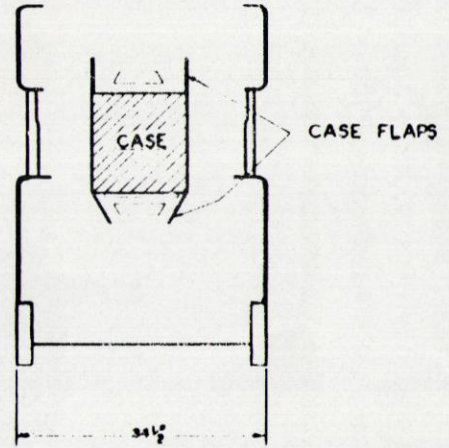
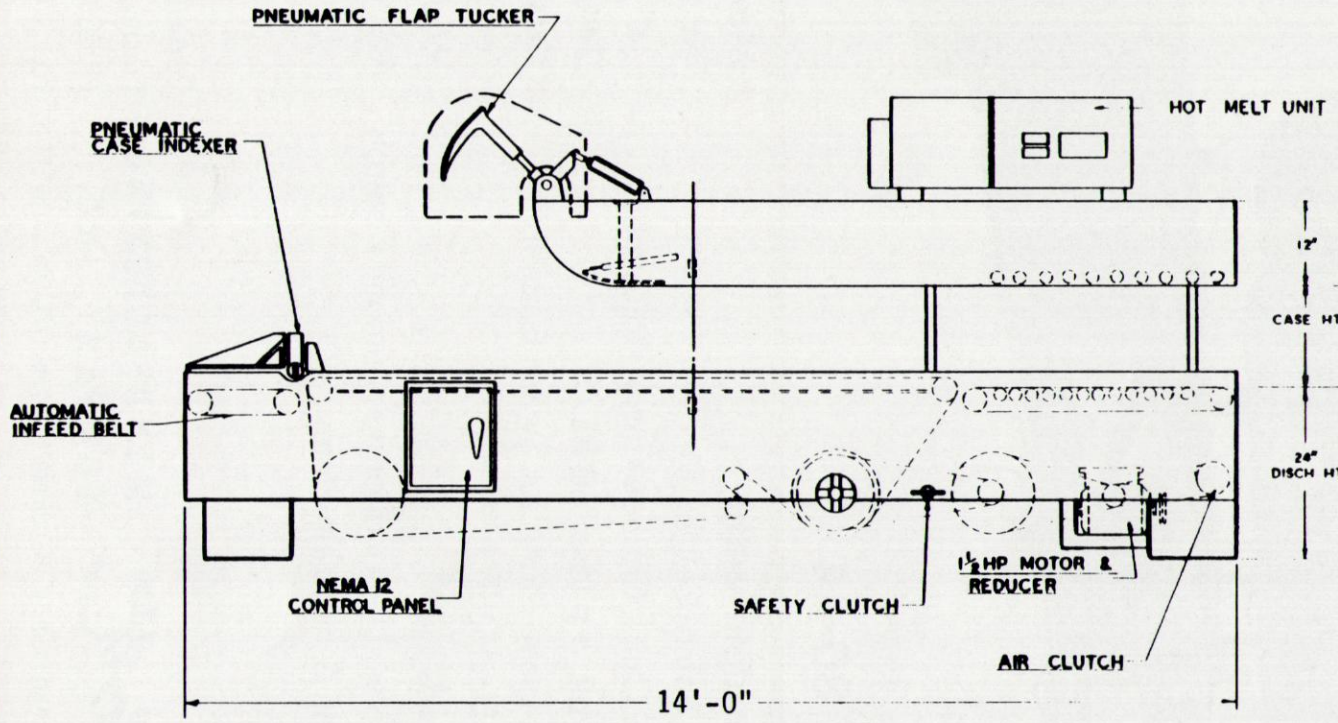
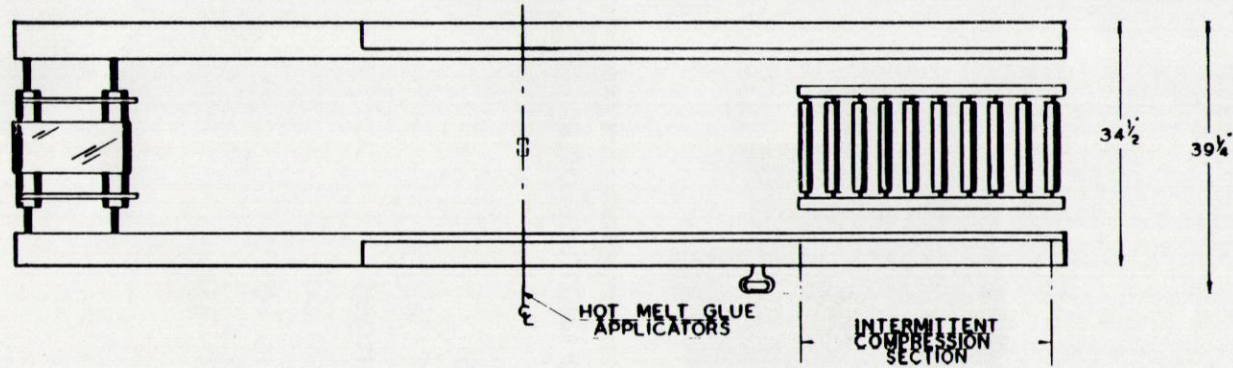
DESIGN ENGINEERS AND MANUFACTURERS OF FOOD PROCESSING AND PACKAGING MACHINERY

2664 S. Cherry  
Fresno, CA 93706  
Ph 209/233-8231  
Fax 209/233-9898

P.O. Box 11277  
Fresno, CA 93772

**Packaging - Processing  
Bid on Equipment**

1-847-683-7720  
[www.bid-on-equipment.com](http://www.bid-on-equipment.com)



*Elliott* ESTABLISHED 1911  
**Manufacturing Co.**  
ENGINEERING DEPARTMENT

FOOD, FEED AND SPECIAL MACHINERY - FRESNO, CALIFORNIA

<small>DWG BY</small> JOHN	OUTLINE DIMENSIONS Model 80-14  AUTOMATIC CASE SEALER	<small>DATE</small>	<small>REV</small>
<small>CHECKED BY</small>		<small>DATE</small>	<small>REV</small>
<small>SCALE</small>		<small>DATE</small>	<small>REV</small>
<small>BY DWG</small>		<small>DATE</small>	<small>REV</small>

7250