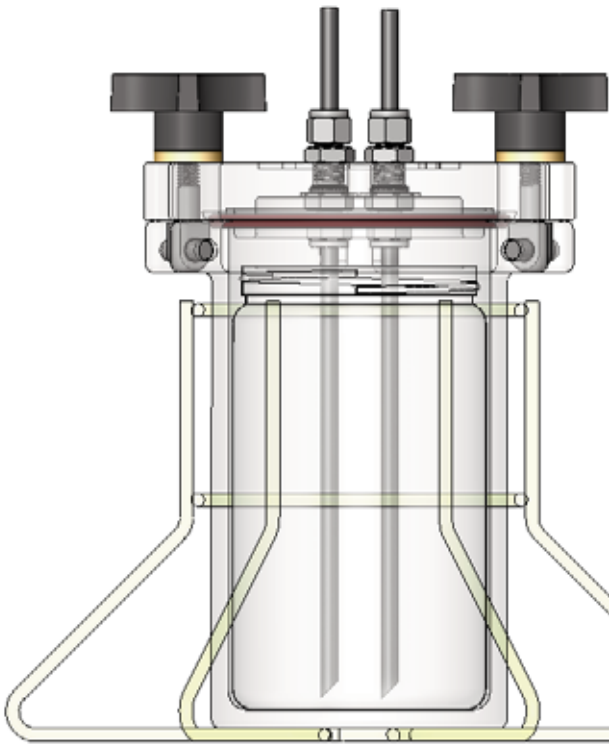


1 Liter Tank Operating Manual



TM

This manual contains important warnings and instructions.
Read and retain for future reference.

Electronic pdf files of EFD[®] manuals are also available at www.efd-inc.com

Contents

Safety.....	3
Preventative Maintenance	4
Setup	5
Specifications.....	6
Replacement Parts.....	7
Warranty	Back Cover

This manual is for the express and sole use of EFD purchasers and users, and no portion of this manual may be reproduced in any form.

Safety Warnings

Note: Please read the EFD product safety statement included in the package. Follow all appropriate safety instructions.

Equipment Misuse Hazard

GENERAL SAFETY – Any use of the reservoir and related accessories not consistent with that described in this manual, such as modifying or removing parts, over-pressurizing, using incompatible fluids and chemicals, or using worn, damaged or incompatible parts can cause them to rupture resulting in serious bodily injury, including fluid splashed in the eyes or on the skin, or fire, explosion or other property damage. NEVER alter or modify any part of this equipment, as doing so may cause it to malfunction. CHECK all system components regularly and replace any worn or damaged parts with only EFD supplied or approved parts. BE SURE that all dispensing equipment and accessories are rated to withstand the maximum operating pressure of the reservoir.

Personal Protective Equipment

Wear all protective eyewear, gloves, clothing and respirator as recommended by the manufacturer of the fluid used.

Fluid Compatibility

BE SURE that all fluids, including their vapors, contained in the reservoir are compatible with all materials on the wetted materials list on page 6 of this manual. Read the fluid manufacturer's literature, including the MSDS (Material Safety Data Sheet) and observe all warnings before pouring the fluid into the reservoir.

Fill Level

DO NOT overfill the reservoir. The recommended maximum fill level is 38.1 mm (1.5") below the top of the liner.

Tipping and Dropping Hazard

BE SURE that the reservoir is placed on a hard, level surface and that all tubing lengths are of sufficient length to allow free motion of all movable components attached to the reservoir. DO NOT pull on tubing to move the reservoir. Tipping the reservoir or otherwise supporting it on its side can cause the system to run dry resulting in possible pump damage. If any system component parts are damaged or worn, they must be replaced with EFD supplied or approved parts before returning to service.

Preventative Maintenance

As part of maintaining continuous trouble-free use of this product, EFD recommends a few very simple preventative maintenance checks.

1. Periodically inspect tube to fitting connections for proper fit. Secure as necessary.
2. Check tubing for cracks and contamination. Replace tubing as necessary.
3. Check all wiring connections for looseness. Tighten as necessary.
4. If front panel of 8040 controller requires cleaning, use a clean, soft damp rag with a mild detergent cleaner. DO NOT USE strong solvents (acetone, MEK, etc.) as they will damage the front panel material.



Turn off pump enclosure assembly before servicing any 781RC recirculating system components.

RoHS标准相关声明 (China RoHS Hazardous Material Declaration)

产品名称 Part Name	有害物质及元素 Toxic or Hazardous Substances and Elements					
	铅 Lead (Pb)	汞 Mercury (Hg)	镉 Cadmium (Cd)	六价铬 Hexavalent Chromium (Cr6)	多溴联苯 Polybrominated Biphenyls (PBB)	多溴联苯醚 Polybrominated Diphenyl Ethers (PBDE)
外部接口 External Electrical Connectors	X	0	0	0	0	0
<p>0: 表示该产品所含有的危险成分或有害物质含量依照EIP-A, EIP-B, EIP-C的标准低于SJ/T11363-2006 限定要求。 Indicates that this toxic or hazardous substance contained in all the homogeneous materials for this part, according to EIP-A, EIP-B, EIP-C is below the limit requirement in SJ/T11363-2006.</p> <p>X: 表示该产品所含有的危险成分或有害物质含量依照EIP-A, EIP-B, EIP-C的标准高于SJ/T11363-2006 限定要求。 Indicates that this toxic or hazardous substance contained in all the homogeneous materials for this part, according to EIP-A, EIP-B, EIP-C is above the limit requirement in SJ/T11363-2006.</p>						

Setup

Prior to installing this system, please read the associated spray valve and valve controller operating instructions to become familiar with the operation of all components of the spray system. Select appropriate system setup location for all system components - Pump Enclosure, 1-liter reservoir, VM8040, and 781RC Spray Valve

Important Note: Turn pump enclosure power switch to OFF and insure speed control is turned fully counter-clockwise to OFF position.

1. Cut feed tube hose to desired length and install into tank lid outlet port. Insert tube to bottom of tank liner. Cut tube at slight angle to avoid fluid blockage at bottom of tank.
2. Connect the fluid supply line from tank outlet to pump inlet compression fitting.
3. Connect the fluid line from pump outlet to the 781RC inlet port compression fitting.
4. Cut recirculation feed hose to desired length and install into tank lid recirculation port. Insert recirculation hose to bottom of 1-liter liner. Cut tube at slight angle to avoid fluid blockage at bottom of tank. Attach other end to 781RC recirculation port outlet compression fitting.
5. Fill reservoir by pouring fluid directly into tank liner or manufacturer's bottle placed inside reservoir. Secure cover.

*Note: There is no defined tank INLET/OUTLET porting. Be certain tubing connections follow proper routing for recirculation function.

Specifications*

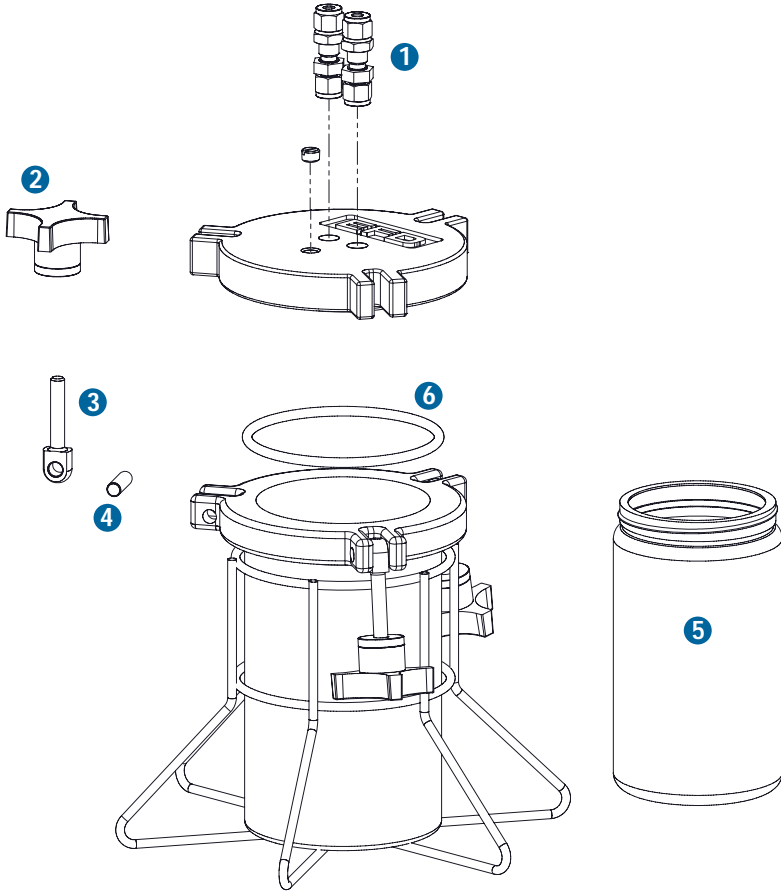
Capacity:	1 Liter
Weight:	3.0 kg (6.60 lbs)
Height:	350 mm (13.75 inches)
Diameter (Cover Maximum):	172 mm (6.75 inches)
Wetted Materials:	Liner: polyethylene Tubing: polyethylene**

*Refer to Specifications Page in 781S Installation Guide for reference to wetted materials.

**Use only EFD supplied polyethelene tubing for applications that use solvent based liquids.

Note: Specifications and technical details are subject to engineering changes without prior notification.

Replacement Parts



- | | | |
|----|----------------|------------------------------------|
| 1. | Part # 7020133 | Fitting, bulkhead for 1/4" OD tube |
| 2. | Part # 7020127 | Knob |
| 3. | Part # 7020126 | Bolt |
| 4. | Part # 7020097 | Dowel pin |
| 5. | Part # 7020115 | Tank liner |
| 6. | Part # 7020094 | Cover O-ring Buna (Standard) |
| | Part # 7020096 | Cover O-ring Viton® (optional) |
| | Part # 7020095 | Cover O-ring EPR (optional) |

EFD ONE YEAR LIMITED WARRANTY

All components of the EFD 781RC Recirculation Pump System are warranted for one year from date of purchase to be free from defects in material and workmanship (but not against damage caused by misuse, abrasion, corrosion, negligence, accident, faulty installation or by dispensing material incompatible with equipment) when the equipment is installed and operated in accordance with factory recommendations and instructions. EFD will repair or replace free of charge any part of the equipment thus found to be defective, on authorized return of the part prepaid to our factory during the warranty period.

In no event shall any liability or obligation of EFD arising from this warranty exceed the purchase price of the equipment. This warranty is valid only when oil-free, clean, dry, filtered air is used.

EFD makes no warranty of merchantability or fitness for a particular purpose. In no event shall EFD be liable for incidental or consequential damages. This equipment is regulated by the European Union under WEEE Directive (2002/96/EC).

See www.efd-inc.com for information about how to properly dispose of this equipment.



For EFD sales and service in over 30 countries,
contact EFD or go to www.efd-inc.com

EFD, Inc.

East Providence, RI USA
USA & Canada: 800-556-3484; +1-401-431-7000
info@efd-inc.com www.efd-inc.com

EFD International Inc.

Dunstable, Bedfordshire, UK
0800 585733 or +44 (0) 1582 666334
Ireland 00800 8272 9444
europe@efd-inc.com www.efd-inc.com

EFD, Inc., Asia

China: +86 (21) 3866 9006
china@efd-inc.com www.efd-inc.com
Singapore: +65 6796 9630 sin-mal@efd-inc.com

The Wave Design is a trademark of Nordson Corporation.
©2009 Nordson Corporation 1LITANK-MAN-01 7014464 v011909



This equipment is regulated by the European Union under WEEE Directive (2002/96/EC). See www.efd-inc.com for information about how to properly dispose of this equipment.