

**BUILT RIGHT - PRICED RIGHT**

# EASTEY

*Shrink Packaging Equipment for the Shrinking World*

## SHRINK TUNNELS INTERMEDIATE



**Shrink Packaging  
Equipment  
for the  
Shrinking World**

### MODELS

ET1610-36 ET1610-48  
CHAMBER HEIGHTS: 10"  
CHAMBER WIDTHS: 16"

Stainless steel models by special order.

ET1610-36, ET1610-48 MODELS  
ARE UL-APPROVED

## BUILT RIGHT...PRICED RIGHT

Proven over and over again, these EASTEY Shrink Tunnels provide you with all the quality features found in much higher priced machines. They are designed and built to give you all the performance features needed for positive shrink in many kinds of Shrink Wrap requirements

All controls are mounted on a pull-down panel for easy set-up and maintenance. Ruggedly built with an all-welded steel base, these units provide the power and versatility needed to get your job done for a wide range of applications.

### EASTEY ENTERPRISES, INC.

21480 - 147th Ave North, Rogers, MN 55374  
Phone: 763/428-4846 Fax: 763/428-8361 Toll Free 800/835-9344  
[www.eastey.com](http://www.eastey.com) [eastey@eastey.com](mailto:eastey@eastey.com)  
Copyright © 2005 Eastey Enterprises, Inc., All Rights Reserved

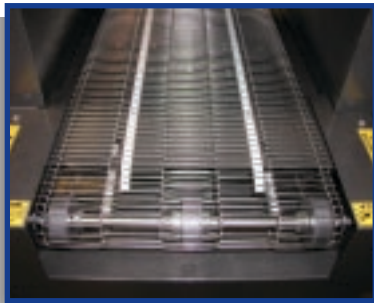
**Packaging - Processing  
Bid on Equipment**  
1-847-683-7720  
[www.bid-on-equipment.com](http://www.bid-on-equipment.com)

# RUGGED DESIGN SIMPLICITY

## STANDARD FEATURES

- Positive Shrinking of all products assured with 4-directional air flow (2 sides, top and bottom).
- Bases supplied with locking casters and leveling adjusters.
- Variable Speed Conveyor has rollers on 1-1/2" centers.
- Stainless Steel Mesh Conveyor, or "Live" Rollers; optional "dead" rollers on request.
- Sealed Bearings - not bushings - on drive and idler shafts.
- Variable speed air flow will increase the air velocity and is more evenly dispersed.
- Conveyor belt speed 67 feet per minute
- 440 or 480 Volt Available.
- Chain Drive powered by an Industrial Gear Motor.
- Solid State Temperature Controller.
- Removable Air Return Screen.
- Quiet, Safe Conveyor Operation.
- Tube, High Speed, & Bundling Tunnels - see separate brochure.
- Larger air ducting to create more air volume.
- Tunnel runs cooler & are more energy efficient.
- Over temperature protection.
- Delayed cool down.
- 7.5 KW heater bank.

### STAINLESS STEEL MESH CONVEYOR



**NO EXTRA CHARGE IF ORDERED AS ORIGINAL EQUIPMENT**

### FOLD-DOWN CONTROL PANEL FOR EASE IN SERVICING



## WEIGHT, POWER REQUIREMENTS, DIMENSIONS

EASTEY SHRINK TUNNEL MODELS	MACHINE DIMENSIONS (in)				MACHINE DIMENSIONS (cm)				STANDARD POWER			WEIGHT		CRATED SHP WGT	
	W	x	H	L	W	x	H	L	VOLTS	AMPS	PHASE	(lbs)	(kg)	(lbs)	(kg)
ET1610-36	28.5	x	64	x 49	72.4	x	162.6	x 124.5	220	40/25	1/3	550	250	750	341
ET1610-48	28.5	x	64	x 61	72.4	x	162.6	x 155	220	40/25	1/3	650	296	850	386

## TUNNEL CHAMBER, ROLLER AND CONVEYOR DIMENSIONS

MODELS	CHAMBER DIMENSIONS (in)				CHAMBER DIMENSIONS (cm)				ROLLER WIDTH		CONVEYOR LENGTH	
	W	x	H	L	W	x	H	L	(in)	(cm)	(in)	(cm)
ET1610-36	16	x	10	x 36	40.62	x	25.40	x 91.44	16	40.64	48	121.92
ET1610-48	16	x	10	x 48	40.62	x	25.40	x 121.92	16	40.64	60	152.40

### PRODUCTION WIZARD EASTEY COMBO UNIT



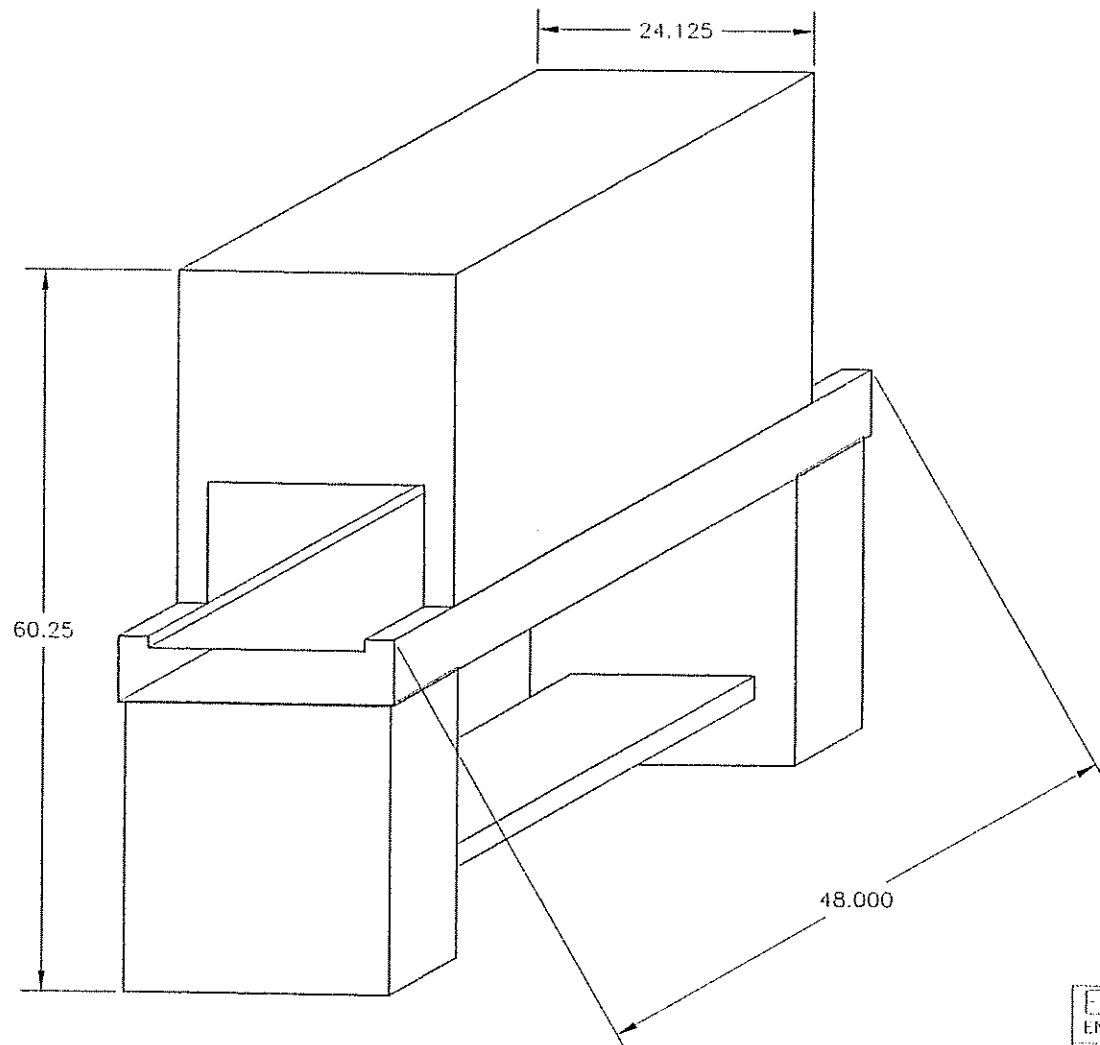
**MODEL EM16TT**

**MT SERIES AND TT SERIES.** Sealer and Tunnel on a common frame; quick set-up, matching Sealer and Tunnel for perfect alignment and product transfer. Two series - 2 Models each seal size, 16" x 20" 28" x 20".

(Rev. 2/09)

**Packaging - Processing**  
**Bid on Equipment**  
**1-847-683-7720**  
**www.bid-on-equipment.com**

**BUILT RIGHT - PRICED RIGHT**



REV.	DESCRIPTION	REVISIONS	DATE	APPROVED

EASTEY ENTERPRISES		Title	
EM1610-36		EM1610-36	
Tolerance	Scale	Material	
±.010 (UNLESS SPECIFIED)	10:1	N/A	
Drafter		Part Numbers	
TROY S.		W1610-36	
CHK By	Date	Part size	
	3-5-98	N/A	

