

# EASTEY SEALER SPECIFICATIONS

**EM-T SERIES:** MANUAL L-Sealer with powered takeaway conveyor, magnet clamping, cycle timing, pin perf, film clamps, base and spare parts.

**BUILT RIGHT - PRICED RIGHT**



*Shrink Packaging Equipment for the Shrinking World*

## SEALERS w/hot wire seal systems



**EM16T**

**Shrink Packaging Equipment for the Shrinking World**

**SEAL SIZES in inches**  
 16, 28, 40, 50, 70 x 20  
 40, 50, 70 x 30  
 40, 50, 70 x 40

80 & 100 x 20, 30, & 40 available in hot knife only - see hot knife (DouSeal®) brochure



**EM3040T with 480 Volt option**



**EM4040T with power unwind**



**EM50T**

**EM-T-SERIES:** Manual L-Sealer with powered takeaway conveyor, magnet clamping, automatic cycle timing, pin perf, seal sizes up to 30" x 40" series includes seal clamps, base, and spare parts kit.

**Maximum Film Widths:**

- 20" side seal sealers - 24"
- 30" side seal sealers - 34"
- 40" side seal sealers - 44"

**Maximum Roll O.D.:** 12", 10" if sealer has a powered film unwind.



Made in the USA

MODEL	SEAL DIMENSIONS			MACHINE DIMENSIONS				POWER REQUIREMENTS			WEIGHT	CRATED SHP WT.	
	FRONT	x	SIDE	W	x	H	x	L	VOLTS	PHASE			AMPS
EM16T	(in) 16	x	20	34	x	44	x	63	220	1	20	500lbs	700lbs
	(cm) 40.64	x	50.80	86.36	x	111.76	x	160.02	220	1	20	228kg	319kg
EM28T	(in) 28	x	20	34	x	44	x	84	220	1	20	550lbs	750lbs
	(cm) 71.12	x	50.80	86.36	x	111.76	x	213.36	220	1	20	250kg	341kg
EM40T	(in) 40	x	20	34	x	44	x	106	220	1	20	650lbs	850lbs
	(cm) 101.60	x	50.80	86.36	x	111.76	x	269.24	220	1	20	296kg	387kg
EM50T	(in) 50	x	20	34	x	44	x	126	220	1	30	750lbs	950kg
	(cm) 127.00	x	50.80	86.36	x	111.76	x	320.04	220	1	30	341kg	432kg
EM70T	(in) 70	x	20	34	x	44	x	167	220	1	30	850lbs	1050lbs
	(cm) 177.80	x	50.80	86.36	x	111.76	x	424.18	220	1	30	387kg	478kg
EM3040T	(in) 40	x	30	43	x	44	x	106	220	1	20	1000lbs	1300lbs
	(cm) 101.60	x	76.20	109.22	x	111.76	x	269.24	220	1	20	455kg	591kg
EM3050T	(in) 50	x	30	43	x	44	x	126	220	1	30	1100 lbs	1400kg
	(cm) 127.00	x	76.20	109.22	x	111.76	x	320.04	220	1	30	500kg	637kg
EM3070T	(in) 70	x	30	43	x	44	x	167	220	1	30	1200lbs	1500lbs
	(cm) 177.80	x	76.20	109.22	x	111.76	x	424.18	220	1	30	546kg	682kg
EM4040T*	(in) 40	x	40	53	x	44	x	106	220	1	30	1400lbs	1700lbs
	(cm) 101.60	x	101.60	134.62	x	111.76	x	269.24	220	1	30	637kg	774kg
EM4050T*	(in) 50	x	40	53	x	44	x	126	220	1	30	1500lbs	1900lbs
	(cm) 127.00	x	101.60	134.62	x	111.76	x	320.40	220	1	30	683kg	864.50kg
EM4070T*	(in) 70	x	40	53	x	44	x	167	220	1	30	1700lbs	2100lbs
	(cm) 177.80	x	101.60	134.62	x	111.76	x	424.18	220	1	30	774kg	956kg

\*Powered film unwind included

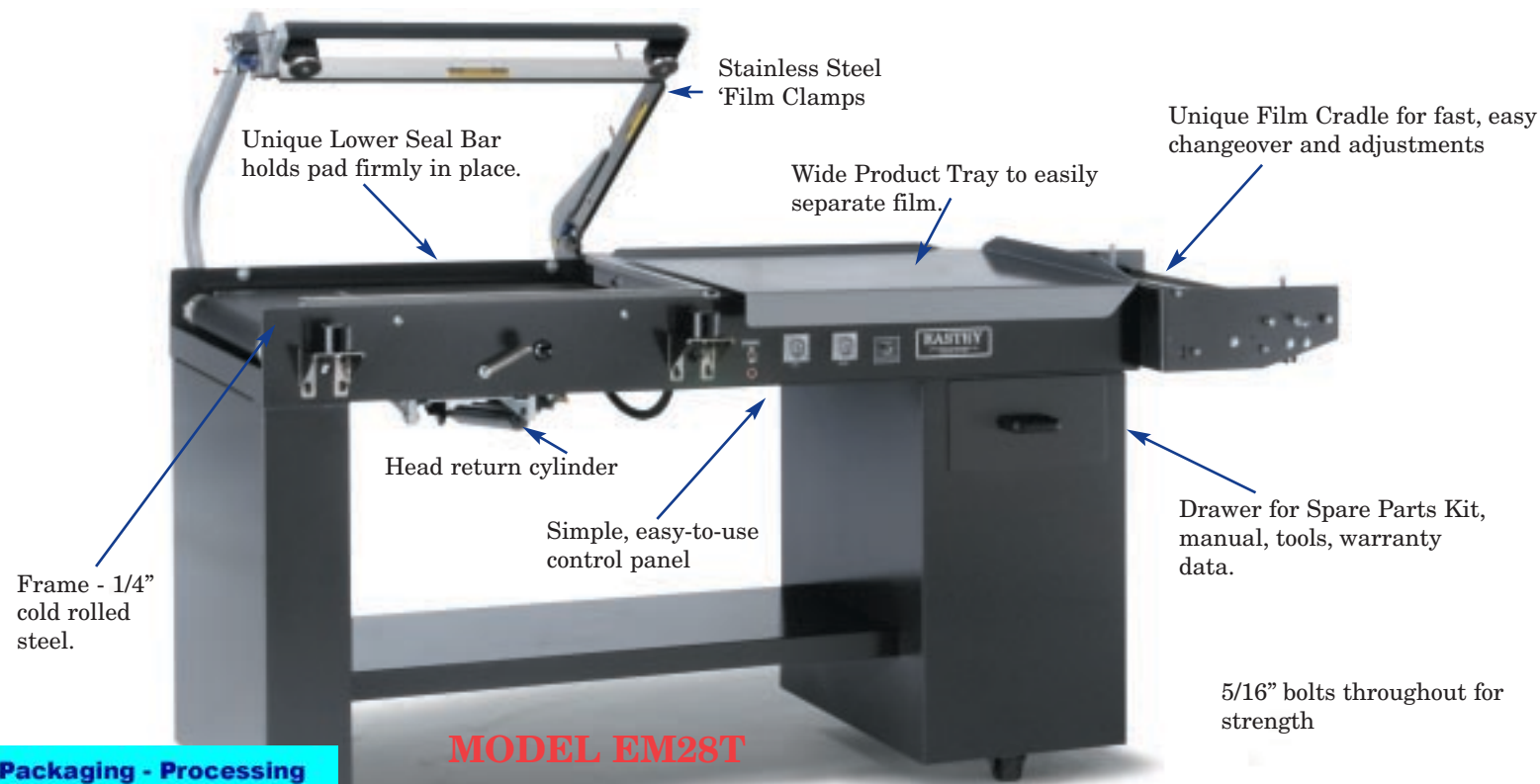
**Packaging - Processing**  
**Bid on Equipment**  
 1-847-683-7720  
[www.bid-on-equipment.com](http://www.bid-on-equipment.com)

**EASTEY ENTERPRISES, INC.**  
 21480 147TH AVE. NO., ROGERS, MN 55374  
 PHONE: 763/428-4846  
 FAX: 763/428-8361  
 TOLL FREE: 800/835-9344  
[www.eastey.com](http://www.eastey.com) [eastey@eastey.com](mailto:eastey@eastey.com)

Copyright © 2005 Eastey Enterprises, Inc., All Right Reserved

(Rev. 6/07)

# BUILT RIGHT . . . PRICED RIGHT



Packaging - Processing  
**Bid on Equipment**  
 1-847-683-7720  
[www.bid-on-equipment.com](http://www.bid-on-equipment.com)

## STANDARD FEATURES

Standard features common to all EASTEY Sealers (except Econo Series Sealers) include; all welded frame of 1/4" cold rolled steel...5/16th bolts holes throughout for strength and commonality of parts; locking 3" swivel casters; Parts Drawer in base leg with Spare Parts Kit and Instruction Manual. Frame is pre-drilled for addition of optional components when required. Seal Head Casting equipped with Head Return Cylinder. Wiring is numbered and color coded for easy repair and replacement. Wide Product Tray with film separation lip for more work room and

operating ease. LEFT HAND MODELS AVAILABLE IN ALL SERIES (except Econos). Optional features include Power Film Unwind and inverting Head, and DuoSeal® Continuously Heated Seal Bar. **Spare Parts Kit:** All hot wire sealers (except Econos) supplied with Operation and Parts Manual; 50ft. of .036 half hard nichrome seal wire(19 gauge), 10 yds. x 3/4" x 10 mil teflon tape, 10 yds x 1/2" x 10 mil teflon tape, 2 heat sinks, 1 knurled nut, 4' x 3/4" wide x 1/4" thick sponge rubber, two 1 Amp fuses.

### You'll get more with EASTEY

- Rugged, long life design
- Unique Film Cradle for quick, easy film adjustment and changeover.
- Positive actuation of Hole Punch and Seal System
- Smooth Seal Head Return with Return Cylinder
- Food Application Finish
- White Takeaway Belt
- USDA Approved
- Stainless Steel Models Available
- Double Film Rack
- Film Inverter
- Power Film Unwind
- Special Product Guides
- Special Products and Projects
- Custom Product Trays
- Electric Hole Punch or Pin Perf
- Easy to operate, maintain and service.
- Heavy-duty Base with tool and parts Drawer

**CALL US!  
 TODAY**

**EXPANDABLE, TOO**

EASTEY L-Bar Sealer frames are pre-drilled to accept options you may want to add to your machine later, saving installation time and money. For example, you buy a M-Series. Order the Conveyor kit and install it easily within hours. No modifications necessary. Kits are sold at low prices compared to the cost of a new machine.

## CRADLE STYLE FILM RACK



Simple positioning of the film roll provides quick, easy film adjustments and product changeover.

## PIN PERF



Pin Perf or Electric Hole Punch provides air evacuation. No extra charge if ordered as original equipment.

## EXCITING OPTIONS

### HOT KNIFE SEAL SYSTEM DUOSEAL® BY REYNOLDS



Hot Knife system features a continuously heated seal bar and is available on most EasteY Sealers. See **HOT KNIFE DUOSEAL® BY REYNOLDS EASTEY brochure.**

### POWER FILM UNWIND

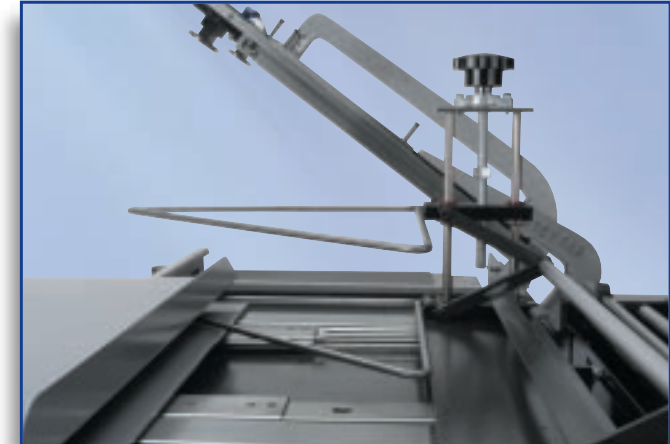


Power assisted rollers accommodate 2 rolls of film. Easy to follow film threading diagram shows how to guide film through the unwind. Effortless operation reduces operator fatigue and increases product output.

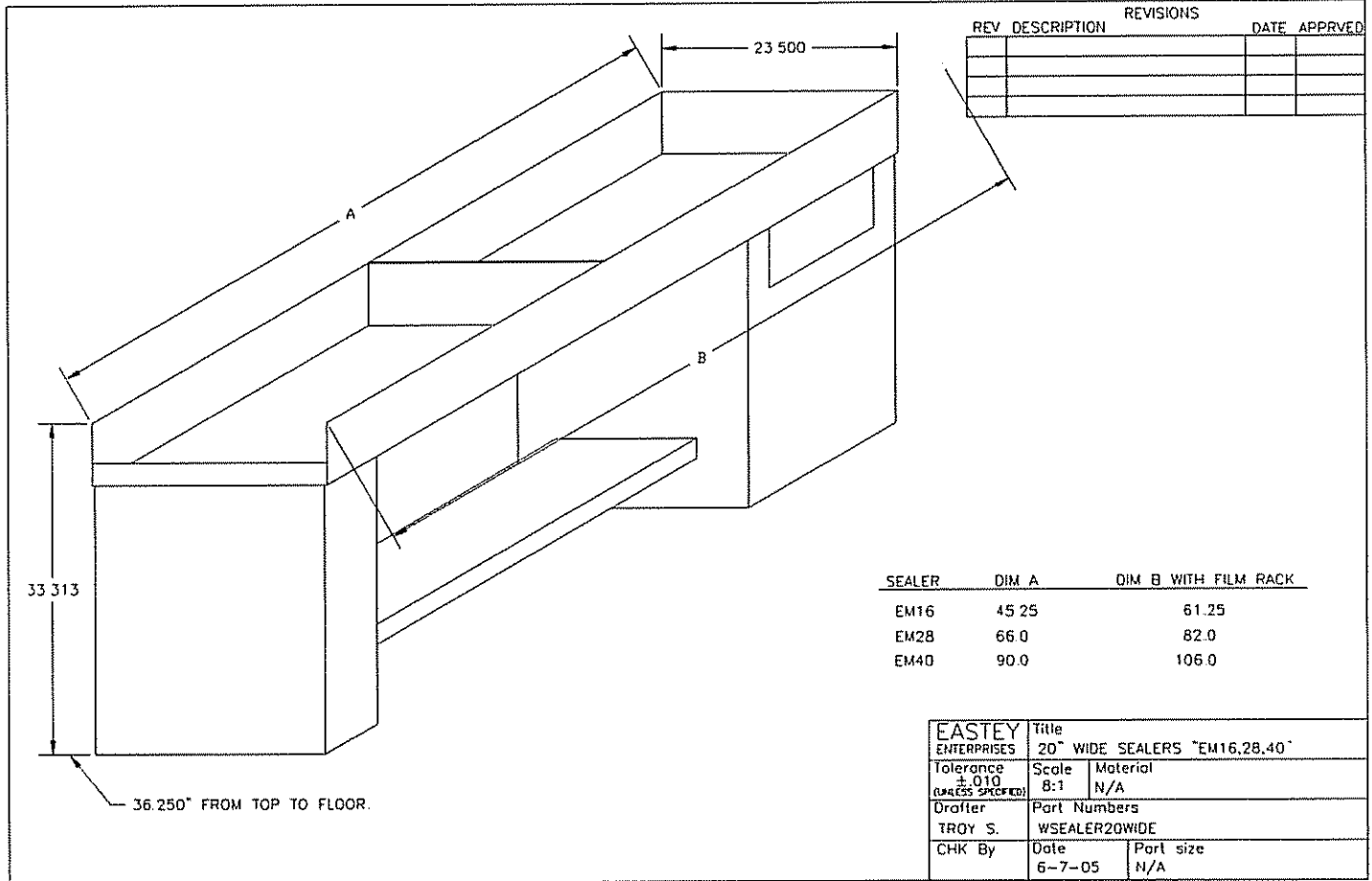
### INVERTING HEAD



Inverting head allows the film to come off the back of machine. This pre-opens the film and minimizes operator effort which in turn increases output.



Unique design detaches the product tray from the inverting head, which simplifies film threading to a push of the film towards the seal area. The product tray is locked back in position and the pre-opened film is ready to accept product.

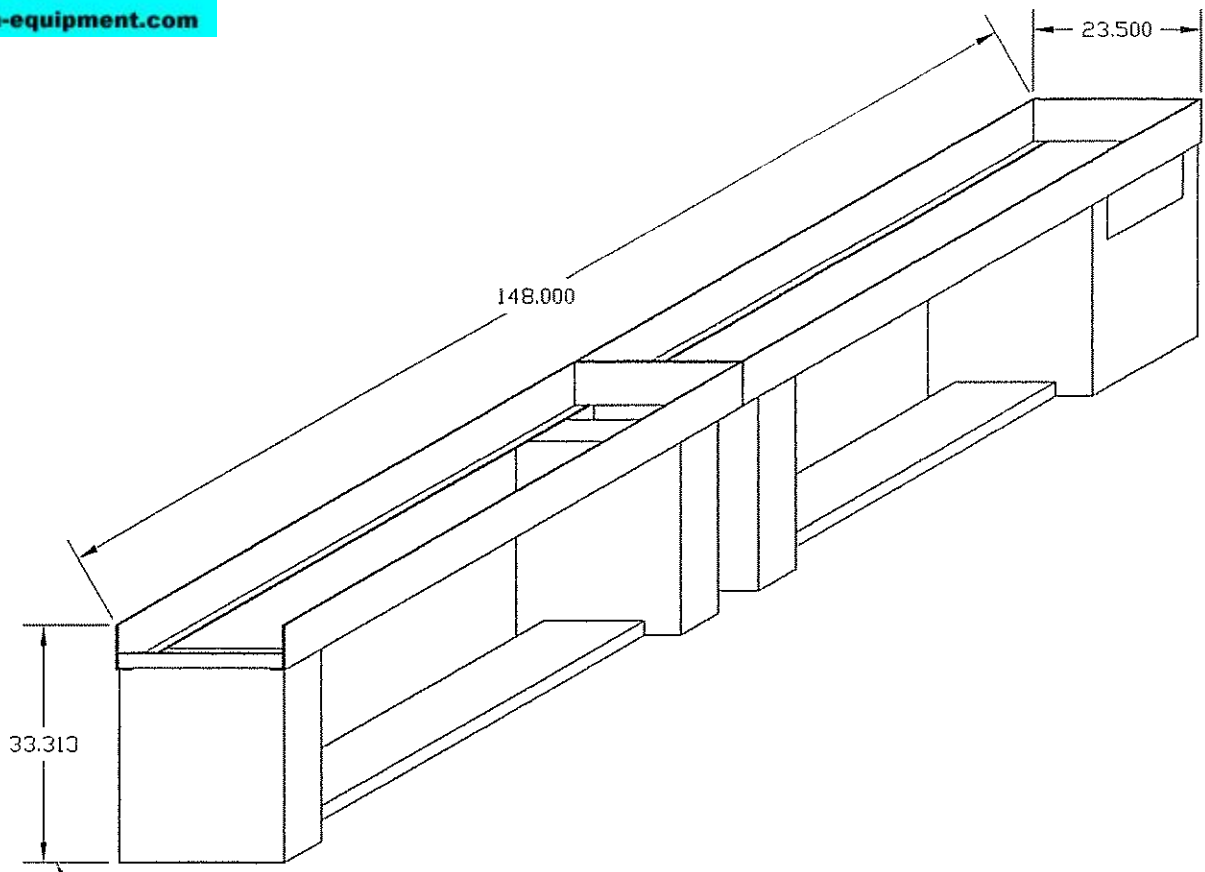


REV	DESCRIPTION	REVISIONS	DATE	APPROVED

SEALER	DIM A	DIM B WITH FILM RACK
EM16	45.25	61.25
EM28	66.0	82.0
EM40	90.0	106.0

EASTEY ENTERPRISES	Title 20" WIDE SEALERS "EM16,28,40"	
Tolerance + .010 (UNLESS SPECIFIED)	Scale 8:1	Material N/A
Drafter TROY S.	Part Numbers WSEALER20WIDE	
CHK By	Date 6-7-05	Part size N/A

REV	DESCRIPTION	REVISIONS	
		DATE	APPROVED

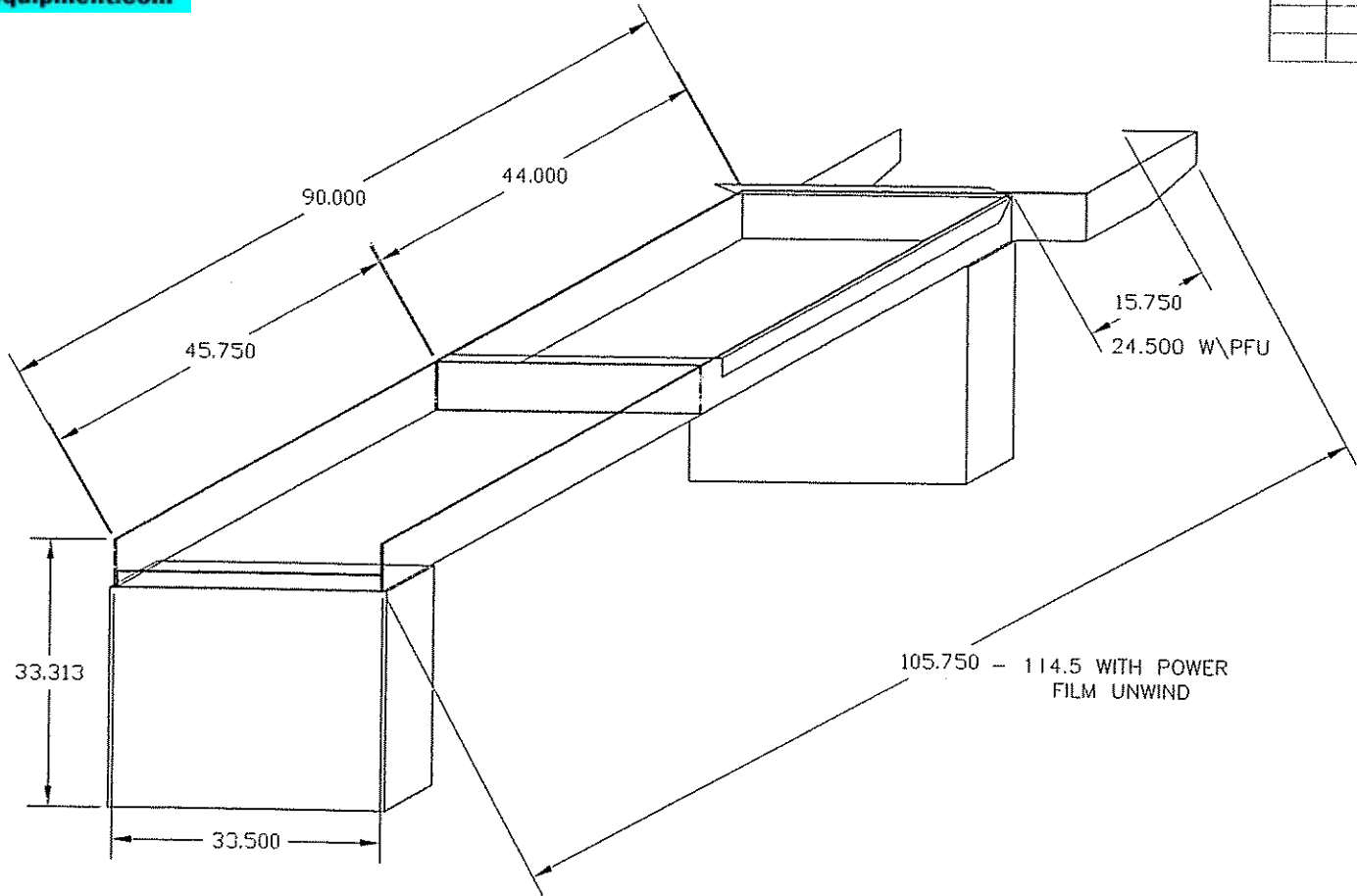


NOTE: ADD 16" FOR FILM RACK  
 164" LONG WITH FILM RACK

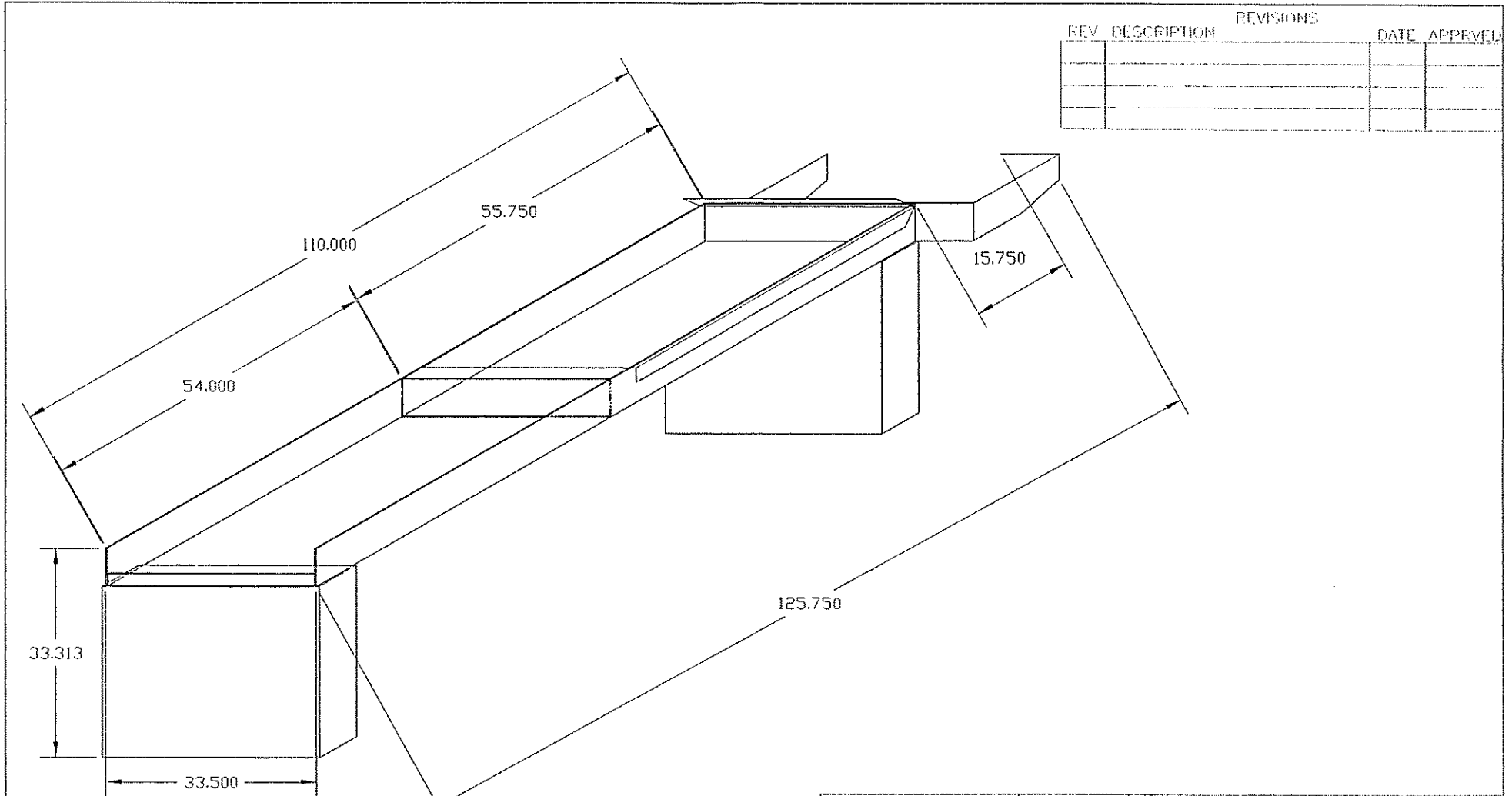
36.250" FROM TOP TO FLOOR.

EASTEY ENTERPRISES		Title EM 20 x 70 SCALER	
Tolerance ±.010 (UNLESS SPECIFIED)	Scale 16:1	Material N/A	
Drafter TROY S.		Part Numbers WIRE2070	
CHK By	Date 5-16-02	Part size 0.000 x 0.000	

REV	DESCRIPTION	REVISIONS	DATE	APPROVED



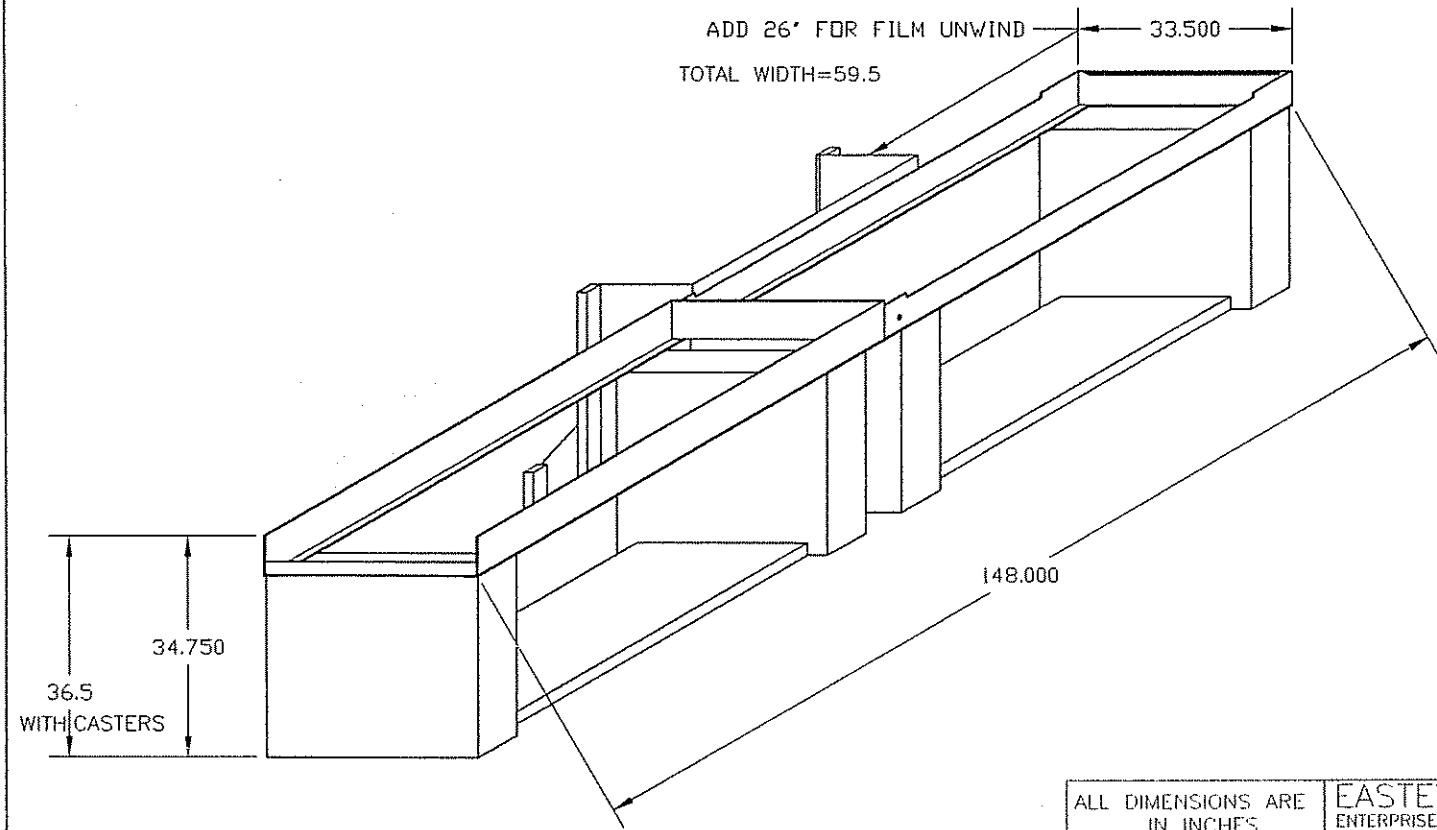
ALL DIMENSIONS ARE IN INCHES	EASTEY ENTERPRISES	Title EM30 x 40 SEALER	
ALL TOLERANCES TO BE ±.01 UNLESS OTHERWISE SPECIFIED	Tolerance ±.010 (UNLESS SPECIFIED)	Scale 14:1	Material NA
FINISH - NONE	Drafter TROY S.	Part Numbers WIRE3040	
	CHK By	Date 9-20-00	Part size 0.000 x 0.000



REV		DESCRIPTION	REVISIONS		DATE	APPROVED

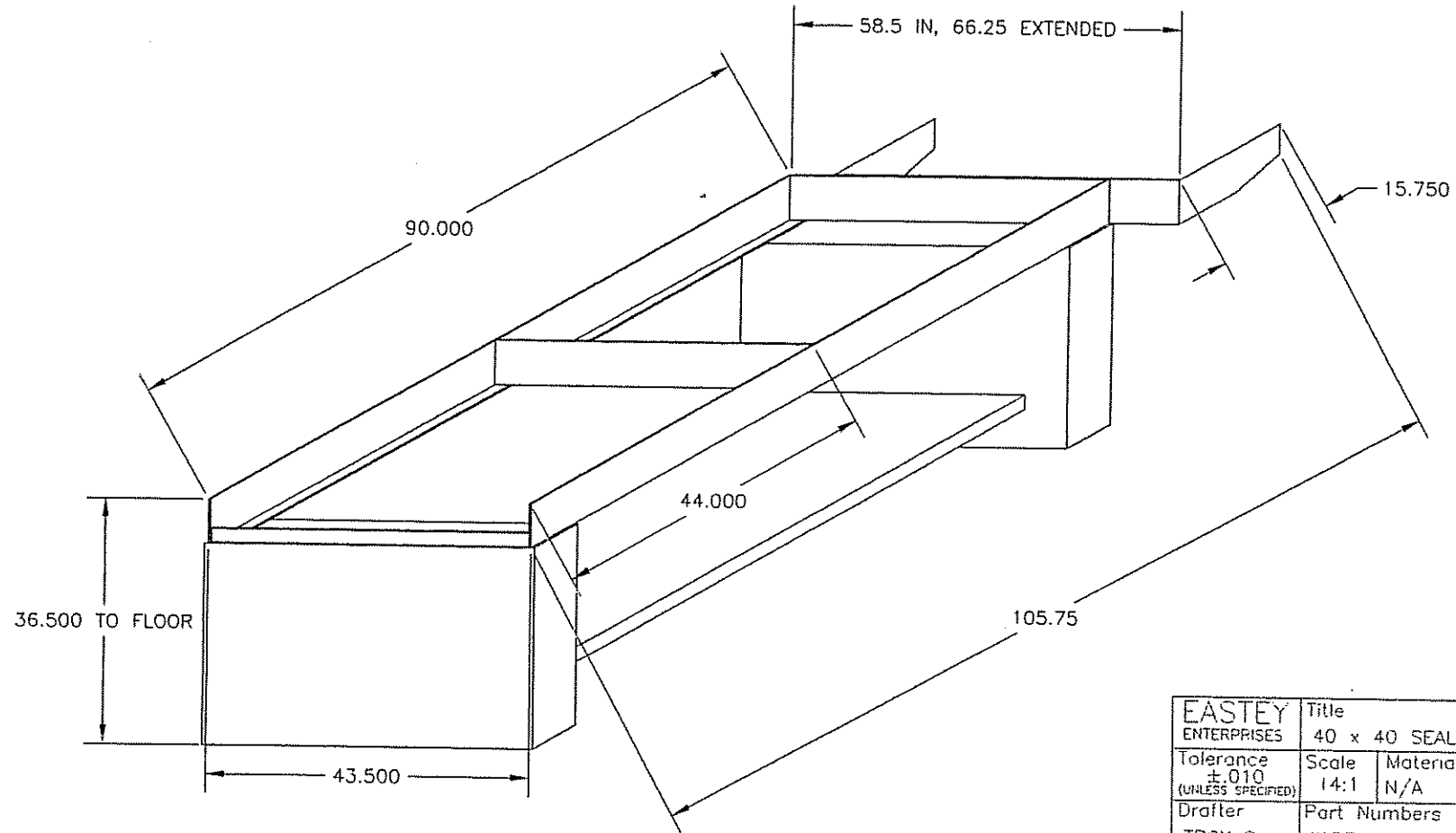
ALL DIMENSIONS ARE IN INCHES	EASTEY ENTERPRISES	Title EM 30 x 50 SEALER	
ALL TOLERANCES TO BE ±.01 UNLESS OTHERWISE SPECIFIED	Tolerance: ±.010 (UNLESS SPECIFIED)	Scale 14:1	Material NA
FINISH - NONE	Drafter TROY S.	Part Numbers WIRE3050	
	CHK By	Date 9-20-00	Part size 0.000 x 0.000

REV DESCRIPTION		REVISIONS		DATE	APPROVED



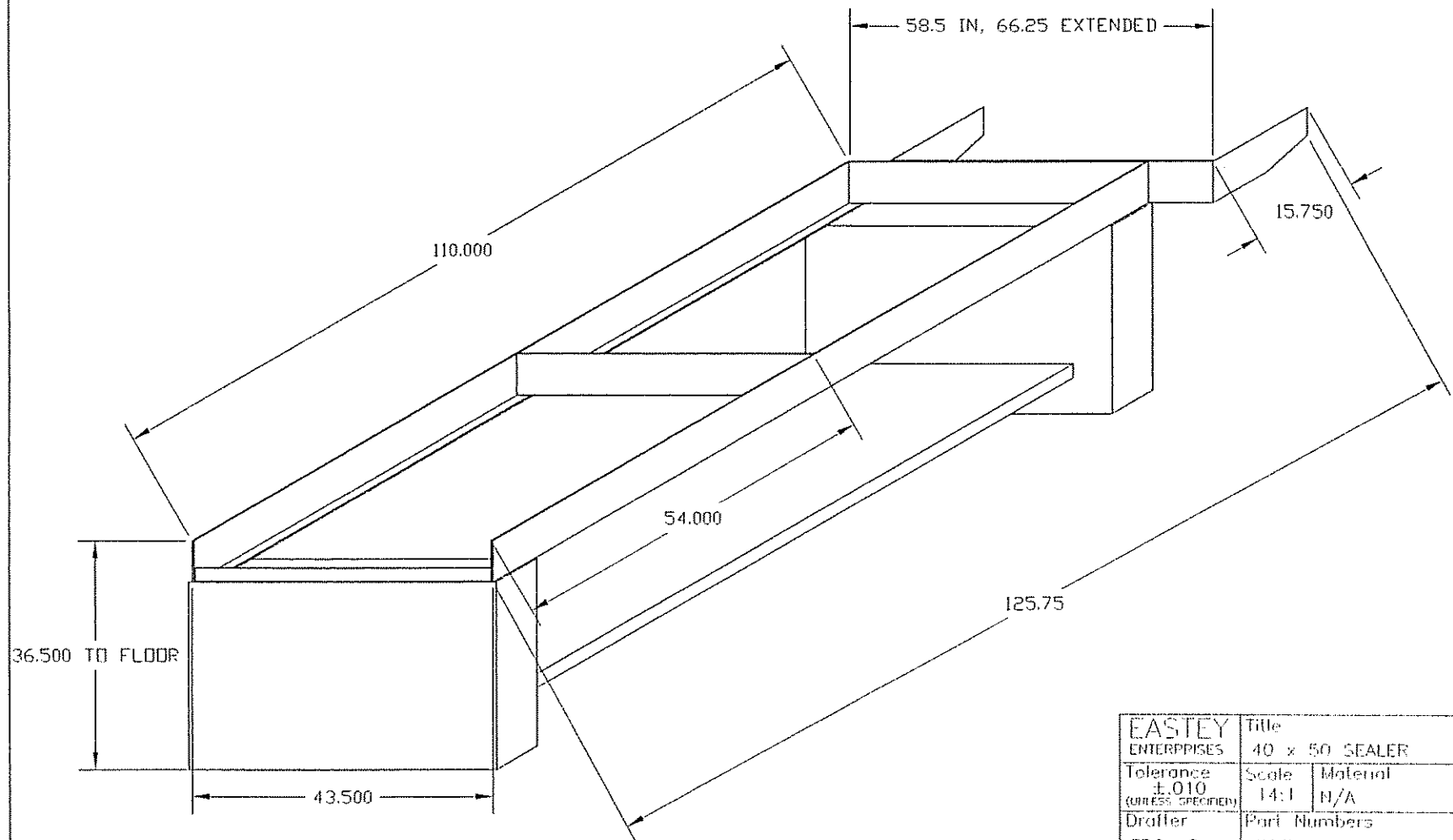
ALL DIMENSIONS ARE IN INCHES	<b>EASTEY ENTERPRISES</b>	Title LINE DRAWING 30 x 70	
ALL TOLERANCES TO BE ±.01 UNLESS OTHERWISE SPECIFIED	Tolerance ±.010 (UNLESS SPECIFIED)	Scale 18:1	Material N/A
	Drafter TROY S.	Part Numbers WIRE3070INV	
FINISH - NONE	CHK By	Date 6-25-04	Part size 0.000 x 0.000

REV	DESCRIPTION	REVISIONS	DATE	APPROVED

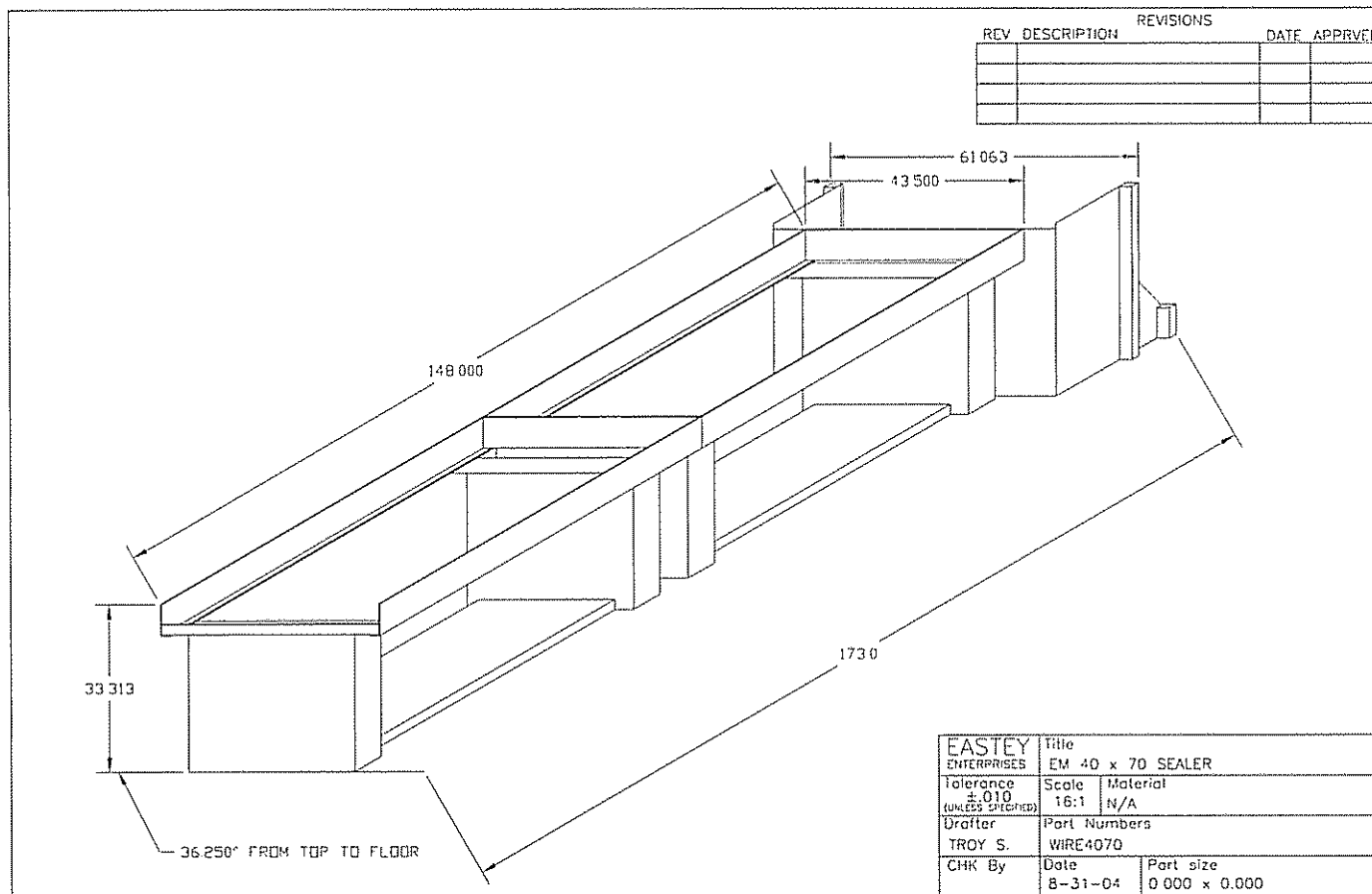


EASTEY ENTERPRISES		Title 40 x 40 SEALER	
Tolerance ±.010 (UNLESS SPECIFIED)	Scale 14:1	Material N/A	
Drafter TROY S.		Part Numbers WIRE4040	
CHK By	Date 9-25-97	Part size 0.000 x 0.000	

REV DESCRIPTION		REVISIONS		DATE	APPROVED



EASTEY ENTERPRISES		Title	
Tolerance ±.010 (UNLESS SPECIFIED)		Scale	Material
Drafter TROY S.		14:1	N/A
CHK By		Part Numbers	
Date		WIRE4050	
5-1-01		Date	Part size
			0.000 x 0.000



REV	DESCRIPTION	REVISIONS	DATE	APPROVED

EASTEY ENTERPRISES		Title	
EM 40 x 70 SEALER		EM 40 x 70 SEALER	
Tolerance ± 0.10 (UNLESS SPECIFIED)	Scale 16:1	Material N/A	
Drafter TROY S.		Part Numbers WIRE4070	
CHK By	Date 8-31-04	Part size 0.000 x 0.000	