

BUILT RIGHT - PRICED RIGHT

EASTEY®

Shrink Packaging Equipment for the Shrinking World

COMBO UNIT



Packaging - Processing
Bid on Equipment
1-847-683-7720
www.bid-on-equipment.com

EM16TT/TTK
EM28TT/TTK

SEAL AREA
16" x 20"
28" x 20"

**TUNNEL
CHAMBER
DIMENSIONS**
16"W x 10"H
16"W x 10"H

TT SERIES: Manual L-Sealer with powered takeaway conveyor, magnet clamping, automatic cycle timing, pin perf, seal clamps, base, and spare parts kit. Seal System available in hot wire or hot knife (DouSeal® by Reynolds).

Note: K=hot knife (DouSeal® by Reynolds).

Sealer and tunnel on a common frame and base allows quick set-up for matching sealer and tunnel for perfect alignment and product transfer every time. A common frame with casters and one power source (disconnect box), makes this equipment very mobile.



Made in the USA

COMBO UNIT

SEALER STANDARD FEATURES

Standard features common to all Series of Sealers include: an all-welded frame of 1/4" cold rolled steel . . . 5/16-inch bolt holes throughout for strength and commonality of parts . . . locking 3-inch swivel casters . . . parts drawer in base leg with spare parts kit and instruction manual . . . frame wired and pre-drilled for

addition of optional components when required . . . seal head casting equipped with double locking bolts and gas shock head return system . . . wiring is numbered and color coded for easy repair and replacement . . . wide product tray for more work room has film separation lip for operation ease.

TUNNEL STANDARD FEATURES

- Positive Shrinking of all products assured with 4-directional air flow (2 sides, top and bottom)
- Bases supplied with locking casters and leveling adjusters
- Variable speed conveyor has rollers on 1-1/2" centers
- Stainless steel mesh conveyor
- Variable speed conveyor
- Variable air flow
- Sealed bearings not bushings on drive and idler shafts
- Chain drive powered by an Industrial Gear Motor
- Solid state temperature controller
- Removable air return screen
- Quiet safe conveyor
- Special products and projects (*tell us what you need*)

LEFT HANDED MODELS AVAILABLE

WEIGHT, POWER REQUIREMENTS, DIMENSIONS

MODEL	WEIGHT (Pounds)	POWER REQUIREMENTS			DIMENSIONS W x H x L
		VOLTS	PHASE	AMPS	
EM16TT/TTK	1050	220	1	60/50	36" x 64" x 114"
EM28TT/TTK	1100	220	1	60/50	36" x 64" x 135"

Packaging - Processing
Bid on Equipment
1-847-683-7720
www.bid-on-equipment.com

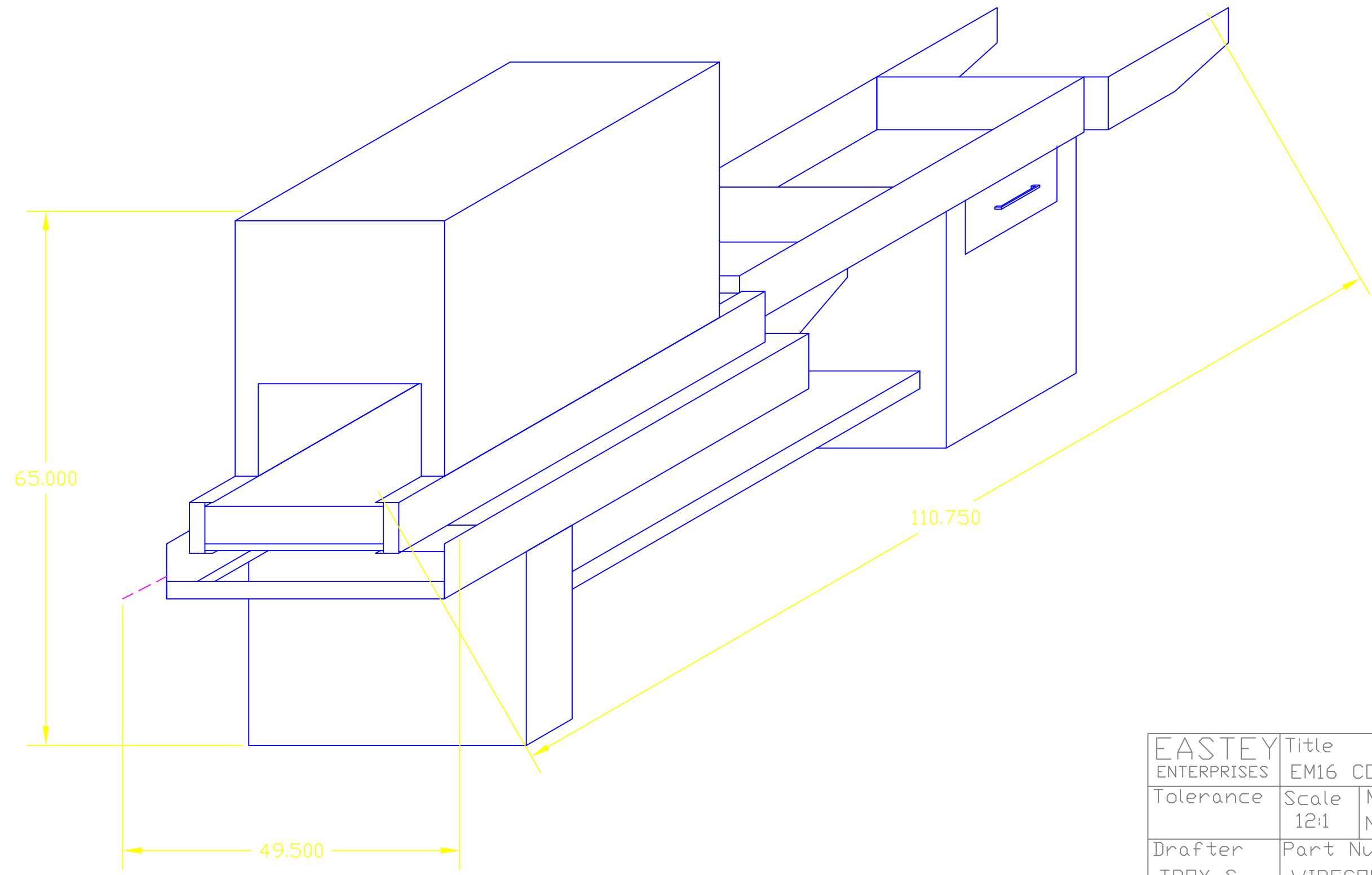
EASTEY ENTERPRISES, INC.

21480 - 147th Ave North, Rogers, MN 55374
Phone: 763/428-4846 Fax: 763/428-8361 Toll Free 800/835-9344
www.eastey.com e-mail - eastey@eastey.com
Copyright © 1999 Eastey Enterprises, Inc., All Rights Reserved

(Rev. 6/07)

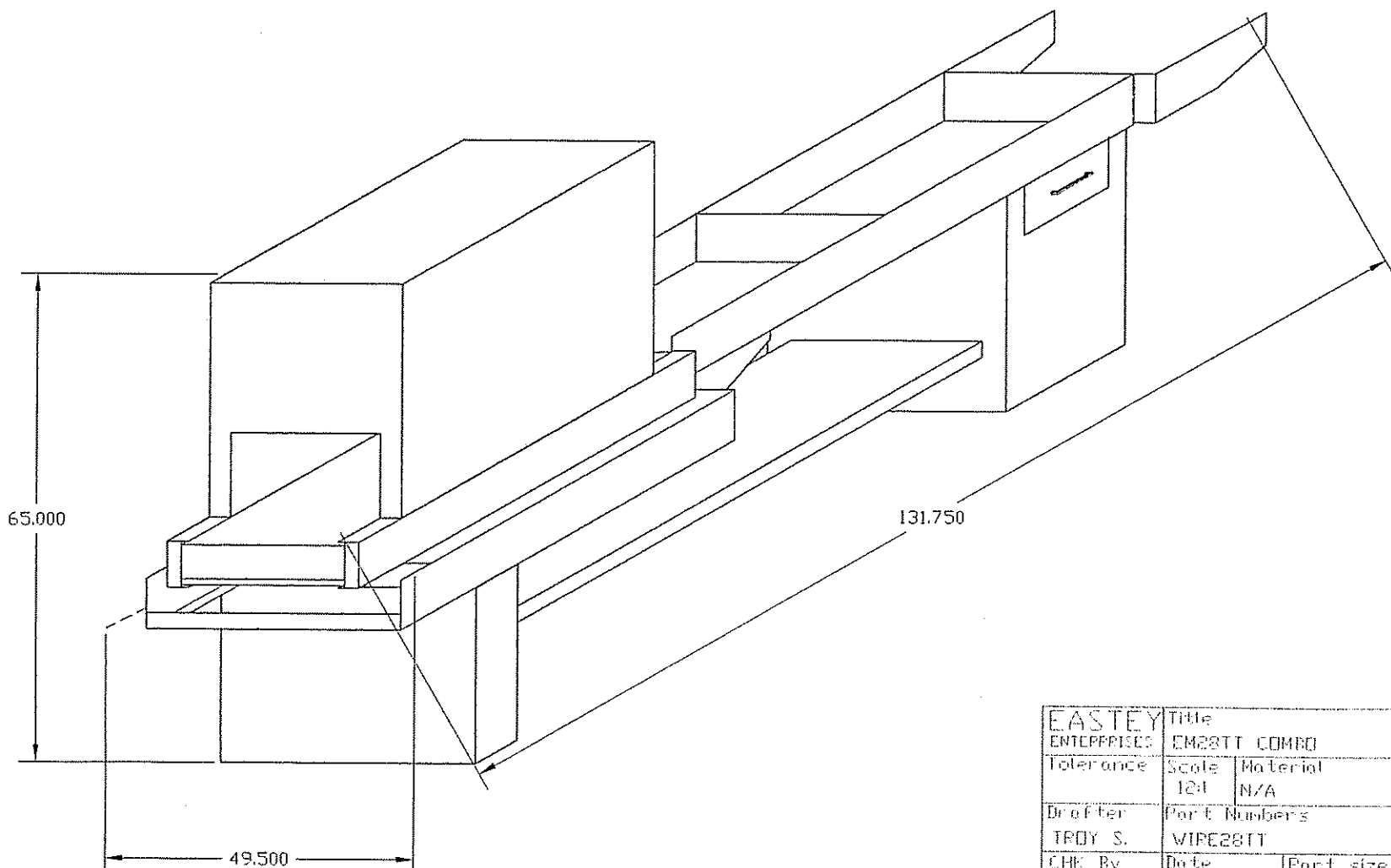
BUILT RIGHT - PRICED RIGHT

REV		DESC.	REVISIONS		DATE	APPRVED



EASTEY ENTERPRISES	Title	EM16 COMBO	
Tolerance	Scale	Material	
	12:1	N/A	
Drafter	Part Numbers		
TROY S.	WIRECOMB		
CHK By	Date	Part size	
	2-15-96	0.000 x 0.000	

REV	DESCRIPTION	REVISIONS	DATE	APPROVED



EASTEY	Title	
ENTERPRISES	EM28TT COMBO	
Tolerance	Scale	Material
	1:1	N/A
Drafter	Part Numbers	
TROY S.	WIPE28TT	
CHK By	Date	Part size
	4-19-02	0.000 x 0.000