

BUILT RIGHT - PRICED RIGHT

EASTEY

Shrink Packaging Equipment for the Shrinking World

EASTEY® AUTOMATIC L SEALER

FOR LARGE AND/OR HEAVY PRODUCTS THAT NEED TO BE FULLY ENCLOSED.

Product is delivered onto the infeed conveyor and is advanced into the centerfold film. It then continues to the seal area, by means of electric eye which sees the front and back of the product. When the product clears the side seal bar both conveyors stop. The self centering seal jaws close, make a seal, and then the seal jaws open to the height set for the product. The outfeed conveyor takes the wrapped product to the tunnel as the infeed conveyor brings a new product into the seal area.



BELT SPEEDS UP TO 75 FEET PER MINUTE.

*Each system is designed to meet the customer's individual needs.
Options will be designed for future requirements - please call.*

Packaging - Processing
Bid on Equipment
1-847-683-7720
www.bid-on-equipment.com

Seal Sizes:

Front Seals: 40", 50", 70", 100"
 Side Seals: 30" - W/50" max film width
 40" - W/50" max film width
 50" - W/60" max film width

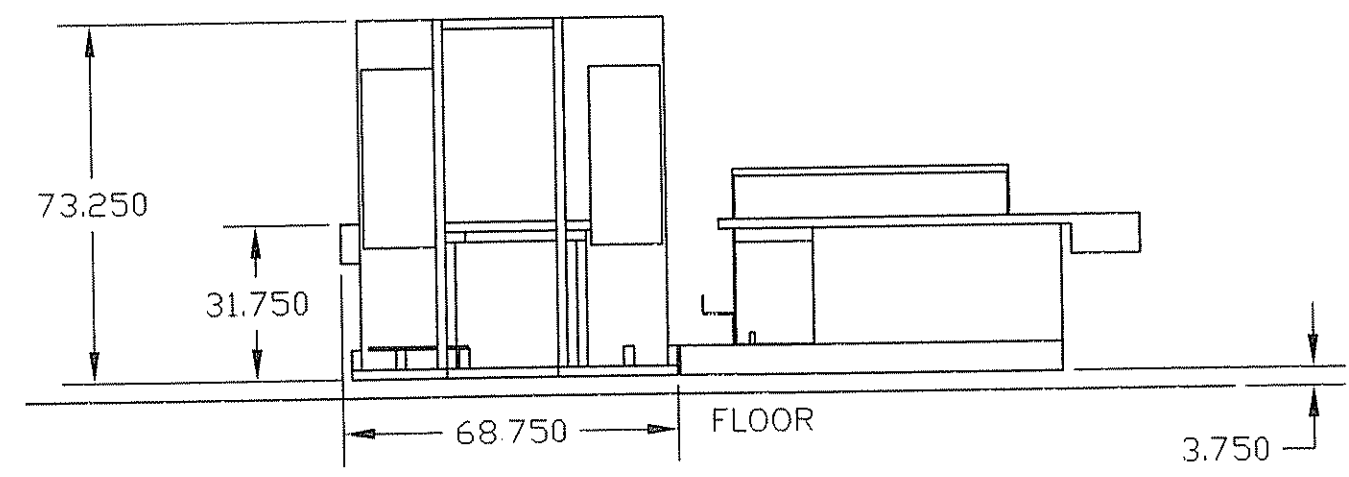
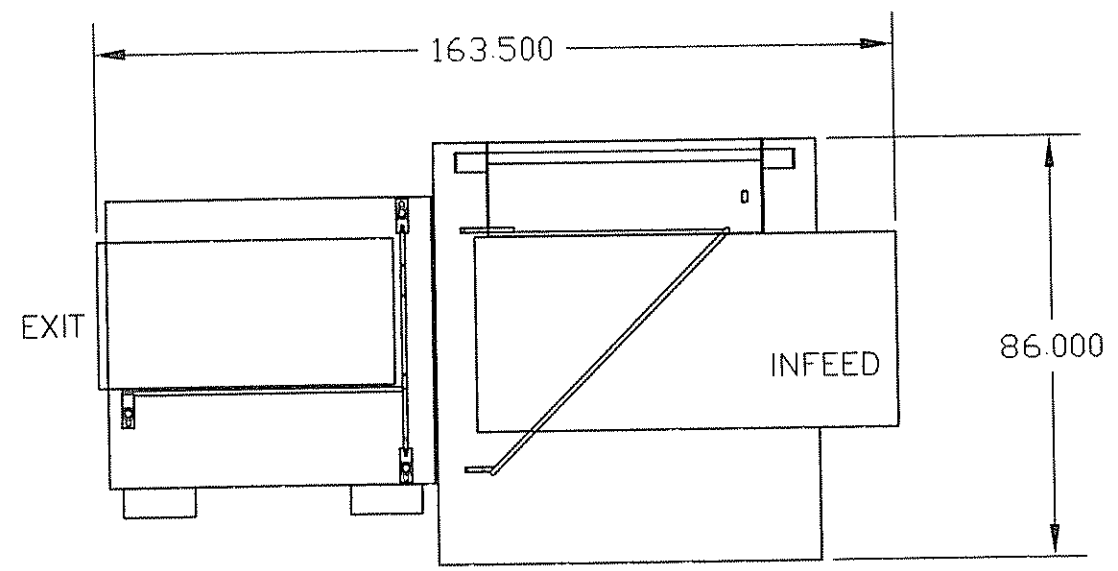
Max film OD 12"

| MODEL | POWER REQUIREMENTS | | |
|-----------|--------------------|-------|------|
| | VOLTS | PHASE | AMPS |
| EA3040TK | 220 | 1 | 25 |
| EA3050TK | 220 | 1 | 30 |
| EA3070TK | 220 | 1 | 35 |
| EA30100TK | 220 | 1 | 35 |
| EA4050TK | 220 | 1 | 30 |
| EA4070TK | 220 | 1 | 35 |
| EA40100TK | 220 | 1 | 35 |
| EA5050TK | 220 | 1 | 30 |
| EA5070TK | 220 | 1 | 35 |
| EA50100TK | 220 | 1 | 35 |

Standard features:

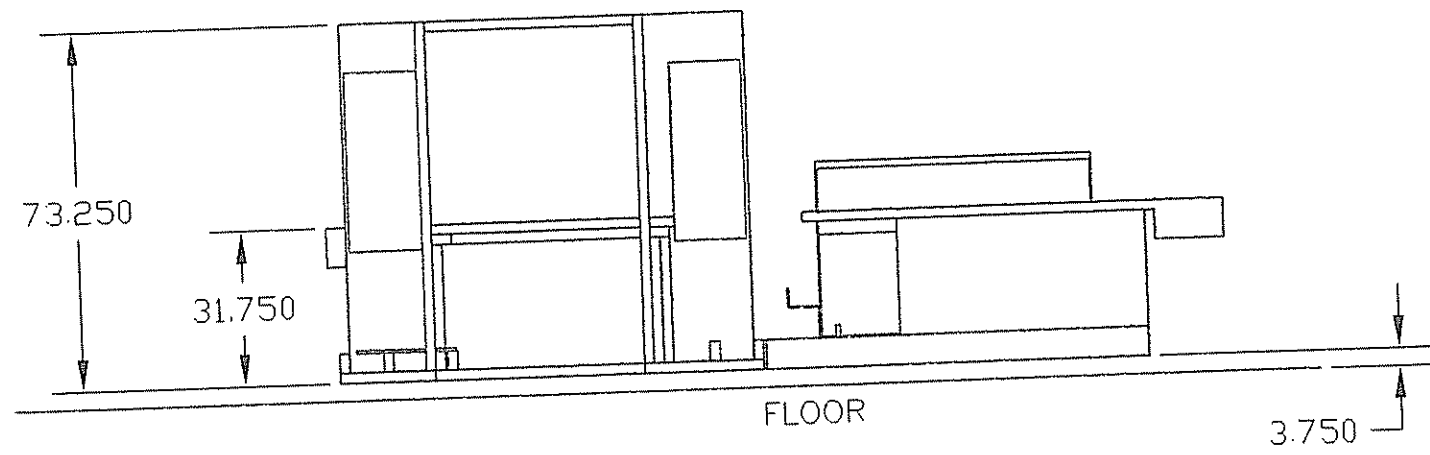
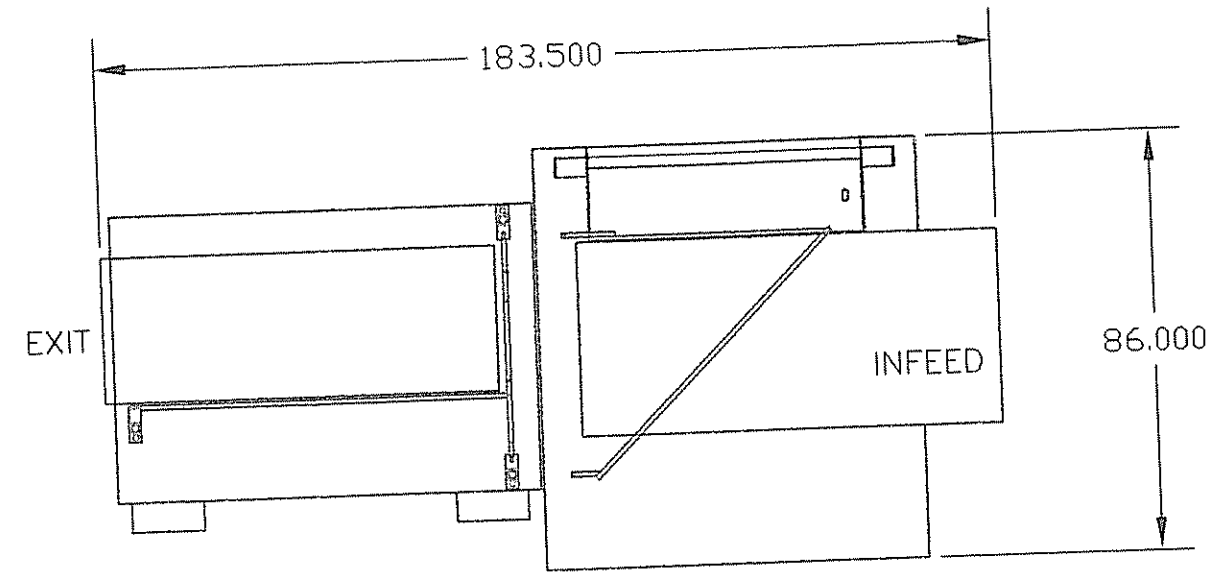
- Hot Knife sealing system (DuoSeal®) with center sealing
- Multi pin perforator wheels for air evacuation
- Film rack - cradle roller style or film cores and shafts
- Film rack side adjustable for perfect alignment of film rack and inverting head
- Power Film Unwind
- Film inverter for inline product feed, with hand wheel for product adjustment
- Film tracking wheels
- Soft start infeed and outfeed conveyors
- Variable speed infeed and outfeed conveyors
- Film take-up scrap winder
- PLC controller
- Levelers and locking casters
- Seal head height - Max 20"
- 3.5 CFM
- 60 PSI

| REV | DESCRIPTION | REVISIONS | DATE | APPROVED |
|-----|-------------|-----------|------|----------|
| | | | | |
| | | | | |
| | | | | |



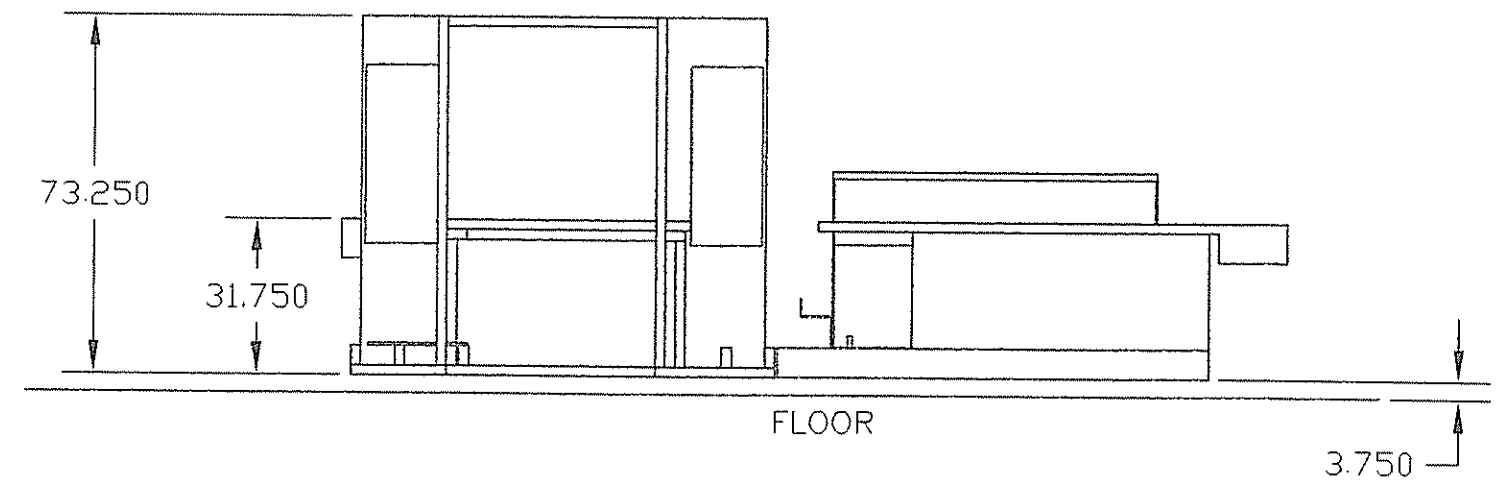
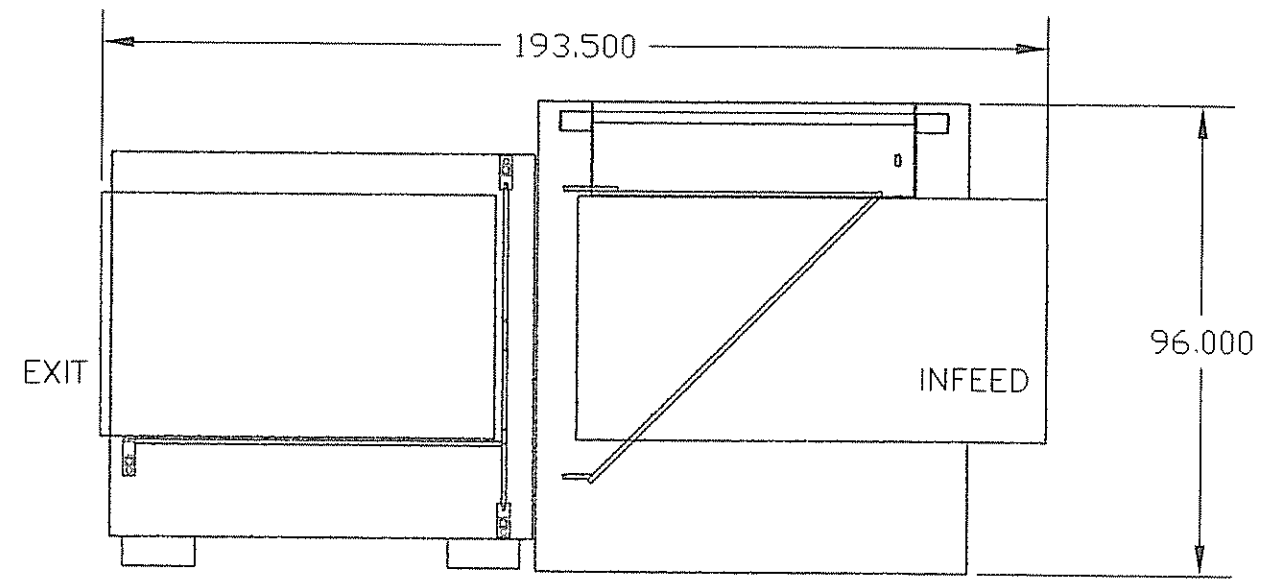
| | | | |
|--|--|------------------------------|----------------------------|
| ALL DIMENSIONS ARE IN INCHES | EASTEY ENTERPRISES | Title AUTO SEALER 30 x 50 | |
| ALL TOLERANCES TO BE ±.01 UNLESS OTHERWISE SPECIFIED | Tolerance ±.010 (UNLESS SPECIFIED) | Scale 1:36 | Material N/A |
| | Drafter TROY S. | Part Numbers EA3050 | |
| FINISH - NONE | CHK By | Date 2-8-08 | Part size 0.000 x 0.000 |

| REV | DESCRIPTION | REVISIONS | DATE | APPROVED |
|-----|-------------|-----------|------|----------|
| | | | | |
| | | | | |
| | | | | |



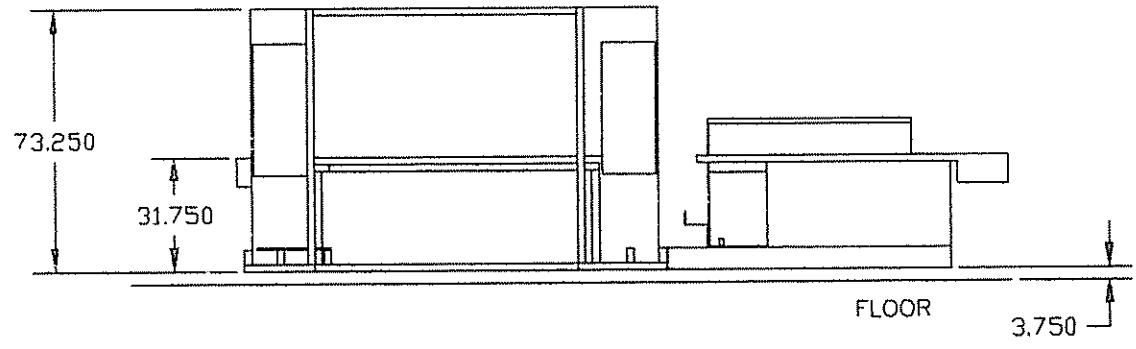
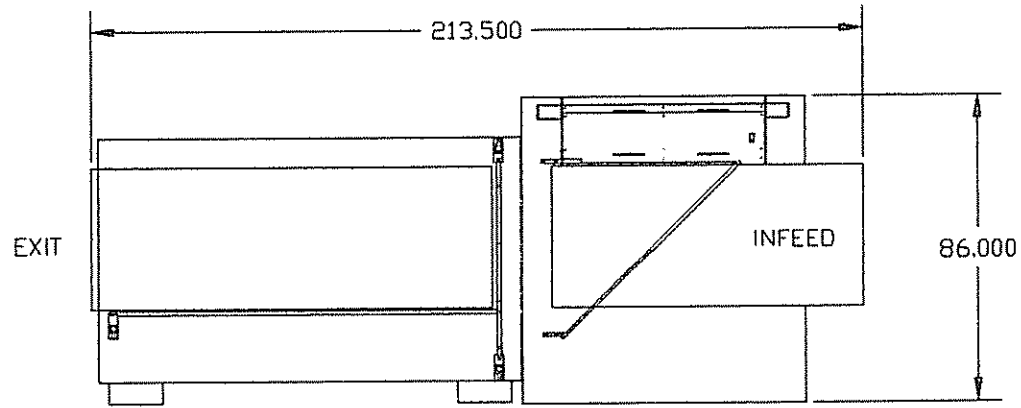
| | | | |
|--|--|------------------------------|----------------------------|
| ALL DIMENSIONS ARE IN INCHES | EASTEY ENTERPRISES | Title AUTO SEALER 30 x 70 | |
| ALL TOLERANCES TO BE ± 01 UNLESS OTHERWISE SPECIFIED | Tolerance ±.010 (UNLESS SPECIFIED) | Scale 1:36 | Material N/A |
| | Drafter TROY S. | Part Numbers EA3070 | |
| FINISH - NONE | CHK By | Date 3-6-07 | Part size 0.000 x 0.000 |

| REV DESCRIPTION | | REVISIONS | |
|-----------------|-------------|-----------|---------|
| REV | DESCRIPTION | DATE | APPRVED |
| | | | |
| | | | |
| | | | |



| | | | |
|--|--|------------------------------|----------------------------|
| ALL DIMENSIONS ARE IN INCHES | EASTEY ENTERPRISES | Title AUTO SEALER 50 x 70 | |
| ALL TOLERANCES TO BE ±.01 UNLESS OTHERWISE SPECIFIED | Tolerance ±.010 (UNLESS SPECIFIED) | Scale 1:36 | Material N/A |
| FINISH - NONE | Drafter TROY S. | Part Numbers EA5070 | |
| | CHK By | Date 7-10-07 | Part size 0.000 x 0.000 |

| REV | DESCRIPTION | DATE |
|-----|-------------|------|
| | | |
| | | |
| | | |



| | | | | |
|------------------------------|--|--|-------------------------------|----------------------------|
| ALL DIMENSIONS ARE IN INCHES | EASTEY ENTERPRISES | | Title AUTO SEALER 40 x 100 | |
| | ALL TOLERANCES TO BE ±.01 UNLESS OTHERWISE SPECIFIED | Tolerance ±.010 (UNLESS SPECIFIED) | Scale 1:36 | Material N/A |
| | | Drafter TROY S. | Part Numbers EA40100 | |
| | FINISH - NONE | CHK By | Date 3-6-07 | Part size 0.000 x 0.000 |