



# Domino G-Series thermal ink jet printers

The modular solution for difficult substrates



Print control flexibility with innovative fluids, enabling simplicity without the cost.

**Domino. Do more.**

## Multi-purpose coding made easier

Domino brings its 30 years of printer experience and fluids technology together to simplify Thermal Ink Jet (TIJ) installation and operation.

Our specially formulated range of water based and ethanol inks are tried and tested in the most challenging environments on the most popular substrates, utilising industry-standard thermal ink jet cartridges.

Whether your line is simple or complex, the G-Series range has the capability to integrate easily, with up to four print heads managed by a single controller.

## A diverse range of applications



High contrast and excellent adhesion to provide high quality codes for use in many applications.



Industry standard code formats, can be applied using combinations of alphanumeric text, 2D data matrix codes for enhanced traceability.



Alphanumeric text, logos can be applied permanently to some of the most challenging substrates with ease.



High quality multiple codes can be applied to a wide variety of substrates if required.



## Greener credentials

Domino's commitment and investment in sound environmental practices means we frequently exceed the demanding governmental, industry and company standards and regulations. We are committed to minimising the consumption of natural resources and energy and the creation of waste. Additionally, our products are RoHS and WEEE compliant so that they are recyclable.

## Low running costs – low cost per print

### Efficient

No other TIIJ printing solution offers the functionality of Domino's unique fluid formulations in a convenient changeable print cartridge. It's clean, efficient, reliable, and service free.



### Predictable

Once the code is loaded into the controller, whether it is a logo, alphanumeric text, barcode or 2D data matrix code, the total number of prints possible per cartridge can be displayed on the user interface, allowing an accurate prediction of cost.



## High resolution, high speed printing

The G-Series can print high definition (up to 600dpi) machine readable codes for enhanced traceability.

Ideally suited to industrial environments, it is able to print at high quality in demanding applications, and at high production line speeds.



## Inks developed to match your substrates

### Optimised

Domino has developed a portfolio of water and ethanol based inks, which provide broad suitability to match your diverse substrate. High performance inks and print head drivers are optimised to produce high jetting quality, and large numbers of prints per cartridge.



### Versatile

Our experience in industrial inks has made our G-Series printers the perfect choice for a wide range of packaging materials, including porous and non-porous substrates.

### High performance

The range of inks and the print performance make it well suited to fast flow wrapping food lines, or multi-substrate pharmaceutical and healthcare packaging.



## Versatile configuration to meet more applications

### Scalable solutions

The G-Series is a very modular system which can be configured in a variety of ways to grow with your production demands. The controller has the power to manage up to four print heads in many different configurations – making integration easier and very cost effective.

Select from a single head configuration for simple applications, to a four head set-up printing on four production lines with multiple messages for the most complex production applications.

Each head can print up to four lines of text, bar codes, 2D codes and logos – with multiple head configurations being able to handle large and complex graphics.

### Networking capability

The controller, with its management software, is common to all the G-Series range and can be networked via Ethernet.



## Easy to use with virtually no maintenance

### Easy to install

G-Series is extremely easy and quick to install, integrate and configure into any production environment.

### Clean

Cartridge changes are simple, quick and clean. The G-Series is the ideal solution for pharmaceutical, healthcare and food applications.



### Simple to use

Programming, set up and production operation can be controlled via the built-in user interface and messages can be edited while the printer is running to minimise production downtime.



**Domino. Do more.**

## A quick tour around G-Series

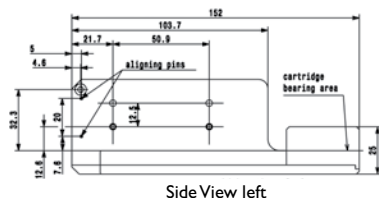
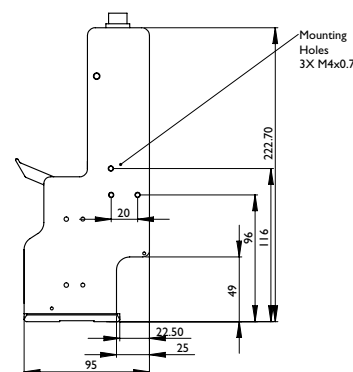
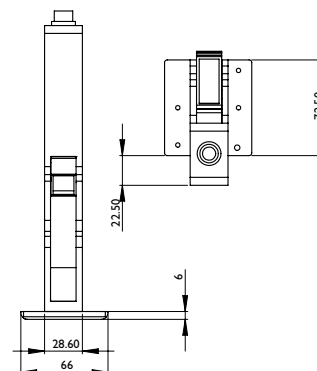
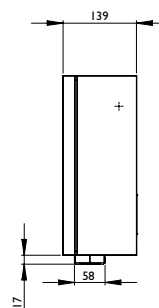
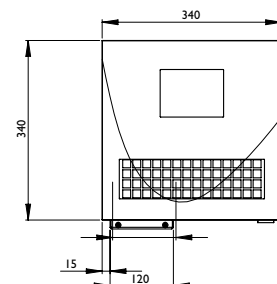


**Domino. Do more.**

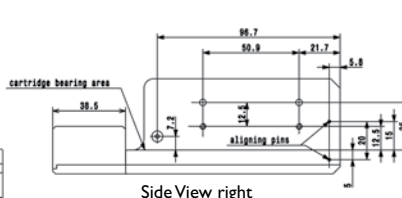
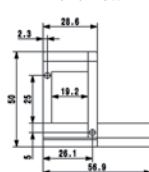
## Technical Specification:

| CONTROL UNITS  | G100   | G200                      | G300                      |
|--|--|---------------------------|---------------------------|
| <b>PRINT HEADS</b>   |  |                           |                           |
| Number of printheads per controller                                    | 2  | 4                         | 4                         |
| Number of print groups   | 2  | 2                         | 4                         |
| Print speed  | 300m/min (984 ft/min) dpi dependent or 60 m/min @ 300dpi |                           |                           |
| Maximum print height   | 25.4 mm / 1" (2 x 12.7mm)                                | 50.8 mm (2") (4 x 12.7mm) | 50.8 mm (2") (4 x 12.7mm) |
| Graphics   |  | •                         | •                         |
| Bar codes (EAN 8, UPC-A, UPC-E, EAN13, Code39, EAN128, Code128, ITF14) |  | •                         | •                         |
| 2D Bar codes (Datamatrix, GSI-128)                                     |  | •                         | •                         |
| Fonts  | Arial/Courier only                                       | Unlimited                 | Unlimited                 |
| <b>DIMENSIONS – CONTROLLER</b>   |  |                           |                           |
| Length   | 340mm (13.38")   |                           |                           |
| Width  | 340mm (13.38")   |                           |                           |
| Depth  | 139mm (5.47")  |                           |                           |
| Weight   | 10 kg, 22 lbs  |                           |                           |
| <b>PRINthead</b>   |  | <b>STANDARD</b>           | <b>LOW PROFILE</b>        |
| Length   | 222mm (8.74")  | 152mm (5.98")             |                           |
| Width  | 95mm (3.74")   | 56.9mm (2.24")            |                           |
| Depth  | 28.6/66mm (1.13/2.6")                                    | 50mm (1.97")              |                           |
| Conduit length   | 5, 10, 25m available                                     | 5M, 10M, 25M available    |                           |
| <b>INKS</b>  |  | Water, Solvent Based      |                           |
| <b>RANGE SPECIFICATIONS</b>  |  |                           |                           |
| Construction   | Powdered coated steel                                    |                           |                           |
| User Interface   | Graphical LCD  |                           |                           |
| Voltage  | 90 – 264 VAC   |                           |                           |
| Electrical Requirements  | Frequency 47 – 440 Hz<br>Power 80VA                      |                           |                           |
| Features   | Ethernet Capable, RS232, Alarm output, CAN bus, BCD      |                           |                           |
| IP Rating  | 54   |                           |                           |

All dimensions in mm (inches)



Front View



Print sample



ABC

ABC  
ABC

ABC

Use by 11-2014  
Use by 11-2014  
Use by 11-2014



GIP:34000102349987  
Lot:100200BC1F  
Exp:01.31.12  
MFD:28.11.2018