

The Domino A400

Domino reliability and quality in a compact design for stackable options



Key Benefits:

Reliability Comes as Standard

- Consistent high quality codes, requiring minimal operator intervention
- Reliable start-up, even after uncontrolled shut down

Unique Self-Cleaning Ink System

- Large internal reservoir and nozzle seal ensures truly automatic print head cleaning

SureStart

- On-button controls the complete start-up and shut down process

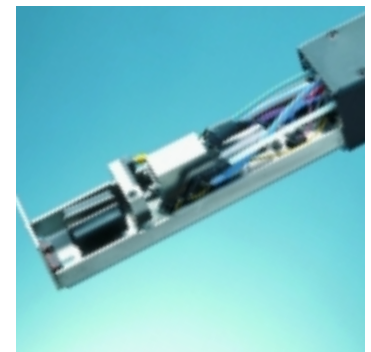
Main Features:

- Rugged Cabinet Design
304 grade stainless steel, rated IP53
Dust and splash proof
- Flexible Applications
Up to 4 lines in a variety of print formats
- Domino Inks
Range of Advanced, Specialist and Custom inks for all application requirements



Additional Options:

- Pinpoint™
High speed, high definition micro printing, as small as 0.8mm in height, without compromising quality or clarity
- FreeForm™
High definition free-flowing, curved characters, giving codes a "close-up" quality
- Egg Coder
Compliant with FDA and EU legislation, the Egg Coder application prints up to three lines of mixed text and logos at production capacity speed
- XS
Coding up to 30% faster than regular A400 coding, the XS retains reliability whilst meeting the demands of high-speed industries



A-Series print head



Unique Domino ink system

Technical Specification

Dimensions Show Door Open

Control Unit

Control Panel: Membrane touch button
Cabinet: Stainless Steel (304) designed to IP53
 (BS EN 60529:1992)

Cabinet dimensions: 560mm x 450mm x 375mm (22" x 17.7" x 14.8")
Weight: 33kg (72.4lbs)

Character Control

- Auto repeat
- Auto invert/reverse
- User defined clock format
- Sequential/batch numbering
- Inverse reverse and bold characters
- Character width and height adjustment
- Print delay
- Product counter
- Barcodes
- Message repeat

Data Input Options

- Serial RS232
- Ethernet, RJ45 Connector
- Rate: 110-38.4k Baud, software configurable

Ink System

Viscosity control: Automatic
Ink bleed control: Automatic on start up
Ink and make-up refill: 825ml (.87qt) cartridge automatically metered
Peltier: Optional

Print head

Dimensions: 240mm x 41mm x 47mm 8.47" x 1.62" x 1.85"
Conduit length: 3m (11'8) or 6m (23'6)
Positive air: Optional internal supply.
Airdryer: Internal compressor or factory air options

Environment

Temperature range: 5 – 45°C (40 – 112°F) operating
Humidity: 10 – 90% (non-condensing)
Electrical requirements: Single phase, fully auto-ranging
 90 – 132V/180 – 264V, 50/60Hz 200VA

Standard Connections

Product detector: 12V 100mA for photocell or proximity detector. IP68 6 way socket
Shaft encoder input: Open collector or TTL encoder
 12V via IP68 6 way socket

Options

Alarm beacon connector: IP68 7 way socket
Auxiliary alarms connector: IP68 9 way plug
User port connector: IP68 25 way socket

Accessories

Full range of photocells, stands and bracketry

Australia

Domino (Australia) Pty. Ltd.
 Unit 12
 6 Gladstone Road
 Castle Hill
 Sydney
 NSW 2154
 Tel: + 61 2 9894 7833

Canada

Domino Printing
 Solutions Inc.
 2751 Coventry Road
 Oakville
 Ontario
 L6H 5V9
 Tel: + 1 800 387 7972

India

Domino Printech India
 Private Limited
 167, Udyog Vihar Phase I,
 H.S.I.D.C Gurgaon -
 122016 Haryana
 Tel: + 91 124 500 7406

United Arab Emirates

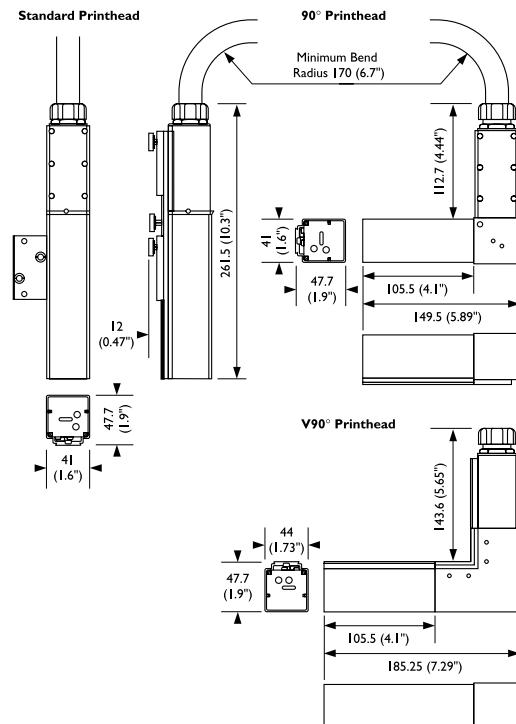
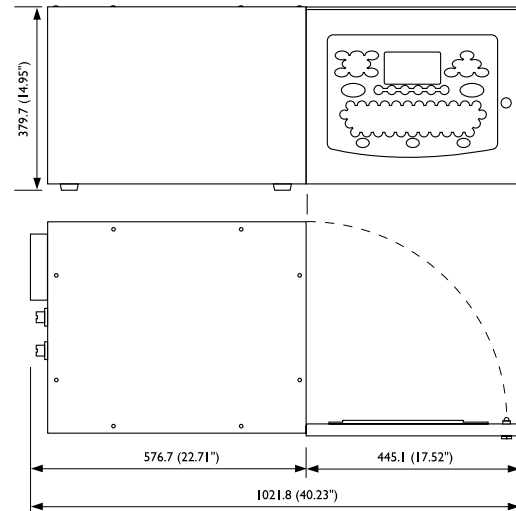
Domino UK Ltd (Dubai)
 PO Box 16984
 Jebel Ali Dubai
 Tel: + 971 4 88 35003

United Kingdom

Domino UK Ltd
 Bar Hill
 Cambridge
 CB3 8TU
 Tel: + 44 1954 782 551

United States of America

Domino Amjet. Inc.
 1290 Lakeside Drive
 Gurnee
 Illinois 60031
 Tel: + 1 800 486 7351



www.domino-printing.com

