

## Machine Features

**Dosing:**  
From a vertical hopper into piston which doses the product into the pre-formed wrapping shells in the 8 station indexing table.

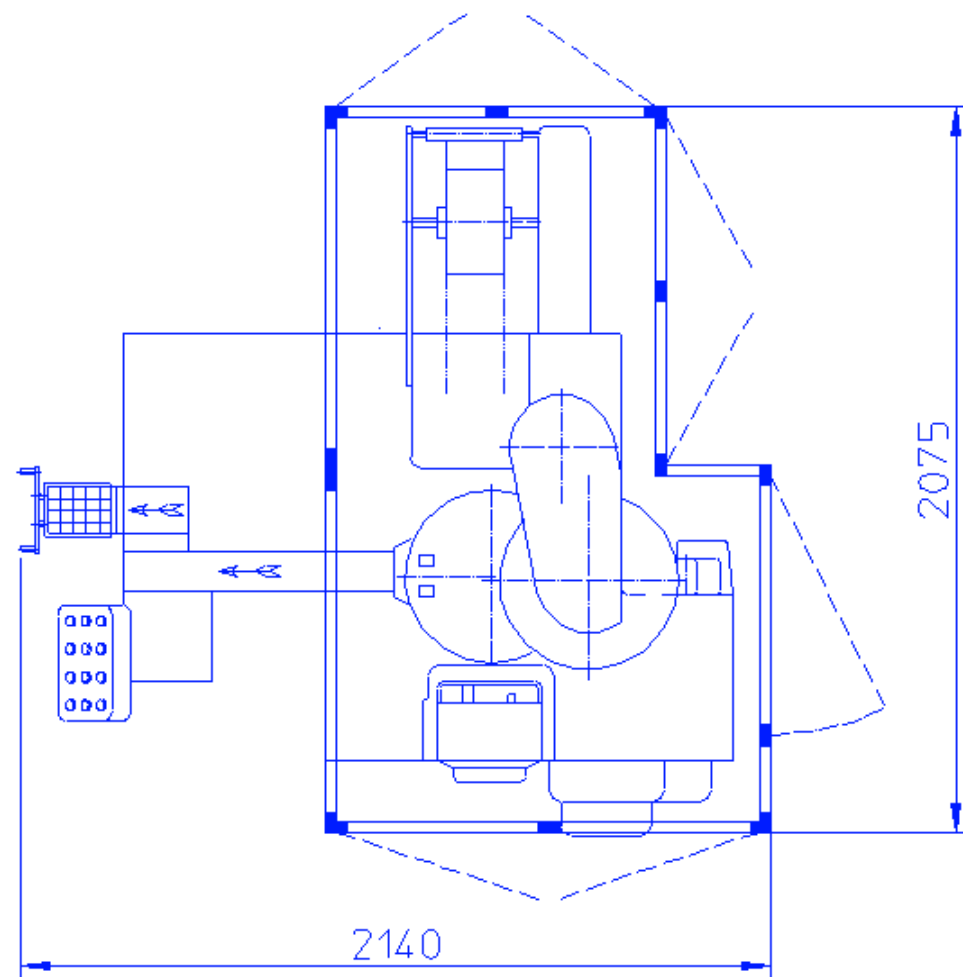
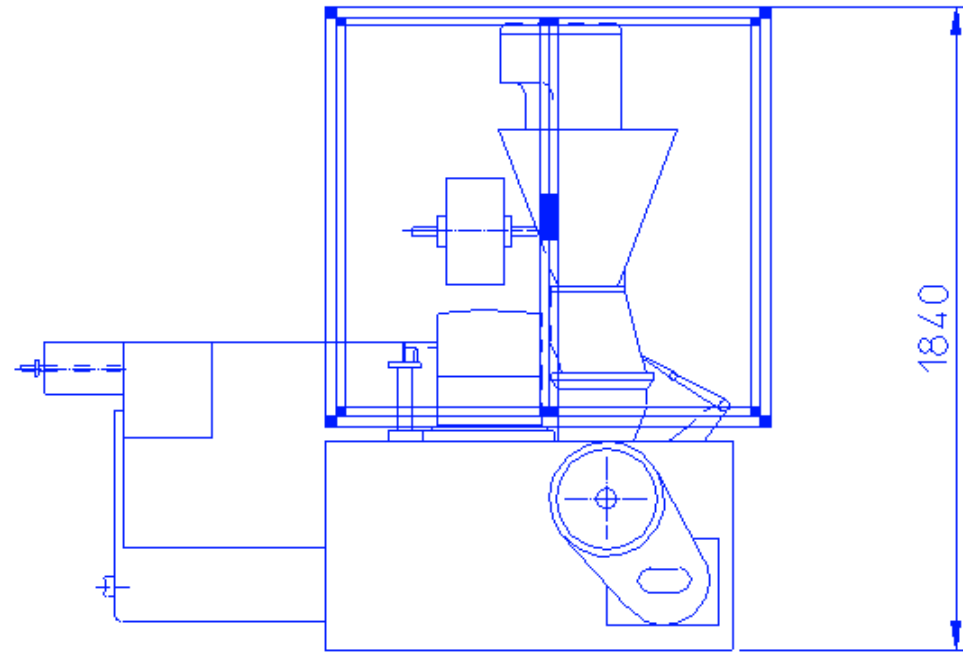
**Wrapping:**  
'Portfolio' style.

**Wrapping Material:**  
Roll-fed laminated alufoil.

**Service:**  
One operator each machine.

**Grouping Unit:**  
Found at the outlet section, it fully automatically groups and arranges the portions into the required number of layers (p.e. 100 portions into the 5 x 4 x 5 layer configuration or other size to be confirmed).  
The formed bundle is carried onto a suitable turning hopper where a pre-erected box is fed over by the operator and filled by swinging 180° degrees the turning hopper.

**FB220 Dimensions**



**Machine Data**

- Portion Weight 7 ÷ 25 g
- Portions for minute 260 ÷ 280 p/min
- Installed Power 3 kW
- Compressed Air 100 NI/min
- Min. Operating Pressure 6 bar
- Vacuum 10 m3/h
- Operating Vacuum 600±50 mm Hg
- Weight 2700 kg
- Temperature -20 ÷ +50°C
- Relative humidity < 95% (no condensate)



# FB220

## Product outfeed

Portion Dimensions (mm)			Sheet Foil Dimensions (mm)	
A	B	C	M	N
20 Min.-30 Max.	20 Min.-50 Max.	6 Min.-25 Max.	65 Min.-90 Max.	160 Min-220 Max.

