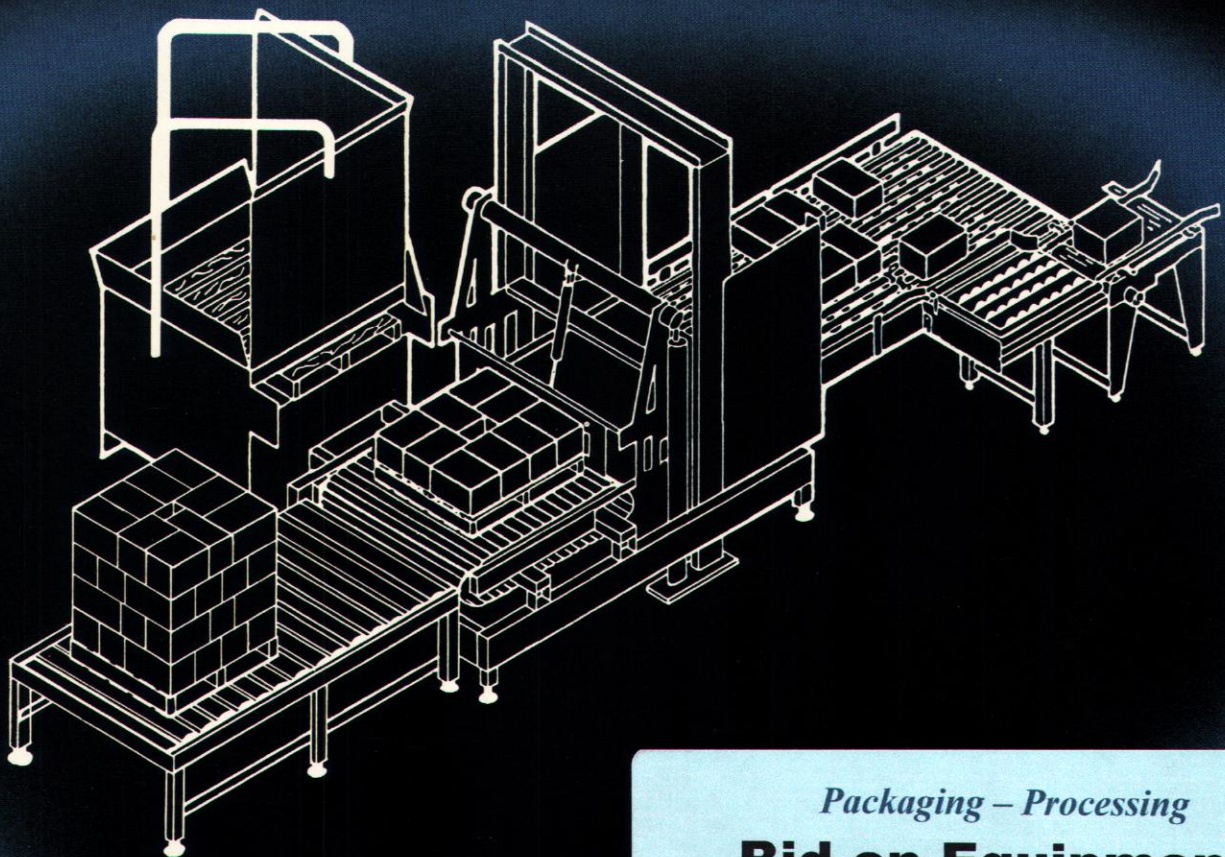


COLMAC
500

CASE PALLETIZER



Packaging – Processing

Bid on Equipment

1-847-683-7720

www.bid-on-equipment.com

**BENEFITS: Less floor space required – no mezzanine.
Longer machine life – elevator lifts only 1 layer.**

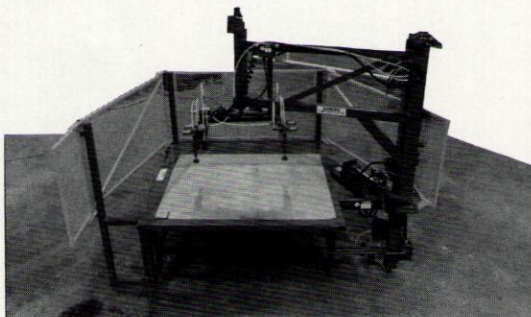
**Packaging - Processing
Bid on Equipment**

1-847-683-7720

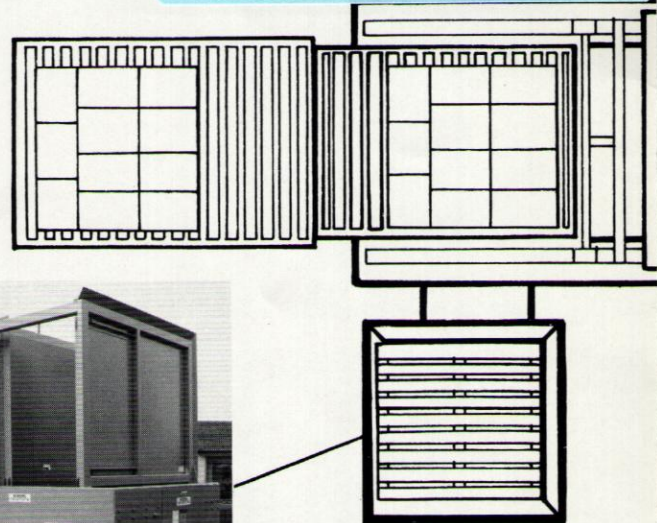
www.bid-on-equipment.com

OPTIONAL EQUIPMENT

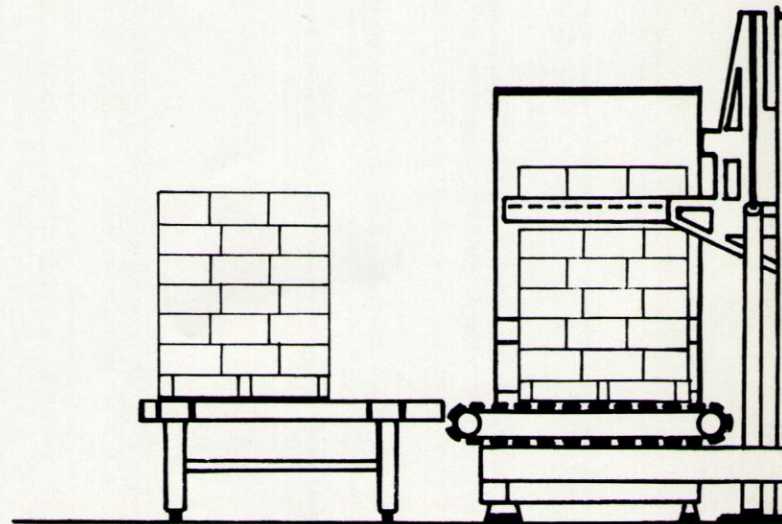
1. Slip sheet and tie sheet feeders.
2. Wide range of programmable controllers.
3. Single message or full color graphic diagnostics.
4. Automatic and manual lubrication systems.
5. Infeed conveyors and automatic conveyor controls.
6. Discharge conveyors and interface controls to stretch wrapper, A.G.V., etc.
7. Extra wide and long load capacity.
8. Modular add-on sections available to increase speed or change configuration.
9. Inventory control and report generation.
10. String tying or strapping is integrated into the machine.



Automatic slip or pul-pak sheet feeder. Tie sheet feeders also available.



Automatic pallet dispenser. Factory set from 30" x 30" to 48" x 48". Capacity approximately 12 pallets.



BENEFITS: JIC standard fittings, valves, motors, cylinders throughout. Quality product and service.

BENEFITS: Easy maintenance at floor level. Modular design. Can be upgraded to meet future needs.

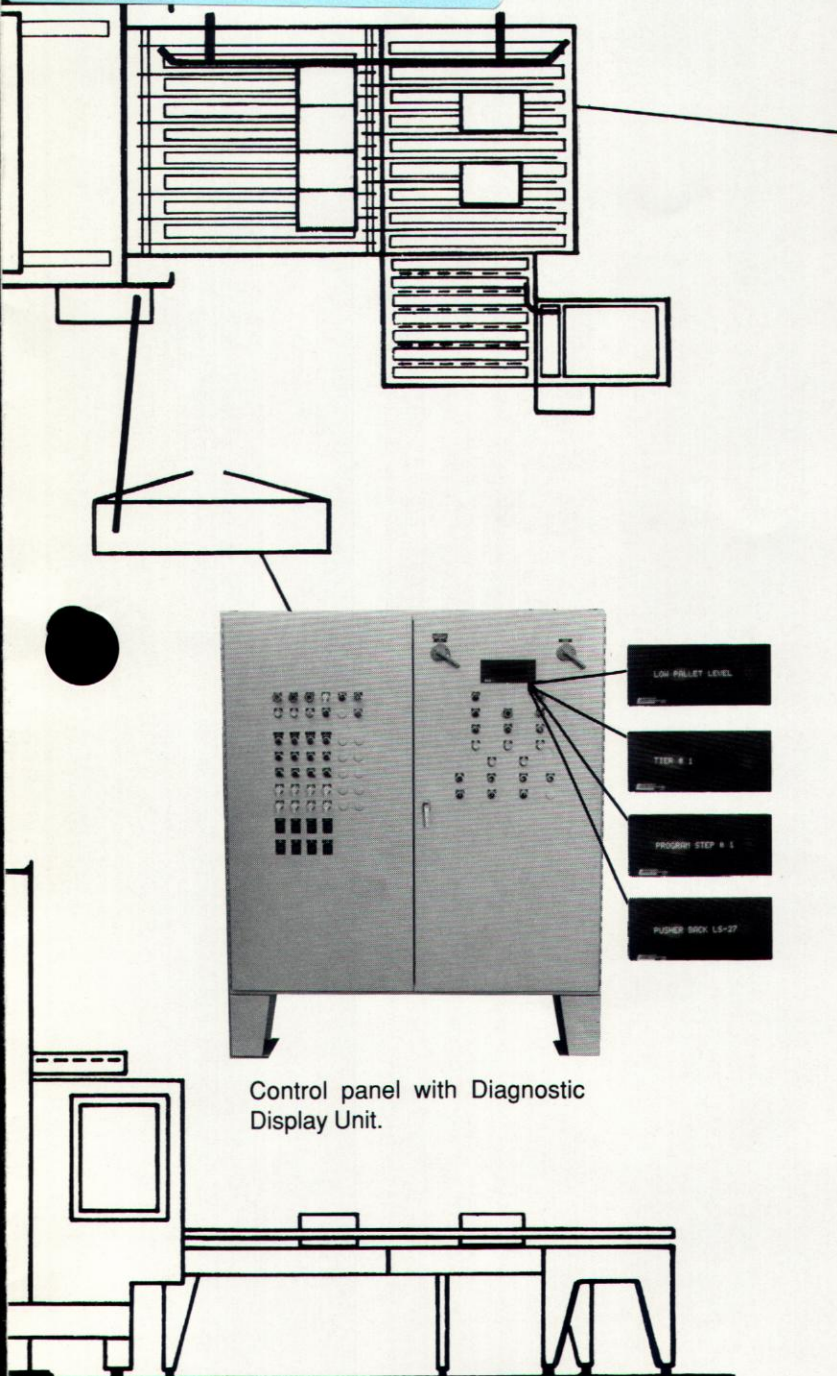
**Packaging - Processing
Bid on Equipment**

1-847-683-7720

www.bid-on-equipment.com



Heavy-duty dual chain arranging conveyor utilizes two drives, 60 pitch chains, 1/2" plate frame and accumulates one layer prior to the elevator.



SERVICES

1. Complete material handling services available for full systems with turnkey responsibility.
2. Videos of all machines are available.
3. Operator training seminars.
4. Custom designed equipment to your specifications.

NOTE: PALLETIZER GUARDING NOT SHOWN IN ILLUSTRATIONS IN ORDER TO PERMIT CLEARER VIEW OF EQUIPMENT.

BENEFITS: Can form pattern gaps in all 4 directions. Heavy duty construction. Safe operation at floor level.

COLMAC 500 CASE PALLETIZER

SPECIFICATIONS

CAPACITY. Cases up to 24"L x 18"W x 18"H; Standard loads up to 50"L x 50"W x 64"H (including pallet) plus one tier.
Weights: 800 lbs per tier; 6,000 lbs. per load.

SPEED. 35 to 45 cases per minute, depending on pattern, product and number of cases per load.

AIR. 12 SCFM at 80 PSIG is required for operation. The air is controlled by solenoid actuated air valves. All air cylinders are heavy-duty, rated for high speed industrial application.

ELECTRICAL. 230/460 volts, 3 phase 60 cycle power circuit. Control panel includes main circuit breaker disconnect. Transformer in panel supplies 115 volt control circuits.

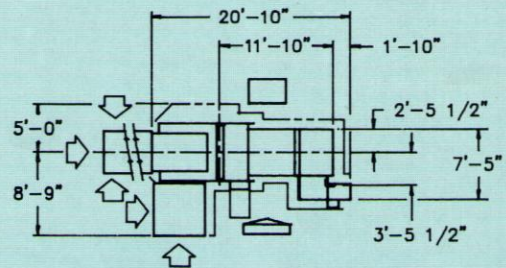
CONTROLS. TI-525 solid state sequencer standard.

HYDRAULIC SYSTEM. Low-pressure hydraulic pump. All port fittings are leak proof SAE straight thread O-ring type. Solenoid operated hydraulic valves are manifold mounted. Cylinders are cushioned, heavy-duty type. Hydraulic valves, pump and cylinders have standard NFPA mountings.

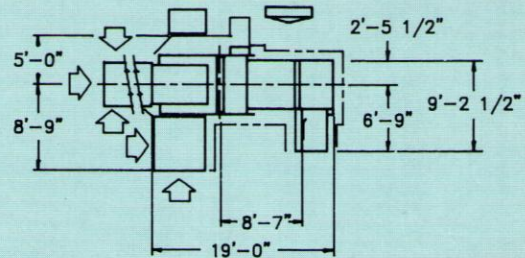
PALLET DISPENSER. Automatic fixed size pallet ejector. May be factory set from 30" x 30" to 48" x 48". Hopper stores approximately 12 pallets.

MACHINE LAYOUTS

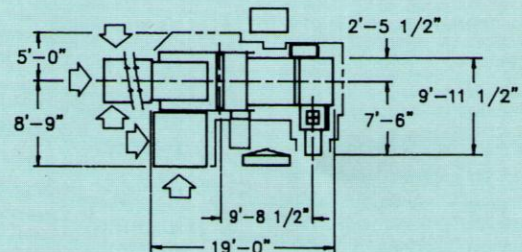
500X
Rear
Infeed



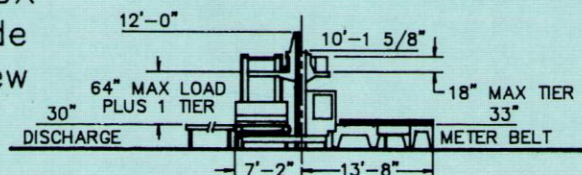
500S
Side
Infeed



500T
Side
Infeed



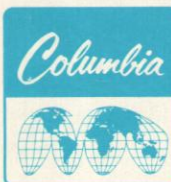
500X
Side
View



NOTE: Pallet Ejector shown on opposite side for clarity.

ADDITIONAL LAYOUTS AVAILABLE

COLUMBIA MACHINE, INC.



107 Grand Boulevard
Vancouver, WA 98661
Phone: (206) 694-1501
Cable: "COLMAC"
Telex: (230) 152 833
FAX: (206) 695-7517

Palletizer systems for cases, pails, bags, bundles, drums or bales.

Packaging - Processing
Bid on Equipment

1-847-683-7720

www.bid-on-equipment.com