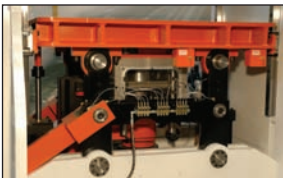




CS-Series Thermoformers



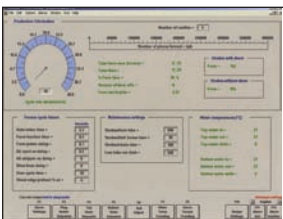
Photo shown may include optional items



3rd Platen Motion



Deep Draw Clamshell



Lookout Control Package

Worldwide Leader in Thermoforming Solutions

Brown Machine offers a complete range of servo driven thermoformers offering exceptional productivity, consistent performance and rugged durability. Independent acting servo-controlled top and bottom platens are guided on linear bearings, coupled with a rugged mechanical linkage utilizing needle bearings provide a smooth, precise and repeatable motion of the form station. The addition of independent servo plug assist motion allows for almost infinite timing scenarios. With various oven heater and control capabilities and equipped with an array of standard options, these formers can produce virtually any in-line thermoformable product out of virtually any thermoformable material. When interfaced with Brown Trim Presses, Lip Rollers, Product Handlers, Tooling and process services, we provide a complete product / process solution.

Safety Features

- Guards. Designed to provide high visibility and easy access for operator safety.
- Interlocks. Electrical interlocks are standard on moving guards or areas requiring frequent access.
- Safety Tags. Bilingual with pictographic tags are standard.
- Main Electrical Disconnect with padlock.
- Stop Buttons. Large red palm stop buttons are standard. When depressed, they lock in the off position and must be pulled up and rotated back into a reset position.

- All safety features should be in place and functional at all times.

CS-Series Options

- Servo Plug Assist
- Mechanical Clamp Frame Actuation
- Quick Tool Change Package
- Plug Heater
- Positive Platen Stops
- Six Point Platen Guiding
- Servo Valve Package
- Deep Draw Capabilities
- Vacuum Pulse Process
- Oven Sheet Support
- Oven Layouts and Zoning
- Sheet Edge Pre-Heaters
- Clam Shell Oven
- Motorized Rails
- Increased Torque Index System
- Pneumatic Chain Tensioners
- Circuit Breakers
- Extruder Synchronization Eye
- Air conditioned electrical cabinets
- Roll Lift for Unwind Stand
- Vacuum Pumps and Temperature Control Units
- UL / CE / CSA / HSE Approval Available
- International Voltages Available
- Spare Parts Kits
- Start-Up and Training
- Custom Options

CS-Series Thermoformers

Specifications	Model CS-2100	Model CS-3036	Model CS-4500	Model CS-5500
Maximum Mold Size	25" wide x 26" long (635mm x 660mm)	30" wide x 36" long (762mm x 914mm)	40" wide x 42" long (1016mm x 1067mm)	50" wide x 50" long (1270mm x 1270mm)
Maximum Depth of Draw	6" (152mm) / 10"(254 mm)	6" (152mm) / 10"(254 mm)	7" (178mm) / 10"(254 mm)	7" (178mm) / 10"(254 mm)
Maximum Forming Pressure	100 psi			
Platen / Index Drives	3 axis servo drive			
Independent Servo Plug Assist Option	1 axis servo drive			
Oven	Four (4) stops or five (5) stops top and bottom			
Oven / Control Options	Multiple heater types / oven configurations, including custom options available			
Vacuum Pump	63 cfm / 112 cfm	63 cfm / 112 cfm	112 cfm / 180 cfm	112 cfm / 180 cfm
Power Unwind	Two (2) 48" (1219mm) dia. rolls			
Air Consumption	.30 scf	.50 scf	.75 scf	2.10 scf
Average Operational KVA	120 kva	180 kva	240 kva	288 kva
Lubrication	Automatic			
Sequential Cycle Control	Brown TCS System/PLC			



Larger mold sizes also available through our Quad Series Thermoformers (refer to our Quad Series spec sheet)

Model CS-5454	Model CS-6464	Model CS-7474
54" wide x 54" long (1372mm x 1372mm)	64" wide x 64" long (1626mm x 1626mm)	74" wide x 74" long (1880mm x 1880mm)
Custom sizes available upon request.		

Leadership Through Innovation, Quality and Service

Serving the thermoforming industry since 1952, Brown Machine has earned a reputation for providing the most innovative, durable and dependable plastics equipment in the industry. With engineering and manufacturing capabilities in Beaverton, Michigan, Brown provides equipment, tooling and services to produce a wide range of thermoformed products in the following markets:

- Disposable Cup
- Food Packaging
- Housing
- Point-of-Purchase Packaging
- Material Handling
- Horticultural
- Automotive
- Lid and Plate
- Recreational Equipment
- Appliance

Today our equipment is producing products from a wide range of materials including:

- Polystyrene
- Polyethylene
- PVC
- Composites
- Polypropylene
- EPS Foam
- TPO
- Acrylic
- APET
- ABS
- Barrier Materials

Globally, Brown Machine totally supports its growing capital equipment business with a full complement of:

- Retrofit Kits
- Service: 24-7
- Remanufacturing
- Parts: 24-7

Continuous Thermoformers Cut Sheet Thermoformers Horizontal & Vertical Trim Presses Lip Rolling Systems Machines for Custom Applications Tooling, Parts & Service



	Global Leader in Thermoforming Solutions	World Headquarters: Brown Machine LLC, 330 N. Ross St. Beaverton, Michigan 48612, USA		
		Ph: 989.435.7741	sales@brown-machine.com	www.brown-machine.com
		TF: 877.702.4142	A global leader of thermoforming technologies since 1952, Brown Machine LLC engineers and builds a complete standard line of continuous & cut-sheet thermoforming equipment as well as related tooling & peripheral equipment.	
		Fx: 989.435.2821		