

# BD

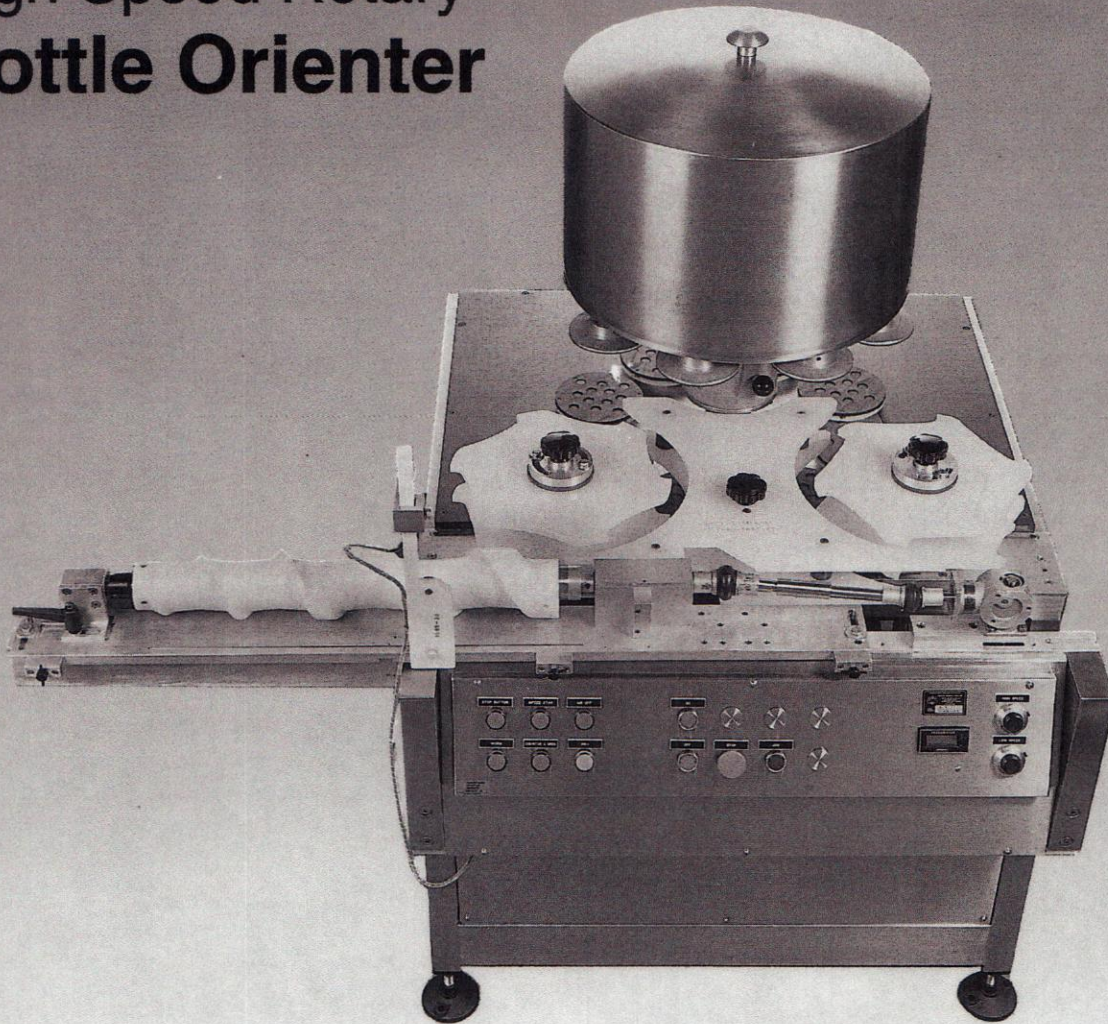
## Bottling Development

Packaging - Processing  
Bid on Equipment

1-847-683-7720

www.bid-on-equipment.com

### High Speed Rotary Bottle Orienter



#### Fast

- Testing speeds to 600 containers per minute, choose from two models
- Quick changeover of change parts

#### Versatile

- Glass or plastic containers of almost any size or shape
- 90°, 180°, 270° bottle orientation capabilities
- Appropriate sensing system to suit container
- Programmable PLC controls with brand name of your choice

#### Easy to operate

- Automatic speed controls with finger tip settings
- Digital speed read-out in containers per minute

#### Easy to maintain

- Stainless steel and aluminum construction

**A GOOD TURN FOR YOUR BOTTLES THAT NEED IT!**

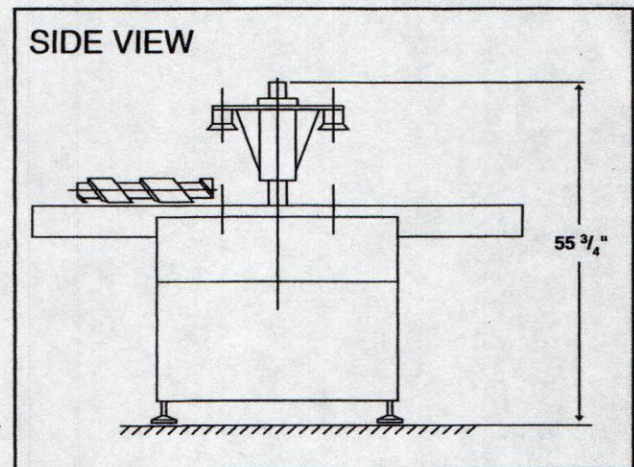
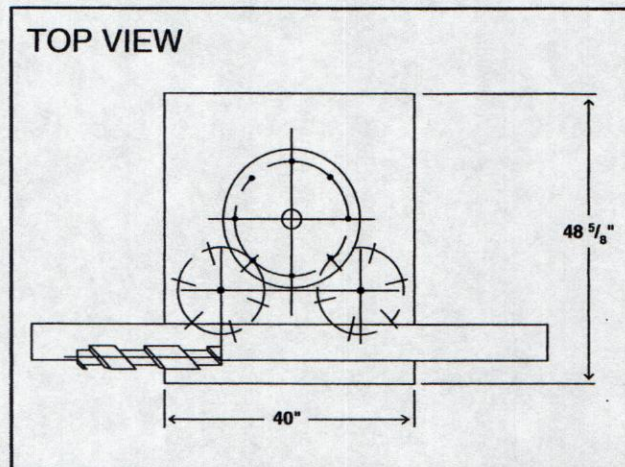
## Additional Features

- Automatic stop in the event of a container jam with indicator lights to alert operator of the source of the trouble
- Push-button control to advance or retard timing screw on machines with servo driven screw
- Braking system stops machine instantly in the event of an emergency stop
- Fingertip adjustment of two-speed drive

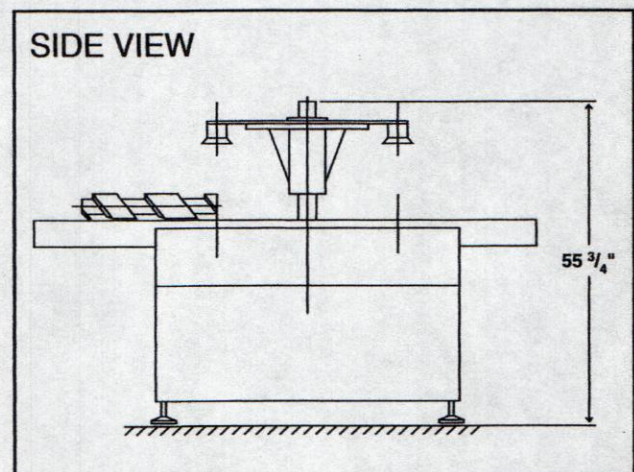
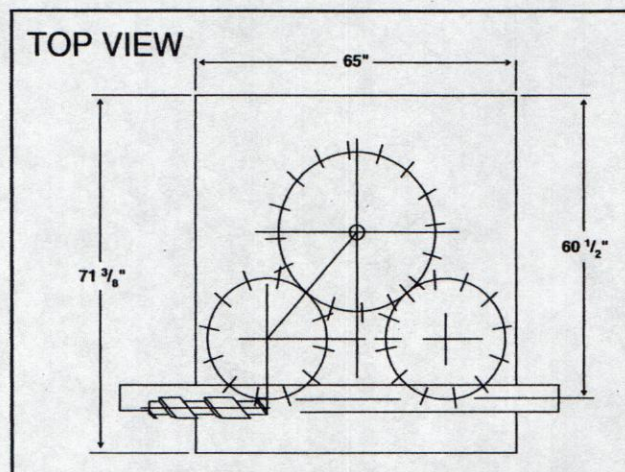
which shifts automatically to high or low speed according to sensed bottle accumulation, or connection directly to your synchronous line shaft

## Options

- "Choke neck" container detection and ejection system
- Container leak detection and ejection system
- Servo motor timing screw drive system
- Complete machine guarding



**MODEL BD 1800-6-8**



**MODEL BD 3200-12-16**

For more information contact:

**Joseph E. Seagram & Sons, Limited**

Bottling Development

592 Colby Drive • Waterloo

Ontario • Canada • N2V 1A2

Telephone (519)886-9090

Fax (519)886-9306

Sales Agent:

*Packaging – Processing*

**Bid on Equipment**

1-847-683-7720

[www.bid-on-equipment.com](http://www.bid-on-equipment.com)