

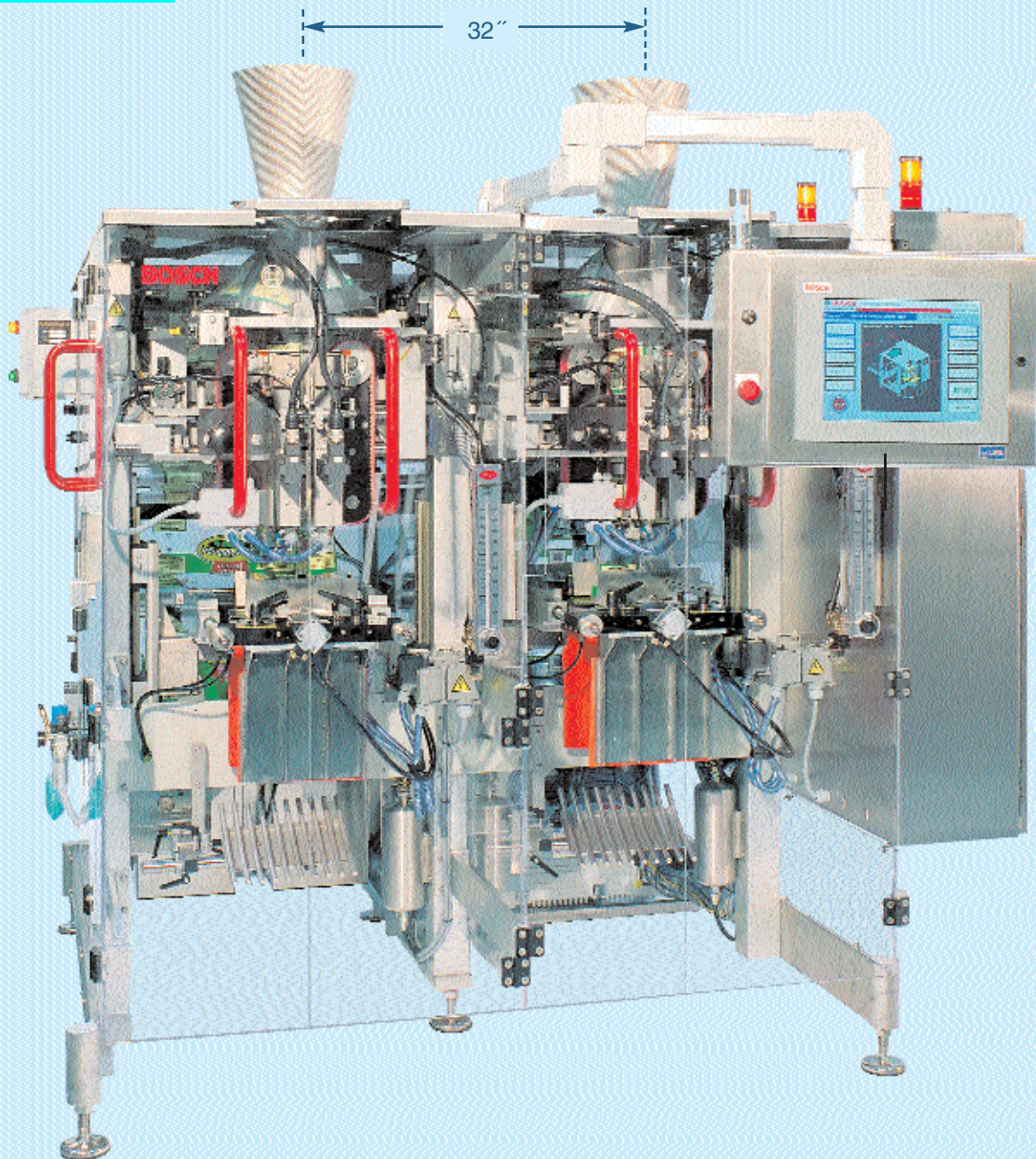
# Continuous Twin Form, Fill and Seal Machine

## SVE 2510 TW

Packaging - Processing  
**Bid on Equipment**  
1-847-683-7720  
[www.bid-on-equipment.com](http://www.bid-on-equipment.com)



**BOSCH**  
Invented for life



- Open single frame construction available in stainless steel and NEMA 4 controls
- Compact footprint with forming tubes on 32" centerlines
- Controls allow simultaneous running of two different package sizes at different speeds
- Output up to 400 bags per minute

# Continuous Bag Form, Fill and Seal Machine

## SVE 2510 TW Technical Data

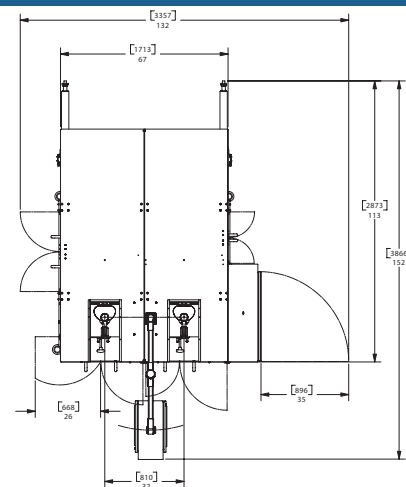
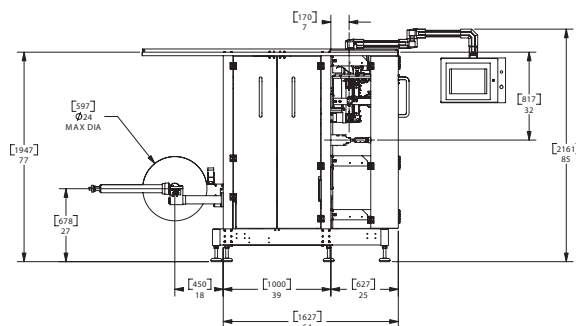
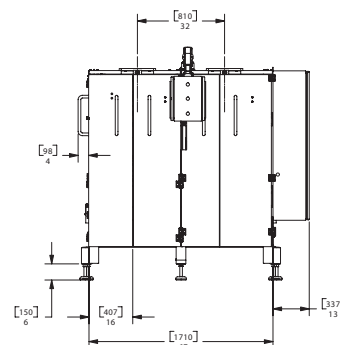
### Specifications

Flat Bag	Width	(60mm - 250mm) 2-1/3 - 10 inches
Stand Up Bag	Width	(40mm - 220mm) 1-1/2 - 9 inches
	Depth	(25mm - 105mm) 1 - 4 inches
	Width + Depth	(250mm maximum) 10 inches
Bag Length		(75mm - 500mm) 3 - 20 inches
Center Line of Formers		32 inches
Machine Speed*		Up to 400 bpm
		*Speeds are product and film dependent
Packaging Material	Width	(540mm maximum) 21 inches
	Diameter	(650mm maximum) 26 inches
	Core ID	(75mm) 3 inches
Power Consumption		3 phase 208-575 V
		1 phase 208-240 V optional
		10 KVA max (varies with film type and speed)
Air Consumption (will vary based on options)		3.8 CFM @ 75 PSI for PE
		.38 CFM @ 75 PSI for HS
		3/4 inch infeed minimum
Machine Control		Allen-Bradley RS Logix 5000™ series
Drives		Allen-Bradley Ultra 3000, SERCOS
Servo Motors		Allen-Bradley MPL™ Series
HMI		Windows XP™ based 15" touchscreen
		Screens developed in Wonderware™
		Allen-Bradley RSview™ optional
Pneumatics		Operated via field bus
Proximity Switches		Connected on field bus

Illustrations and specifications contained in this brochure are for general information only. All dimensions and specifications are subject to change without notice.

Robert Bosch Packaging Technology, Inc.  
9890 Red Arrow Highway, P. O. Box 579  
Bridgman, MI 49106-0579

Telephone 269-466-4000  
Facsimile 269-466-4040  
Website www.boschpackaging.com



# BOSCH

Invented for life

Packaging - Processing  
**Bid on Equipment**  
1-847-683-7720  
www.bid-on-equipment.com