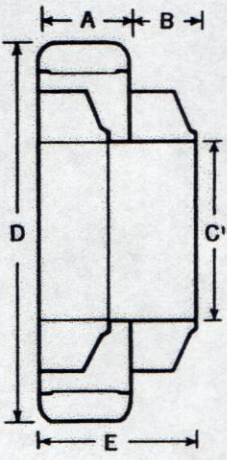
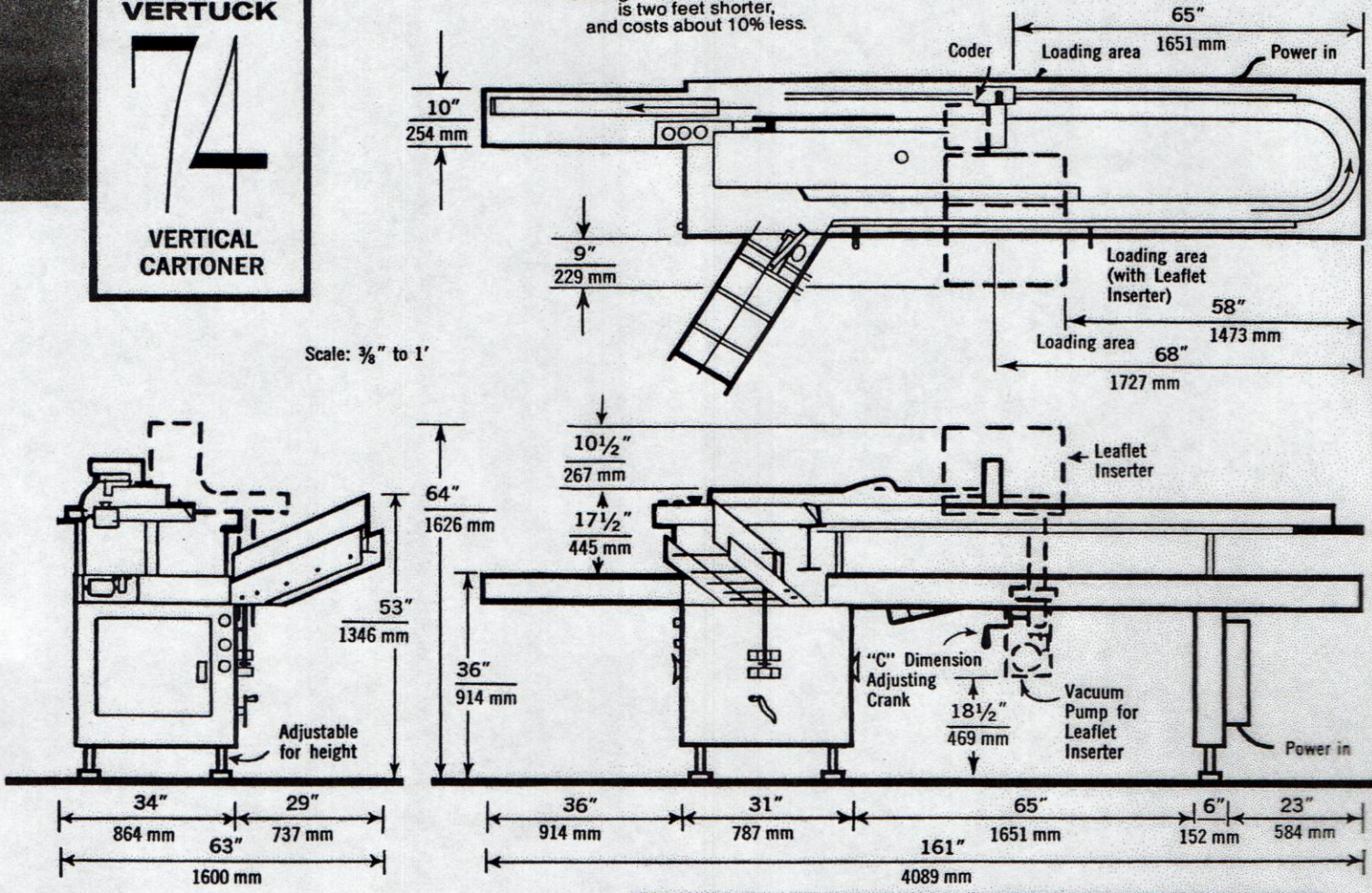
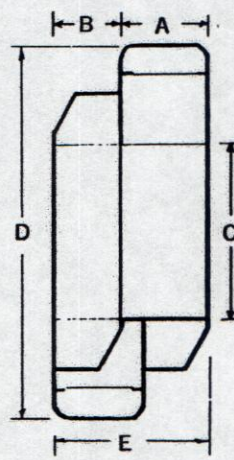


For slower speed operation, or for use with automatic loading devices, our Model 72 is two feet shorter, and costs about 10% less.

Scale: 3/8" to 1'



**STRAIGHT TUCK**



**REVERSE TUCK**

VERTUCK 74 Specifications				
STANDARD CARTON RANGE	Minimum	A	B	C
	Maximum	7/8"	3/4"	2 1/4"
Metric in millimeters	Minimum	22	19	57
	Maximum	127	89	254
→ Extended carton range available on factory approval.				
LEAFLET INSERTER	Size Range: 7/8" x 4" to 1 3/8" x 8"			
	Metric: 22 x 102 mm to 35 x 203 mm			
MACHINE DIMENSIONS	Filling Height	Discharge Height	Length	Width
	32"-36"	32"-36"	161"	34"
Metric	813-914	813-914	4089	864
Hopper Capacity	23" of Cartons — 584 mm			
Drive Motor	1 1/2 HP, Variable Speed DC/SCR Drive			
Power Required	230 Volt AC, 50/60 HZ, 3 PH, 15 Amps			
Weight	Net: 2300 Lbs.		Shipping: 2700 Lbs.	
	Metric: Net: 1043 kg		Shipping: 1225 kg	
Operating Speed	20 - 120 Cartons Per Minute			

All Bivans machines are designed to be safe and reliable, but Manufacturer is not responsible for malfunctions due to incorrect use or maintenance by Employer. Per OSHA regulations, Employer is responsible for safe use and operation.

Product improvement is a continuing Bivans Corporation project. Therefore, all specifications are subject to change without notice.

Packaging - Processing  
**Bid on Equipment**  
1-847-683-7720  
www.bid-on-equipment.com



**BIVANS CORPORATION**  
2431 DALLAS STREET, LOS ANGELES, CALIFORNIA 90031, U.S.A.  
PHONE: (213) 225-4248 • CABLE: BIVCORP

Litho in U.S.A. 3/86 F.Q.