

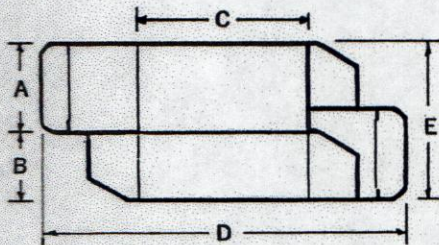
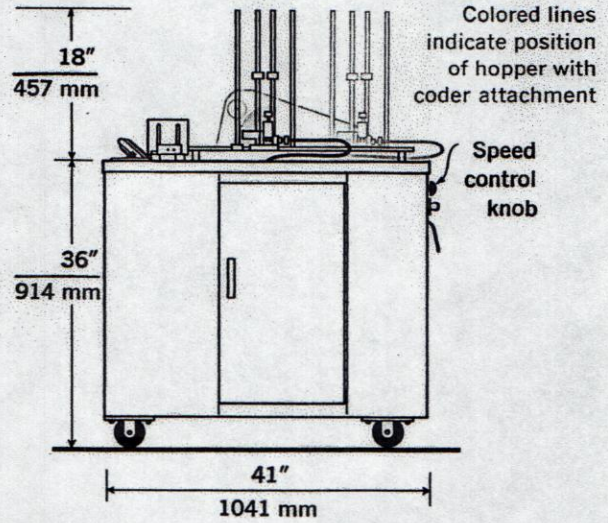
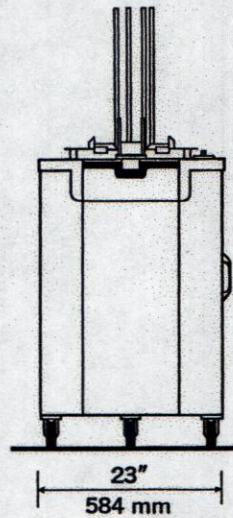
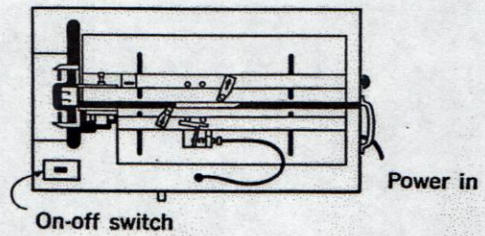
# TUCK-O-MAT 50

Scale: 1/2" to 1'

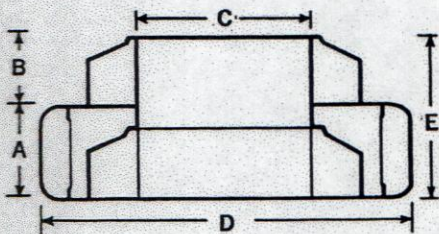
## SPECIFICATIONS

All Bivans machines are designed to be safe and reliable, but Manufacturer is not responsible for malfunctions due to incorrect use or maintenance by Employer. Per OSHA regulations, Employer is responsible for safe use and operation.

Product improvement is a continuing Bivans Corporation project. Therefore, all specifications are subject to change without notice.



REVERSE TUCK



STRAIGHT TUCK

CARTON DIMENSIONS		Standard Carton Range	A	B	C	D	E
REVERSE TUCK	Minimum	7/8"	3/8"	1 1/4"	—	—	—
	Maximum	5"	3 1/2"	12"	17"	—	—
STRAIGHT TUCK	Minimum	7/8"	3/8"	2 1/2"	—	—	—
	Maximum	5"	3 1/2"	10"	12"	—	—
CODER and DEBOSSER	Minimum	—	—	—	2 3/4"	1 1/4"	—
	Maximum	—	—	—	10"	7 1/2"	—
REVERSE TUCK	Minimum	22	10	32	—	—	—
	Maximum	127	89	305	432	—	—
STRAIGHT TUCK	Minimum	22	10	64	—	—	—
	Maximum	127	89	254	305	—	—
CODER and DEBOSSER	Minimum	—	—	—	70	32	—
	Maximum	—	—	—	254	191	—

Extended carton ranges available on factory approval.

MACHINE DIMENSIONS	Deck height	Length	Width	CODER ATTACHMENT		
	36"	41"	23"			
Metric	914	1041	584			
Drive motor	1/2 hp, 60 cycle, 115 volts			Power: parent machine		
Shipping weight	475 lbs.	Metric	215 kg	Ship. Wgt.	104 lbs.	47 kg
Net weight	305 lbs.		138 kg	Net weight	45 lbs.	20 kg
Operating speed	30-75 cartons per min. Note →			30-60 cartons per min.		

Litho in U.S.A. 1-85 FQ



## BIVANS CORPORATION

2431 DALLAS STREET, LOS ANGELES, CALIFORNIA 90031, U.S.A.

CABLE: BIVCORP • PHONE: (213) 225-4248

Packaging - Processing  
**Bid on Equipment**

1-847-683-7720

www.bid-on-equipment.com