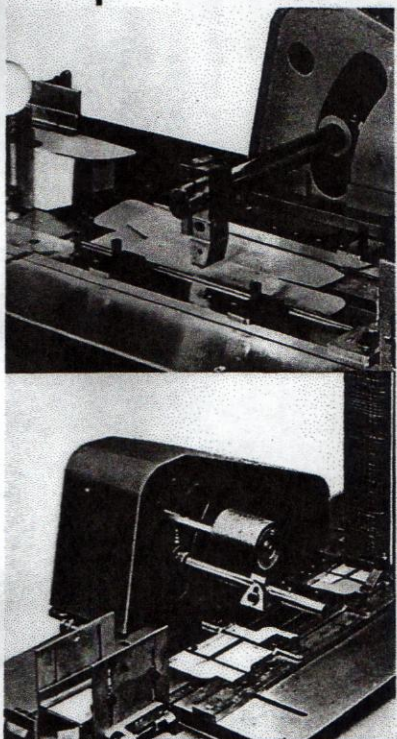


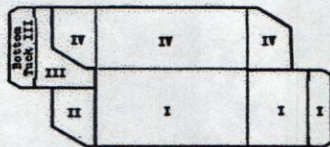
54L CONVEY-O-MAT ©

CARTON CLOSER 82



DEBOSSING #321 Debosses uses steel type for debossing without ink.

CODING #321 Coder, rugged, simple, versatile . . . for field or factory installation. Uses rubber plate or base lock type to print code numbers or product identification within 1½" x 1½" area on Right Side Panel IV, Back Panel I or Top Panel I (see diagram). For certain applications, metal type can be used for a maximum of two lines, each 1/16" x 1/2" long. Platen printing assures positive register, and type can be changed in minutes. Eliminate costly independent printing operations, inventory problems and overrun losses with the #321 coder.



DEBOSSING

CODING

HOT MELT GLUING

COLD GLUING

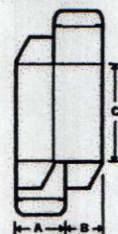
54L - 82 CARTON DIMENSIONS

		Standard Carton Range	A	B	C	D	E
REVERSE TUCK		Minimum	7/8"	3/8"	1 1/4"	—	—
		Maximum	5"	3 1/2"	12"	17"	—
STRAIGHT TUCK		Minimum	7/8"	3/8"	2 1/2"	(Dependent on carton proportions)	
		Maximum	5"	3 1/2"	10"	←	
REVERSE TUCK	Metric measure in millimeters	Minimum	22	9.5	32	—	—
		Maximum	127	89	305	432	—
STRAIGHT TUCK	Metric measure in millimeters	Minimum	22	9.5	64	(Dependent on carton proportions)	
		Maximum	127	89	254	←	

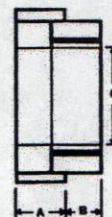
Extended carton ranges available on factory approval.



STRAIGHT TUCK



REVERSE TUCK



GLUE SEAL

All Bivans machines are designed to be safe and reliable, but Manufacturer is not responsible for malfunctions due to incorrect use or maintenance by Employer. Per OSHA regulations, Employer is responsible for safe use and operation.

Product improvement is a continuing Bivans Corporation project. Therefore, all specifications are subject to change without notice.

Litho in U.S.A. 9-90 FQ

proven dependable in worldwide use for over 40 years.



Packaging - Processing
Bid on Equipment

1-847-683-7720

www.bid-on-equipment.com