



502 And 507 Autosamplers



Packaging – Processing
Bid on Equipment

1-847-683-7720

www.bid-on-equipment.com

BECKMAN

Precision HPLC Autosamplers You Can Rely On.

Both the 502 & 507 autosamplers can be counted on for precision – day after day, year after year, from your first to your 15,000th sample *and beyond*. A built-in column compartment, with optional temperature control, insulates your column from lab temperature fluctuations, ensuring reproducible results.

Smart Autosamplers Integrated Into Gold Software.

Productivity and Automation.

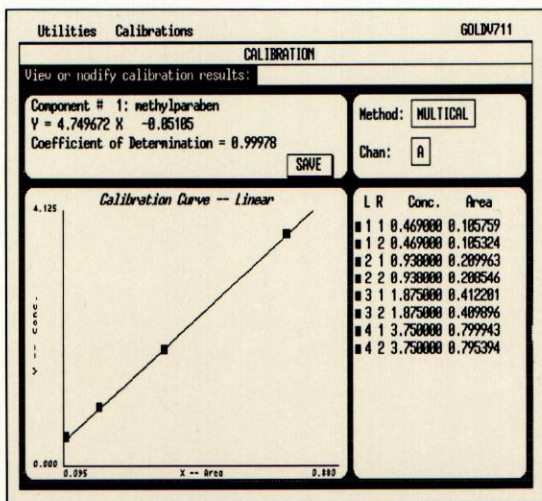
- All 502 & 507 functions can be PC controlled

- Automatic reinjection of out-of-range samples
- Monitors your calibrations and can rerun failed standards
- If system is not 'suitable', autosamplers can shut down or take corrective action
- Selective vial access for sampling versatility
- Tray quadrants allow sample loading while samples are running
- Programming templates make the 502 & 507 autosamplers simple to use

- Optional keyboard control provides stand alone operation for either autosampler

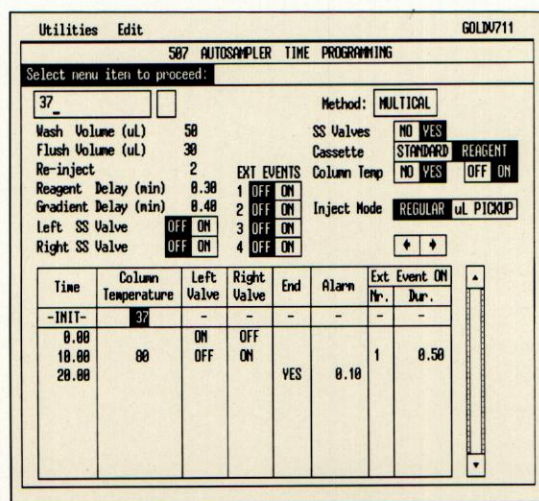
Validation/Sample Integrity.

Your HPLC sampling parameters are created as part of a complete method and stored with your chromatographic data in a comprehensive analysis record, making the 502 & 507 ideal for GLP compliance. An optional sample tray cooling ring helps keep labile samples cool or elevate sample temperature to keep samples in solution.



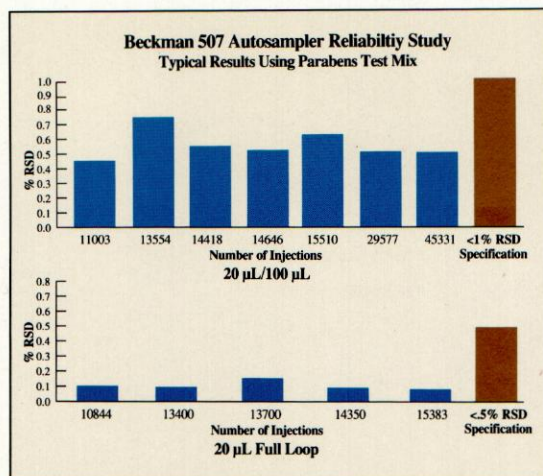
Calibration Linearity

Linearity of 5, 10, 20, and 40 μ L injections using a 507 Autosampler in Partial Loop mode demonstrates the superior injection accuracy (100 μ L Loop and 50 μ L flush before first injection).



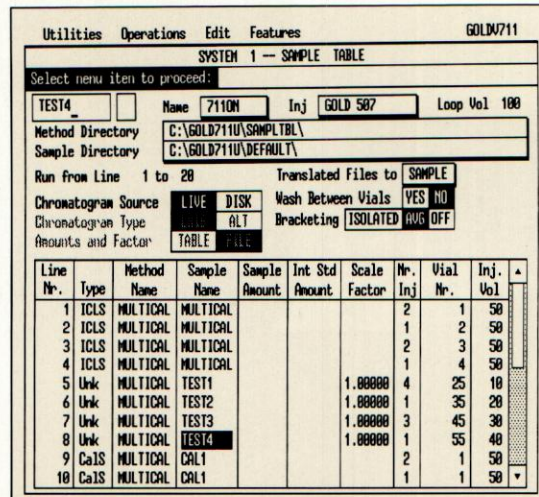
507 Time Programming Screen Within Method

With Gold Software the Autosampler time program can be saved on disk as part of a complete HPLC method and recalled when needed. All parameters can be accessed from a central PC.



Reliability Test

Reproducibility for injection modes is consistent and well within specifications even after 15,000 injections.



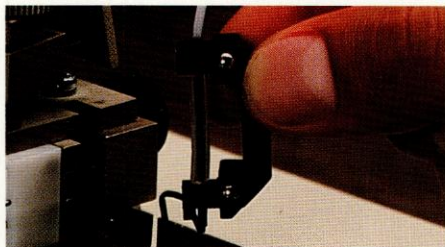
Sample Table Screen

Gold Software sample table controls the injection sequence. Number of injections, injection volume and vial can be "mixed and matched" with different analysis methods.

The 507 Autosampler

Designed for the Researcher.

For the methods development lab where versatility as well as automation is vital, choose the 507 Autosampler. Up to 96 sample vials



The solvent delivery cassette of the 507 can be easily interchanged with an optional Reagent Addition Cassette that mixes an external reagent with the sample just prior to injection.

can be loaded into four separate tray quadrants. Injection volume is programmable and you can even choose the sample conservation mode when injecting micro sample volumes. For even greater flexibility, several options are available:

- Stream Switching Valves make column switching, column regeneration, sample clean-up, heart cutting, and solid-phase extraction easier, faster and more precise
- Cassette that allows a reagent or standard to be mixed with the sample prior to injection
- Column heating
- Sample cooling/heating ring

The 502 Autosampler

Built for QC and Routine Analysis Labs.

Once the method is developed, the economical 502 is the workhorse of choice for the Quality Control Lab. With a 92-vial capacity, and highly reliable filled loop injections, user intervention is minimal and productivity is maximized. Options available for the 502 include:

- Large Capacity Sample Tray accommodates 48 (4 mL) vials for semi-prep applications and increases the maximum injection volume to 2 mL for greater throughput
- Column heating
- Sample cooling/heating ring



507 Module

- A** 3 injection modes: Filled-Loop, Partial-Loop, Sample Conservation Mode.
- B** 96-Vial capacity in four quadrants, plus separate vial for needle rinse liquid.
- C** Reproducible injection volumes – as good as <0.5% RSD.
- D** Built-in column compartment with optional programmable heating.

- E** Stream switching valves (optional).
- F** Reagent Addition Cassette (optional).
- G** Sample tray heat exchanger (optional).
- H** Optional front panel keyboard for stand-alone use (not shown).
- I** 30 mL wash reservoir.

502 Module

- A** 92-Vial capacity with 4 wash vials.
- B** Filled-Loop sample injection.
- C** Built-in column compartment with programmable heating option.
- D** Optional large sample vial kit for injection volumes up to 2 mL.
- E** Optional front panel keyboard for stand-alone use (as shown).

Specifications

Injection Size

Loop Fill (Rate)

Sample Vials

Needle Wash Reservoir

Needle Wash Volume

Reproducibility (Typical)

Carryover (Typical)

Sample Requirements

Dimensions

Weight

Options

Column Oven

Sample Tray Heat Exchanger

Keyboard

Stream Switching

Reagent Addition

Large Sample Vials

Specifications subject to change without notice.

Ordering Information

507 Autosampler

Filled-Loop: 10-999 μ L

Partial-Loop: <50% Loop Volume

Sample Conservation Mode: <40% Loop Volume

Digital Dispenser (1 μ L/sec)

96 qty. (12 x 32 mm)

30 mL

30-999 μ L

Filled-Loop: <0.5%RSD

Partial-Loop: <1.0%RSD

Sample Conservation Mode: <1.5%RSD

<0.2% with 30 μ L flush

<0.1% with 50 μ L flush

Full Loop: 1.5 x Loop Vol + Flush Vol.

Partial-Loop: Inject Vol + Flush Vol.

Sample Conservation Mode:

Inject Vol + 2 μ L (with micro vial)

Width: 17.0" (43.2 cm)

Length: 20.0" (52.0 cm)

Height: 12.0" (30.5 cm)

60.0 lbs. (27.0 Kg)

Ambient +5° to 80° C (\pm 1°) 3 x 3.5 x 30 cm

0° to 50°C. Use external temperature bath

For use apart from System Gold*

2 each, 6-port, 2-way, time-programmable

Mixes external reagent with sample (1:1 ratio) while filling loop

—

PC Controlled* For System Gold w/IBM

240630 507B' Autosampler

240637 "507T" Autosampler

With column oven and sample cooling**

240640 "507R" Autosampler

With column oven, sample cooling,**

and column switching

Keyboard Controlled* For System Gold w/NEC or Stand-Alone

240641 507B' Autosampler

240645 "507T" Autosampler

With column oven and sample cooling**

240648 "507R" Autosampler

With column oven, sample cooling,**

and column switching

502 Autosampler

Filled-Loop: 10-999 μ L

up to 2000 μ L with Large Sample Vial option

Digital Dispenser (2 μ L/sec);

or Head Space Pressure

(= 50 μ L/sec) with Large Sample Vial option

92 qty. (12 x 32 mm); or

48 qty., 4 mL (17 x 38 mm)

8 mL

50 μ L

Filled-Loop: <0.5%RSD

<0.2% with 50 μ L flush

Filled-Loop Only:

<100 μ L injection: 3 x Loop Vol + Flush

100-499 μ L injection: 2 x Loop Vol + Flush

>500 μ L injection: 1.5 x Loop Vol + Flush

Width: 17.0" (43.2 cm)

Length: 20.0" (52.0 cm)

Height: 10.5" (27.7 cm)

55.0 lbs. (24.9 Kg)

Ambient +5° to 80° C (\pm 1°) 3 x 3.5 x 30 cm

0° to 50°C. Use external temperature bath

For use apart from System Gold

—

—

48 qty., 4 mL capacity: uses

Head Space Pressure to fill loop

T · H · E

BECKMAN

Plus

SCIENCE

SUPPORT

SOLUTIONS



I.S./ISO 9000/EN 29000
QUALITY SYSTEM

Worldwide Sales Offices: Africa, Middle East (Switzerland, Nyon) (22) 994 07 07. Australia, Gladsville (61) 02 816-5288. Austria, Vienna (2243) 85656-0. Canada, Mississauga (800) 387-6799. France, Gagny (33) 1 43 01 70 00. Germany, Munich (49) 89-38871. Hong Kong, Aberdeen (852) 814 7431. Italy, Milan (39) 2-953921. Japan, Tokyo 3-3221-5831. Mexico, Mexico City (52) 5 264 0667. Netherlands, Mijdrecht 02979-85651. Poland, Warszawa 408822,408833. Singapore (65) 339-3633. South Africa, Johannesburg (27) 11-805-2014/5. Spain, Madrid (1) 358-0051. Sweden, Bromma (8) 98-5320. Switzerland, Nyon (22) 994 07

1181. U.S.A. 1-800-742-2345.

BECKMAN

2500 Harbor Boulevard, Box 3100 • Fullerton, California 92634-3100
TWX: 910-592-1260 • Telex: 678413 • Fax: 1-800-643-4366

Instruments, Inc



Printed in U.S.A. on recycled paper.

Packaging – Processing

Bid on Equipment

1-847-683-7720

www.bid-on-equipment.com