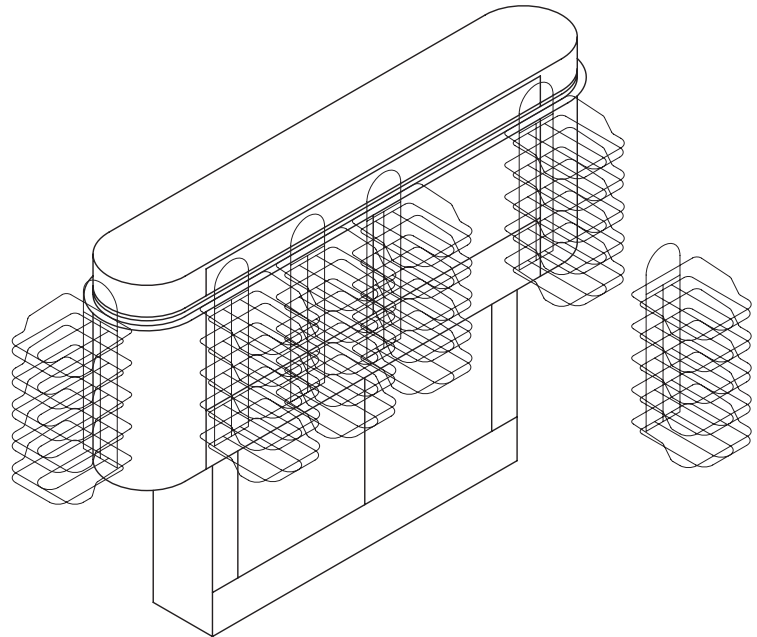


Conveyors Bus Trac™ Conveyor Systems model BT

Description:

The AVTEC Bus Trac™ is a soiled tray accumulator, utilizing vertical accumulation of soiled trays to form a “buffer” between the dining area and patrons returning trays and the dish room and scrapping personnel. The system consists of a series of rotating tray carrier baskets, either three, four or five tier high. The unit is available in any number of lengths, depending on the sizing requirements.



Specifications:

Provide AVTEC UL listed & NSF approved Bus Trac™ Soiled Tray Return System, Model BT. System designed to be mounted on stainless steel legs, pedestal base or wall. Overall size shall be (56”) wide x long, (minimum length 9’-0”), with tray holding capacity. Main housing shall be 18” wide x long. (minimum length 5’-10”).

System shall consist of a series of rotating removable tray carriers, with inserts, hangers and UHMW self-lubricating glides cantilevered from a 1/8” steel track, attached to a concealed closed-path drive system. Unit to have removable stainless steel side panels for access to drive components.

Main frame to be constructed of stainless steel structural channel, with 16 gauge, 300 series stainless steel enclosure and 18 gauge, removable access panels.

Tray carriers shall be (3) (4) (5) tier with buff colored molded ABS plastic insert on bottom tier, and shall be easily removable, without tools, and shall be capable of being cleaned in any conveyor style dish machine. Carriers shall be constructed of 1/4” electro-polished stainless steel wire; hangers shall be constructed of 3/8” stainless steel wire, with spacer wheel at bottom.

Drive system shall consist of motor, drive chain, axle and sprockets powering a steel conveyor chain rotating in a concealed, milled UHMW inner channel and attached to individual tray carrier hangers with Chain tabs and UHMW glides. Provide 2” chain take-up, sprocket adjustment and 3% chain stretch allowance utilizing special offset links.

Motor to be (3/4) (1) hp, 120 VDC, with variable speed drive and permanently lubricated bearings. Provide gasketed stainless steel control panel, (10” x 15” x 6”) with SCR solid state control and infinite speed dial and hour meter. Mandatory supervision of assembly and start-up by factory authorized technician is required. Two weeks written notice of installation time required.

3/4 HP drive motor, 15 amp 120/1F, incoming electrical service to AVTEC main control panel. Interconnection of 120 volt motor control circuit from control panel to drive motor. Interconnection of 120 volt circuit from start/stop switch to main control panel. Interconnection of 120 volt circuit from control panel to beam limit switch.

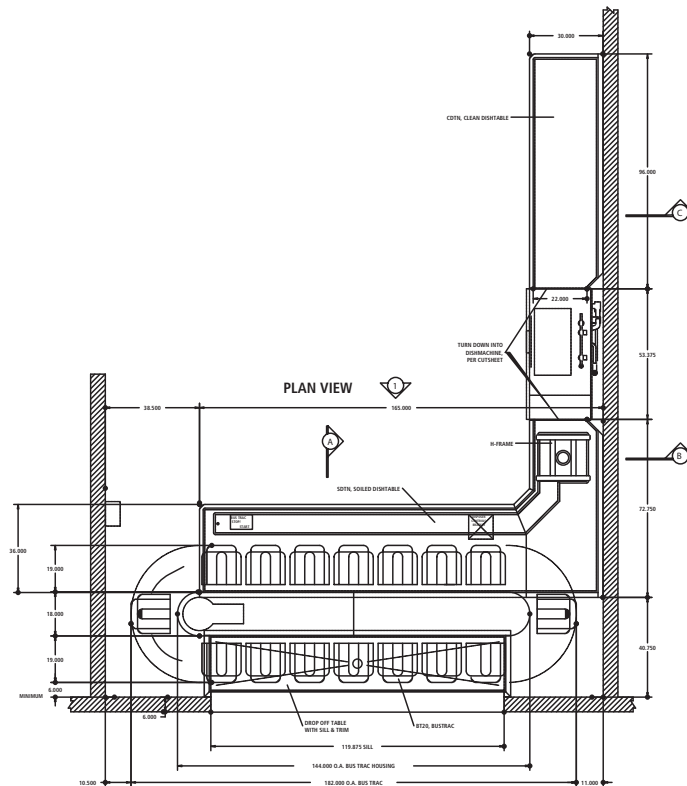
Standard Features:

- Chain link drive system with removable carriers—no belt service headaches
- Removable tray carriers—easily cleaned in any commercial conveyor dish machine
- Removable tray insert on bottom tier to accommodate patrons without trays
- Vertical accumulation offers 3-5 times the accumulation of soiled tray in the same space as standard tray return conveyors
- Infrared, polarized retro-reflective beam type limit switch, self contained and fully gasketed with stainless steel mounting brackets

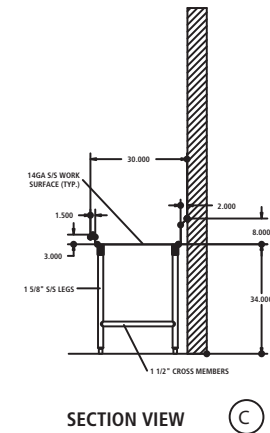
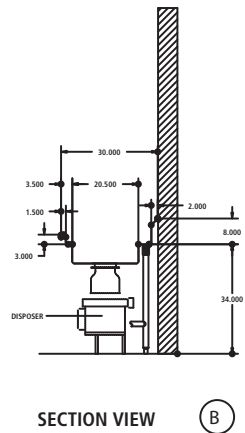
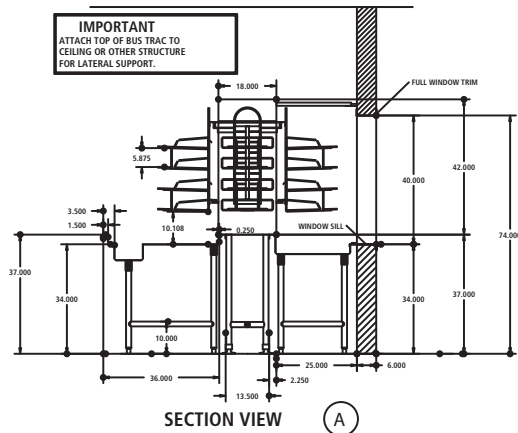
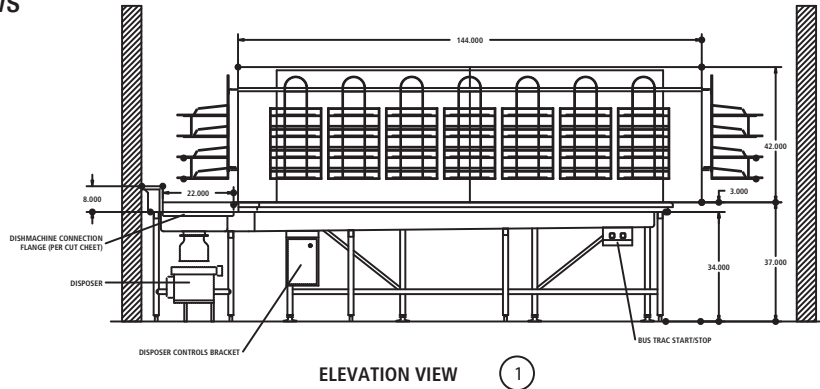
Optional Accessories:

- Half-round clear plastic insignia mounted at top of hanger, printed with logo or motto (Provide copy of logo or motto)
- Full base 13 1/2" x _____, stainless steel
- _____ Additional buff colored ABS molded plastic tray carrier inserts.
- _____ Additional remote stop start switch(es) in stainless steel housing
- Custom fabricated front drop table, 14 gauge, #300 series stainless steel, per drawings
- Custom fabricated dish table, with
 - Scrapping trough
 - Silver saver
 - sliding bridges
 - pre-installed transition hardware for (pulper) (disposer) (Trayveyor) (Hardware supplied by KEC)
 - Over shelf (wall) (table) mounted per drawings
 - Sink, size and shape per drawings
 - (Removable) (Mobile) bridges
- Vacuum breaker cutouts in backsplash
- Gravity Roller sections, recessed, per drawing
- _____ Mobile silver soak sink (s)
- _____ Mobile dish table bridge(s) with 14 gauge stainless steel tops, (and over shelf) for holding two 20" x 20" dish racks
- Cafeteria side front enclosure panels to be clad with #_____color plastic laminate manufactured by _____, or equal
- Cafeteria side stainless steel base to be clad with #_____color plastic laminate manufactured by _____, or equal
- Molded plastic tray carrier inserts to be ABS color #_____ (white, black, red, or gray standard colors available at additional price—additional colors available in quantities of 100 or more at additional price (twelve week delivery time required)

Top View



Front & Side Views



IMPORTANT
ATTACH TOP OF BUS TRAC TO
CEILING OR OTHER STRUCTURE
FOR LATERAL SUPPORT.

Bus Trac Application Data

Number of Tray Carriers

*OA Length	Housing Length	Optional Base Length	No. of Tray Hgrs.	2 Tier	3 Tier	4 Tier
9'	5' 10"	4' 2"	8	16	24	32
10' 6.5"	7' 4.5"	5' 8.5"	10	20	30	40
12' 1"	8' 11"	7' 3"	12	24	36	48
13' 7.5"	10' 5.5"	8' 9.5"	14	28	42	56
15' 2"	12'	10' 4"	16	32	48	64
16' 8.5"	13' 6.5"	11' 10.5"	18	36	54	72
18' 3"	15' 1"	13' 5"	20	40	60	80
19' 9.5"	16' 7.5"	14' 11.5"	22	44	66	88
21' 4"	18' 2"	16' 6"	24	48	72	96
22' 10.5"	19' 8.5"	18' .5"	26	52	78	104
24' 5"	21' 3"	19' 7"	28	56	84	112
26'	22' 10"	20' 2"	30	60	90	120
27' 6.5"	24' 4.5"	22' 8.5"	32	54	96	128
30' 7.5"	27' 5.5"	25' 9.5"	36	72	108	144
33' 8.5"	30' 6.5"	28' 10.5"	40	80	120	160
36' 9.5"	33' 7.5"	31' 11"	44	88	132	176

*Required 5" clearance each side.

