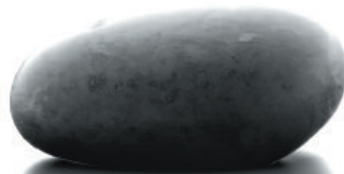
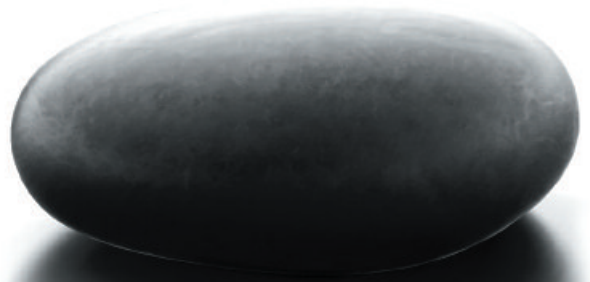




pure



simple



effective



Counter service weighing solution



Packaging - Processing

Bid on Equipment

1-847-683-7720

www.bid-on-equipment.com

IM
series



Pure, Simple, Effective: the IM series focuses on the essentials that retailers told us they wanted from a counter service scale.

Pure

The IM series contains just what's needed in a counter service scale for today's modern retailer. The latest technology, easy back office integration, environmentally sound and great design. It's got everything you need and nothing you don't.

Simple

Simple to use, simple to install, simple to connect.
Plug it in, set it up and it goes.

Effective

Effective for your customers, your staff and for you.
It's a business tool that provides you with real, tangible benefits.

Packaging - Processing

Bid on Equipment

1-847-683-7720

www.bid-on-equipment.com

the complete

First Impressions count

The IM's cool contemporary design speaks volumes about the professionalism, trustworthiness and quality of your business. Its streamlined shape takes up less space on the counter yet still packs in all the features you need. As well as being robust and easy to clean, the keyboard gives tactile feedback to minimise operator errors.

Greener credentials



No large power supply inside the scale means it uses less energy – up to 20% less power than previous designs. That saves on your costs and is kinder to the environment. We also designed it specifically to contain no chemicals or substances that could be damaging to the environment when it is disposed of at the end of its life.

Just what you need... today and tomorrow

The IM range has a model for every location in your store – the compact IM100 monoblock model, the IM202 with an increased number of programmable keys or the IM300 for self serve areas with up to 160 self serve keys. The IM400 two-piece with a raised display and keyboard cuts counter space needed and enables line of sight communication with the customer when serving. The IM500 hanging model is ideal for fish or wet areas.

Inside the scale, the unique Avery Berkel weighing technology means weighing performance is faultless under any condition.

It's simply the most advanced there is.

The processor and electronics are the latest design, meaning your investment won't be

IM400





counter service



out of date tomorrow, with support for Ethernet and USB devices. For even greater flexibility, Wi-fi is also available as an option. The 6000 PLU memory provided as standard means you'll always have enough memory to meet your needs, now and in the future and there's no need to pay a penny extra for the privilege.

continuous adhesive strip. The IM series prints all the graphics you need on the labels and the label design tools in our back office software packages enable flexible, fast, easy label designs.

Creating a network of scales is also quick and simple. The integrated network installation wizard automatically discovers the other scales it is connected to. Using our one of our software support packages, PLU files are copied and automatically transferred to all connected scales. A large scale network can be out of the box and up and running in the shortest time possible.

As well as dealing with your PLUs and operators, the IM is fully equipped to handle the latest traceability legislation, act as a packing machine, produce a myriad of reports and display eye-catching promotional messages when not in use.



Saves time and money

Everything ordered and in its place. Staff make fewer mistakes with the bright, logical display that has a wide viewing angle. The clearly marked, raised keys mean they know when they have pressed the key – there's no chance to mistype.

This helps you keep your profits on track and helps staff keep their cool when under pressure at a busy counter.

Printing on all models is fast, efficient and reliable with the ability to print on receipt paper, continuous adhesive strip or pre-cut labels. More than half of the

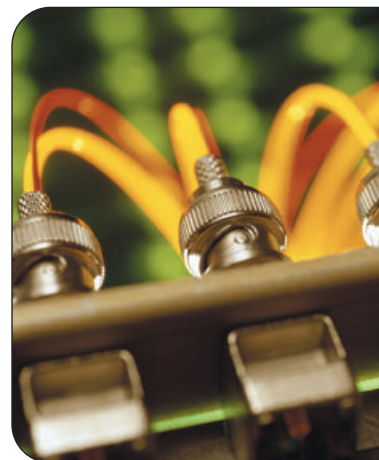
total cost of your scale over the next six years will be spent on labels, plenty of incentive to reduce that cost by printing on



Total store solution

IM features ethernet communications as standard, enabling you to link scales together on a counter or be part of a store-wide or company-wide network. Data management becomes simple when IM is combined with Avery Berkel's innovative back office support software. Automated PLU updates from a single, central point, automatic reporting of totals back to the store or company server, label and keyboard design

and traceability scheme set up are some of the advanced features possible. Whatever your particular need, we've got the right software package for your situation.





etail solution

Standard Capacities

15kg AVR
30lb x 0.01lb

Optional capacities

6kg AVR
12kg x 2g
30kg x 5g
50lb x 0.01lb

Interfaces

1 x RJ11 Ethernet
1 x RJ12 Cash Drawer
2 x USB (standard A-type connector)

Communications

Standard: 10/100 BaseT Ethernet, TCP/IP protocol
Optional: 802.11b/g wireless

Memory

Standard: 6000 PLUs

Programmable Keys

IM100, 400, 500: 42
IM202: 60
IM300: 80 standard, 160 optional

Printing

Thermal receipt/label printer
Roll diameter: 100mm
Max print width: 56mm
Max print length: 160mm
24 fonts, 12 configurable formats, max. 5 logos
or graphics

Dimensions (w x d x h)

IM100: 378 x 405 x 160mm
IM202: 378 x 448 x 528mm
IM300: 378 x 448 x 655mm
IM400: 378 x 356 x 530mm
IM500: 370 x 160 x 294mm (Ex. cradle and hanger)



Model Range



- Compact
- Integrated vendor & customer display
- 42 programmable keys



- Head up display
- 60 programmable keys



- Self service
- 80 standard or 160 optional keys



- Two-piece
- Saves counter space
- 42 programmable keys



- Hanging scale
- For fish & wet areas