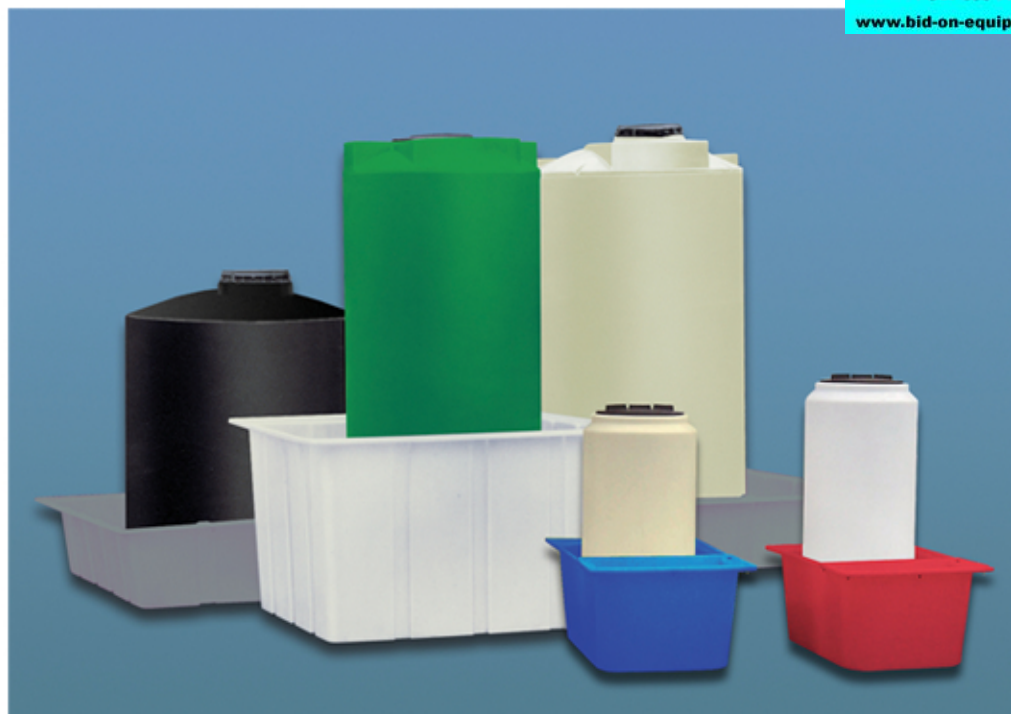


## Rectangular Secondary Containment Basins

Secondary containment basins (IRD) are molded in virgin high density crosslink or FDA-compliant linear polyethylene. They have a tapered design for nesting during shipping. They meet or exceed EPA requirements for containment of dangerous chemicals. Check with local regulatory agencies for compliance in your area. When determining size of secondary containment basins, always refer to factory drawings to confirm primary storage tank size compatibility.



Model Number	Capacity (US Gallons)	Dimensions (inches)			Contains Tank Max. Diameter (inches)	Weight (lbs) Linear PE
		Length	Width	Height		
IRD 40	52	32	26	20	20	25
IRD 80	95	47	32	20	24	40
IRD 140	155	52	38	24	29	65
IRD 200	200	57 ½	45	24	35	75
IRD 240	240	60	43	28	35	80
IRD 275	275	64 ½	52	24	42	75
IRD 330	330	72	43	31	35	35
IRD 375	375	66	66	24	58	100
IRD 495	495	69	69	29	61	125
IRD 660	660	83	64	40	48	220
IRD 950	950	83	83	46	68	320
IRD 1650	1650	99	99	53	84	400
IRD 1750	1750	218	108	21	2 each 90	400
IRD 3500	3500	218	108	40	2 each 90	700

Model number availability and individual specifications subject to change without notice. Gallonage and weights are approximate. All wall thicknesses conform to ASTM D-1998.

