

Double Wall Tanks

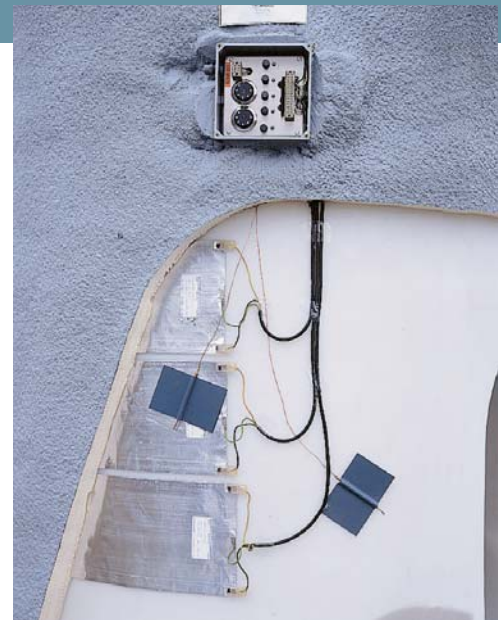
Double wall tanks (IMT) provide the best protection against hazardous chemical spills into the environment. Inner tank dome overlaps outer tank sidewall to prevent rainwater, snow and debris from entering into the containment basin. Our ability to heat trace and insulate make these tanks perfect for temperature sensitive chemicals. Molded-in lifting lugs and upper fitting flats are standard. Molded-in lower fitting flats, along with a sturdy Assmann designed bottom outlet, reduce the cost of expensive double wall outlets.

All double wall tanks are designed with wall thicknesses equal to or greater than that required by ASTM D-1998 standards. Double wall tanks can be customized by adding Seismic zone 4 or 120 MPH wind load tie down assemblies, leak detection, ultrasonic level indicators, and ladders.

Accessories for Double Wall Tanks

- Seismic zone 4 restraint
- 120 MPH wind load restraint
- Ultrasonic level indicator
- Leak detection system
- High and low level alarms
- Heat tracing and insulation
- Fiber Reinforced Ladders
- Top discharge assemblies with foot valve
- Standard 16" or optional 21" top manways

Double wall tanks can be equipped with accessories to fit your specifications (See pages 13-21.)

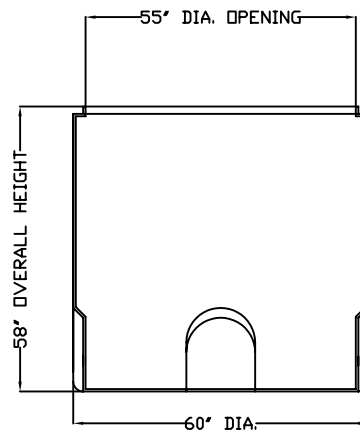
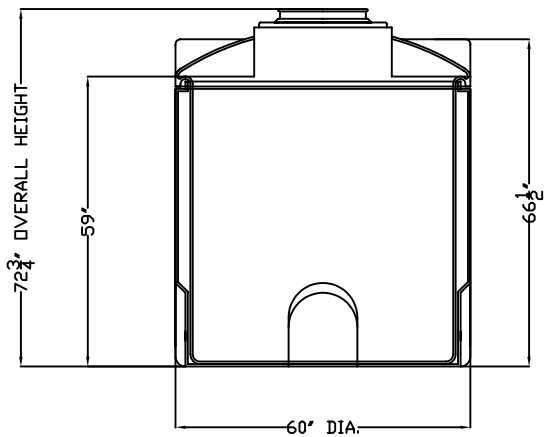
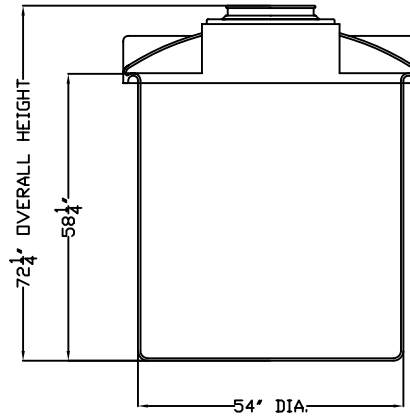
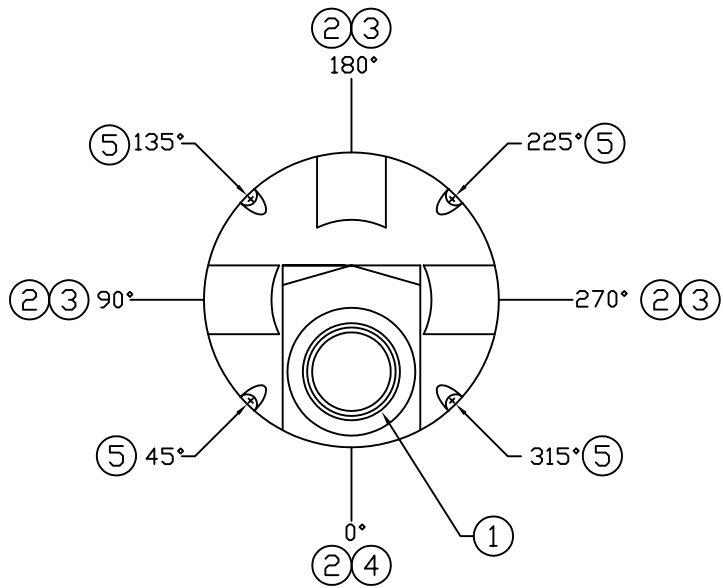


Model Number	Cap. (US Gals)	Dimensions (inches)		Weight (lbs) Linear Polyethylene						Weight (lbs) Crosslink Polyethylene						Access Open. (in)
				Primary Sp. Gravity			Secondary Sp. Gravity			Primary Sp. Gravity			Secondary Sp. Gravity			
		Dia.	Hgt.	1.5	1.9	2.2	1.5	1.9	2.2	1.5	1.9	2.2	1.5	1.9	2.2	
IMT 550	550	60	73	N/A	130	159	N/A	130	151	N/A	130	159	N/A	130	159	16
IMT 1050	1050	72	87	185	205	233	191	244	283	185	205	226	176	221	256	16
IMT 1550	1550	72	123	325	408	472	309	392	454	297	380	440	283	359	416	16
IMT 2050	2050	72	159	551	691	809	596	748	875	505	633	738	545	697	799	16
IMT 2550	2550	96	119	643	823	953	499	632	732	600	748	866	457	579	671	16
IMT 3050	3050	96	138	817	1022	1183	694	879	1018	739	944	1093	636	806	933	16
IMT 4050	4050	96	177	1252	1607	1870	1178	1492	1728	1158	1476	1700	1178	1492	1728	16
IMT 5250	5250	119	154	1484	1920	2225	1342	1699	1968	1372	1753	2025	1230	1558	1804	16
IMT 6550	6550	119	186	2181	2778	3200	2028	2569	2974	2000	2570	2960	2028	2569	2974	16

Model number availability and individual specifications subject to change without notice. Gallonage and weights are approximate. All wall thicknesses conform to ASTM D-1998.

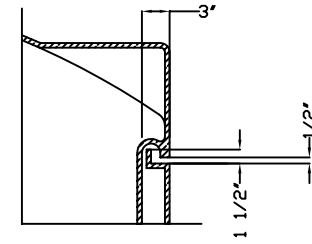


Certified to NSF/ANSI 61
Packaging - Processing
Bid on Equipment
 1-847-683-7720
www.bid-on-equipment.com

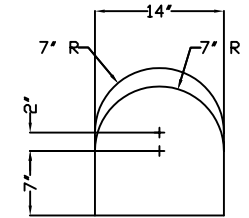
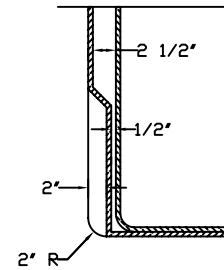


ACCESSORIES

MK	SIZE	DESCRIPTION	DEG	ELEV	DOM



LIP DETAIL



FLAT SPOT DETAIL

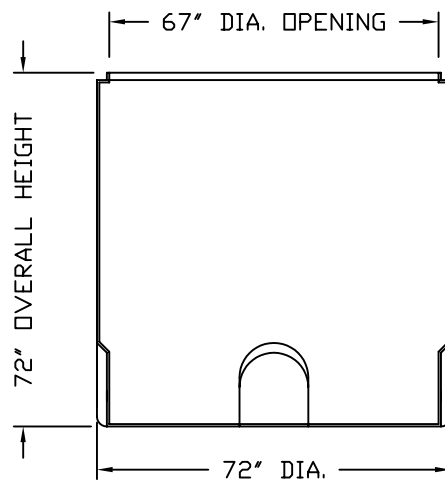
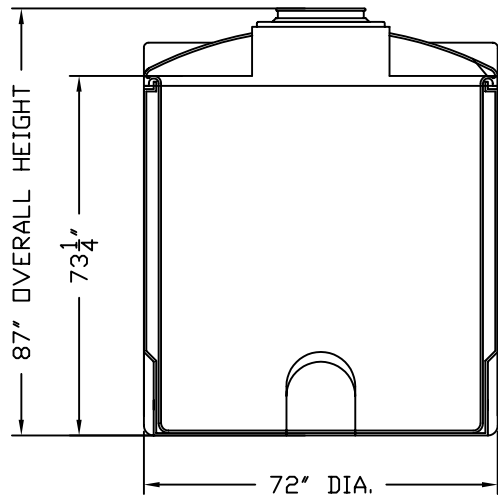
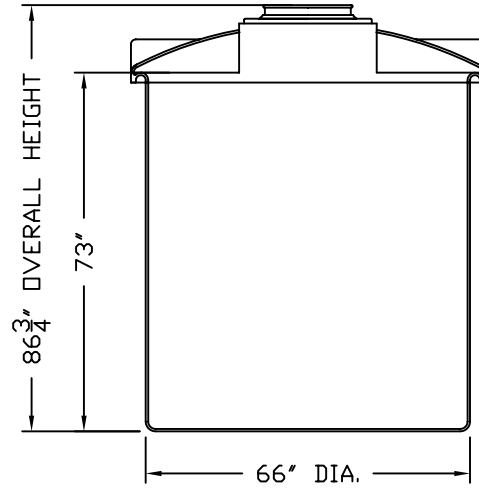
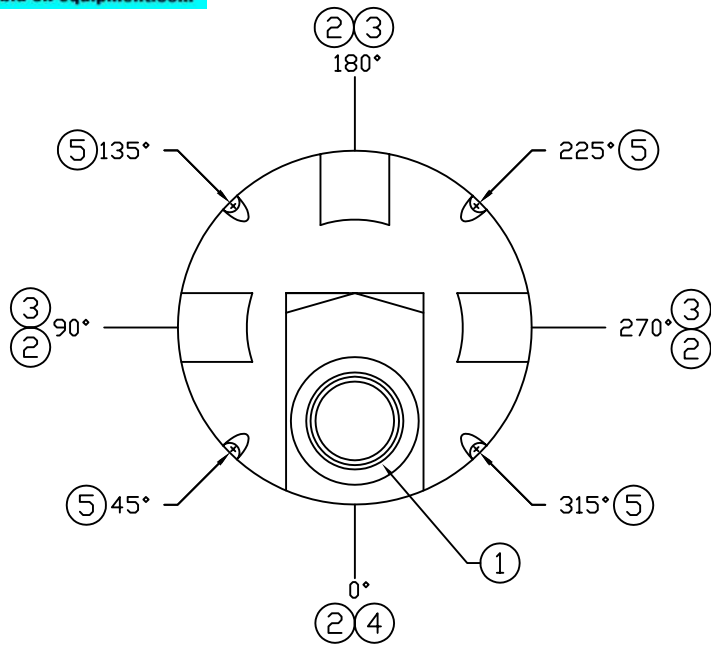
NOTES:

- 16" MANWAY W/ LEVER LOCKING COVER
OPTIONAL 21" THREADED
- LOWER FLAT SPOT (4 PLACES)
- 14" X 14" DOME FLAT SPOT (3 PLACES)
- 28" X 30" MANWAY FLAT
- LIFTING LUG ASSEMBLY (4 PLACES)

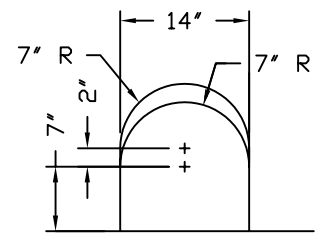
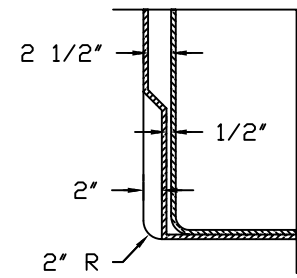
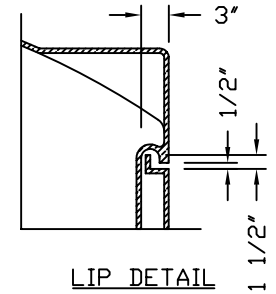
A	INSERTED A NEW TITLE BLOCK	06/12/08 MG
REV	REVISION DESCRIPTION	REV DATE

		300 N TAYLOR ROAD GARRETT, IN 46738		SALES ORDER	
		PHONE: (260) 357-3181 FAX: (260) 357-3738		OVERALL TANK WEIGHT - LBS.	
PRIMARY VESSEL	SPECIFIC GRAVITY -	SP.G. MAX	SECONDARY VESSEL	SPECIFIC GRAVITY -	SP.G. MAX
RESIN USED	TANK WEIGHT - LBS.		RESIN USED	TANK WEIGHT - LBS.	
-	POLYETHYLENE	TANK COLOR -	POLYETHYLENE	TANK COLOR -	

TITLE IMT 550		DRAWN BY: D. CRAGER	DRAWN DATE: 10/01/96
DOUBLE WALL STORAGE TANK		DWG NUMBER:	REV
ALL DIMENSIONS ARE IN INCHES AND ARE ±3%		IMT 550	A

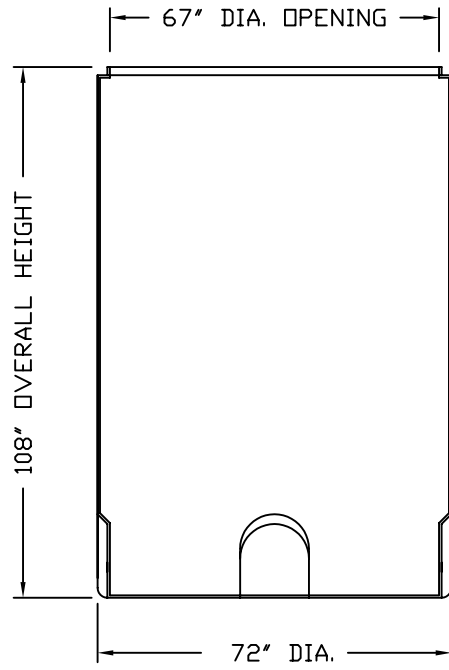
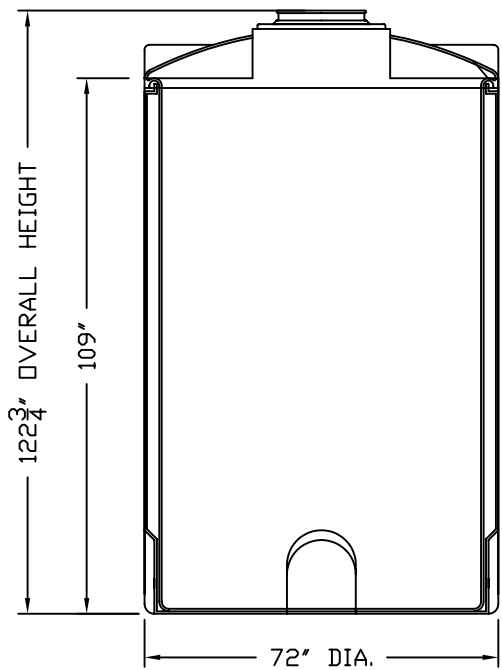
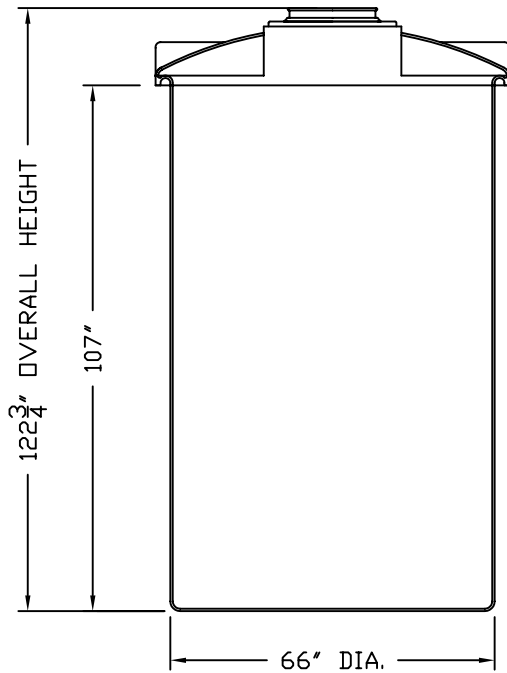
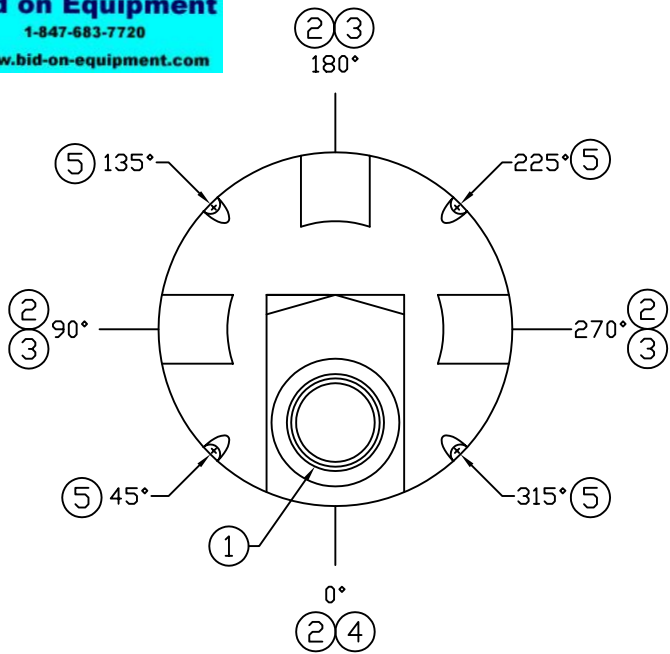


ACCESSORIES					
MK	SIZE	DESCRIPTION	DEG	ELEV	DOM



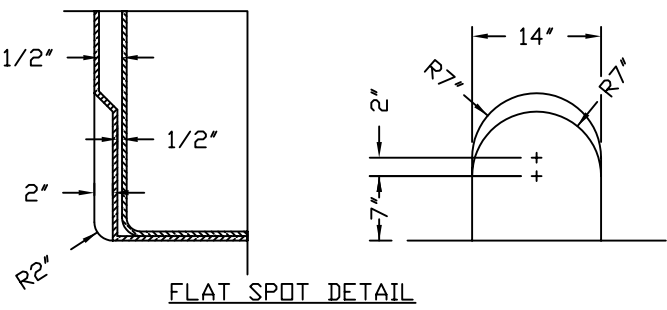
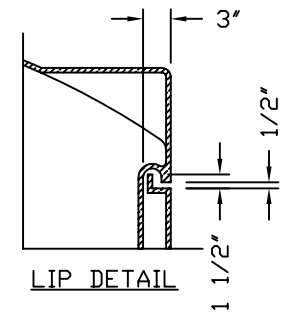
- NOTES:
- 16" MANWAY W/ LEVER LOCKING COVER
OPTIONAL 21" THREADED
 - LOWER FLAT SPOT (4 PLACES)
 - 14" X 14" DOME FLAT SPOT (3 PLACES)
 - 28" X 43" MANWAY FLAT
 - LIFTING LUG ASSEMBLY (4 PLACES)


A	INSERTED A NEW TITLE BLOCK		06/12/08 MG
REV	REVISION DESCRIPTION		REV DATE
		SALES ORDER 300 N TAYLOR ROAD GARRETT, IN 46738 PHONE: (260) 357-3181 FAX: (260) 357-3738	
OVERALL TANK WEIGHT - LBS.		OVERALL TANK WEIGHT - LBS.	
PRIMARY VESSEL	SPECIFIC GRAVITY -	SP.G. MAX	SECONDARY VESSEL
RESIN USED:	TANK WEIGHT - LBS.		RESIN USED:
-	TANK COLOR -		-
POLYETHYLENE			POLYETHYLENE
TITLE		DRAWN DATE:	
IMT 1050		D. CRAGER 7/30/97	
DOUBLE WALL STORAGE TANK		DWG NUMBER:	
-		REV	
ALL DIMENSIONS ARE IN INCHES AND ARE ±3%		IMT 1050 A	

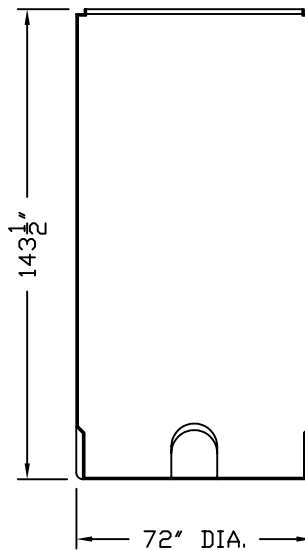
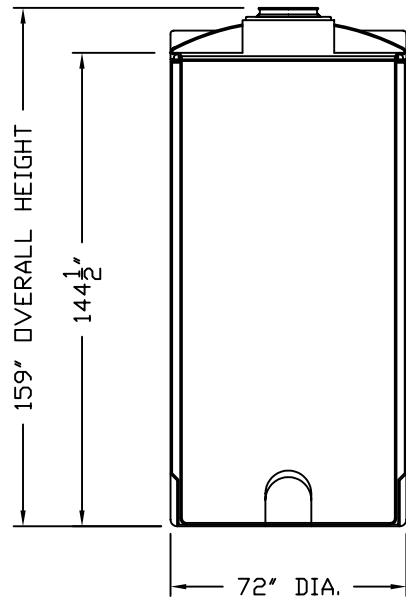
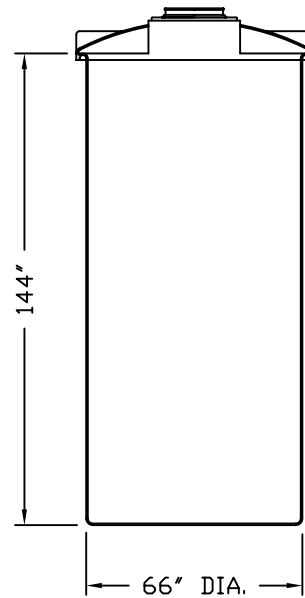
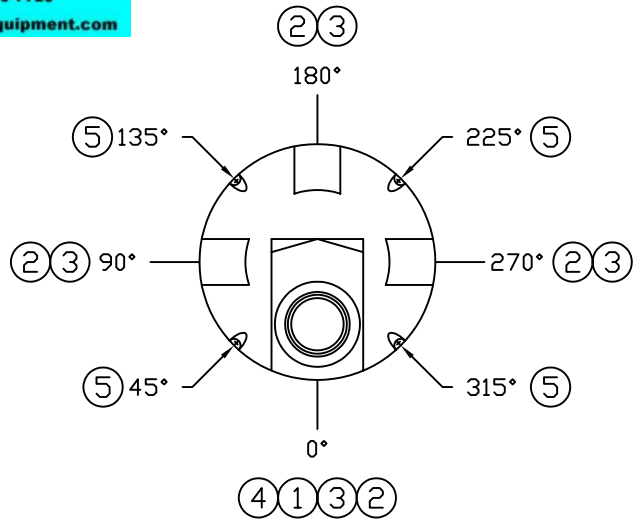


ACCESSORIES					
MK	SIZE	DESCRIPTION	DEG	ELEV	DOVE

- NOTES:
- 16" MANWAY W/ LEVER LOCKING COVER
OPTIONAL 21" THREADED.
 - 7" X 9" LOWER FLAT SPOT (4 PLACES)
 - 14" X 14" DOME FLAT SPOT (3 PLACES)
 - 28" X 43" MANWAY FLAT
 - LIFTING LUG ASSEMBLY (4 PLACES)

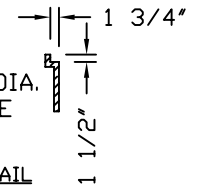
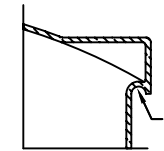
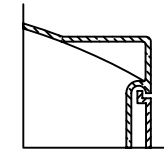


REV	REVISION DESCRIPTION	REV DATE
 300 N TAYLOR ROAD GARRETT, IN 46738 PHONE: (260) 357-3181 FAX: (260) 357-3738		
CUSTOMER APPROVAL		OVERALL TANK WEIGHT - LBS.
PRIMARY VESSEL RESIN USED: POLYETHYLENE SPECIFIC GRAVITY - TANK WEIGHT - LBS. TANK COLOR -	SP.G. MAX - LBS.	SECONDARY VESSEL RESIN USED: POLYETHYLENE SPECIFIC GRAVITY - TANK WEIGHT - LBS. TANK COLOR -
TITLE: IMT 1550 GAL. DOUBLE WALL STORAGE TANK ASSMANN CORPORATION ALL DIMENSIONS ARE IN INCHES AND ARE ±3%		DRAWN BY: D. MYERS DWG NUMBER: IMT 1550 DRAWN DATE: 5/7/03 REV: -

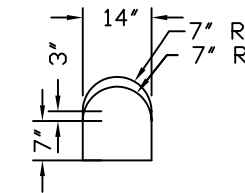
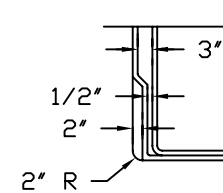


ACCESSORIES					
MK	SIZE	DESCRIPTION	DEG	ELEV	DOM

LIP DETAIL



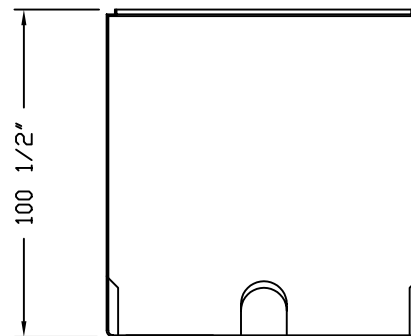
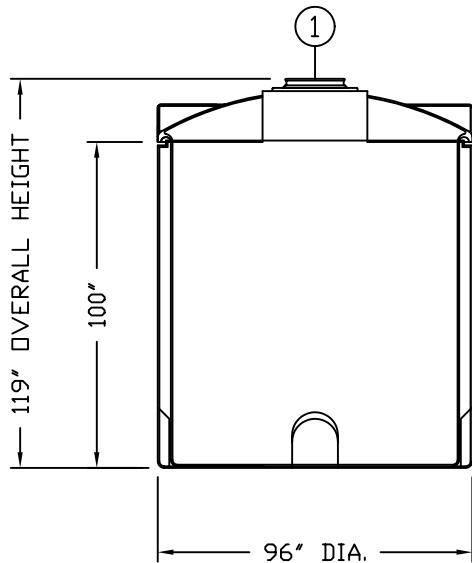
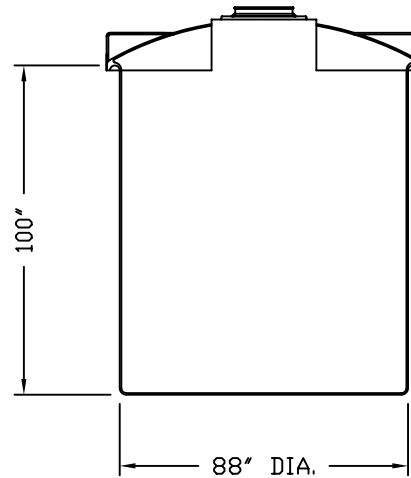
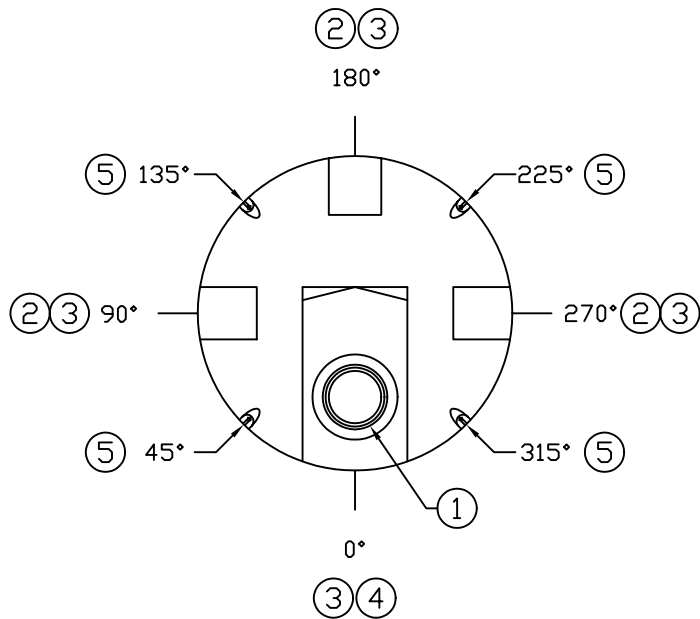
LOWER FLAT SPOT DETAIL



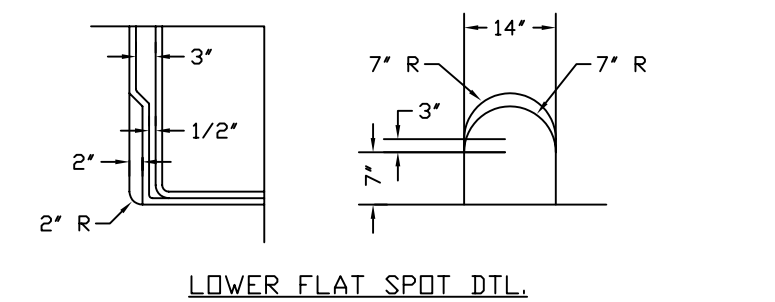
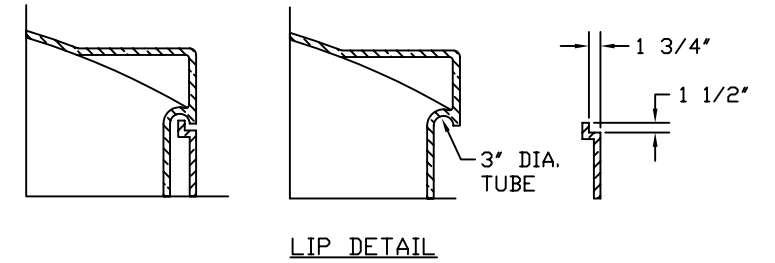
NOTES:

- 16" MANWAY W/ LEVER LOCK COVER
- LOWER FITTING FLAT SPOT (TYP. 4 PLACES)
- 18" x 18" DOME FLAT SPOT (TYP. 3 PLACES)
- 32" x 56" MANWAY FLAT
- LIFTING LUG ASSEMBLY (TYP. 4 PLACES)
- CALCULATED PRIMARY GALLONS PER INCH: 14.33
- CALCULATED PRIMARY CAPACITY: 2,056 GAL.
- CALCULATED SECONDARY GALLONS PER INCH: 17.06
- CALCULATED SECONDARY CAPACITY: 2,423 GAL.

REV	REVISION DESCRIPTION	REV DATE
<p>300 N TAYLOR ROAD GARRETT, IN 46738 PHONE: (260) 357-3181 FAX: (260) 357-3738</p>		
SALES ORDER		OVERALL TANK WEIGHT LBS.
PRIMARY VESSEL	SPECIFIC GRAVITY - SP.G. MAX	SECONDARY VESSEL SPECIFIC GRAVITY - SP.G. MAX
RESIN USED	TANK WEIGHT LBS.	RESIN USED TANK WEIGHT - LBS.
POLYETHYLENE	TANK COLOR NATURAL	POLYETHYLENE TANK COLOR -
TITLE IMT 2050 GALLON DOUBLE WALL STORAGE TANK		DRAWN BY: D. MYERS
ASSMANN CORPORATION OF AMERICA		DRAWN DATE: 12/6/07
ALL DIMENSIONS ARE IN INCHES AND ARE ±3%		DWG NUMBER: IMT2050
		REV: -



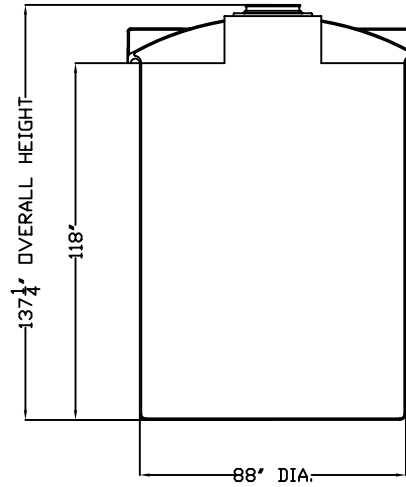
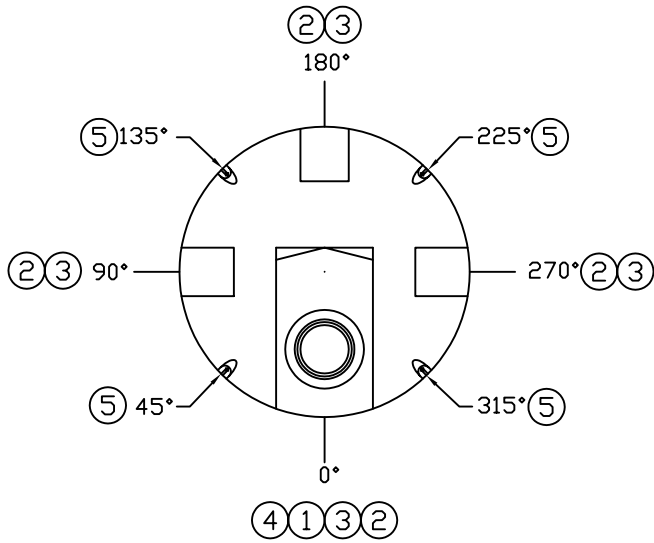
ACCESSORIES					
MK	SIZE	DESCRIPTION	DEG	ELEV	DOM



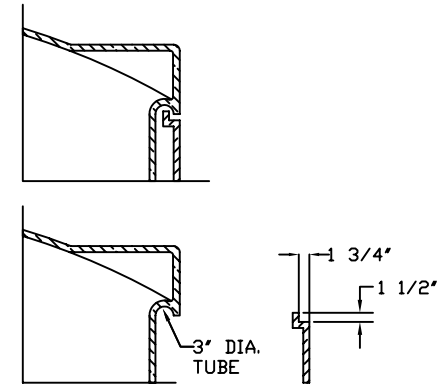
- NOTES:
 1 16" MANWAY WITH LEVER LOCK COVER
 2 LOWER FLAT SPOT (4 PLACES)
 3 18" X 18" DOME FLAT SPOT (3 PLACES)
 4 MANWAY FLAT
 5 LIFTING LUG ASSEMBLY (4 PLACES)

REV	REVISION DESCRIPTION		REV DATE
		300 N TAYLOR ROAD GARRETT, IN 46738 PHONE: (260) 357-3181 FAX: (260) 357-3738	CUSTOMER APPROVAL
PRIMARY VESSEL		SPECIFIC GRAVITY - SP.G. MAX	SECONDARY VESSEL
RESIN USED	TANK WEIGHT LBS.	TANK WEIGHT LBS.	TANK WEIGHT LBS.
POLYETHYLENE	TANK COLOR -	POLYETHYLENE	TANK COLOR -
TITLE		DRAWN BY	DRAWN DATE
IMT 2550 GAL. DOUBLE WALL STORAGE TANK		D. MYERS	5/7/03
ASSMANN CORPORATION		DWG NUMBER:	REV
ALL DIMENSIONS ARE IN INCHES AND ARE ±3%		IMT 2550	-

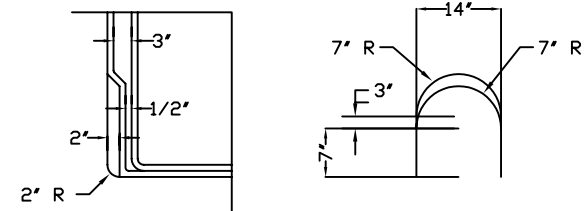
ACCESSORIES					
MK	SIZE	DESCRIPTION	DEG	ELEV	DOME



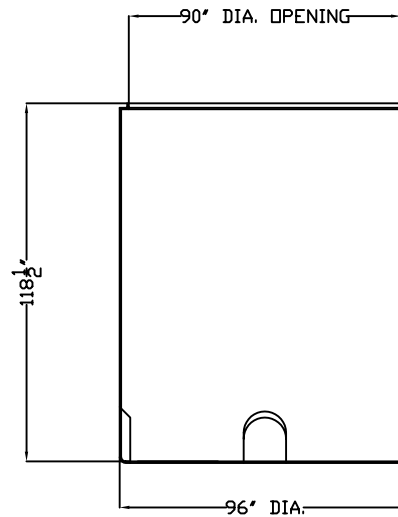
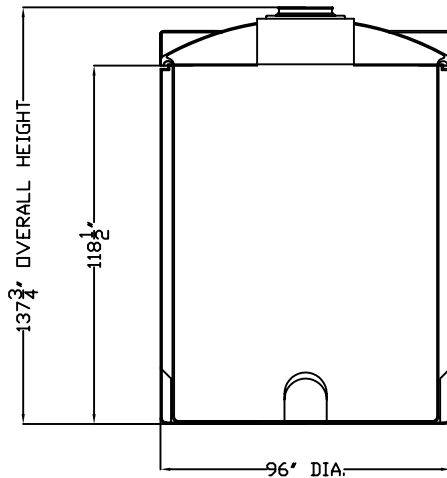
LIP DETAIL




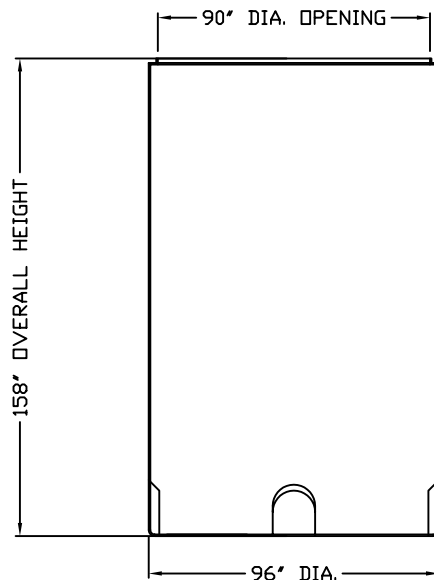
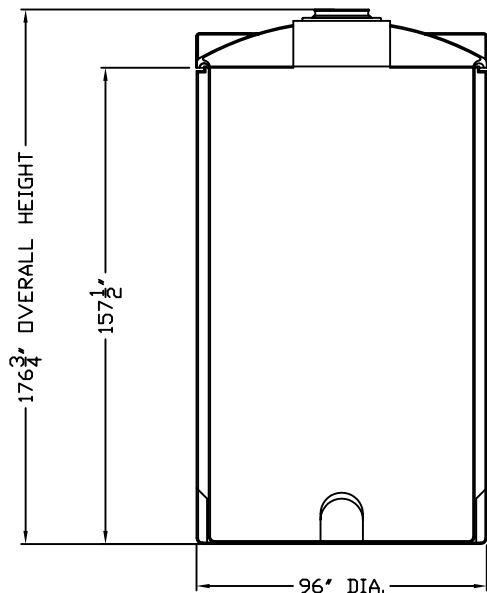
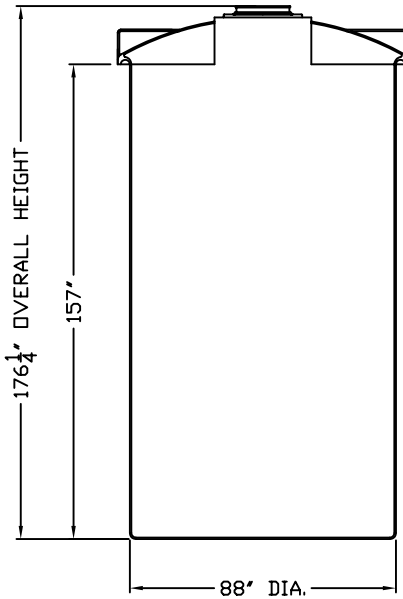
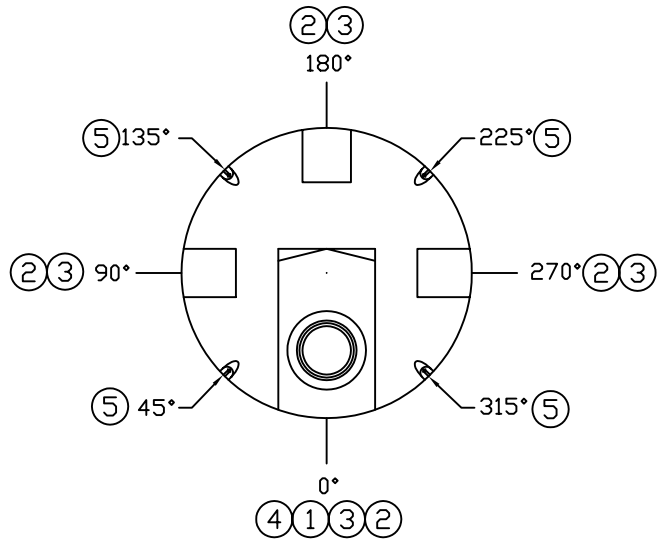
LOWER FLAT SPOT DTL.



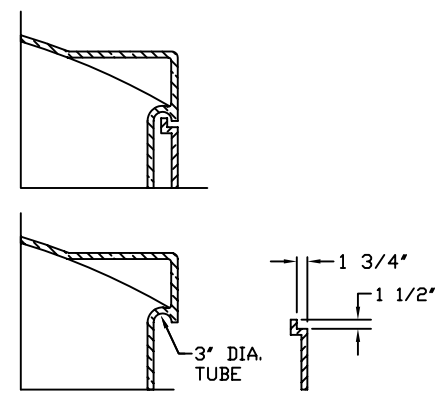
- NOTES:
 1 16\"/>



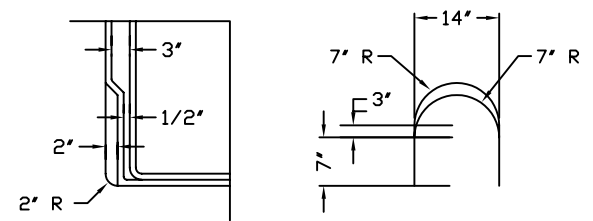
A	INSERTED A NEW TITLE BLOCK	06/12/08 MG
REV	REVISION DESCRIPTION	REV DATE
 300 N TAYLOR ROAD GARRETT, IN 46738 PHONE: (260) 357-3181 FAX: (260) 357-3738		
SALES ORDER		OVERALL TANK WEIGHT - LBS.
PRIMARY VESSEL	SPECIFIC GRAVITY - SP.G. MAX	SECONDARY VESSEL SPECIFIC GRAVITY - SP.G. MAX
RESIN USED	TANK WEIGHT - LBS.	RESIN USED
TANK WEIGHT	TANK COLOR	TANK WEIGHT
POLYETHYLENE	-	POLYETHYLENE
TITLE IMT 3050		DRAWN BY: D. CRAGER
DOUBLE WALL STORAGE TANK		DRAWN DATE: 12/29/97
-		DWG NUMBER: IMT 3050
ALL DIMENSIONS ARE IN INCHES AND ARE ±3%		REV: A



LIP DETAIL



LOWER FLAT SPOT DTL.



NOTES:

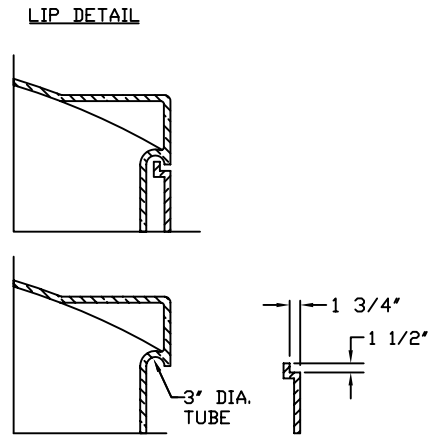
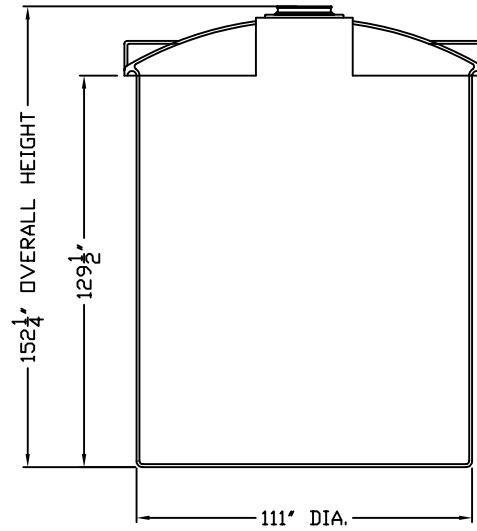
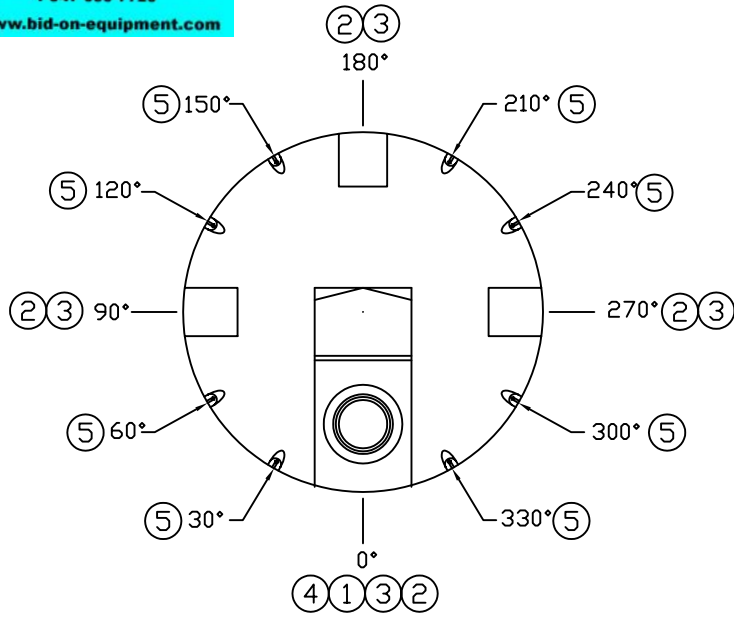
- 1 16\"/>
- 2 LOWER FLAT SPOT (4 PLACES)
- 3 18\"/>
- 4 32\"/>
- 5 LIFTING LUG ASSEMBLY (4 PLACES)

ACCESSORIES					
MK	SIZE	DESCRIPTION	DEG	ELEV	DOSE

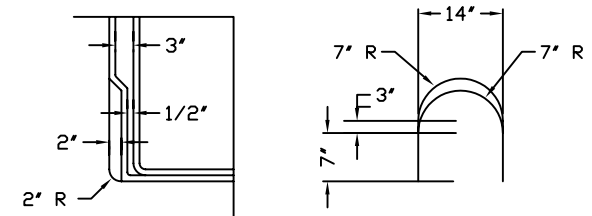
A	INSERTED A NEW TITLE BLOCK	06/12/08 MG
REV	REVISION DESCRIPTION	REV DATE

Aca Aormann CORPORATION OF AMERICA		300 N TAYLOR ROAD GARRETT, IN 46738 PHONE: (260) 357-3181 FAX: (260) 357-3738		SALES ORDER			
		OVERALL TANK WEIGHT		- LBS.			
PRIMARY VESSEL	SPECIFIC GRAVITY	-	SP.G. MAX	SECONDARY VESSEL	SPECIFIC GRAVITY	-	SP.G. MAX
RESIN USED	TANK WEIGHT	-	LBS.	RESIN USED	TANK WEIGHT	-	LBS.
-	POLYETHYLENE	TANK COLOR	-	-	POLYETHYLENE	TANK COLOR	-

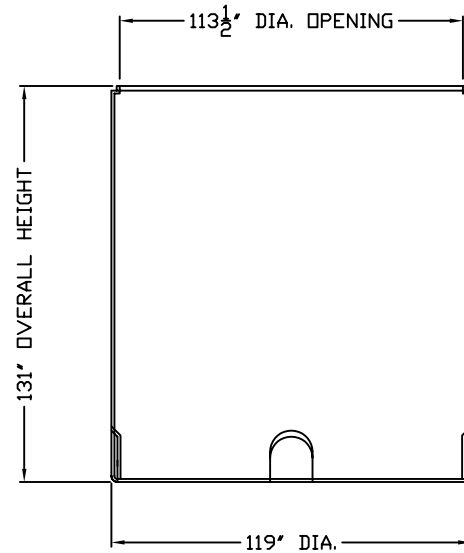
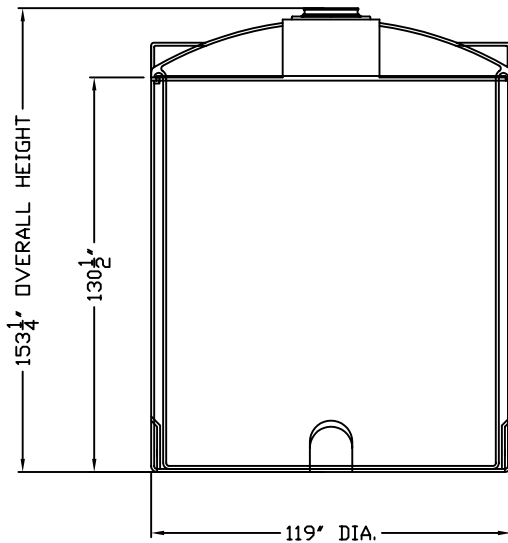
TITLE		DRAWN BY:		DRAWN DATE:	
IMT 4050		D. CRAGER		10/28/99	
DOUBLE WALL STORAGE TANK				DWG NUMBER:	
-				REV	
ALL DIMENSIONS ARE IN INCHES AND ARE ±3%				IMT 4050 A	




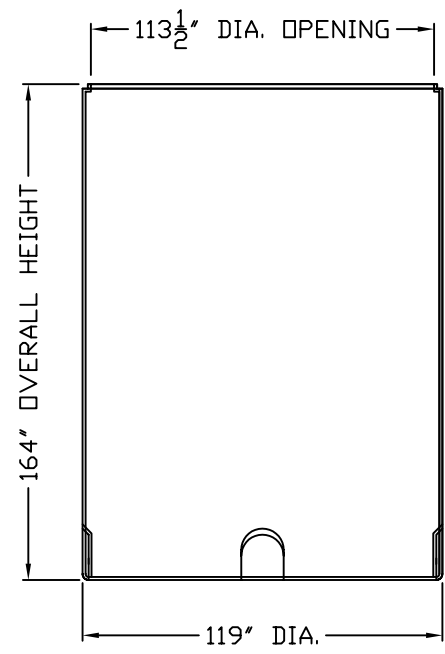
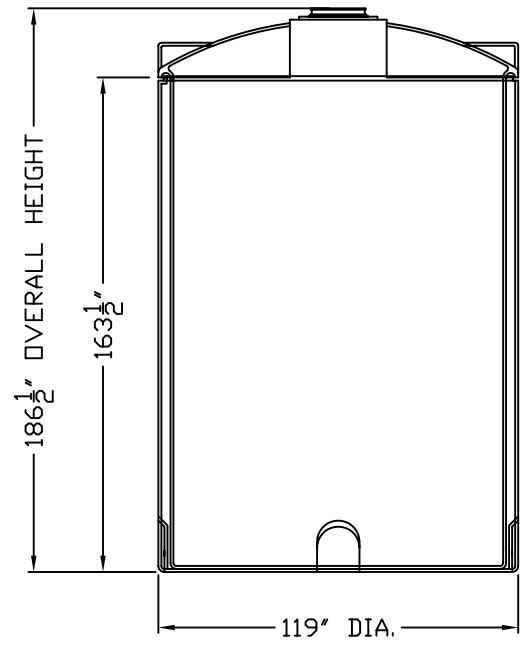
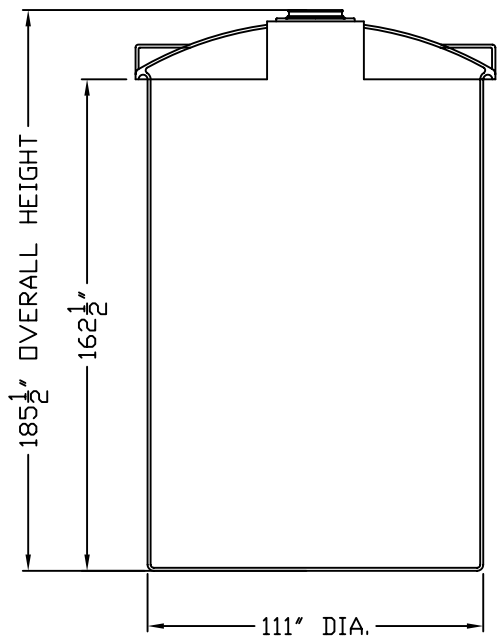
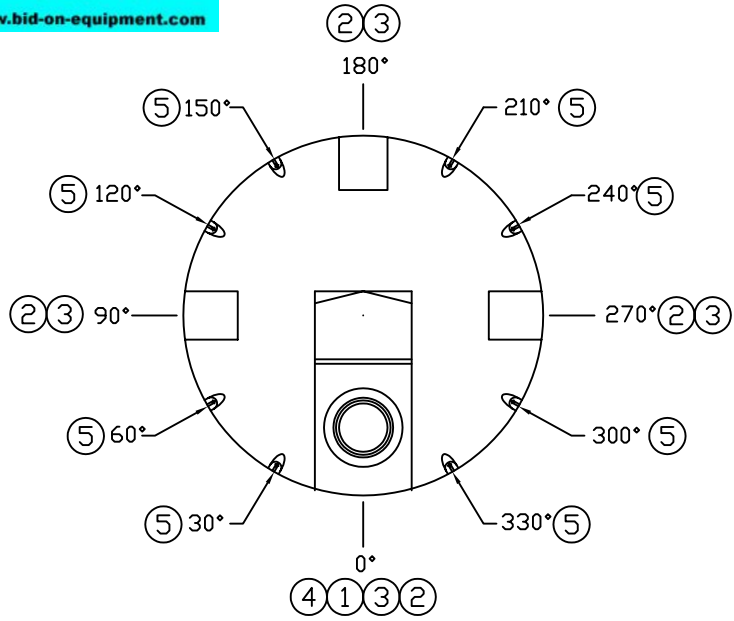
LOWER FLAT SPOT DTL.



- NOTES:
 1 16" LEVER LOCKING MANWAY
 2 LOWER FLAT SPOT (4 PLACES)
 3 18" X 18" DOME FLAT SPOTS (3 PLACES)
 4 32" X 52" MANWAY FLAT
 5 LIFTING LUG ASSEMBLY (8 PLACES)

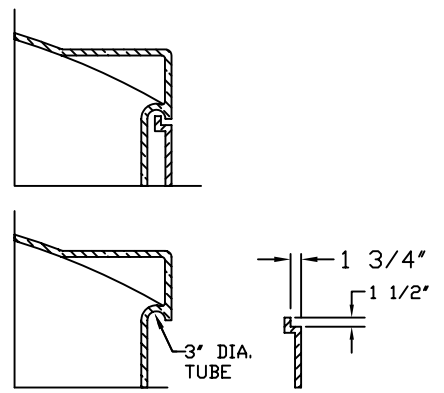


A	INSERTED A NEW TITLE BLOCK	06/12/08 MG
REV	REVISION DESCRIPTION	REV DATE
 300 N TAYLOR ROAD GARRETT, IN 46738 PHONE: (260) 357-3181 FAX: (260) 357-3738		SALES ORDER
PRIMARY VESSEL RESIN USED: POLYETHYLENE SPECIFIC GRAVITY: - TANK WEIGHT: - LBS. TANK COLOR: -		OVERALL TANK WEIGHT: - LBS. SECONDARY VESSEL RESIN USED: POLYETHYLENE SPECIFIC GRAVITY: - TANK WEIGHT: - LBS. TANK COLOR: -
TITLE: IMT 5250 DOUBLE WALL STORAGE TANK		DRAWN BY: D. CRAGER DRAWN DATE: 12/29/97 DWG NUMBER: IMT 5250 REV: A
ALL DIMENSIONS ARE IN INCHES AND ARE ±3%		

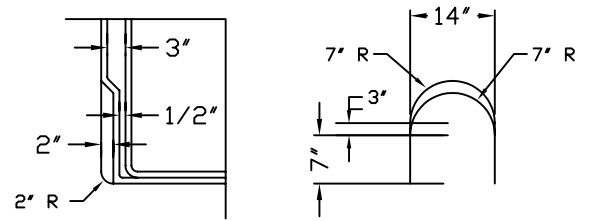


ACCESSORIES					
MK	SIZE	DESCRIPTION	DEG	ELEV	DOME

LIP DETAIL



LOWER FLAT SPOT DTL.



- NOTES:
 1 16" LEVER LOCKING MANWAY
 2 LOWER FLAT SPOT (4 PLACES)
 3 18" X 18" DOME FLAT SPOTS (3 PLACES)
 4 32" X 52" MANWAY FLAT
 5 LIFTING LUG ASSEMBLY (8 PLACES)

A	INSERTED A NEW TITLE BLOCK	06/12/08 MG
REV	REVISION DESCRIPTION	REV DATE

		300 N TAYLOR ROAD GARRETT, IN 46738 PHONE: (260) 357-3181 FAX: (260) 357-3738		SALES ORDER	
CORPORATION OF AMERICA				OVERALL TANK WEIGHT - LBS.	
PRIMARY VESSEL	SPECIFIC GRAVITY -	SP.G. MAX	SECONDARY VESSEL	SPECIFIC GRAVITY -	SP.G. MAX
RESIN USED:	TANK WEIGHT - LBS.		RESIN USED:	TANK WEIGHT - LBS.	
- POLYETHYLENE	TANK COLOR -		- POLYETHYLENE	TANK COLOR -	

TITLE		DRAWN BY:		DRAWN DATE:	
IMT 6550		D. CRAGER		9/15/97	
DOUBLE WALL STORAGE TANK		DWG NUMBER:		REV	
-		IMT 6550		A	
ALL DIMENSIONS ARE IN INCHES AND ARE ±3%					