

# Can Seaming & Manufacturing Machine



MODEL

**81L**



Rated Speed up to

**800 CPM**

- ▶ 8 Seaming Stations
- ▶ Variable Flow Gassing System (Optional)
- ▶ Pedestal Mounted Operator's Station
- ▶ Change Parts for one Can Size
- ▶ Driven Lower Lifter Oil Pump System
- ▶ Cover Feed Chute with Vibrator
- ▶ Second Operation Off-Seam Setting
- ▶ Free-Standing Stainless Steel Machine Enclosure with Door Interlocks & Sound Dampening Panels
- ▶ Automatic Stop Control System
- ▶ No Can/No Cover Sensor
- ▶ External Warning Safety Horn & Light



**Packaging - Processing**  
**Bid on Equipment**  
 1-847-683-7720  
[www.bid-on-equipment.com](http://www.bid-on-equipment.com)

## Standard Features



Automatic Oil Lubrication



Driven Lower Lifters



Automatic Seamer Washdown & Sterilization



Programmable Controller



Single Roll Cover Separator



Ceramic Seaming Roll Bearings



Tool Kit & Instruction Manual



Filler Belt Drive

## Optional Features



Under Cover Gassing



Steam Vacuum



Can Manufacturing



Motor Driven Machine Height



Touchscreen Control Panel



Filler Connecting Parts

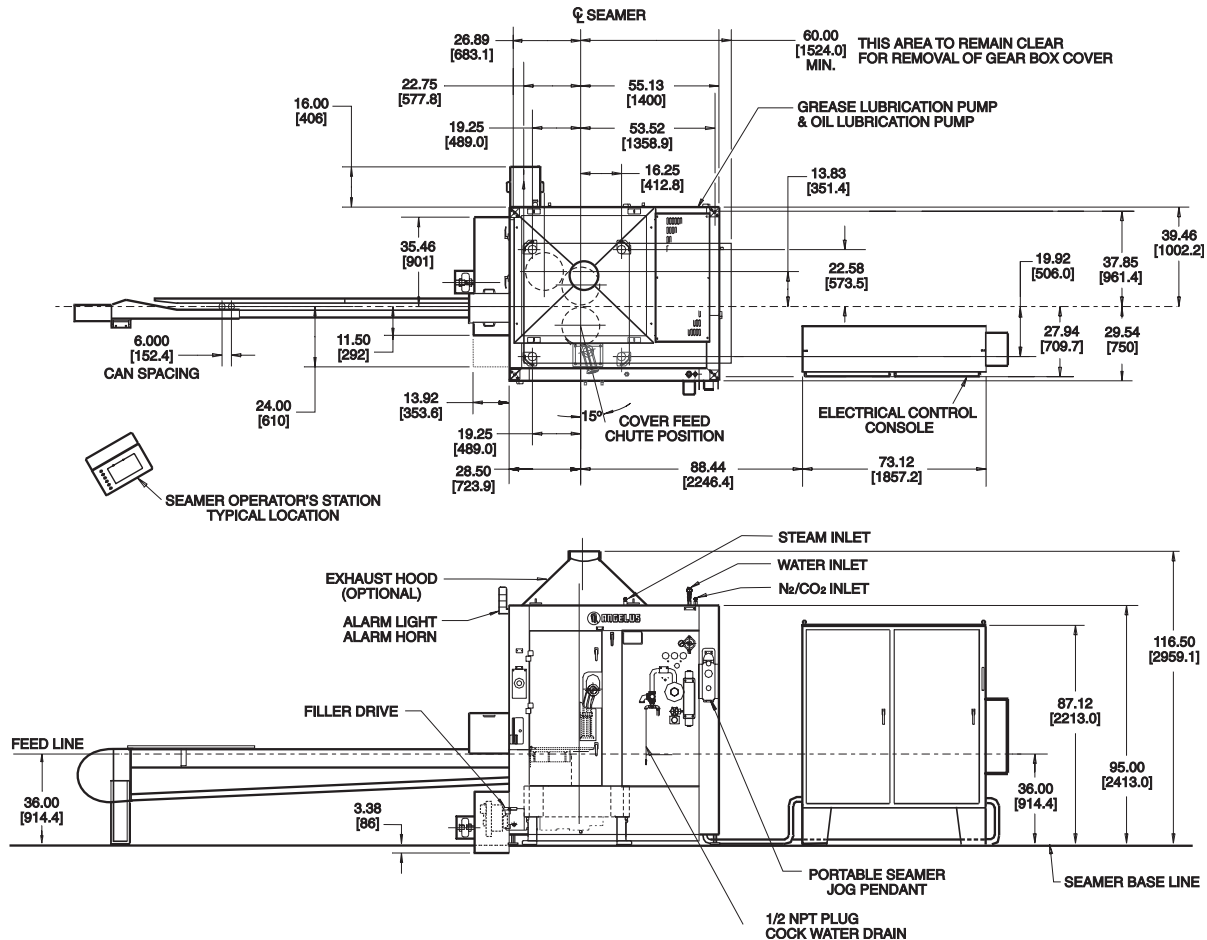


Nickel Plated Machine



Titanium Nitride-Coated Chromium Cobalt Seaming Rolls

No. of Seaming Stations	8	Nombre stations sertis..	Anz. Verschluss-Stat.	Num. de Cabezas de Doble Cierre	8
Output Speed Range	800 CPM	Gamme vitesse poss..	Mögl. Geschw. Bereich	Vol. de Producción	800 CPM
Min./Max. Can Diameter	200-404	Diam.boîte min./max.	Min./Max. Dosendurchm.	Diámetro Mín./Máx. del Envase	50.8-108.0mm
Min./Max. Can Height (CM & Atmos)	110-800	Hauteur boîte min./max. (Fabric. + Atmospher.)	Min./Max. Dosenhöhe (Dosenherst. + Atmosph.)	Altura Mín./Máx. del Envase (Mfg. - Atmosférico)	41.3-203.2mm
Min./Max. Can Height (Steam Vacuum)	113-800	Hauteur boîte min./max. (Inj.gaz CO <sup>2</sup> et vapeur)	Min./Max. Dosenhöhe (UCG + Bedampf.)	Altura Mín./Máx. del Envase (Vacio al Vapor - Opcional)	46.0-203.2mm
Min. Can Height (CM & Atmos - Optional)	105	Hauteur boîte min./max. (Fabric. + Atmosph. - Option.)	Min.Dosenhöhe (Herst. + Atm.-Option.)	Altura Mín. del Envase (Mfg. - Atmosférico - Opcional)	33.3mm
Min. Can Height (SV - Optional)	107	Hauteur boîte min./max. (Inj.gaz CO <sup>2</sup> & vapeur-Option.)	Min.Dosenhöhe (UCG. + Bedampf.-Opt.)	Altura Mín. del Envase (Vacio al Vapor - Opcional)	36.5mm
Transfer Chain Pitch Can Centers	6.000"	Pas de chaîne transfert (distance entre boîtes)	Dosentransferketten-Teilung	Centros de la Cadena de Transferencia	152.4mm
Filler Drive	1 Rev/Can	Commande emboîteuse	Füllerantrieb	Transmisión de Llenadora	1 Rev/Can
Horsepower/Electrical	25 Hp	Kw-Force élect.	Kw-Elektroleistung	Hp/Eléctrica	18 Kw
Electrical Controls	24 Volt DC	Commandes élect.	Elektrosteuerung	Control Eléctrico	24 Volt DC
Dry Air @ Base & Upper Turret Housing	3 psi	Air sèche @ Base & Boîtier Tourelle Supér.	Trockenluft @ Basis & Oberturmgehäuse	Aire Seco en la Base y Torreta Superior	0.2 bars
CO <sup>2</sup> /Nitrogen Gas Supply Pressure	125 psi @ 70°F	Pression Amen.Gaz CO <sup>2</sup> ou azote	CO <sup>2</sup> /Stickstoff Gas-zufuhrdruck	CO <sup>2</sup> /Suministro de Presión de Gas Nitrogeno	8.6 bars @ 21°C
CIP Cleaning - Hot Water	160°F @ 70 psi	Nettoy.CIP - eau chaude	CIP Rein.-Heisswas.	Limpieza con CIP - Agua Caliente	71°F @ 4.8 bars
CIP Cleaning - Steam	330°F @ 80 psi	Nettoy.CIP - vapeur	CIP Rein. - Dampf	Limpieza con CIP - Vapor	165°C @ 5.5 bars
Net Weight (Approx.)	14,400 lbs.	Poids net (Approx.)	Nettogewicht (ca.)	Peso Neto (Aprox.)	6532 Kg.
Gross Wieght (Approx.)	16,500 lbs.	Poids brut (Approx.)	Brutto-gewicht (ca.)	Peso Bruto (Aprox.)	7484 Kg.



**ANGELUS SANITARY CAN MACHINE COMPANY**  
 4900 PACIFIC BOULEVARD, LOS ANGELES, CA 90058 (323) 583-2171 FAX: (323) 587-5607  
 WEBSITE: www.angelusmachine.com E-MAIL: angelus@angelusmachine.com

**ANGELUS MACHINE CORPORATION INTERNATIONAL**  
 BELGIUM OFFICE: BELCROWNLAAN 44, B-2100 DEURNE, BELGIUM (32) 3 325.69.20 FAX: (32) 3 325.56.33  
 UK OFFICE: DE'SALIS DRIVE, HAMPTON LOVETT IND. EST., DROITWICH, WORCS. WR9 0QE, U.K. 44 (1905) 779602 FAX: 44 (1905) 771882

Packaging - Processing  
**Bid on Equipment**  
 1-847-683-7720  
 www.bid-on-equipment.com