

# Can Seaming & Manufacturing Machine



MODEL

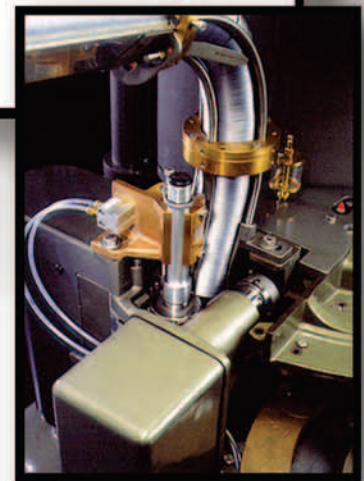
**40P**

Rated Speed up to

**275 CPM**

Photo May Show Optional Features

- ▶ Easy Maintenance and Operation
- ▶ No Can/No Cover Feed
- ▶ Reciprocating Cover Separator Knife
- ▶ Rotary Embossing Type Cover Marker
- ▶ Revolving 4-head Rotary Seaming Turret
- ▶ Wide Range of Accessories and Attachments
- ▶ Steam Vacuum Attachments
- ▶ Toppers or Packers
- ▶ Complete Change Parts, including Bronze and Stainless Steel
- ▶ Filler Drive with Safety Clutch
- ▶ Filler/Seamer Connections
- ▶ Variable Speed Motor Drive
- ▶ Electric Brake
- ▶ Cover Feed Chute with Vibrator



## Standard Features



Tool Kit & Instruction Manual



Head Spin Machine

## Optional Features



Single Roll Cover Separator



Can Manufacturing



Under Cover Gassing



Steam Vacuum



Magnetic Downstacker Chute with Vibrator

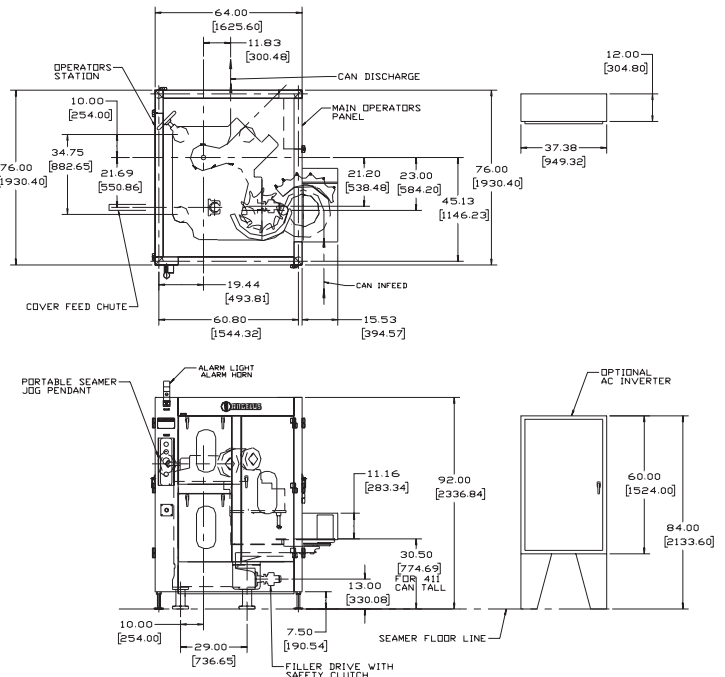
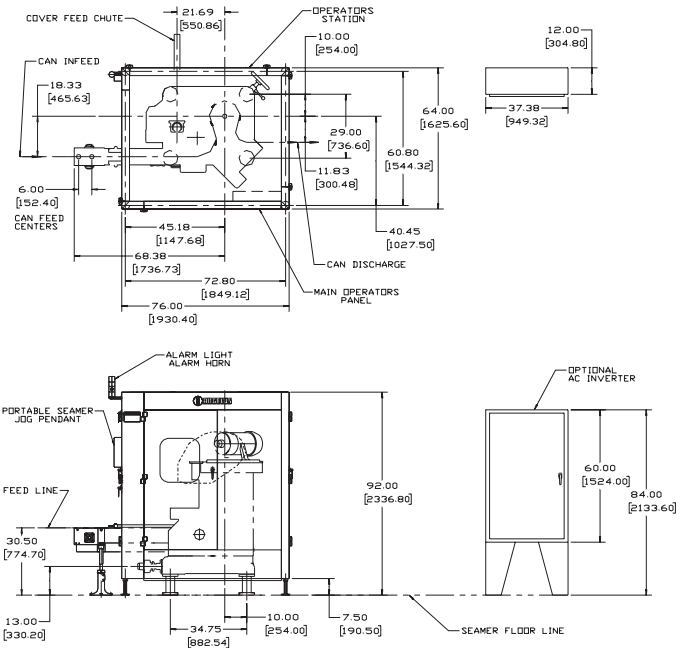


Mechanical Driven Machine Height

No. of Seaming Stations	4	Nombre stations serties.	Anz. Verschliess-Stat.	Num. de Cabezas de Doble Cierre	4
Output Speed Range	20-275 CPM	Gamme vitesse poss.	Mögl. Geschw. Bereich	Vol. De Producción	20-275 CPM
Min./Max. Can Diameter	202-404	Diam.boîte min./max.	Min./Max. Dosendurchm.	Diámetro Mín./Máx. del Envase	54.0mm-108.0mm
Min./Max. Can Diameter (Optional)	108-404	Diam.boîte min./max. (Option.)	Min./Max. Dosendurchm. (Option.)	Diámetro Mín./Máx. del Envase (Opcional)	38.1mm-108.0mm
Min./Max. Can Height MSLF (Optional)	108-700	Hauteur boîte min./max. MSLF (Option.)	Min./Max. Dosenhöhe MSLF (Option.)	Altura Mín./Máx. del Envase MSLF (Opcional)	38.1mm-177.8mm
MSLF (SV & UCG)	108-812	MSLF (inj.gaz CO <sup>2</sup> et vapeur)	MSLF (UCG + Bedampf.)	MSLF (Can Disp. para Gas. y Vacío al Vapor)	38.1mm-222.3mm
DF (Optional)	111-700	DF (Option.)	DF (Option.)	DF (Opcional)	42.9mm-177.8mm
DF (SV & UCG)	108-1000	DF (inj.gaz CO <sup>2</sup> et vapeur)	DF (UCG + Bedampf.)	DF (Can Disp. para Gas. y Vacío al Vapor)	38.1mm-254.0mm
DF (Optional)	111-700	DF (Option.)	DF (Option.)	DF (Opcional)	42.9mm-177.8mm
Transfer Chain Pitch Can Centers (MSLF)	6.000	Pas de chaîne transfert (distance entre boîtes-MSLF)	Dosentransferketten-Teilung (MSLF)	Centros de la Cadena de Transferencia (MSLF)	152.4mm
Transfer Chain Pitch Can Centers (DF)	Random	Pas de chaîne transfert (distance entre boîtes-DF)	Dosentransferketten-Teilung (DF)	Centros de la Cadena de Transferencia (DF)	Random
Horsepower/Electrical	5 Hp	Kw-Force élect.	Kw-Elektroleistung	Hp/Eléctrica	4 Kw
Electrical Controls	24 Volt DC	Commandes élect.	Elektrosteuerung	Control Eléctrico	24 Volt DC
CO <sup>2</sup> /Nitrogen Gas Supply Pressure	100psi @ 70°F	Pression Amen.Gaz CO <sup>2</sup> ou azote	CO <sup>2</sup> /Stickstoff Gaszufuhrdruck	CO <sup>2</sup> /Suministro de Presión de Gas Nitrogeno	6.9 bars @ 21°C
Steam Supply	330°F @ 85psi	Provision de vapeur	Dämpfen Sie Versorgung	El Suministro del Vapor	165°C @ 5.9 bars
Net Weight MSLF (Approx.)	5,900 lbs	Poids net MSLF (Approx.)	Nettogewicht MSLF (ca.)	Peso Neto MSLF (Aprox.)	2,676 Kg
Gross Weight Domestic MSLF (Approx.)	6,900 lbs	Poids Brut - (Transport intérieur) MSLF (Approx.)	Bruttogewicht (Inland Verkehr) MSLF (ca.)	Peso Bruto (Doméstico) MSLF (Approx.)	3,130 Kg
Gross Weight Export MSLF (Approx.)	7,300 lbs	Poids Brut - (Exportation) MSLF (Approx.)	Bruttogewicht (Export) MSLF (ca.)	Peso Bruto (Exportación) MSLF (Approx.)	3,311 Kg
Net Weight DF (Approx.)	5,700 lbs	Poids Net DF (Approx.)	Nettogewicht DF (ca.)	Peso Neto DF (Aprox.)	2,586 Kg
Gross Weight Domestic DF (Approx.)	6,700 lbs	Poids Brut - (Transport intérieur) DF (Approx.)	Bruttogewicht (Inland Verkehr) DF (ca.)	Peso Bruto (Doméstico) DF (Approx.)	3,039 Kg
Gross Weight Export DF (Approx.)	7,100 lbs	Poids Brut - (Exportation) DF (Approx.)	Bruttogewicht - Export DF (ca.)	Peso Bruto (Exportación) DF (Approx.)	3,221 Kg

## MSLF

## DF



**ANGELUS SANITARY CAN MACHINE COMPANY**  
 4900 PACIFIC BOULEVARD, LOS ANGELES, CA 90058 (323) 583-2171 FAX: (323) 587-5607  
 WEBSITE: www.angelusmachine.com E-MAIL: angelus@angelusmachine.com

**ANGELUS MACHINE CORPORATION INTERNATIONAL**  
 BELGIUM OFFICE: BELCROWNLAAN 44, B-2100 DEURNE, BELGIUM (32) 3 325.69.20 FAX: (32) 3 325.56.33

UK OFFICE: DE'SALIS DRIVE, HAMPTON LOVETT IND. EST., DROITWICH, WORCS. WR9 0QE, U.K. 44 (0) 1905 779602 FAX: 44 (0) 1905 771882

**Packaging - Processing**  
**Bid on Equipment**  
 1-847-683-7720  
 www.bid-on-equipment.com