

Can Seaming & Manufacturing Machine



- ▶ 18 Seaming Stations
- ▶ Under Cover Gassing Attachment and Change Parts for One Can Size
- ▶ Driven Lower Lifter Oil Pump System
- ▶ Second Operation Off-Seam Setting
- ▶ Enclosed Base Gearing
- ▶ No Can/ No Gas/ No Run Sensor
- ▶ Two-Speed CO² Gassing Controls
- ▶ External Warning Safety Horn & Light



Standard Features



Automatic Oil Lubrication



Driven Lower Lifters



Automatic Washdown & Sterilization



Programmable Controller



Titanium Nitride-Coated Chromium Cobalt Seaming Rolls



Ceramic Seaming Roll Bearings



Tool Kit & Instruction Manual



Filler Belt Drive



Variable Flow Gassing Control



Touchscreen Control Panel



Filler Connecting Parts



Dual Single Roll Cover Separator

Optional Features



Steam Vacuum



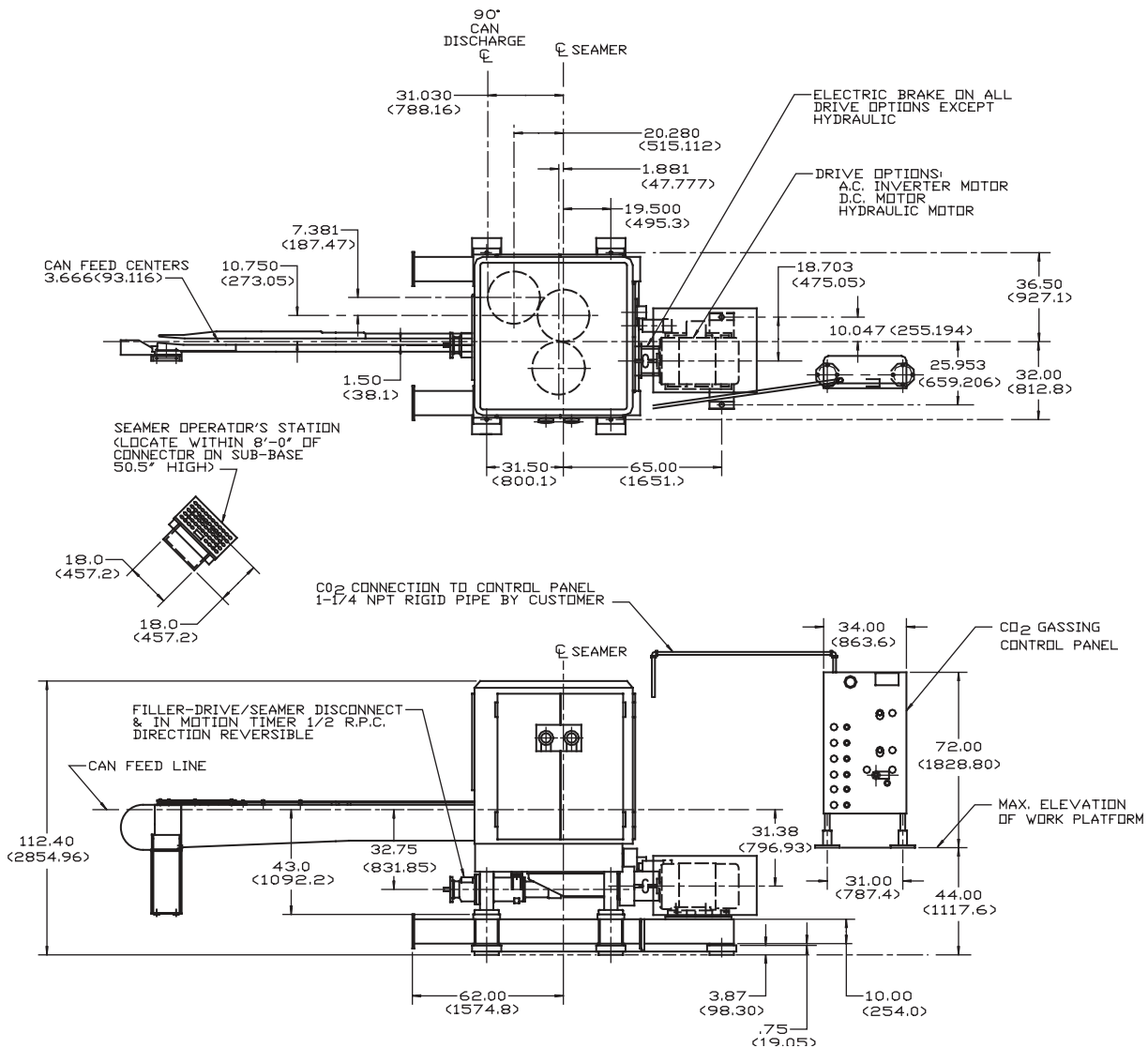
Automatic Grease Lubrication 1st/2nd Op. Seaming Rolls



Motor Driven Machine Height

Technical Specifications

No. of Seaming Stations	18	Nombre stations sertis.	Anz. Verschluss-Stat.	Num. de Cabezas de Doble Cierre	18
Output Speed Range	140-3000 CPM	Gamme vitesse poss.	Mögl. Geschw. Bereich	Vol. De Producción	140-3000 CPM
Min./Max. Can Diameter	200-211	Diam.boîte min./max.	Min./Max. Dosendurchm.	Diámetro Mín./Máx. del Envase	50.8mm-68.3mm
Min./Max. Can Height	206-700	Hauteur boîte min./max.	Min./Max. Dosenhöhe	Altura Mín./Máx. del Envase	60.3mm-177.8mm
Transfer Chain Pitch Can Centers	3.666"	Pas de chaîne transfert (distance entre boîtes)	Dosentransferketten-Teilung	Centros de la Cadena de Transferencia	93.1 mm
Filler Drive	0.5 Rev/Can	Commande emboîteuse	Füllerantrieb	Transmisión de Llenadora	Direction Reversible
Horsepower/Electrical	60 Hp	Kw-Force électr.	Kw-Elektroleistung	Hp/Eléctrica	45 Kw
Electrical Controls	24 Volt DC	Commandes électr.	Elektrosteuerung	Control Eléctrico	24 Volt Dc
Dry Air @ Base & Upper Turret Housing	3psi	Air sèche @ Base & Boîtier Tourelle Supér.	Trockenluft @ Basis & Oberturmgehäuse	Aire Seco en la Base y Torreta Superior	0.2 bars
CO ² /Nitrogen Gas Supply Pressure	100psi @ 70°F	Pression Amen. Gaz CO ² ou azote	CO ² /Stickstoff Gaszufuhrdruck	CO ² /Suministro de Presión de Gas Nitrogeno	6.9 bars @ 21°C
CIP Cleaning – Hot Water	160°F @ 70psi	Nettoy.CIP – eau chaude	CIP Rein. – Heisswas.	Limpieza con CIP – Agua Caliente	71°C @ 4.8 bars
Steam Supply	330°F @ 85psi	Provision de Vapeur	Dämpfen Sie Versorgung	El Suministro del Vapor	165°C @ 5.9 bars
Net Weight (Approx.)	26,700 lbs	Poids net (Approx.)	Nettogewicht (ca.)	Peso Neto (Aprox.)	12,111 Kg
Gross Weight Domestic (Approx.)	32,000 lbs	Poids Brut - Transport intérieur (Approx.)	Bruttogewicht - Inland Verkehr (ca.)	Peso Bruto - Doméstico (Approx.)	14,515 Kg
Gross Weight Export (Approx.)	40,000 lbs	Poids Brut - Exportation (Approx.)	Bruttogewicht - Export (ca.)	Peso Bruto - Exportación (Approx.)	18,144 Kg



ANGELUS SANITARY CAN MACHINE COMPANY
 4900 PACIFIC BOULEVARD, LOS ANGELES, CA 90058 (323) 583-2171 FAX: (323) 587-5607
 WEBSITE: www.angelusmachine.com E-MAIL: angelus@angelusmachine.com

ANGELUS MACHINE CORPORATION INTERNATIONAL
 BELGIUM OFFICE: BELCROWNLAAN 44, B-2100 DEURNE, BELGIUM (32) 3 325.69.20 FAX: (32) 3 325.56.33
 UK OFFICE: DE'SALIS DRIVE, HAMPTON LOVETT IND. EST., DROITWICH, WORCS. WR9 0QE, U.K. 44 (0) 1905 779602 FAX: 44 (0) 1905 771882

Packaging - Processing
Bid on Equipment
 1-847-683-7720
 www.bid-on-equipment.com