

# Can Seaming & Manufacturing Machine



**MODEL**  
**12M**

Rated Speed up to  
**1800 CPM**

- ▶ 12 Seaming Stations for Beer & Beverage Applications
- ▶ Change Parts for One Can Size
- ▶ Can Centers Compatible with Newest Fillers
- ▶ Automatic Oil Lubrication & Filtration System
- ▶ Second Operation Off-Seam Setting
- ▶ Free-Standing Stainless Steel Machine Enclosure with Door Interlocks and Internal Lighting
- ▶ Reduced Complexity of Changeovers
- ▶ Pneumatic No Can/No Cover
- ▶ All Metric Fasteners



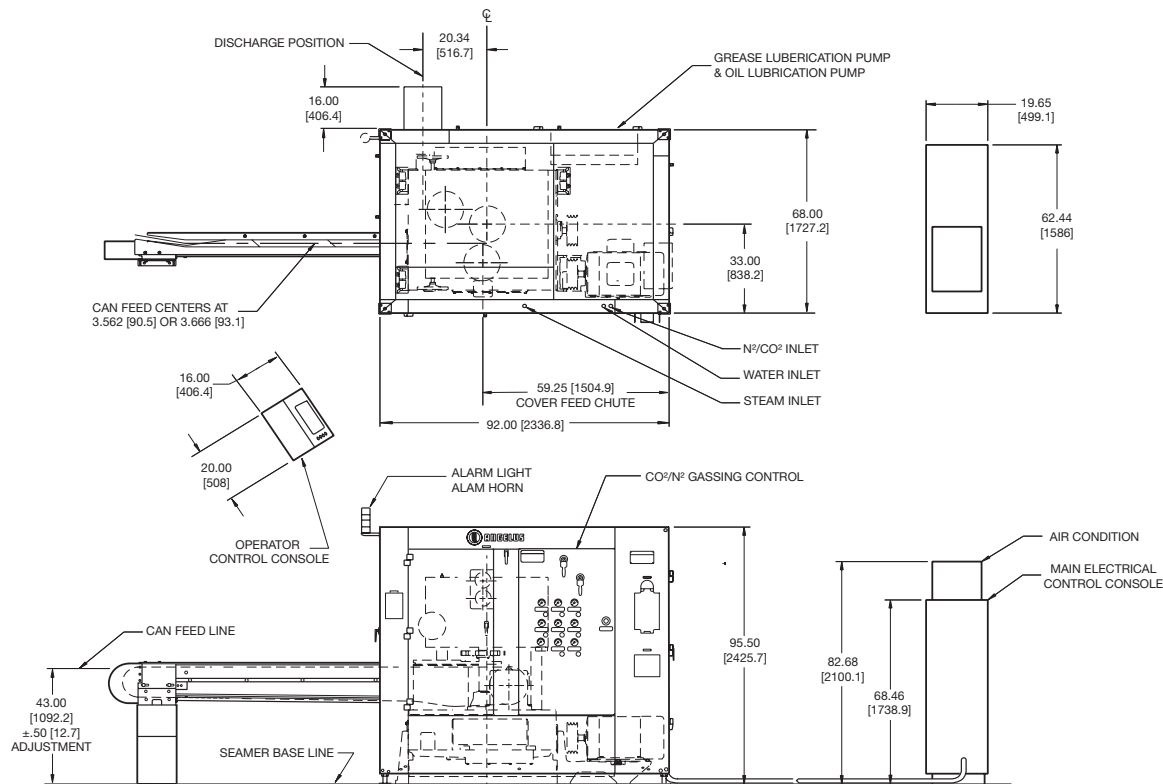
## Standard Features

Variable Flow Gassing Control	Automatic Oil Lubrication	Automatic Washdown & Sterilization	Driven Lower Lifters	Tool Kit & Instruction Manual	Touchscreen Control Panel
Ceramic Seaming Roll Bearings	Filler Connecting Parts	PC Based Control Software	Servo Driven Cover Separator	Aluminum to Steel Quickset Seam Adjustment	Stainless Steel Castings
TN Coated Chromium Cobalt Seaming Chucks	Sealed TN Coated Chromium Cobalt Seaming Rolls	Oil Cooled Seaming Turret			

## Optional Features

Motor Driven Machine Height	Filler Belt Drive	Steam Vacuum
Programmable Controller	Can Manufacturing	

No. of Seaming Stations	12	Nombre stations sertis.	Anz. Verschluss-Stat.	Num. de Cabezas de Doble Cierre	12
Output Speed Range	400-1800 CPM	Gamme vitesse poss.	Mögl.Geschw.Bereich	Vol. De Producción	400-1800 CPM
Min./Max. Can Diameter	200-211	Diam.boîte min./max.	Min./Max. Dosendurchm.	Diámetro Mín./Máx. del Envase	50.8mm-68.3mm
Min./Max. Can Height (Atmos)	110-800	Hauteur boîte min./max. (Atmosph.)	Min./Max. Dosenhöhe (Atmosph.)	Altura Mín./Máx. del Envase (Atmosférico)	41.3mm-203.2mm
Min./Max. Can Height (UCG & SV)	113-800	Hauteur boîte min./max. (Inj.gaz CO <sup>2</sup> et vapeur)	Min./Max. Dosenhöhe (UCG + Bedampf.)	Altura Mín./Máx. del Envase (Con Dispositivo para Gasificación y Vacío al Vapor)	46.0mm-203.2mm
Min. Can Height (Atmos - Optional)	105	Hauteur boîte min./max. (Atmosph. - Option.)	Min. Dosenhöhe (Atmosph. - Option.)	Altura Mín. del Envase (Atmosférico - Opcional)	33.3mm
Min. Can Height (UCG & SV - Optional)	108	Hauteur boîte min./max. (Inj.gaz CO <sup>2</sup> et vapeur - Option.)	Min.Dosenhöhe (UCG. + Bedampf. - Opt.)	Altura Mín. del Envase (Con Dispositivo para Gasificación y Vacío al Vapor - Opcional)	38.1mm
Transfer Chain Pitch Can Centers	3.562" or 3.666"	Pas de chaîne transfert (distance entre boîtes)	Dosentransferketten-Teilung	Centros de la Cadena de Transferencia	90.48mm or 93.1mm
Servo Filler Drive	Standard	Servo-commande remplisseuse	Servo-Füllerantrieb	La Campana de la Masilla de Servo	Standard
Mechanical Filler Drive (Optional)	0.5 Rev/Can	Commande mécanique remplisseuse (Option.)	Mechanischer Füllerantrieb (Optional)	La Campana Mecánica de la Masilla	0.5 Rev/Can
Horsepower/Electrical	25-50 Hp	Kw-Force élect.	Kw-Elektroleistung	Hp/Eléctrica	18-38 Kw
Electrical Controls	24 Volt DC	Commandes élect.	Elektrosteuerung	Control Eléctrico	24 Volt Dc
Dry Air @ Base & Upper Turret Housing	6psi @ gauge	Air sèche @ Base & Boîtier Tourelle Supér.	Trockenluft @ Basis & Oberturmgehäuse	Aire Seco en la Base y Torreta Superior	0.4 bars @ gauge
CO <sup>2</sup> /Nitrogen Gas Supply Pressure	100psi @ 70°F	Pression Amen.Gaz CO <sup>2</sup> ou azote	CO <sup>2</sup> /Stickstoff Gaszufuhrdruck	CO <sup>2</sup> /Suministro de Presión de Gas Nitrogeno	6.9 bars @ 21°C
CIP Cleaning - Hot Water	160°F @ 70psi	Nettoy.CIP - eau chaude	CIP Rein. - Heisswas.	Limpieza con CIP - Agua Caliente	71°C @ 4.8 bars
CIP Cleaning - Steam	330°F @ 80psi	Nettoy.CIP - vapeur	CIP Rein. - Dampf	Limpieza con CIP - Vapor	165°C @ 5.5 bars
Net Weight (Approx.)	14,900 lbs	Poids net (Approx.)	Nettogewicht (ca.)	Peso Neto (Aprox.)	6,759 Kg
Gross Weight Domestic (Approx.)	16,900 lbs	Poids Brut - Transport intérieur (Approx.)	Bruttogewicht - Inland Verkehr (ca.)	Peso Bruto - Doméstico (Approx.)	7,666 Kg
Gross Weight Export (Approx.)	19,450 lbs	Poids Brut - Exportation (Approx.)	Bruttogewicht - Export (ca.)	Peso Bruto - Exportación (Approx.)	8,823 Kg



**ANGELUS SANITARY CAN MACHINE COMPANY**  
 4900 PACIFIC BOULEVARD, LOS ANGELES, CA 90058 (323) 583-2171 FAX: (323) 587-5607  
 WEBSITE: www.angelusmachine.com E-MAIL: angelus@angelusmachine.com

**ANGELUS MACHINE CORPORATION INTERNATIONAL**  
 BELGIUM OFFICE: BELCROWNLAAN 44, B-2100 DEURNE, BELGIUM +32 3 327 3140 FAX: +32 3 325 5633  
 UK OFFICE: DE'SALIS DRIVE, HAMPTON LOVETT IND. EST., DROITWICH, WORCS. WR9 0QE, U.K. 44 (0) 1905 779602 FAX: 44 (0) 1905 771882

**Packaging - Processing**  
**Bid on Equipment**  
 1-847-683-7720  
 www.bid-on-equipment.com