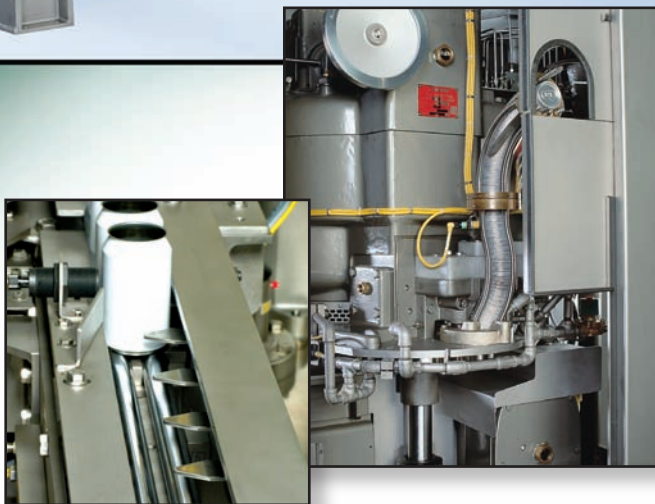




MODEL I21L Can Seaming & Manufacturing Machine

Rated Speed
up to 1600 CPM



- ▶ 12 Seaming Stations
- ▶ Variable Flow Gassing System (Optional)
- ▶ Pedestal Mounted Operator's Station
- ▶ Change Parts for one Can Size
- ▶ Driven Lower Lifter Oil Pump System
- ▶ Cover Feed Chute with Vibrator
- ▶ Second Operation Off-Seam Setting
- ▶ Free-Standing Stainless Steel Machine Enclosure with Door Interlocks & Sound Dampening Panels
- ▶ Automatic Stop Control System
- ▶ No Can/No Cover Sensor
- ▶ External Warning Safety Horn & Light
- ▶ Stainless Steel Base Top Plate
- ▶ Adjustable Round Bar Can Transfer Table

Standard Features



Automatic Oil Lubrication



Driven Lower Lifters



Automatic Seamer Washdown & Sterilization



Programmable Controller PLC



Single Roll Cover Separator



Titanium Nitride Coated Chromium Cobalt Seaming Rolls



Ceramic Seaming Roll Bearings



Tool Kit & Instruction Manual



Power Lid Gapper



UL Rated 24 Volt DC Electrical Controls



Filler Belt Drive



Color Touchscreen Control Panel

Optional Features



Under Cover Gassing



Steam Vacuum



Can Manufacturing



Motorized Height Adjustment



Filler Connecting Parts



Nickel Plated Machine

Packaging - Processing

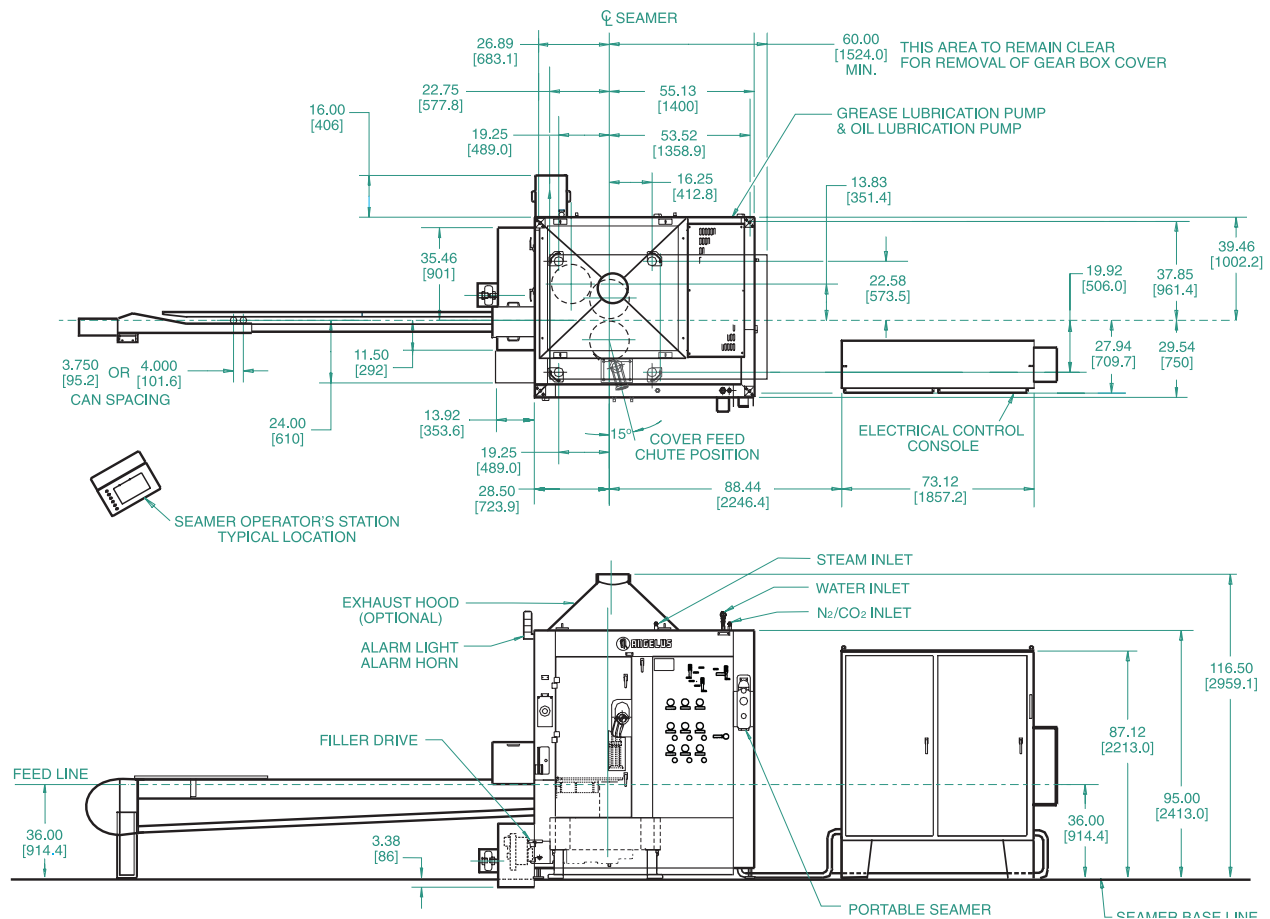
Bid on Equipment

1-847-683-7720

www.bid-on-equipment.com

MODEL 121L Technical Specifications

| No. of Seaming Stations | 12 | Nombre stations sertis. | Anz. Verschluss-Stat. | Num. de Cabezas de Doble Cierre | 12 |
|---|------------------|--|--|--|------------------|
| Output Speed Range | 400-1600 CPM | Gamme vitesse poss. | Mögl. Geschw. Bereich | Vol. de Producción | 400-1600 CPM |
| Min./Max. Can Diameter | 200-303 | Diam. boîte min./max. | Min./Max. Dosendurchm. | Diámetro Mín./Máx. del Envase | 50.8-81.0mm |
| Min./Max. Can Height (CM & Atmos) | 110-800 | Hauteur boîte min./max. (Fabric. + Atmospher.) | Min./Max. Dosenhöhe (Dosenherst. + Atmosph.) | Altura Mín./Máx. del Envase (Mfg. - Atmosférico) | 41.3-203.2mm |
| Min./Max. Can Height (UCG & SV) | 113-800 | Hauteur boîte min./max. (Inj.gaz CO ₂ et vapeur) | Min./Max. Dosenhöhe (UCG + Bedampf.) | Altura Mín./Máx. del Envase (Con Dispositivo para Gasificación y Vacío al Vapor) | 46.0-203.2mm |
| Min. Can Height (CM & Atmos - Optional) | 105 | Hauteur boîte min./max. (Fabric. + Atmospher. - Option.) | Min. Dosenhöhe (Herst. + Atm. - Option.) | Altura Mín. del Envase (Mfg. - Atmosférico - Opcional) | 33.3mm |
| Min. Can Height (UCG & SV - Optional) | 107 | Hauteur boîte min./max. (Inj.gaz CO ₂ & vapeur - Option.) | Min. Dosenhöhe (UCG + Bedampf. - Opt.) | Altura Mín. del Envase (Con Dispositivo para Gasificación y Vacío al Vapor - Opcional) | 36.5mm |
| Transfer Chain Pitch Can Centers | 3.750" or 4.000" | Pas de chaîne transfert (distance entre boîtes) | Dosentransferketten-Teilung | Centros de la Cadena de Transferencia | 95.3 or 101.6mm |
| Filler Drive | 0.5 Rev/Can | Commande emboîteuse | Füllerantrieb | Transmisión de Llenadora | 0.5 Rev./Can |
| Horsepower/Electrical | 25-40 Hp | Kw-Force élect. | Kw-Elektroleistung | Hp/Eléctrica | 18-30Kw |
| Electrical Controls | 24 Volt DC | Commandes élect. | Elektrosteuerung | Control Eléctrico | 24 Volt DC |
| Dry Air @ Base & Upper Turret Housing | 3 psi | Air sèche @ Base & Boîtier Tourelle Supér. | Trockenluft @ Basis & Oberturmgehäuse | Aire Seco en la Base y Torreta Superior | 0.2 bars |
| CO ₂ /Nitrogen Gas Supply Pressure | 125 psi @ 70°F | Pression Amen. Gaz CO ₂ ou azote | CO ₂ /Stickstoff Gas-zufuhrdruck | CO ₂ /Suministro de Presión de Gas Nitrogeno | 8.6 bars @ 21°C |
| CIP Cleaning - Hot Water | 160°F @ 70 psi | Nettoy.CIP - eau chaude | CIP Rein.-Heisswas. | Limpieza con CIP - Agua Caliente | 71°C @ 4.8 bars |
| CIP Cleaning - Steam | 330°F @ 80 psi | Nettoy.CIP - vapeur | CIP Rein.- Dampf | Limpieza con CIP - Vapor | 165°C @ 5.5 bars |
| Net Weight (Approx.) | 14,400 lbs. | Poids net (approx.) | Nettogewicht (ca.) | Peso Neto (Aprox.) | 6532 Kg |
| Gross Weight (Approx.) | 16,500 lbs. | Poids brut (Approx.) | Bruttogewicht (ca.) | Peso Bruto (Aprox.) | 7484 Kg. |



ANGELUS SANITARY CAN MACHINE COMPANY
 LOS ANGELES, CALIFORNIA (323) 583-2171 FAX: (323) 587-5607
 WEBSITE: www.angelusmachine.com E-MAIL: angelus@angelusmachine.com

ANGELUS MACHINE CORPORATION INTERNATIONAL
 BELGIUM OFFICE: DEURNE, BELGIUM +32 3 327 3140 FAX: +32 3 325 5633 E-MAIL: sales@angelusmachine.be
 UK OFFICE: DROITWICH, WORCESTER, U.K. +44 (0) 1905 779602 FAX: +44 (0) 1905 771882 E-MAIL: sales@angelus-machine.co.uk

Packaging - Processing
Bid on Equipment
 1-847-683-7720
 www.bid-on-equipment.com