

AMF

SABER 75 BAND SLICER



- **Precision, High Quality Bread Slicing on a Wide Variety of Loaves**
- **Efficient Design With Minimal Parts Count for Reduced Maintenance**
- **High Quality Stainless Steel Frame and Guard Design**

SABER 75 BAND SLICER

MECHANICAL FEATURES

Frame and Guarding

- Corrosion resistant stainless steel frame and guards

Main Drive and Drums

- Quiet and maintenance free belt drive system
- 5 HP motor and control starter with electric motor brake
- Conventional oiler on blade drums
- Scraper on lower blade drum
- Broken blade detector on drums
- Standard closed welded mild steel drums
- Cantilever drum design for easy blade replacement

Blade Spacing Mechanism

- Hansaloy stainless steel lattice 3/8" (10mm) to 5/8" (16mm) slice width range
- Offset or 4-prong blade guides

- Conventional air blast lattice cleaning
- Lattice pull out system

Conveyors

- Pusher/flighted type infeed conveyor
- Loaf centering device
- Product accumulation sensor
- Last loaf pusher
- Infeed hold down
- Stainless steel flighted discharge conveyor with extended guide handles for increased safety
- Stainless steel drive guard rails
- Self-driven, low maintenance discharge conveyor
- Discharge conveyor electronically synchronized to bagger for universal hook-up
- Hook-up plates to match any type of bagger
- Discharge conveyor loaf hold down



Flight Pusher Infeed Conveyor



Heavy Duty Stainless Steel Lattice



Extended Discharge Conveyor Guide Rails



Cantilever Drum Design for Easy Blade Removal & Replacement

ELECTRICAL FEATURES

NEMA 12 painted steel operator panel contains the following:

- PanelView 300 keypad operator interface which displays:
 - Online timing adjustments
 - Status messages
 - Precise alarm messages
 - Loaf counter
 - Speed indicator
 - Alarm history screen
- Alarm beacon
- Allen Bradley push-buttons for the following functions:
 - Conveyors start
 - Conveyors stop
 - Blades start
 - Blades stop
 - Alarm (acknowledge/reset)
 - Emergency stop

NEMA 12 machine mounted painted steel electrical enclosure including:

- Main disconnect switch
- Allen Bradley AC inverters
- Incremental encoders for electronic timing to bagger
- Allen Bradley Micrologix 1500 modular hardware programmable logic controller

Discharge conveyor overload device

Automatic double loaf eliminator

Electronic synchronization capable

CAT3 safety guarding

Electric motor brake



Operator Panel



MECHANICAL OPTIONS

- Continuous feed, high friction, infeed conveyor with motorized bottom and side guides for positive transfer, smooth operation and low maintenance
- Gas assisted hinged front cover
- Lattice cleaning hoses connected to a manifold block with four separate "manual" ball valves
- "Fully automatic" lattice cleaning system in lieu of conventional air blast
- Special Hansaloy stainless steel lattice with offset type blade guides for slicing ranges of 3/4" (19mm), to 7/8" (22mm), to 1" (25mm)
- Ceramic insert offset blade guides in lieu of standard
- Automatic slice thickness adjuster with digital readout & setpoint
- Self-supporting, single person operated lattice pull-out mechanism
- Automatic hone assembly
- Hard chromed blade backing rollers
- Automatic lower blade drum oil sprayer in lieu of conventional oiler
- Hard chromed blade drums (900 Vickers chrome hardness)
- Skip loaf device
- Crumb blower
- Stainless steel crumb collection slide
- Wash down design including stainless steel drums & water spray



Gas Assisted Hinged Front Cover



Self-Supporting Lattice Pull-out Mechanism



Automatic Hone Assembly



Automatic Slice Thickness Adjuster



Stainless Steel Crumb Collection Slide



Continuous Feed Infeed Option

ELECTRICAL OPTIONS

- Internal lighting kit approved for food industry applications
- Inverter in lieu of Allen Bradley
- NEMA 12 stainless steel electrical enclosure & operator console
- A-B SLC 500 modular hardware programmable logic controller in lieu of Micrologix 1500
- A-B PanelView 550, 600 or 600+ touchscreen operator interface in lieu of A-B PanelView 300



Internal Lighting Kit

SPECIFICATIONS

Throughput Range:
 35 to 75 loaves per minute

Electrical Requirements:
 Main Power - 5 KVA
 PLC I/O Voltage: 24VDC in/120VAC out
 Air Requirements - 5 SCFM @ 80 PSIG

Loaf Size Range:
 Length: 8" (203 mm) to 16" (406 mm)
 Width: 3 5/8" (92 mm) to 5 1/2" (140 mm)
 Height: 3" (76 mm) to 6" (152 mm)

Approximate Shipping Weight:
 2,050 lb. (930 kg)

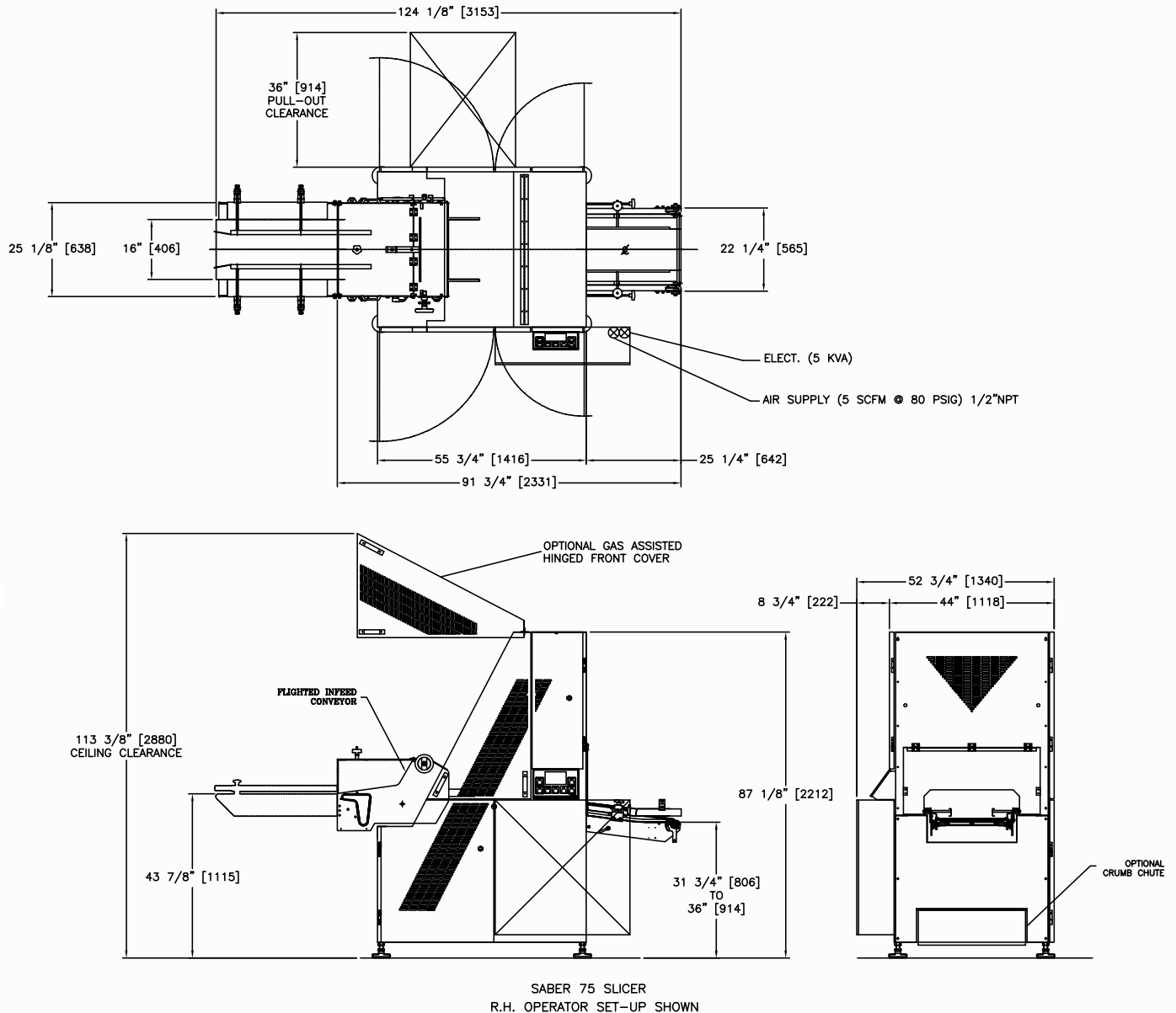
Approximate Shipping Dimensions:
 91 3/4" L x 53 1/4" W x 87 1/2" H
 (2330 mm x 1353 mm x 2223 mm)

Infeed Elevation: 42 7/8" (1089 mm)

Discharge Elevation: 31 3/4" (806 mm) to 36" (914 mm)

SABER 75 BAND SLICER

DIMENSIONAL DRAWING



Headquarters:
 2115 W. Laburnum Ave.
 Richmond, Virginia 23227
 Tel: 1-800-225-3771
 or 1-804-355-7961
 Fax: 1-804-342-9724
sales@amfbakery.com

Europe Office:
 6 The Sidings
 Station Road, Guiseley
 Leeds LS20 8BX, England
 Tel: 44-1943-875703
 Fax: 44-1943-871806
sales-europe@amfbakery.com

Asia Office:
 Room 15-2, A-Building
 Thunis Dev. Building
 No.11 Hui Xin East St.
 Chaoyang District
 Beijing, China 100029
 Tel: 86-10-64823613
 Fax: 86-10-64934259
sales-asia@amfbakery.com

FOR MORE INFORMATION PLEASE CALL YOUR ACCOUNT MANAGER OR

1-800-BAKERS-1
www.amfbakery.com

AMF's focus on continuous improvement may result in changes to machinery specifications without notice.



SABER 75 BAND SLICER

LATTICE MECHANISM

	NO. OF BLADES SLICING RANGE	SLICE THICKNESS		TOTAL NO. OF SLICES + HEELS	EFFECTIVE SLICING LOAF LENGTH	
		INCHES	MM		INCHES	MM
STANDARD	<u>21 BLADES</u> 3/8" to 5/8" (9.5 to 15.9 mm)	3/8"	9.5 mm	41 + 2	15-3/8"	391 mm
		7/16"	11.1 mm	36 + 2	15-3/4"	400 mm
		1/2"	12.7 mm	32 + 2	16"	406 mm
		9/16"	14.3 mm	28 + 2	16"	406 mm
		5/8"	15.9 mm	25 + 2	16"	406 mm
OPTIONAL	<u>18 BLADES</u> 3/8" to 3/4" (9.5 to 19.1 mm)	3/8"	9.5 mm	35 + 2	13-1/8"	333 mm
		7/16"	11.1 mm	35 + 2	15-5/16"	389 mm
		1/2"	12.7 mm	32 + 2	16"	406 mm
		9/16"	14.3 mm	28 + 2	16"	406 mm
		5/8"	15.9 mm	25 + 2	16"	406 mm
		3/4"	19.1 mm	21 + 2	16"	406 mm
OPTIONAL	<u>15 BLADES</u> 3/8" to 7/8" (9.5 to 22.2 mm)	3/8"	9.5 mm	29 + 2	10-7/8"	276 mm
		7/16"	11.1 mm	29 + 2	12-11/16"	322 mm
		1/2"	12.7 mm	29 + 2	14-1/2"	368 mm
		9/16"	14.3 mm	28 + 2	16"	406 mm
		5/8"	15.9 mm	25 + 2	16"	406 mm
		3/4"	19.1 mm	21 + 2	16"	406 mm
		7/8"	22.2 mm	18 + 2	16"	406 mm
OPTIONAL	<u>13 BLADES</u> 3/8" to 1" (9.5 to 25.4 mm)	3/8"	9.5 mm	25 + 2	9-3/8"	238 mm
		7/16"	11.1 mm	25 + 2	10-15/16"	278 mm
		1/2"	12.7 mm	25 + 2	12-1/2"	318 mm
		9/16"	14.3 mm	25 + 2	14-1/16"	357 mm
		5/8"	15.9 mm	25 + 2	15-5/8"	397 mm
		3/4"	19.1 mm	21 + 2	16"	406 mm
		7/8"	22.2 mm	18 + 2	16"	406 mm
		15/16"	23.8 mm	17 + 2	16"	406 mm
		1"	25.4 mm	16 + 2	16"	406 mm