

MECHANICAL PAN STACKER



- **Versatile machine for high speed stacking of sheet pans, peel boards or various bun pans**
- **Simple, economical design is ideal for automating this task in bakeries not requiring complete stacking/unstacking systems**

AMF

MECHANICAL PAN STACKER

FEATURES & BENEFITS

- Heavy duty construction and quality components assure high performance, longevity and minimum maintenance
- Continuous operation
- Accumulates pans during stack discharge until stack carriage returns
- Easily accessible controls

MECHANICAL FEATURES

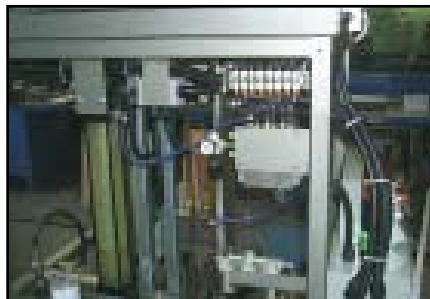
- Pans enter the stacker infeed conveyor and move the stack control assembly
- Retracting arms release each pan level to the stack carriage which lowers automatically as the stack is formed
- Once a preset height, up to 42" (1067 mm) is reached and the stack is advanced, the carriage returns to the receiving position
- During stack advance, auxiliary stack control arms accumulate incoming pans until the carriage returns to the stack position, permitting continuous pan flow
- Equipped with truck ramp to load roller bed trucks
- Hand wheel adjustments for width and depth
- Main stack carriage controlled by hydraulic/pneumatic system, only pressured air and electrical hook-up needed



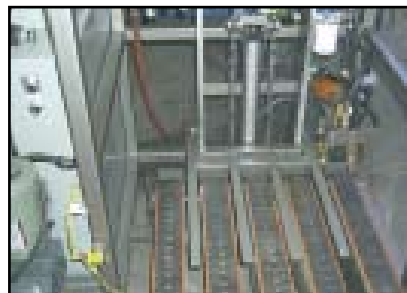
Infeed Belt



Pan Stop



Hydraulic/Pneumatic System



Stack Carrier



ELECTRICAL FEATURES

NEMA 12 machine mount steel electrical enclosure including:

- Main disconnect switch
- Allen Bradley SLC 5/04 PLC
- Allen Bradley starter and protectors
- Allen Bradley pushbuttons and switches



Side View with Control Panel

OPTIONS

- Roller bed trucks for standard truck ramp
- Truck dock conveyor for use with "U" shaped pan trucks
- "U" shaped pan trucks painted
- "U" shaped pan trucks galvanized



Unit with Roller Bed Truck

SPECIFICATIONS

Pan Rate (depending on pan size):
32/minute

Pan Size (width x length):
8" x 14" to 31" x 32"
(203 mm x 356 mm to 787 mm x 813 mm)

Stack Height:
42" (1067 mm) or 600 lb. (272 kg) maximum

Electrical Requirement:
Approximate Main Power: 7KVA
PLC I/O Voltage: 24VDC in/120VAC out

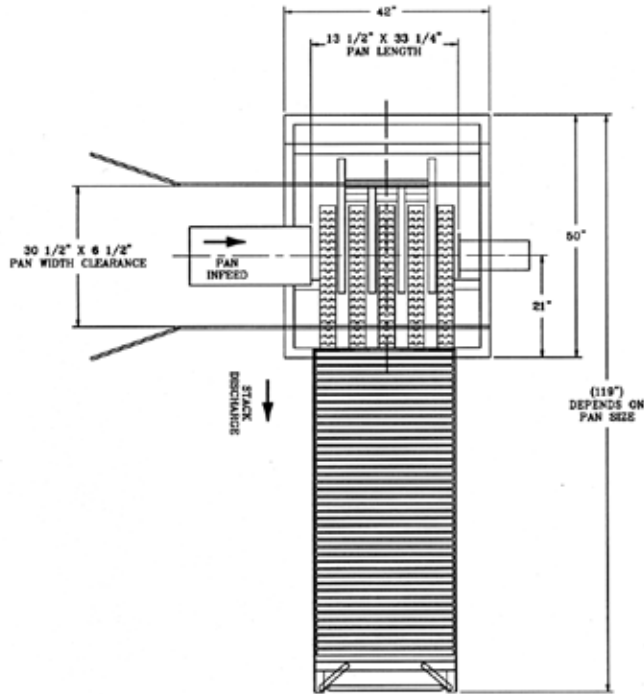
Approximate Shipping Dimensions:
96" x 56" x 72"
(2438 mm x 1422 mm x 1829 mm)



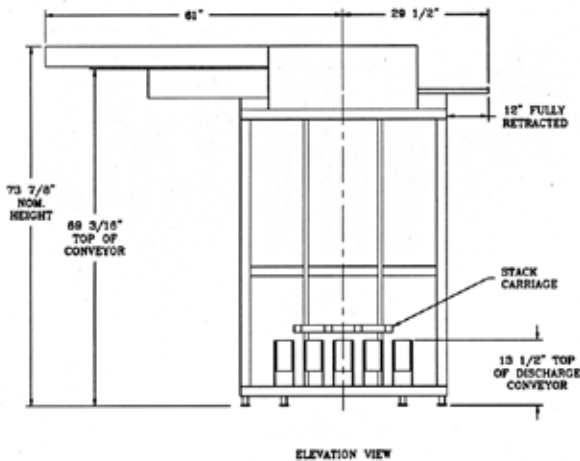
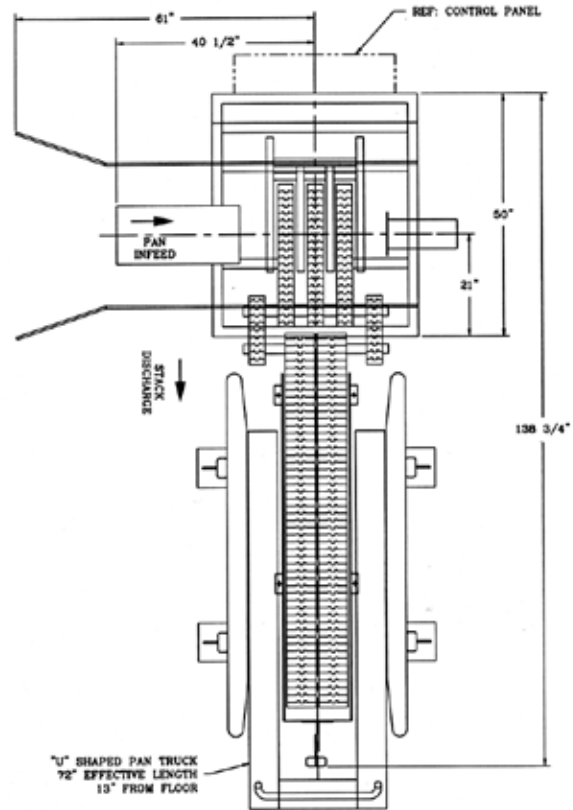
MECHANICAL PAN STACKER

DIMENSIONAL DRAWING

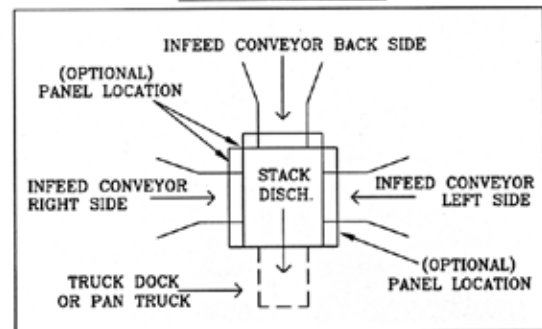
USED WITH ROLLER BED
 PAN TRUCK
 PLAN VIEW



USED WITH DOCK CONVEYOR AND
 "U" SHAPED PAN TRUCK
 PLAN VIEW



POSSIBLE LAYOUT



MAXIMUM PAN HEIGHT = 1 5/8"
 MAXIMUM STACK WEIGHT = 600 LBS
 STACK HEIGHT = 42"

Headquarters:
 2115 W. Laburnum Ave.
 Richmond, Virginia 23227
 Tel: 1-800-225-3771
 or 1-804-355-7961
 Fax: 1-804-342-9724
sales@amfbakery.com

Europe Office:
 6 The Sidings
 Station Road, Guiseley
 Leeds LS20 8BX, England
 Tel: 44-1943-875703
 Fax: 44-1943-871806
sales-europe@amfbakery.com

Asia Office:
 Room 15-2, A-Building
 Thunis Dev. Building
 No.11 Hui Xin East St.
 Chaoyang District
 Beijing, China 100029
 Tel: 86-10-64823613
 Fax: 86-10-64934259
sales-asia@amfbakery.com

FOR MORE INFORMATION PLEASE CALL YOUR ACCOUNT MANAGER OR

1-800-BAKERS-1
www.amfbakery.com

AMF's focus on continuous improvement may result in changes to machinery specifications without notice.