

AMF

Packaging - Processing
Bid on Equipment
1-847-854-8577
www.bid-on-equipment.com

CONICAL DOUGH ROUNDER



- **CW or CCW Rotation 3/4 Turn**
- **1-1/4, 1-1/2 Turn Available**
- **Reliable Performance**

FEATURES & BENEFITS

New Design Improvements

- Exterior is completely covered with stainless steel and includes easily removable Lexan sliding panels to contain flour dust

Variable motorized stainless steel flour duster

Easy Access to Mechanical Components

CONICAL DOUGH ROUNDER

MECHANICAL FEATURES

- Heavy duty material and electroless nickel plated
- Ground finished worm screw
- Brass worm gear
- Infeed deflector plate (flipper)
- Rounder trough with riveted Teflon sheet
 - Standard rounding trough 18 to 36 oz. (510 to 1020 g)
 - Other sizes available up to 56 oz. (1588 g)
- 60" (1524 mm) diameter rounding cone, vertically grooved
- Stainless steel discharge chute (90°)
- Stainless steel flour duster with DC controls
- Stainless steel top canopy and catch pan with 4 easily removable Teflon sliding panels to contain flour dust
- Stainless steel double eliminator (available on 3/4 turn only)
- Stainless steel panels are supplied at the base for easy access to the drive components
- Stainless steel recuperator box (available on 3/4 turn only)
- 5" (127 mm) high electroless nickel plated sanitary legs
- Kick-out device (available on 1-1/4 - 1 1/2 turn only)

ELECTRICAL FEATURES

- 3 HP motor with V-belt drive (available on 3/4 turn only)
- 5 HP motor with V-belt drive (available on 1-1/4 - 1-1/2 turn only)
- Electrical wiring in sealed conduit
- Allen Bradley controls

OPTIONS

Mechanical Options

- Stainless steel tangential chute for additional capacity
- Rounding cone scraper with UHMW blade
- Dust collector (Model DB2)

Electrical Options

- A/C inverter on flour duster and/or main drive

SPECIFICATIONS

Electrical Requirements:

230/460/575 volts, 3 phase, 60 Hz
 Total Connected Load: 2KVA
 PLC I/O Voltage: 24VDC in/120VAC out

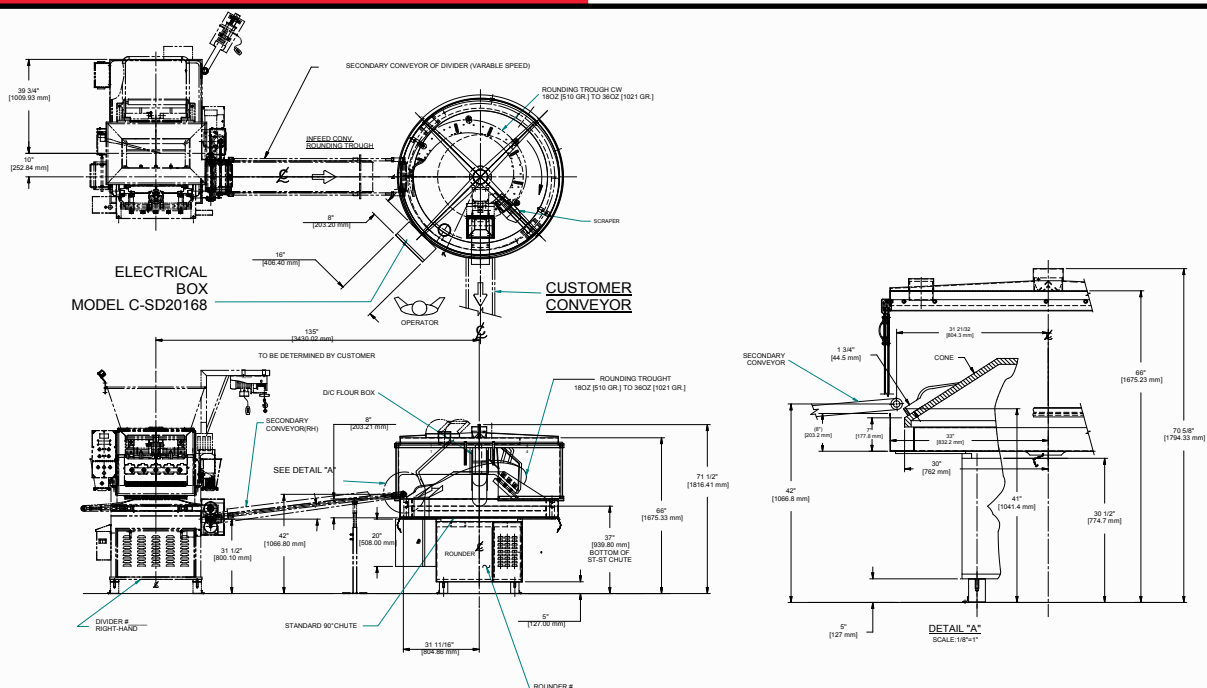
Approximate Shipping Weight:

2,800 lb. (1270 kg)

Approximate Shipping Dimensions:

66" (1676 mm) diameter x 72" (1829 mm) high

DIMENSIONAL DRAWING



Headquarters:
 2115 W. Laburnum Ave.
 Richmond, Virginia 23227
Tel: 1-800-225-3771
 or 1-804-355-7961
Fax: 1-804-342-9724
sales@amfbakery.com

Europe Office:
 6 The Sidings
 Station Road, Guiseley
 Leeds LS20 8BX, England
Tel: 44-1943-875703
Fax: 44-1943-871806
sales-europe@amfbakery.com

Asia Office:
 Room 15-2, A-Building
 Thunis Dev. Building
 No.11 Hui Xin East St.
 Chaoyang District
 Beijing, China 100029
Tel: 86-10-64823613
Fax: 86-10-64934259
sales-asia@amfbakery.com

FOR MORE INFORMATION PLEASE CALL YOUR ACCOUNT MANAGER OR

1-800-BAKERS-1
www.amfbakery.com

AMF's focus on continuous improvement may result in changes to machinery specifications without notice.