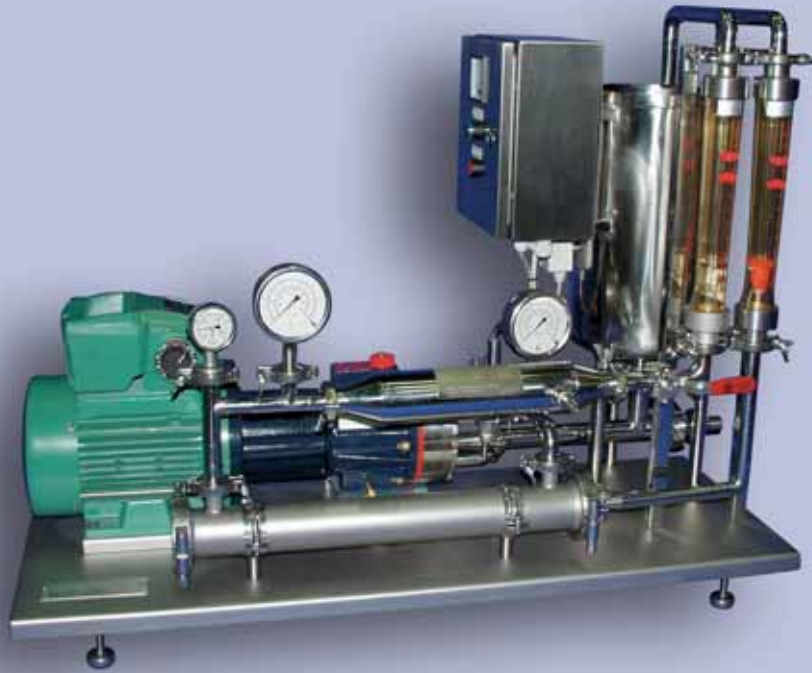




Alfa Laval PilotUnit 2.5" RO/NF

Pilot laboratory equipment for membrane filtration



The Alfa Laval PilotUnit 2.5" RO/NF is a desktop laboratory unit in a handy and compact design. It holds a 2.5" spiral element for reverse osmosis or nanofiltration with a membrane area of up to 2 m².

The Alfa Laval PilotUnit 2.5" RO/NF is ideal for reverse osmosis and nanofiltration tests of system configurations as well as for pilot and small-scale production.

Alfa Laval also provides tailor-made system solutions for individual requirements.

Alfa Laval spiral element options

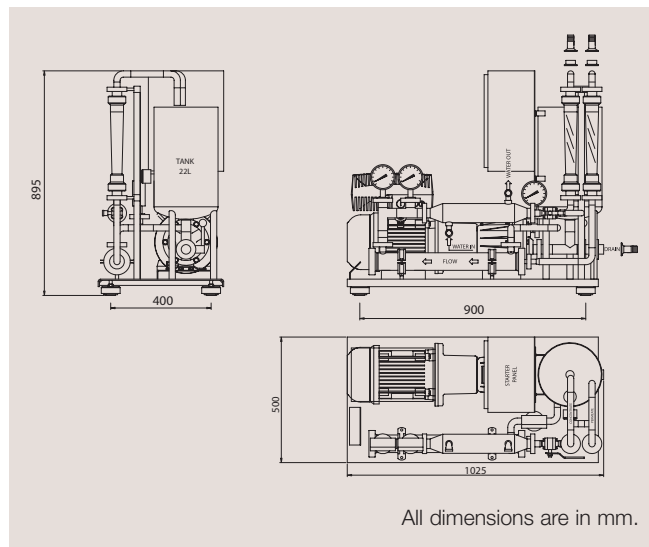
The element housing in the Alfa Laval PilotUnit 2.5" RO/NF is designed for the complete range of Alfa Laval 2517 test elements.

Please request our separate product description for detailed information.

Advantages

- Versatile filtration properties
 - up to 2 m² membrane area
 - test of different spiral element types
 - system configuration and comparison tests
 - product volumes ranging from 20 to 1,000 litres
- Sanitary design with all materials in compliance with FDA regulations
- Rapid, easy exchange of spiral element
- Operation at pH 1-13, and pressures of up to 60 bar
- Complete unit with pump, valves, instrumentation, tank, etc. Needs only a power supply, water, and feed product to operate

Dimensions



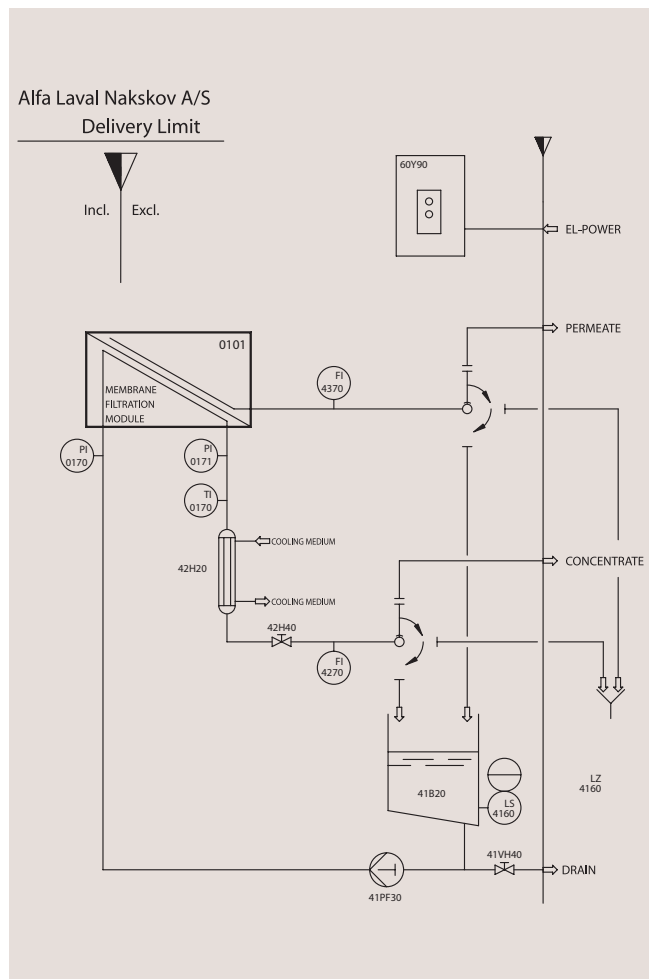
Alfa Laval PilotUnit 2.5" RO/NF data

Feed/drain	Ø38/34 for welding or
Retentate	outer diameter 28 mm
Permeate	hose connection ½" BSP female or
Cooling/heating water	outer diameter 14 mm hose connection
Tank capacity	20 l
Weight, empty	115 kg
Weight, liquid filled	135 kg (inclusive of 15 litres in tank)

Pump data

Make	Wanner
Type	G10XKSGSFEMB
Capacity	1.5 m³/h at 1-60 bar
Product wetted parts	AISI 316L, Viton, ELGELOY
Motor with integrated frequency converter	4 kW/1440 rpm

Flow diagram of Alfa Laval PilotUnit 2.5" RO/NF



Instrumentation

Pressure gauge, 0-100 bar	Module inlet
Pressure gauge, 0-100 bar	Module retentate outlet
Temperature gauge, 0-100°C	Module retentate outlet
Flow meter, 200-2500 l/h	Module retentate outlet
Flow meter, 40-600 l/h	Module permeate outlet

Code no.: 504900

PCM00030EN 0607

Alfa Laval reserves the right to change specifications without prior notification.

How to contact Alfa Laval

Up-to-date Alfa Laval contact details for all countries are always available on our website at www.alfalaval.com