



Liquid receivers - Liquid separators

Series LRDV, LRV, LRDH, LRH, SAD, SA



Liquid receivers - Liquid separators

Ricevitori di liquido - Separatori di liquido

Flüssigkeitssammler - Flüssigkeitsabscheider

Receptores de líquido - Separadores de líquido

Series/Serie/Baureihen/Serie: LRDV; LRV; LRDH; LRH, SAD; SA



LRDV, LRV, LRDH, LRH Liquid Receivers

Generally used to absorb load variations in the system and to stock the full refrigerant charge in case of maintenance, liquid receivers have their normal application both in water chillers and in air conditioning and refrigeration systems. The Alfa Laval range ensures solutions with vertical or horizontal development with the widest choice of certifications, in the two pieces (LRDV, LRDH) as in the three pieces (LRV, LRH) configuration with reserve capacities from 5 to 1000 litres.

SAD, SA Liquid separators

Installed on the suction line, they protect the compressor from liquid slugging, they provide a constant backflow of the oil and reduce the vibrations, operating as mufflers.

Quality and tests

Alfa Laval manufacture their receivers and separators according to strict quality procedures following ISO9001 rules. Each pressure vessel undergoes these tests:

- Pressure test carried out at values and procedures required by the different standards.
- Holding charge test with electronic helium leak detector (maximum acceptable leakage value equivalent to 3 g/year of R22).

| LRDV, LRHD | |
|------------|------------------|
| | CE |
| DP (bar) | 30 |
| TP (bar) | 42,9 |
| DT (C°) | -10 ¹ |
| | +90 |

¹ Available version with DT -40/+90°C (DP 24 bar, TP 34.3 bar) / Disponibile versione con DT -40/+90°C (DP 24 bar, TP 34.3 bar) / Lieferbare Ausführung mit DT -40/+90°C (DP 24 bar, TP 34.3 bar) / Disponible versión con DT -40/+90°C (DP 24 bares, TP 34.3 bares)

Ricevitori di liquido LRDV, LRV, LRDH, LRH

Normalmente impiegati per assorbire le variazioni di carico del sistema e per il contenimento dell'intera carica di refrigerante in caso di intervento di manutenzione, i ricevitori di liquido trovano applicazione sia all'interno di refrigeratori che in impianti di condizionamento e refrigerazione. La gamma Alfa Laval offre soluzioni a sviluppo verticale o orizzontale con la più ampia scelta di certificazioni, sia nella costruzione in due semigusci (LRDV, LRDH) che in due fondi e un mantello (LRV, LRH) con capacità di riserva da 5 a 1000 litri.

Separatori di liquido SAD, SA

Installati sulla linea di aspirazione, proteggono il compressore dal ritorno di liquido, garantiscono un costante ritorno dell'olio al compressore e riducono le vibrazioni agendo come silenziosi.

La qualità e le prove

Alfa Laval costruisce i propri ricevitori e separatori in accordo a rigide procedure di qualità che rispondono alla normativa ISO9001. Ogni recipiente in pressione viene sottoposto alle seguenti prove:

- Prova a pressione ai valori e con le modalità previsti dagli standard Alfa Laval o dalle diverse normative di riferimento.
- Prova di tenuta con cercafughe ad elio (valore massimo accettabile di perdita equivalente a 3 g/anno di R22).

| | Alfa Laval standard | CE | LRV, LRH | | | | |
|----------|---------------------|------|---------------------|---------------------|------|------|-------------------|
| | | | UDT | | GOST | SQL | ASME ² |
| | | | V<25dm ³ | V>25dm ³ | | | |
| DP (bar) | 27 | 30 | 27 | 24,5 | 30 | 30 | 30 |
| TP (bar) | 30 | 42,9 | 29,7 | 30,6 | 42,9 | 42,9 | 33 |
| DT (C°) | -10 | -10 | -10 | -10 | -10 | -10 | -10 |
| | +90 | +90 | +90 | +60 | +90 | +90 | +90 |

² With shell diameter 194 mm are not available with this approval / I modelli con diametro mantello 194 mm non sono disponibili con questa approvazione / Die Typen mit 194 mm Manteldurchmesser sind nicht mit dieser Baumuster genehmigung lieferbar / Los modelos con diámetro camisa 194 mm no están disponibles con esta aprobación





Flüssigkeitssammler LRDV, LRV, LRDH, LRH

Flüssigkeitssammler dienen normalerweise zum Ausgleich von Lastschwankungen und zur Speicherung der Kältemittelfüllung im Servicefall und werden sowohl in Kühlern als auch in Klima- und Kälteanlagen eingebaut. Die Alfa Laval Baureihen bieten stehende und liegende Geräte bei einer großen Auswahl von Zulassungen, Bauweise mit zwei Hauben (LRDV, LRDH) oder zwei Böden und einem Mantelrohr (LRV, LRH) und einer Aufnahmemenge zwischen 5 und 1000 Litern.

Flüssigkeitsabscheider SAD, SA

Zum Schutz des Verdichters vor Flüssigkeitsschlägen in der Saugleitung montiert, sorgen sie für einen konstanten Rücklauf des Öls zum Verdichter, verringern die Vibrationen und wirken schalldämpfend.

Qualität und Prüfungen

Alfa Laval baut die Flüssigkeitssammler und -abscheider unter Einhaltung der strengen Qualitätsauflagen gemäß ISO9001.

Jeder Druckbehälter wird den folgenden Prüfungen unterzogen:

- Druckprüfung nach Maßgabe der Werte und Modalitäten, die von den Alfa Laval Standards oder jeweiligen anderen Bezugsnormen vorgeschrieben sind.
- Dichtheitsprüfung mit Heliumlecksuchern (zulässiger Höchstverlust 3 g/Jahr R22).

DP = design pressure / *pressione di progetto* / Auslegungsdruck / *presión de diseño*
 TP = test pressure / *pressione di prova* / Prüfdruck / *presión de prueba* DT = design temperatures (minimum and maximum) / *temperatura (minima e massima) di progetto* / Auslegungstemperatur (min. und max.) / *temperaturas (minima y maxima) de diseño*
 V = volume / *volume* / Inhalt / *volumen*



Receptores de líquido LRDV, LRV, LRDH, LRH

Los receptores de líquido, que habitualmente se utilizan para absorber las variaciones de carga del sistema y para contener toda la carga de refrigerante en caso de intervención de mantenimiento, se emplean tanto en el interior de refrigeradores como en instalaciones de acondicionamiento y refrigeración. La gama Alfa Laval ofrece soluciones con desarrollo vertical u horizontal con la elección más amplia de certificaciones, tanto en la fabricación en dos semicascos (LRDV, LRDH) como en dos fondos y una camisa (LRV, LRH) con capacidad de reserva de 5 a 1000 litros.

Separadores de líquido SAD, SA

Instalados en la línea de aspiración, protegen el compresor contra el retorno de líquido, garantizan un retorno constante del aceite al compresor y reducen las vibraciones actuando como silenciadores.

La calidad y las pruebas

Alfa Laval fabrica sus propios receptores y separadores de conformidad con rigurosos procedimientos de calidad que satisfacen la normativa ISO9001.

Cada recipiente a presión es sometido a las pruebas siguientes:

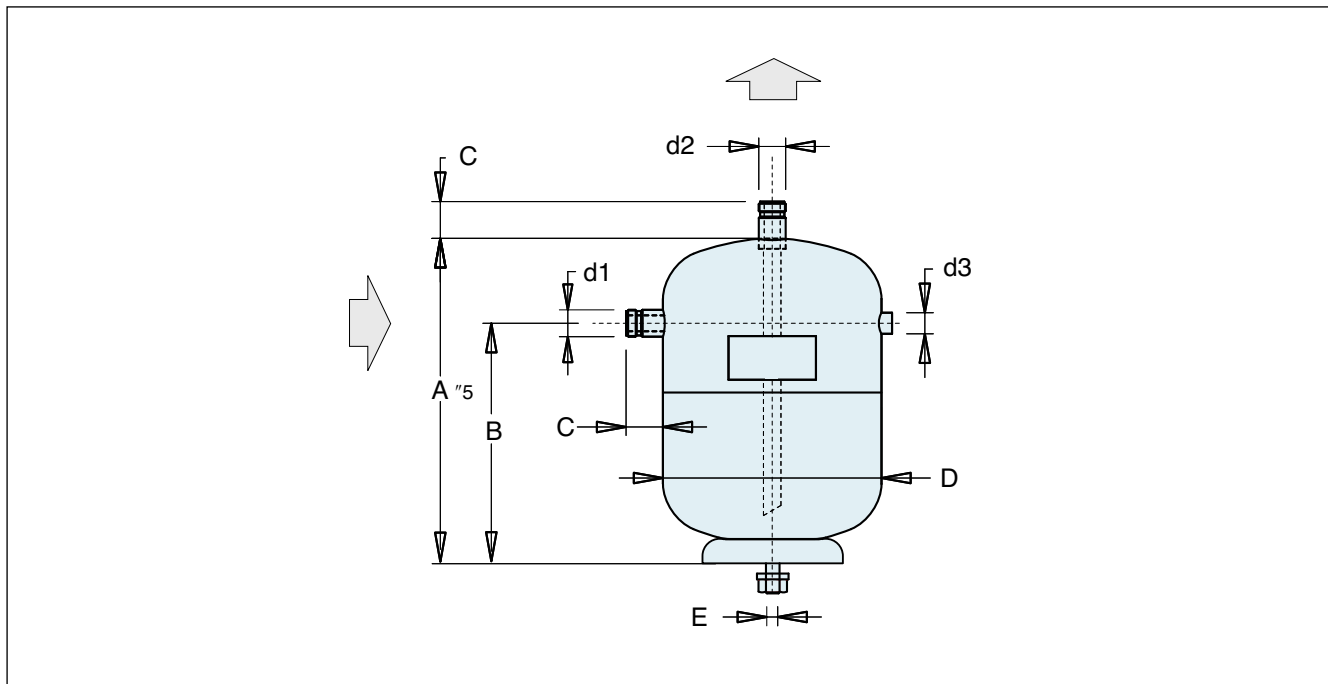
- Prueba de presión según los valores y las modalidades previstos por los estándares Alfa Laval o por las diferentes normativas de referencia.
- Prueba de hermeticidad con buscafugas de helio (valor máximo aceptable de pérdida equivalente a 3 g/año de R22).

| SAD | |
|----------|------------------|
| CE | |
| DP (bar) | 30 |
| TP (bar) | 42,9 |
| DT (C°) | -10 ³ |
| | +90 |

³ Available version with DT -40/+90°C (DP 24 bar, TP 34.3 bar) / *Disponibile versione con DT -40/+90°C (DP 24 bar, TP 34.3 bar)* / Lieferbare Ausführung mit DT -40/+90°C (DP 24 bar, TP 34.3 bar) / *Disponibile versión con DT -40/+90°C (DP 24 bares, TP 34.3 bares)*

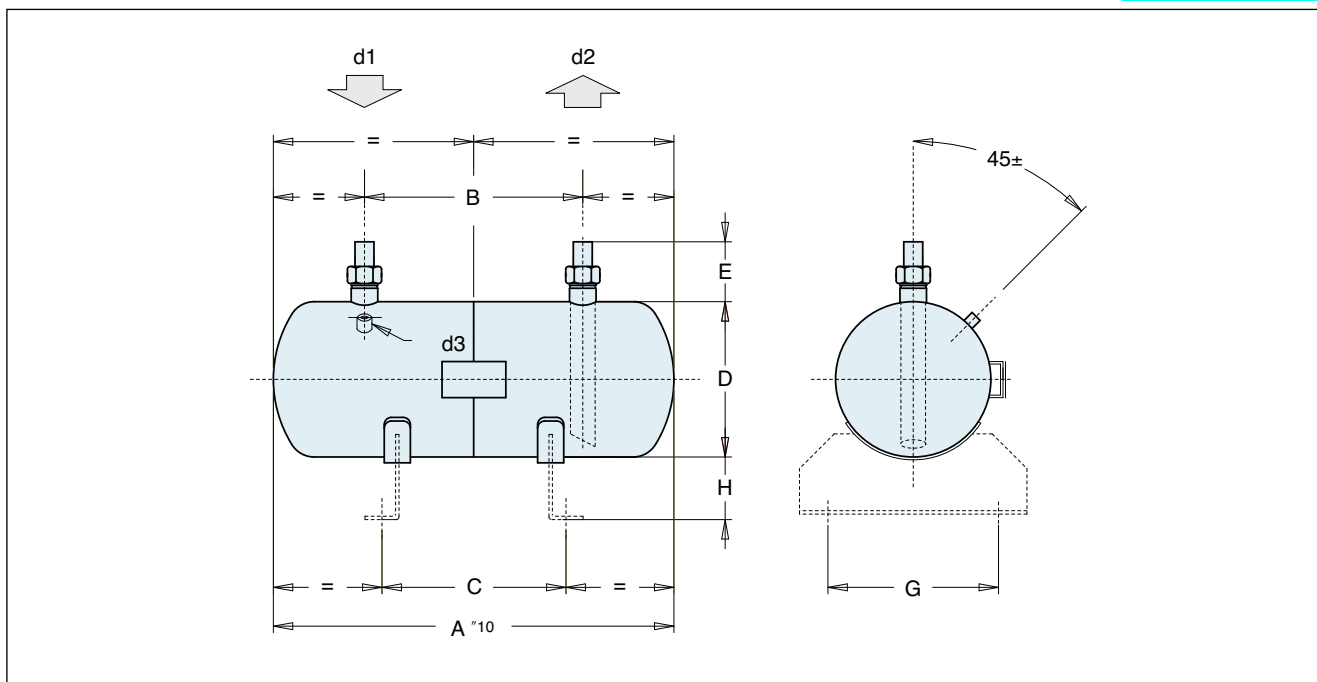
| | SA | | | | | | |
|----------|---------------------|------|---------------------|---------------------|------|------|-------------------|
| | Alfa Laval standard | CE | UDT | | GOST | SQL | ASME ² |
| | | | V<25dm ³ | V>25dm ³ | | | |
| DP (bar) | 27 | 30 | 27 | 24,5 | 30 | 30 | 30 |
| TP (bar) | 30 | 42,9 | 29,7 | 30,6 | 42,9 | 42,9 | 33 |
| DT (C°) | -10 | -10 | -10 | -10 | -10 | -10 | -10 |
| | +90 | +90 | +90 | +60 | +90 | +90 | +90 |

² Models with shell diameter 194 mm are not available with this approval / *I modelli con diametro mantello 194 mm non sono disponibili con questa approvazione* / Die Typen mit 194 mm Manteldurchmesser sind nicht mit dieser Baumuster genehmigung lieferbar / *Los modelos con diámetro camisa 194 mm no están disponibles con esta aprobación*



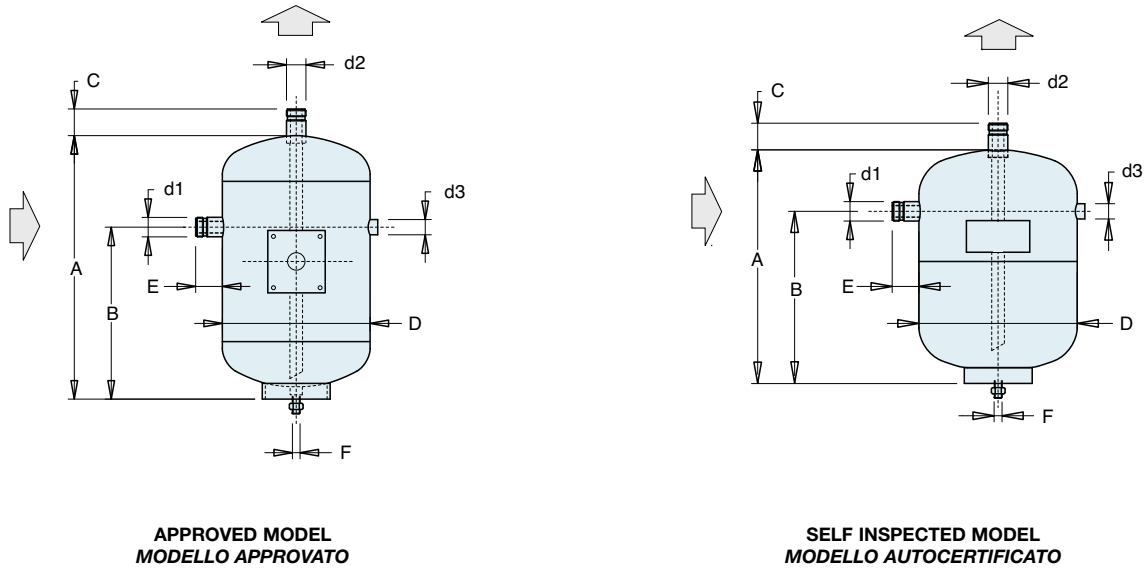
| | | | LRDV 5 | LRDV 7 | LRDV 12 | LRDV 18 | LRDV 24 | LRDV 30 |
|--|----------------|-----------------|-----------|-----------|------------|------------|------------|------------|
| Dimensions <i>Dimensioni</i> <i>Abmessungen</i> <i>Dimensiones</i> | A | mm | 280 | 280 | 380 | 410 | 510 | 530 |
| | B | mm | 220 | 220 | 280 | 300 | 380 | 415 |
| | C | mm | 35 | 35 | 35 | 35 | 35 | 35 |
| | D | mm | 160 | 200 | 230 | 270 | 270 | 300 |
| | E | mm | M12 | M12 | M12 | M12 | M12 | M12 |
| Connections <i>Attacchi</i> <i>Anschlüsse</i> <i>Empalmes</i> | d1 | Rotalock | 1" | 1" | 1 1/4" | 1 1/4" | 1 1/4" | 1 1/4" |
| | d2 | Rotalock | 1" | 1" | 1 1/4" | 1 1/4" | 1 1/4" | 1 1/4" |
| | d3 | NPT | 3/8" | 3/8" | 3/8" | 3/8" | 3/8" | 3/8" |
| | V _R | dm ³ | 4.6 | 7.2 | 12.2 | 18.4 | 24 | 30 |
| | P | kg | 4.8 | 5.4 | 7.8 | 9.9 | 12.7 | 19.8 |

| | | | | | |
|----|----------------------------------|----------------|----------------------|---|---------|
| d3 | attacco valvola di sicurezza | V _R | volume refrigerante | P | peso |
| d3 | safety valve connection | V _R | refrigerant volume | P | weight |
| d3 | Anschluss des Sicherheitsventils | V _R | Kältemittelvolumen | P | Gewicht |
| d3 | empalme válvula de seguridad | V _R | volumen refrigerante | P | peso |



| | | | LRDH 5 | LRDH 7 | LRDH 12 | LRDH 18 | LRDH 24 | LRDH 30 |
|--|----------------|-----------------|-----------|-----------|------------|------------|------------|------------|
| Dimensions <i>Dimensioni</i> <i>Abmessungen</i> <i>Dimensiones</i> | A | mm | 275 | 275 | 370 | 400 | 500 | 520 |
| | B | mm | 135 | 133 | 200 | 198 | 238 | 236 |
| | D | mm | 160 | 200 | 230 | 270 | 270 | 300 |
| | E | mm | 35 | 35 | 35 | 35 | 35 | 35 |
| Connections <i>Attacchi</i> <i>Anschlüsse</i> <i>Empalmes</i> | d1 | Rotalock | 1" | 1" | 1 1/4" | 1 1/4" | 1 1/4" | 1 1/4" |
| | d2 | Rotalock | 1" | 1" | 1 1/4" | 1 1/4" | 1 1/4" | 1 1/4" |
| | d3 | NPT | 3/8" | 3/8" | 3/8" | 3/8" | 3/8" | 3/8" |
| | V _R | dm ³ | 4.6 | 7.2 | 12.2 | 18.4 | 24 | 30 |
| | P | kg | 4.8 | 5.4 | 7.8 | 9.9 | 12.7 | 19.8 |

| | | | | | |
|----|----------------------------------|----------------|----------------------|---|---------|
| d3 | attacco valvola di sicurezza | V _R | volume refrigerante | P | peso |
| d3 | safety valve connection | V _R | refrigerant volume | P | weight |
| d3 | Anschluss des Sicherheitsventils | V _R | Kältemittelvolumen | P | Gewicht |
| d3 | empalme válvula de seguridad | V _R | volumen refrigerante | P | peso |



| SELF INSPECTED MODEL MODELLO AUTOCERTIFICATO | | | LRV 5 | LRV 7 | LRV 12 | LRV 24 |
|--|----------------|-----------------|----------|----------|-----------|-----------|
| Dimensions <i>Dimensioni</i> Abmessungen <i>Dimensiones</i> | A | mm | 290 | 290 | 380 | 510 |
| | B | mm | 220 | 220 | 280 | 380 |
| | C | mm | 35 | 35 | 35 | 35 |
| | D | mm | 160 | 200 | 230 | 270 |
| | E | mm | 35 | 35 | 35 | 35 |
| | F | mm | M10 | M12 | M12 | M12 |
| Connections <i>Attacchi</i> Anschlüsse <i>Empalmes</i> | d1 | Rotalock | 1" | 1" | 1 1/4" | 1 1/4" |
| | d2 | Rotalock | 1" | 1" | 1 1/4" | 1 1/4" |
| | d3 | NPT | 1/4" | 1/4" | 1/4" | 1/4" |
| | V _R | dm ³ | 4.5 | 7.2 | 12.2 | 24.8 |
| | P | Kg | 4 | 4.5 | 6.5 | 9.7 |

| APPROVED MODEL MODELLO APPROVATO | | | LRV 5 | LRV 7 | LRV 12 | LRV 24 |
|--|----------------|-----------------|----------|----------|-----------|-----------|
| Dimensions <i>Dimensioni</i> Abmessungen <i>Dimensiones</i> | A | mm | 310 | 310 | 370 | 520 |
| | B | mm | 220 | 225 | 273 | 395 |
| | C | mm | 35 | 35 | 35 | 35 |
| | D | mm | 168 | 194 | 219 | 273 |
| | E | mm | 35 | 35 | 35 | 35 |
| | F | mm | M10 | M12 | M12 | M12 |
| Connections <i>Attacchi</i> Anschlüsse <i>Empalmes</i> | d1 | Rotalock | 1" | 1" | 1 1/4" | 1 1/4" |
| | d2 | Rotalock | 1" | 1" | 1 1/4" | 1 1/4" |
| | d3 | NPT | 1/4" | 1/4" | 1/4" | 1/4" |
| | V _R | dm ³ | 4.5 | 7.2 | 12.2 | 24.8 |
| | P | Kg | 4 | 4.5 | 13 | 25 |

V_R Refrigerant volumeV_R *Volume refrigerante*V_R KältemittelvolumenV_R *Volumen refrigerante*

P Weight

P *Peso*

P Gewicht

P *Peso*

d3 Safety valve connection

d3 *Attacco valvola di sicurezza*

d3 Anschluss des Sicherheitsventils

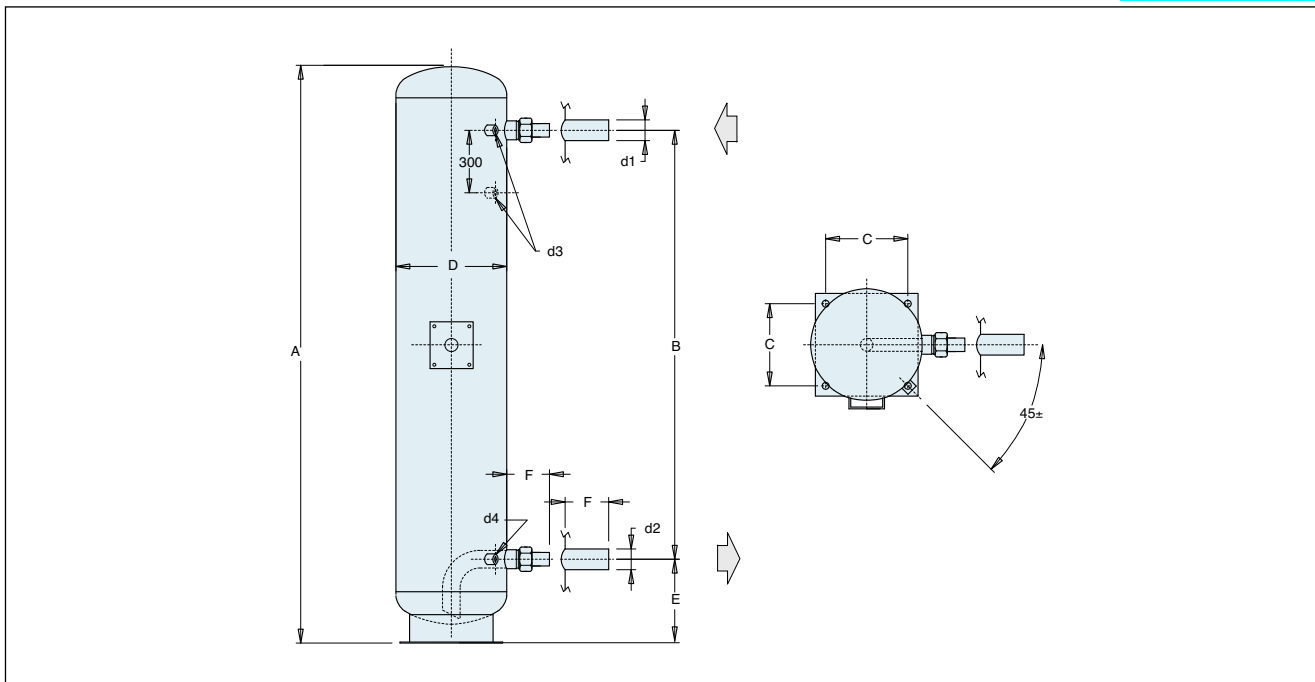
d3 *Empalme válvula de seguridad*

d4 Service socket

d4 *Attacco di servizio*

d4 Hilfsanschluß

d4 *Conexión de servicio*



| MODEL MODELLO | | LRV 30 | LRV 40 | LRV 50 | LRV 51 | LRV 60 | LRV 80 | LRV 90 | |
|--|-----------------|-----------|-----------|-----------|-----------|-----------|-----------|-----------|--------|
| Dimensions Dimensioni Abmessungen Dimensiones | A | mm | 940 | 1210 | 1660 | 970 | 1220 | 1470 | 1720 |
| | B | mm | 600 | 850 | 1300 | 590 | 840 | 1090 | 1340 |
| | C | mm | 160 | 160 | 210 | 210 | 210 | 210 | 210 |
| | D | mm | 219 | 219 | 219 | 273 | 273 | 273 | 273 |
| | E | mm | 205 | 220 | 218 | 218 | 218 | 218 | 218 |
| | F | mm | 80 | 80 | 80 | 80 | 80 | 80 | 80 |
| Connections Attacchi Anschlüsse Empalmes | d1 | Rotalock | 1 3/4" | 1 3/4" | 1 3/4" | 1 3/4" | 1 3/4" | ODS 42 | ODS 42 |
| | d2 | Rotalock | 1 3/4" | 1 3/4" | 1 3/4" | 1 3/4" | 1 3/4" | 1 3/4" | 1 3/4" |
| | d3 | NPT | 1/2" | 1/2" | 1" | 1" | 1" | 1" | 1" |
| | d4 | NPT | 1/4" | 1/4" | 1/4" | 1/4" | 1/4" | 1/4" | 1/4" |
| Vr | dm ³ | 28 | 37 | 52 | 46 | 59 | 72 | 86 | |
| P | Kg | 32 | 40 | 55 | 45 | 55 | 65 | 76 | |

| MODEL MODELLO | | LRV 110 | LRV 120 | LRV 130 | LRV 150 | LRV 180 | LRV 200 | LRV 250 | LRV 300 | |
|--|-----------------|------------|------------|------------|------------|------------|------------|------------|------------|---------|
| Dimensions Dimensioni Abmessungen Dimensiones | A | mm | 1585 | 1715 | 1815 | 1380 | 1632 | 1805 | 2225 | 2635 |
| | B | mm | 1150 | 1280 | 1380 | 855 | 1250 | 1250 | 1670 | 2080 |
| | C | mm | 250 | 250 | 250 | 320 | 320 | 320 | 320 | 320 |
| | D | mm | 324 | 324 | 324 | 406 | 406 | 406 | 406 | 406 |
| | E | mm | 245 | 245 | 300 | 300 | 300 | 300 | 300 | 300 |
| | F | mm | 80 | 80 | 80 | 80 | 80 | 80 | 80 | 80 |
| Connections Attacchi Anschlüsse Empalmes | d1 | ODS - mm | 54 | 54 | 54 | 54 | 54 | 54 | 54 | OD 76 |
| | d2 | ODS - mm | 42 | 42 | 42 | 42 | 42 | 54 | 54 | OD 76 |
| | d3 | NPT | 1" | 1" | 1" | 1" | 1" | 1" | 1" | n° 2x1" |
| | d4 | NPT | 1/4" | 1/4" | 1/4" | 1/4" | 1/4" | 1/4" | 1/4" | 1/4" |
| Vr | dm ³ | 110 | 120 | 128 | 146 | 180 | 200 | 250 | 300 | |
| P | Kg | 93 | 101 | 113 | 127 | 138 | 152 | 185 | 217 | |

Vr Refrigerant volume

Vr Volume refrigerante

Vr Kältemittelvolumen

Vr Volumen refrigerante

P Weight

P Peso

P Gewicht

P Peso

d3 Safety valve connection

d3 Attacco valvola di sicurezza

d3 Anschluss des Sicherheitsventils

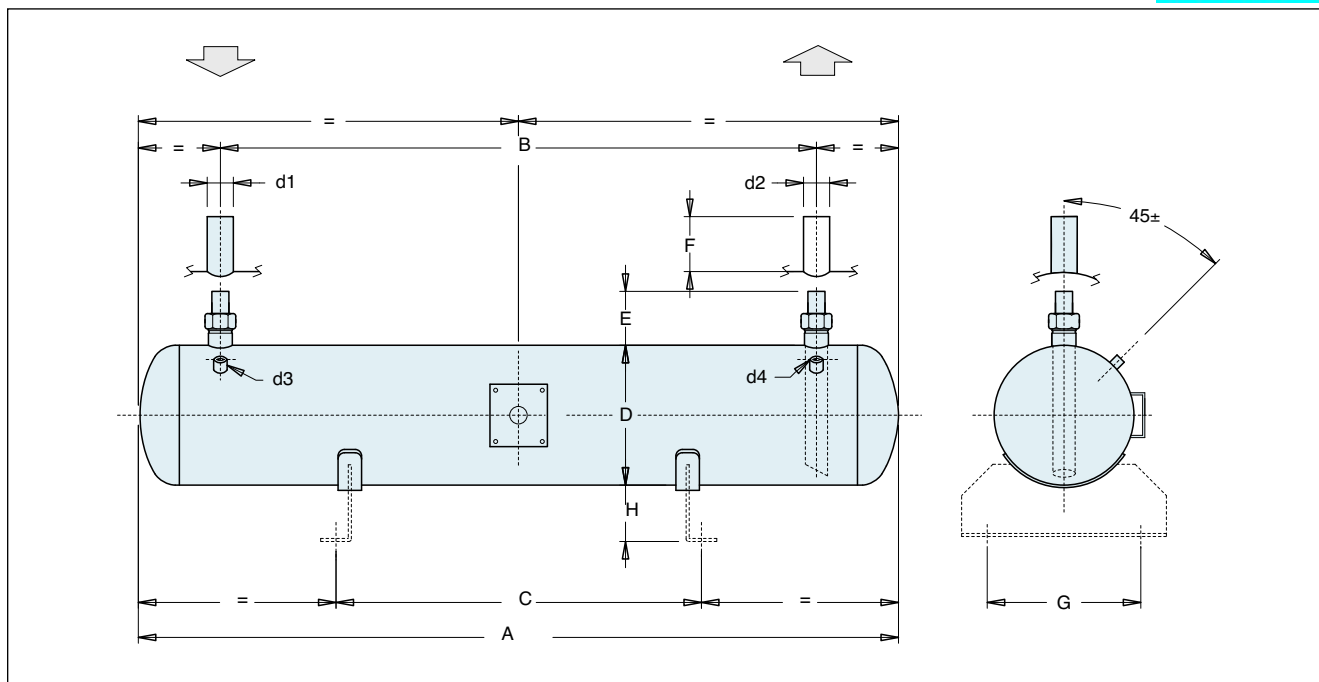
d3 Empalme válvula de seguridad

d4 Service socket

d4 Attacco di servizio

d4 Hilfsanschluß

d4 Conexión de servicio



| MODEL MODELLO | | | LRH 7 | LRH 12 | LRH 14 | LRH 18 | LRH 22 | LRH 25 | LRH 26 |
|--|-----------------|----------|----------|-----------|-----------|-----------|-----------|-----------|-----------|
| Dimensions Dimensioni Abmessungen Dimensiones | A | mm | 490 | 850 | 650 | 850 | 1050 | 1200 | 955 |
| | B | mm | 280 | 640 | 400 | 600 | 800 | 950 | 700 |
| | C | mm | 300 | 500 | 400 | 500 | 700 | 800 | 600 |
| | D | mm | 140 | 140 | 168 | 168 | 168 | 168 | 194 |
| | E | mm | — | — | — | — | — | — | — |
| | G | mm | 160 | 160 | 160 | 160 | 160 | 160 | 160 |
| | H | mm | 60 | 60 | 60 | 60 | 60 | 60 | 60 |
| Connections Attacchi Anschlüsse Empalmes | d1 | Rotalock | 1" | 1 1/4" | 1 1/4" | 1 1/4" | 1 1/4" | 1 1/4" | 1 1/4" |
| | d2 | Rotalock | 1" | 1 1/4" | 1 1/4" | 1 1/4" | 1 1/4" | 1 1/4" | 1 1/4" |
| | d3 | NPT | 1/2" | 1/2" | 1/2" | 1/2" | 1/2" | 1/2" | 1/2" |
| | d4 | NPT | 1/4" | 1/4" | 1/4" | 1/4" | 1/4" | 1/4" | 1/4" |
| V _R | dm ³ | 7.0 | 11.7 | 13.2 | 17.4 | 21.5 | 24.8 | 24.8 | |
| P | Kg | 6 | 10.5 | 10 | 12.4 | 15.1 | 18.6 | 21 | |

| MODEL MODELLO | | | LRH 30 | LRH 40 | LRH 50 | LRH 51 | LRH 60 | LRH 80 | LRH 90 |
|--|-----------------|----------|-----------|-----------|-----------|-----------|-----------|-----------|-----------|
| Dimensions Dimensioni Abmessungen Dimensiones | A | mm | 880 | 1150 | 1600 | 914 | 1165 | 1415 | 1664 |
| | B | mm | 600 | 850 | 1300 | 590 | 840 | 1090 | 1340 |
| | C | mm | 450 | 600 | 1000 | 450 | 600 | 800 | 1000 |
| | D | mm | 219 | 219 | 219 | 273 | 273 | 273 | 273 |
| | E | mm | 70 | 70 | 70 | 70 | 70 | 70 | 70 |
| | F | mm | — | — | — | — | — | 80 | 80 |
| | G | mm | 260 | 260 | 260 | 300 | 300 | 300 | 300 |
| | H | mm | 80 | 80 | 80 | 100 | 100 | 100 | 100 |
| Connections Attacchi Anschlüsse Empalmes | d1 | Rotalock | 1 3/4" | 1 3/4" | 1 3/4" | 1 3/4" | 1 3/4" | ODS 42 | ODS 42 |
| | d2 | Rotalock | 1 3/4" | 1 3/4" | 1 3/4" | 1 3/4" | 1 3/4" | 1 3/4" | 1 3/4" |
| | d3 | NPT | 1/2" | 1/2" | 1" | 1" | 1" | 1" | 1" |
| | d4 | NPT | 1/4" | 1/4" | 1/4" | 1/4" | 1/4" | 1/4" | 1/4" |
| V _R | dm ³ | 28 | 37 | 52 | 46 | 59 | 72 | 86 | |
| P | Kg | 30 | 38.5 | 53.5 | 42 | 52.5 | 63 | 74 | |

V_R Refrigerant volumeV_R Volume refrigeranteV_R KältemittelvolumenV_R Volumen refrigerante

P Weight

P Peso

P Gewicht

P Peso

d3 Safety valve connection

d3 Attacco valvola di sicurezza

d3 Anschluss des Sicherheitsventils

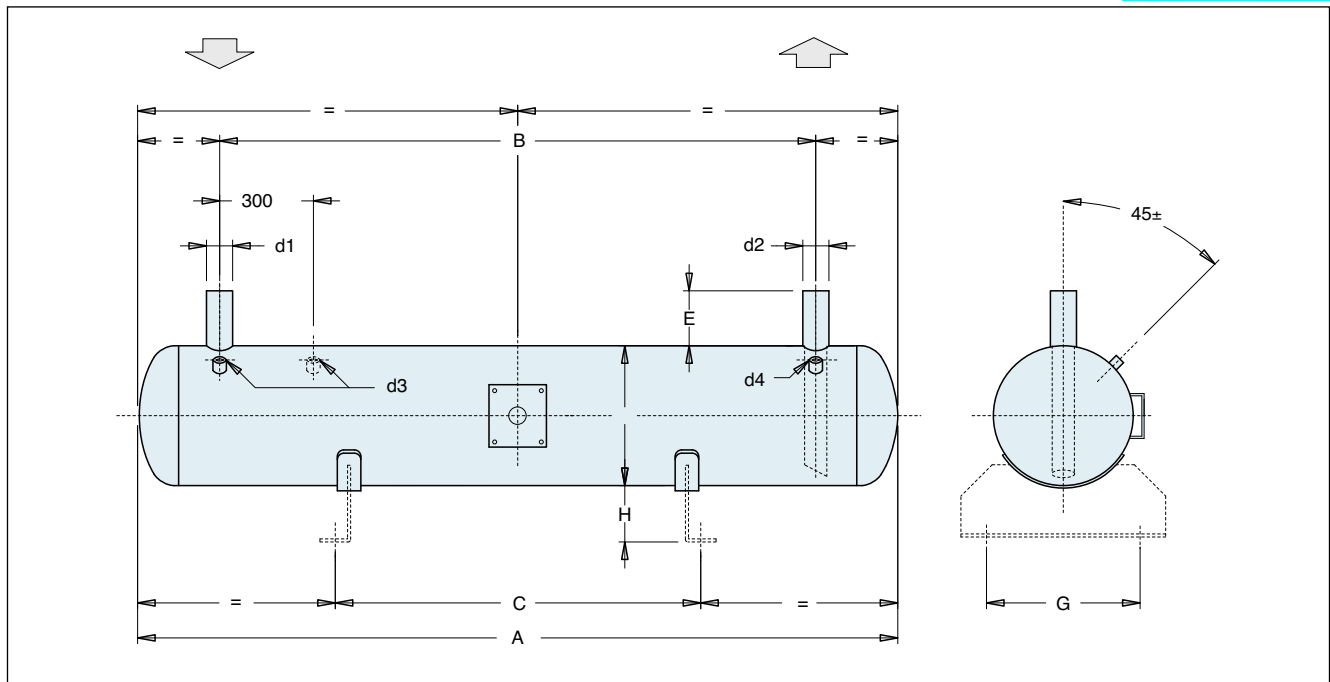
d3 Empalme válvula de seguridad

d4 Service socket

d4 Attacco di servizio

d4 Hilfsanschluss

d4 Conexión de servicio



| MODEL MODELLO | | | LRH 110 | LRH 120 | LRH 130 | LRH 150 | LRH 180 | LRH 200 | LRH 250 | LRH 300 |
|--|----------------|-----------------|------------|------------|------------|------------|------------|------------|------------|------------|
| Dimensions Dimensioni Abmessungen Dimensiones | A | mm | 1530 | 1660 | 1760 | 1340 | 1594 | 1764 | 2184 | 2594 |
| | B | mm | 1150 | 1280 | 1380 | 825 | 1080 | 1250 | 1670 | 2080 |
| | C | mm | 800 | 1000 | 1100 | 600 | 800 | 1000 | 1200 | 1400 |
| | D | mm | 324 | 324 | 324 | 406 | 406 | 406 | 406 | 406 |
| | F | mm | 80 | 80 | 80 | 80 | 80 | 80 | 80 | 80 |
| | G | mm | 300 | 300 | 300 | 300 | 400 | 400 | 400 | 400 |
| | H | mm | 100 | 100 | 100 | 100 | 120 | 120 | 120 | 120 |
| Connections Attacchi Anschlüsse Empalmes | d1 | ODS - mm | 54 | 54 | 54 | 54 | 54 | 54 | 54 | OD 76 |
| | d2 | ODS - mm | 42 | 42 | 42 | 42 | 42 | 54 | 54 | OD 76 |
| | d3 | NPT | 1" | 1" | 1" | 1" | 1" | 1" | 1" | n° 2x1" |
| | d4 | NPT | 1/4" | 1/4" | 1/4" | 1/4" | 1/4" | 1/4" | 1/4" | 1/4" |
| | V _R | dm ³ | 110 | 120 | 128 | 146 | 180 | 200 | 250 | 300 |
| | P | Kg | 90 | 97 | 108 | 122 | 132 | 146 | 179 | 211 |

| MODEL ON REQUEST * MODELLO SU RICHIESTA * | | | LRH 400 | LRH 500 | LRH 600 | LRH 650 | LRH 750 | LRH 900 | LRH 1000 |
|--|----------------|-----------------|------------|------------|------------|------------|------------|------------|-------------|
| Dimensions Dimensioni Abmessungen Dimensiones | A | mm | 2906 | 2958 | 3458 | 3008 | 3508 | 3534 | 3884 |
| | B | mm | 2300 | 2300 | 2800 | 2300 | 2800 | 2800 | 3150 |
| | C | mm | 1600 | 1600 | 2000 | 1600 | 2000 | 2000 | 2200 |
| | D | mm | 457 | 508 | 508 | 558 | 558 | 610 | 610 |
| | F | mm | 80 | 80 | 80 | 80 | 80 | 80 | 80 |
| | G | mm | 310 | 350 | 350 | 400 | 400 | 440 | 440 |
| | H | mm | 120 | 120 | 120 | 150 | 150 | 150 | 150 |
| Connections Attacchi Anschlüsse Empalmes | d1 | OD - mm | 76 | 101,6 | 101,6 | 101,6 | 114,3 | 114,3 | 114,3 |
| | d2 | OD - mm | 76 | 88,9 | 88,9 | 88,9 | 101,6 | 114,3 | 114,3 |
| | d3 | NPT | n° 2x1" | n° 2x1" | n° 2x1" | n° 3x1" | n° 3x1" | n° 3x1" | n° 3x1" |
| | d4 | NPT | 1/4" | 1/4" | 1/4" | 1/4" | 1/4" | 1/4" | 1/4" |
| | V _R | dm ³ | 410 | 515 | 610 | 640 | 750 | 890 | 995 |
| | P | Kg | 321 | 367 | 425 | 412 | 477 | 530 | 600 |

* Orders will be accepted case by case depending on the materials availability

* L'esecuzione è subordinata alla disponibilità dei materiali e sarà confermata al momento dell'ordine

* Bestellungen können erst nach Prüfung der Materialverfügbarkeit angenommen werden

* La ejecución está subordinada a la disponibilidad de los materiales y se confirmará en el momento del pedido

V_R Refrigerant volume

V_R Volume refrigerante

V_R Kältemittelvolumen

V_R Volumen refrigerante

P Weight

P Peso

P Gewicht

P Peso

d3 Safety valve connection

d3 Attacco valvola di sicurezza

d3 Anschluss des Sicherheitsventils

d3 Empalme válvula de seguridad

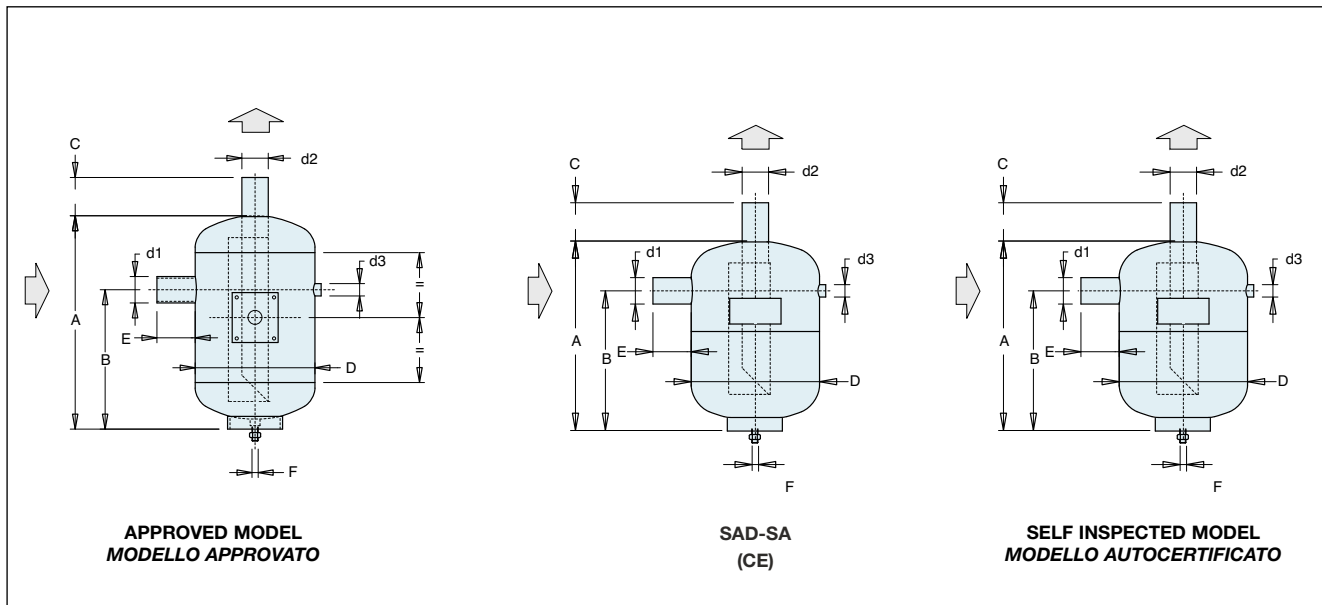
d4 Service socket

d4 Attacco di servizio

d4 Hilfsanschluß

d4 Conexión de servicio

| MODEL MODELLO | | | | SAD-SA 5 | | SAD-SA 10 | | SAD-SA 15 | | SAD-SA 30 | | SAD-SA 60 | |
|---|----|----|--|-------------|-----|--------------|-----|--------------|-----|--------------|-----|--------------|-----|
| Nominal data Dati nominali Nenndaten Datos Nominales [R22 SH = 5 K] | | | | MIN | MAX | MIN | MAX | MIN | MAX | MIN | MAX | MIN | MAX |
| te + 5°C | Qn | kW | | 2.5 | 17 | 4.8 | 30 | 8.5 | 50 | 13,5 | 100 | 26 | 200 |



| SELF INSPECTED MODEL MODELLO AUTOCERTIFICATO | | | SA 5 | SA 10 | SA 15 | SA 30 | SA 60 |
|--|----------------|-----------------|---------|----------|----------|----------|----------|
| Dimensions Dimensioni Abmessungen Dimensiones | A | mm | 290 | 290 | 290 | 380 | 510 |
| | B | mm | 220 | 220 | 220 | 280 | 380 |
| | C | mm | 35 | 35 | 35 | 40 | 40 |
| | D | mm | 160 | 200 | 200 | 230 | 270 |
| | E | mm | 35 | 40 | 40 | 40 | 40 |
| | F | mm | M 10 | M 12 | M 12 | M 12 | M 12 |
| Connections / Attacchi Anschlüsse / Empalmes | d1 = d2 | ODS - mm | 22 | 28 | 35 | 42 | 54 |
| | d3 | NPT | 1/4" | 1/4" | 1/4" | 1/4" | 1/4" |
| | V _R | dm ³ | 4.5 | 7.2 | 7.2 | 12.2 | 24.8 |
| | P | Kg | 3.2 | 4.8 | 5.0 | 7.5 | 13.7 |

| APPROVED MODEL MODELLO APPROVATO | | | SA 5 | SAD 5 | SA 10 | SAD 10 | SA 15 | SAD 15 | SA 30 | SAD 30 | SA60 60 | SAD 60 |
|--|----------------|-----------------|---------|----------|----------|-----------|----------|-----------|----------|-----------|------------|-----------|
| Dimensions Dimensioni Abmessungen Dimensiones | A | mm | 310 | 290 | 345 | 290 | 345 | 290 | 370 | 380 | 520 | 510 |
| | B | mm | 225 | 220 | 225 | 220 | 225 | 220 | 235 | 280 | 395 | 380 |
| | C | mm | 35 | 35 | 55 | 35 | 55 | 35 | 40 | 35 | 70 | 35 |
| | D | mm | 168 | 160 | 194 | 200 | 194 | 200 | 219 | 230 | 273 | 270 |
| | E | mm | 35 | 35 | 55 | 35 | 55 | 35 | 40 | 35 | 70 | 35 |
| | F | mm | M10 | M12 | M12 | M12 | M12 | M12 | M12 | M12 | M12 | M12 |
| Connections / Attacchi Anschlüsse / Empalmes | d1 = d2 | ODS - mm | 22 | 22 | 28 | 28 | 35 | 35 | 42 | 42 | 54 | 54 |
| | d3 | NPT | 1/4" | 3/8" | 1/4" | 3/8" | 1/4" | 3/8" | 1/4" | 3/8" | 1/4" | 3/8" |
| | V _R | dm ³ | 4.5 | 4.6 | 7.2 | 7.2 | 7.2 | 7.2 | 12.2 | 12.2 | 24.8 | 24 |
| | P | kg | 3.2 | 5 | 4.8 | 6 | 5.0 | 6.2 | 13 | 9.8 | 25 | 15 |

V_R Refrigerant volume

V_R Volume refrigerante

V_R Kältemittelvolumen

V_R Volumen refrigerante

P Weight

P Peso

P Gewicht

P Peso

d3 Safety valve connection

d3 Attacco valvola di sicurezza

d3 Anschluss des Sicherheitsventils

d3 Empalme válvula de seguridad

Qn Nominal capacity

Qn Potenza nominale

Qn Nennleistung

Qn Potencia Nominal

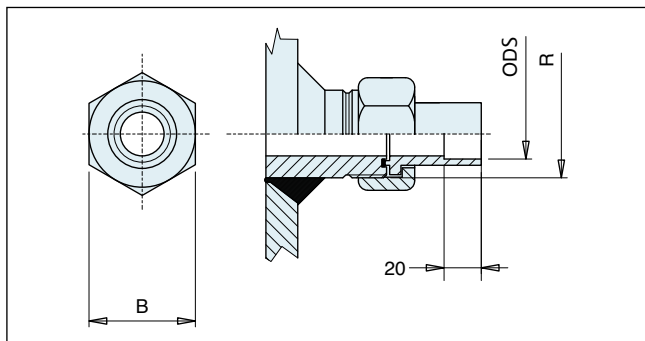
The connection of the receiver to the refrigerant circuit could be done with brazing (ODS) or welding (OD).

Il collegamento di ricevitore al circuito frigorifero può essere realizzato mediante brasatura (ODS) o mediante saldatura (OD).

Die Verbindung des Verdampfers mit dem Kältemittelkreis erfolgt durch Lötung (ODS) oder Schweißung (OD).

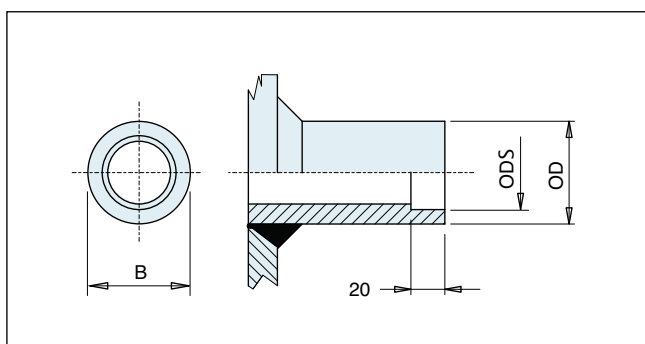
El conexionado del recipiente al circuito de refrigerante puede hacerse mediante termosoldadura (OSD) ó soldadura (OD).

Rotalock Connection / Attacco Rotalock
Rotalockanschluß / Conexión Rotalock



| | | | | |
|----------|------------|----------------|----------------|----------------|
| ODS mm | 16 | 22 | 28 | 35 |
| B mm | 30 | 36 | 50 | 50 |
| Rotalock | 1" - 14UNS | 1 1/4" - 12UNF | 1 3/4" - 12UNF | 1 3/4" - 12UNF |

Welding connection / Attacco saldato
Schweißanschluß / Conexión a soldar



| | | | | | | | | |
|--------|------|------|------|------|----|------|-------|-------|
| ODS mm | 22 | 35 | 42 | 54 | - | - | - | - |
| OD mm | - | - | - | - | 76 | 88.9 | 101.6 | 114.3 |
| B mm | 26.7 | 42.4 | 48.3 | 60.3 | 76 | 88.9 | 101.6 | 114.3 |

Sightglass / Spia liquido
Schauglas / luce indicadora de líquido

CE approved sight glasses are available with glass diameter 30 mm (up to receivers with diameter 194 mm) or 35 mm (starting with 219 mm).

Sono disponibili spie di liquido approvate CE con diametro spia 30 mm (fino a ricevitori con diametro 194 mm) o 35 mm (dal diametro 219 mm).

Es können CE genehmigte Schaugläser mit 30 mm Durchmesser (für Sammler mit einem Durchmesser von bis zu 194 mm) oder mit 35 mm Durchmesser (für Sammler ab einem Durchmesser von 219 mm) mit geliefert werden.

Están disponibles luces indicadoras de liquido aprobadas CE con diámetro luz indicadora 30 mm (hasta receptores con diámetro 194 mm) ó 35 mm (con diámetro 219 mm).

