



Cetetherm Maxi Module

Compact district heating substation

The Cetetherm Maxi Modules are prefabricated district heating substations with a completely prefabricated primary side. The system can be extended on-site by means of a secondary side according to usage requirements. Electric components have been dispensed with to ensure maximum flexibility.

Applications

Cetetherm Maxi Modules are designed as district heating substations. There are two different versions, each with 8 power stages.

Versions:

GB modules with brazed exchangers

GM modules with brazed exchangers

Operation and assembly

Cetetherm Maxi Modules operate as indirect systems. They comprise the brazed heat exchanger with insulation, two main shut-offs, a strainer, thermometers, manometers, the control valve, the differential pressure regulator, an adapter for the heat meter, as well as sensor connections, primary-side and secondary-side outflows.

Advantages

- efficient series production means quick delivery
- use of branded components made in Germany and Scandinavia
- easy to install and quick to dismantle for transport purposes
- proven engineering
- simple assembly
- optimum starting point for building pipework

Design data

		TS	PS	PN
GB version	Primary side	130°C	13 bar	16 bar
GM version	Primary side	150°C	20 bar	25 bar

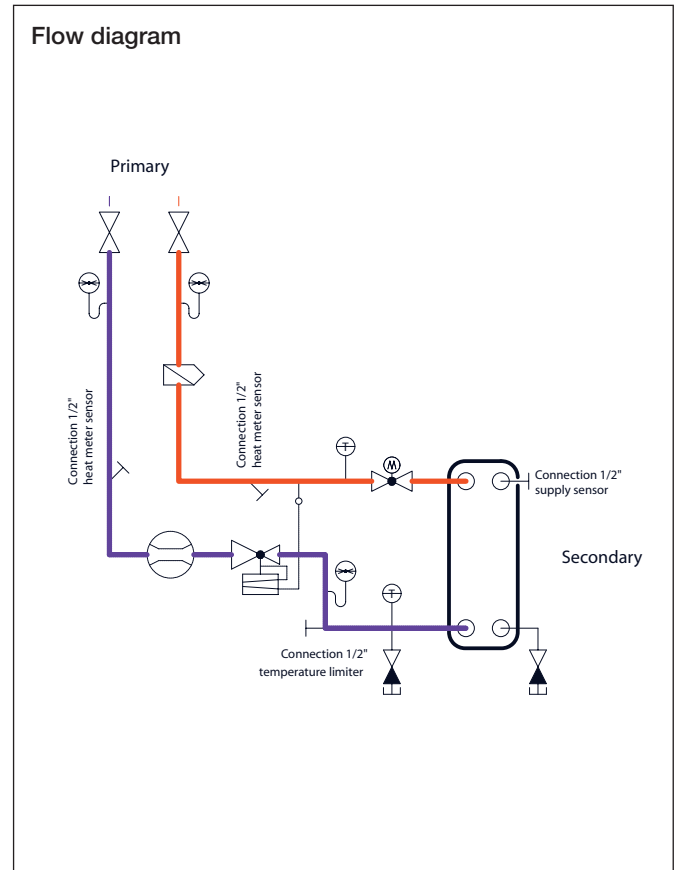
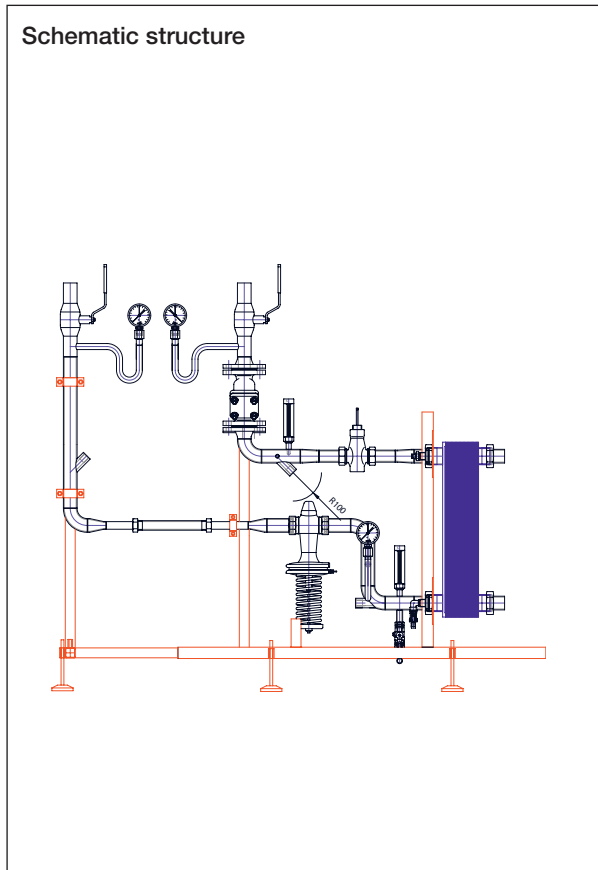


Tests and certifications

Our quality assurance system at Alfa Laval is in accordance with ISO9001. The systems are CE approved and manufactured in accordance with the Pressure Equipment Directive. The technical design is in accordance with DIN4747 and AGFW guidelines. The GM product version also complies with TAB München. Welding work carried out by approved welders, weld seam quality B in accordance with EN 25817.

Cetetherm Maxi Module GB

Compact district heating substation

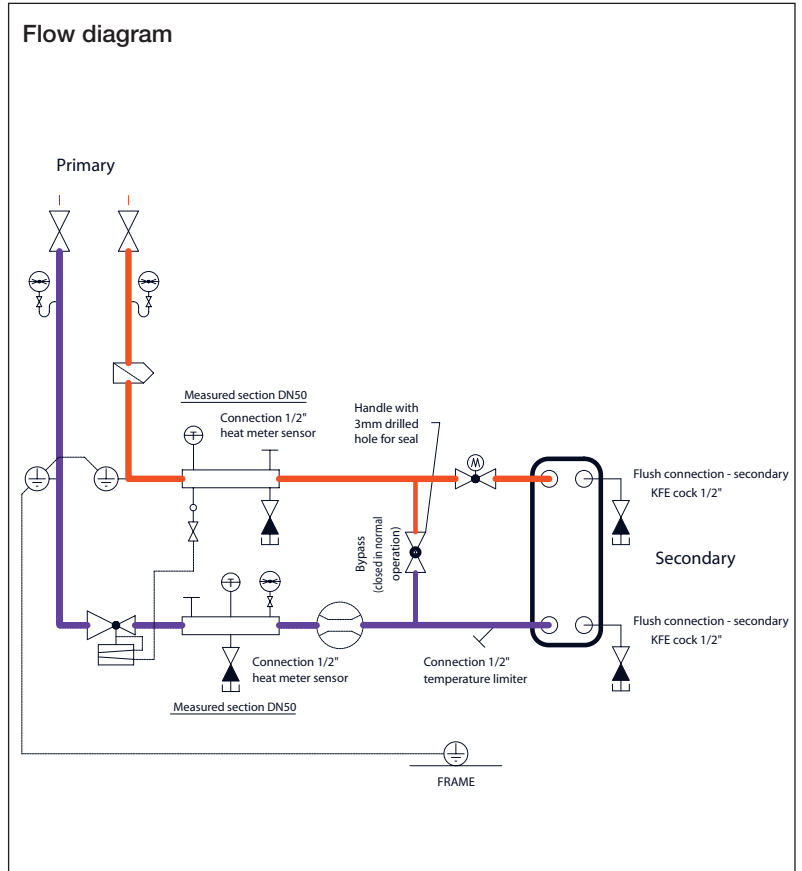
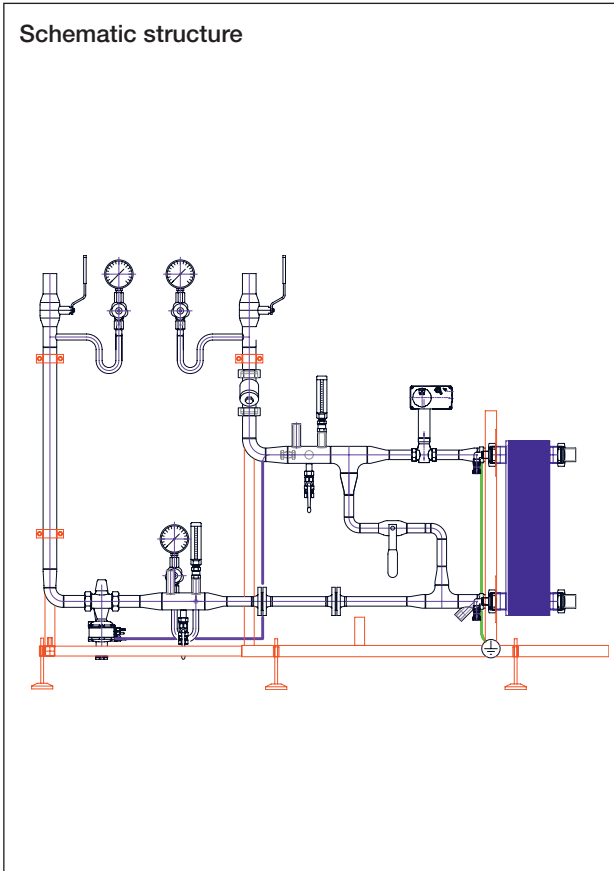


Article no.	Model	primary		secondary		primary		secondary		primary		secondary		Control valve	Differential pressure regulator			Connection- for heat meter ¹⁾	Adapter for heat meter ¹⁾	approximate dimensions L x W x H in mm	approximate weight kg
		Inf ow	Outf ow	Output kW	Output kW	Output kW	Output kW	Valve type	Size	kvs	Regulator type	Size	kvs		Size	Size					
270001	GB-52L-20	110	70	50	71	71	72	3222	15	4	46-6	15	4	20	Qn 1.5 R1/2" L=110mm	1600 x 460 x 1390	65				
270003	GB-52L-30	120	90	75	107	107	106	3222	20	6,3	46-6	20	6,3	25	Qn 2.5 R3/4" L=130mm	1600 x 460 x 1390	70				
270005	GB-52L-40	130	90	100	125	125	137	3222	25	8	46-6	25	8	32	Qn 2.5 R3/4" L=130mm	1600 x 460 x 1390	80				
270007	GB-52L-50	120	70	150	168	168	166	3222	32	16	46-6	25	8	40	Qn 6.0 R1" L=260mm	1700 x 460 x 1390	85				
270009	GB-76H-40	130	70	200	219	219	213	3222	32	16	46-6	40	16	40	Qn 6.0 R1" L=260mm	1745 x 460 x 1440	100				
270011	GB-76H-50	120	50	250	265	265	262	3222	40	20	46-6	40	16	50	Qn 10.0 R1 1/2" L=300mm	1800 x 460 x 1440	115				
270013	GB-76H-60	130	70	300	326	326	323	3222	50	25	46-6	50	20	50	Qn 10.0 R1 1/2" L=300mm	1800 x 460 x 1440	125				
270015	GB-76H-80	120	50	400	430	430	425	3214	50	32	42-34	50	32	65	Qn 10.0 R1 1/2" L=300mm	1800 x 460 x 1440	190				

¹⁾ Layout of connections for sensor G1/2"x100mm

Cetetherm Maxi Module GM

Compact district heating substation



Article no.	Model	Output kW		Control valve			Differential pressure regulator			Connection Size DN	Adapter for heat meter ¹⁾	approximate dimensions L x W x H in mm	approximate weight kg
		primary	secondary	Valve type	Size DN	kvs	Regulator type	Size DN	kvs				
270016	GM-52L-20	50	57	3222	15	2.5	46,7	15	2.5	20	Qn 1.5 DN20 (Flange) L=190mm	1750 x 450 x 1390	70
270018	GM-52L-30	75	86	3222	15	2.5	46-7	15	4	20	Qn 1.5 DN20 (Flange) L=190mm	1750 x 450 x 1390	75
270020	GM-52L-40	100	116	3222	15	4	46-7	20	6.3	25	Qn 1.5 DN20 (Flange) L=190mm	1750 x 450 x 1390	85
270022	GM-52L-50	150	173	3222	20	6.3	46-7	20	6.3	32	Qn 2.5 DN20 (Flange) L=190mm	1900 x 450 x 1390	90
270024	GM-76H-40	175	203	3222	20	6.3	46-7	25	8	32	Qn 2.5 DN20 (Flange) L=190mm	1950 x 450 x 1440	105
270026	GM-76H-50	200	232	3222	25	8	46-7	25	8	32	Qn 3.0 DN20 (Flange) L=190mm	2000 x 450 x 1440	120
270028	GM-76H-60	250	289	3222	25	8	46-7	32	12.5	40	Qn 3.5 DN25 (Flange) L=260mm	2000 x 450 x 1480	130
270030	GM-76H-80	350	405	3222	32	16	46-7	32	12.5	50	Qn 6.0 DN25 (Flange) L=260mm	2100 x 450 x 1540	140

¹⁾ Layout of connections for sensor G1/2"x120mm (SWM worksheet: F-P12-11159)